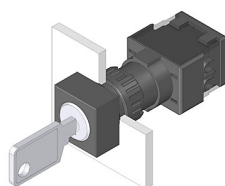


# EAO – Your Expert Partner for Human Machine Interfaces

## 61-2205.0/D - Keylock switch actuator 2 positions square

### 61-2205.0/D - Keylock switch actuator 2 positions square



*Attention: The preview is based on a sample product. This can differ from your current configuration.*

#### Mounting

Mounting cut-out Ø 16 mm

#### Other Attributes

Weight 0.065 kg

#### Operating-/Indication part

Switching angle C = 90°

#### IP-Rating

Front protection IP 65

#### Actuator

Key remove A + C  
Switching action Rest - Maintained

#### Switching element

Rotary positions 2

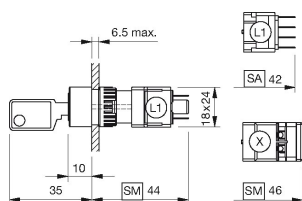
#### Function

Keylock switch

# EAO – Your Expert Partner for Human Machine Interfaces

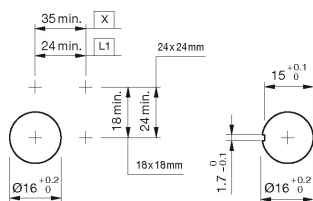
## 61-2205.0/D - Keylock switch actuator 2 positions square

### Dimensions



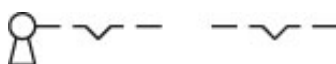
L1 = Solder terminal 2.8 x 0.5 mm

### Mounting cut-outs



L1 = Solder terminal 2.8 x 0.5 mm

### Wiring diagram



### Additional information

Standard lock: DOM 311

Two keys are supplied with each key lock switch

Optional lock numbers on request

If mounted with anti-twist device, the lug is on the left side

Anti-twist ring not needed by using anti-twist device

### Legend

Switching action: A = Rest, C = Maintained

# Mouser Electronics

Authorized Distributor

Click to View Pricing, Inventory, Delivery & Lifecycle Information:

EAO:

[61-2205.0/D](#)