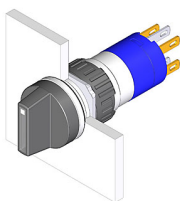


# EAO – Your Expert Partner for Human Machine Interfaces

## 52-271.022 - Selector switch 2 positions

### 52-271.022 - Selector switch 2 positions



*Attention: The preview is based on a sample product. This can differ from your current configuration.*

#### Mounting

Mounting cut-out	Ø 16 mm
Design	raised

#### Front

Front dimension	Ø 18 mm
Front shape	round

#### Other Attributes

Weight	0.006 kg
Diode 1N4007	no value

#### Operating-/Indication part

Switching angle	C = 90°
-----------------	---------

#### IP-Rating

Front protection	IP 65
------------------	-------

#### Connection Method

Terminal	Solder 2.8 x 0.5 mm
----------	---------------------

#### Actuator

Switching action	Rest - Maintained
------------------	-------------------

#### Switching element

Rotary positions	2
Switching system	Snap-action switching element
Contacts	1 NC + 1 NO
Switching current	5 A
Contact material	Gold
Switching voltage	250 V AC

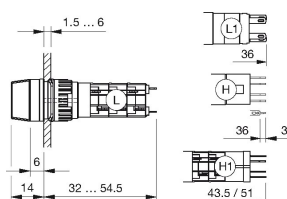
#### Function

Selector switch
-----------------

# EAO – Your Expert Partner for Human Machine Interfaces

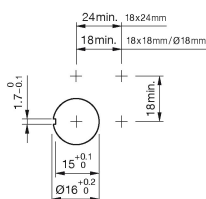
52-271.022 - Selector switch 2 positions

## Dimensions

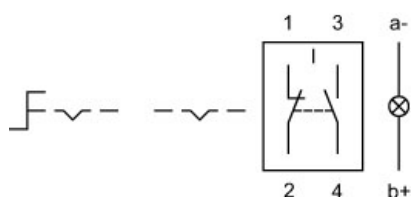


H = Universal terminal 2.0 x 0.5 mm

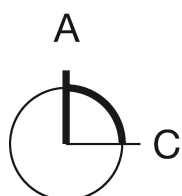
## Mounting cut-outs



## Wiring diagram



## Switching positions



## Additional information

illuminative

## Legend

Contacts: NC = Normally closed, NO = Normally open  
Switching action: A = Rest, C = Maintained

# Mouser Electronics

Authorized Distributor

Click to View Pricing, Inventory, Delivery & Lifecycle Information:

EAO:

[52-271.022](#)