

Switching element

92-851.342



<https://eao.com/p/92-851.342>

Your product:



92-851.342

Switching element

ELECTRICAL CHARACTERISTICS

Contacts:	1 NO		
Switching voltage and switching current:	Switching voltage	min. 50 m VAC/DC	max. 42 VAC/DC
	Switching current	min. 10 μA AC/DC	max. 100 mA AC/DC
	Power rating	max. 2 W	
Switching rating:	42 V @ 0,1 A		
Electrical lifetime:	≥500 000 cycles of operation at 42VDC, 50mA, according to IEC 60512-5-9c, When attention is paid to the direction of current flow from terminal 3/4 to 1/2 the electrical life can be prolonged.		
Electric strength:	500 VAC, 50 Hz, 1 minute according to DIN IEC 60512-2-4a		

MECHANICAL CHARACTERISTIC

Terminal:	PCB terminal
Contact material:	Gold
Switching action:	Momentary
Switching system:	Short-travel element
Switching system:	Short-travel snap-action switching system with two independent contact points and tactile operation Guarantees reliable switching even of very light loads. 1 normally open contact
Mechanical lifetime:	≥ 1 Mio. cycles of operation (switching element under overlay), ≥ 5 Mio. cycles of operation (switching element without overlay)
Operating force:	2.7 N \pm 1 N (measured on switching element)
Operating Travel:	ca. 0.5 mm
Weight:	0.001 kg

AMBIENT CONDITION

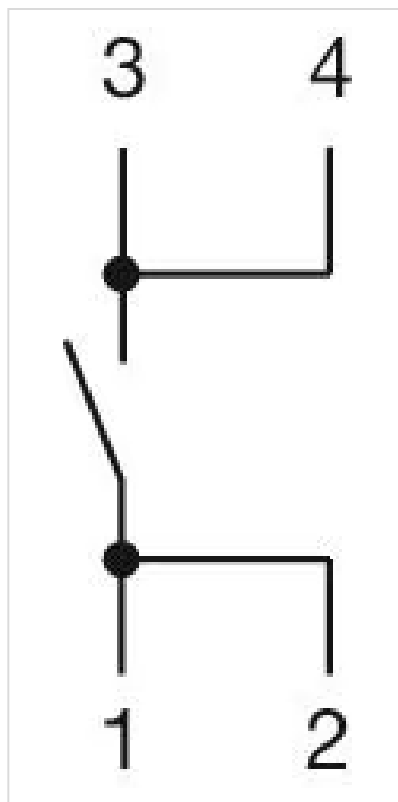
IP Protection:	IP40 switching element (fluxproof to DIN 41640 Part 84), IP65 (front side with overlay foil)
Operating temperature:	– 25 °C ... + 70 °C
Storage temperature:	– 40 °C ... + 85 °C

CERTIFICATE

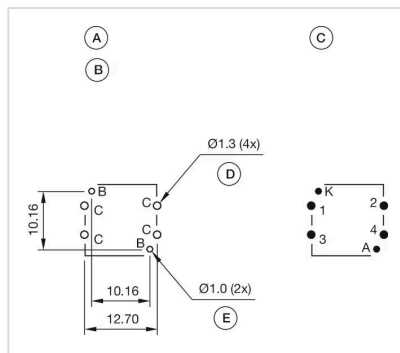
Conformities:	CE, UKCA, 2011 / 65 / EC (RoHS)
REACH:	REACH compliant
RoHS:	RoHS compliant

OTHER

Short Description:	Switching element, Short-travel element, 42 V @ 0,1 A, Gold, 1 NO, PCB terminal
Material:	Plastic
Hints:	The customer has to decide what series resistor shall be used to the LED,LED and mounting flange to be ordered separately
Wiring diagrams:	

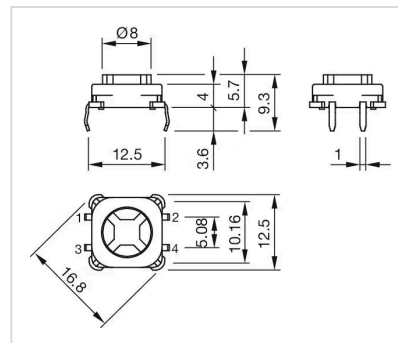


Component layouts:













A = Switching element with illumination
 B = Single LED
 C = Drilling plan (component side)
 D = Hole for switching element, pad max. Ø 2.5 mm
 E = Hole for LED

Dimension drawings:



Where to Buy

	Distributor	Quantity in Stock	
	Sager	6203 in stock	Buy 
	element14 Singapore	1515 in stock	Buy 
	DigiKey	1250 in stock	Buy 
	RS UK	515 in stock	Buy 
	Mouser Electronics	453 in stock	Buy 

[Show more](#) 

Powered by oemsecrets.com

Mouser Electronics

Authorized Distributor

Click to View Pricing, Inventory, Delivery & Lifecycle Information:

[EAO:](#)

[92-851.342](#)