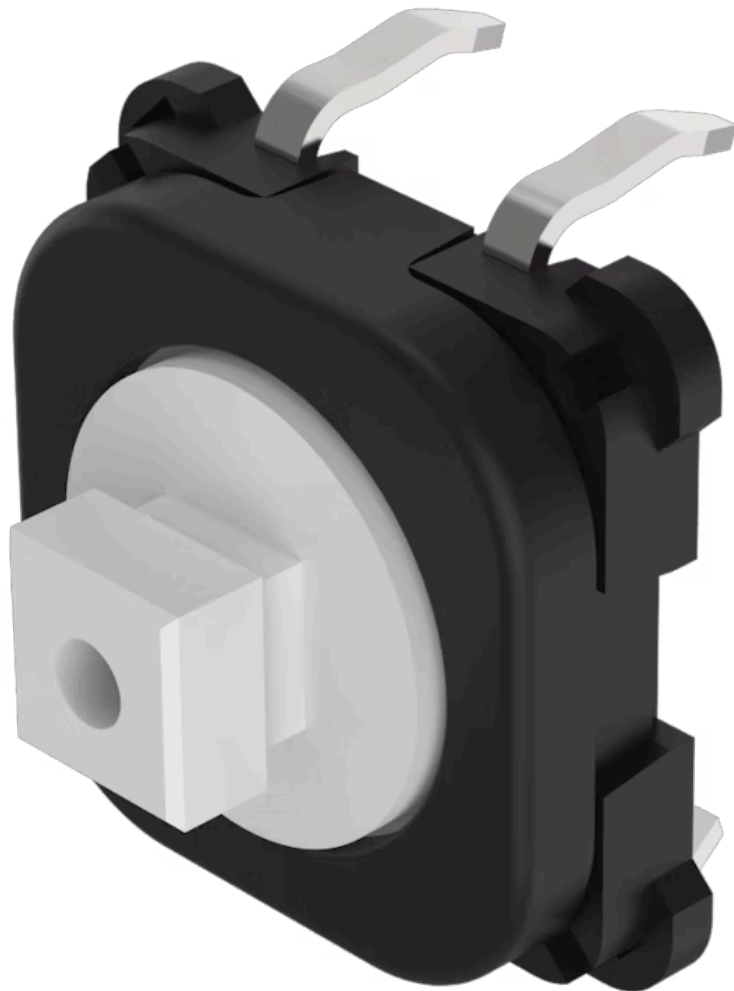


Switching element

70-201.0



<https://eao.com/p/70-201.0>

Your product:



70-201.0

Switching element

ELECTRICAL CHARACTERISTICS

Contacts:	1 NO		
Switching voltage and switching current:	Switching voltage	min. 50 m VAC/DC	max. 42 VAC/DC
	Switching current	min. 10 μA AC/DC	max. 100 mA AC/DC
	Power rating	max. 2 W	
Switching rating:	42 V @ 0,1 A		
Electrical lifetime:	≥500 000 cycles of operation at 42VDC, 50mA, according to IEC 60512-5-9c, When attention is paid to the direction of current flow from terminal 3/4 to 1/2 the electrical life can be prolonged.		
Electric strength:	500 VAC, 50 Hz, 1 minute according to DIN IEC 60512-2-4a		

MECHANICAL CHARACTERISTIC

Terminal:	PCB terminal
Contact material:	Gold
Switching action:	Momentary
Switching system:	Short-travel element
Switching system:	Short-travel snap-action switching system with two independent contact points and tactile operation Guarantees reliable switching even of very light loads. 1 normally open contact
Mechanical lifetime:	≥ 1 Mio. cycles of operation (switching element under overlay), ≥ 5 Mio. cycles of operation (switching element without overlay)
Operating force:	2,1 N \pm 0,2 N with decor foil, >50 N max. on button centre with test plunger, according to DIN 42115
Operating Travel:	ca. 0.5 mm
Weight:	0.001 kg

AMBIENT CONDITION

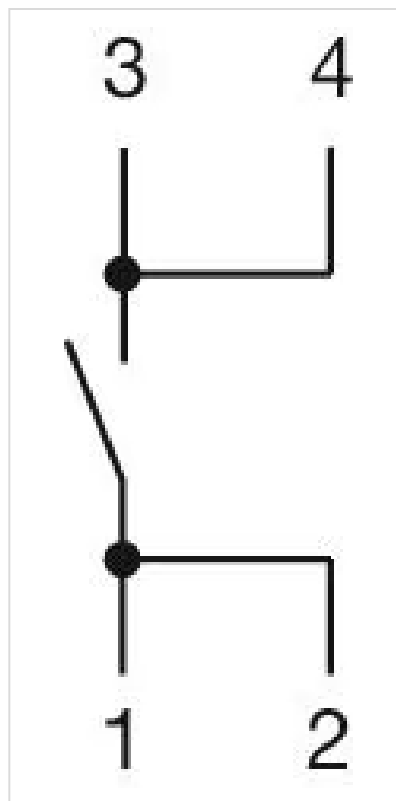
IP Protection:	IP40 (only switching element), IP65 (front side with overlay foil)
Operating temperature:	– 25 °C ... + 70 °C
Storage temperature:	– 40 °C ... + 85 °C

CERTIFICATE

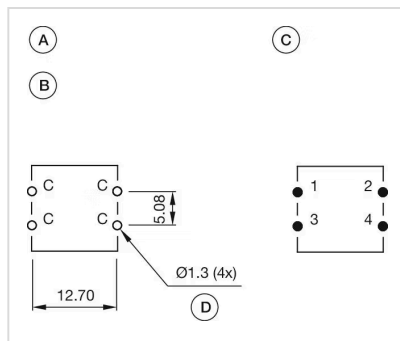
Conformities:	CE, UKCA, 2011 / 65 / EC (RoHS)
REACH:	REACH compliant
RoHS:	RoHS compliant

OTHER

Short Description:	Switching element, Short-travel element, 42 V @ 0,1 A, Gold, 1 NO, PCB terminal
Wiring diagrams:	

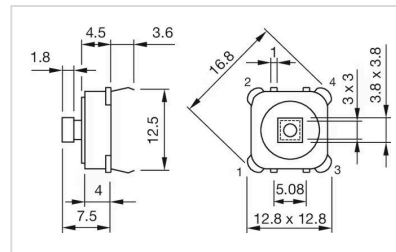


Component layouts:













A = Switching element without illumination
 B = Drilling plan (component side)
 C = Occupancy plan (component side)
 D = Hole for switching element

Dimension drawings:



Where to Buy

	Distributor	Quantity in Stock	
	Mouser Electronics	99 in stock	Buy 
	Digi-Key	2 in stock	Buy 
	Newark Electronics	0 in stock	Buy 
	Sager	0 in stock	Buy 
	RS UK	0 in stock	Buy 

Show more 

Powered by oemsecrets.com

Mouser Electronics

Authorized Distributor

Click to View Pricing, Inventory, Delivery & Lifecycle Information:

[EAO:](#)

[70-201.0](#)