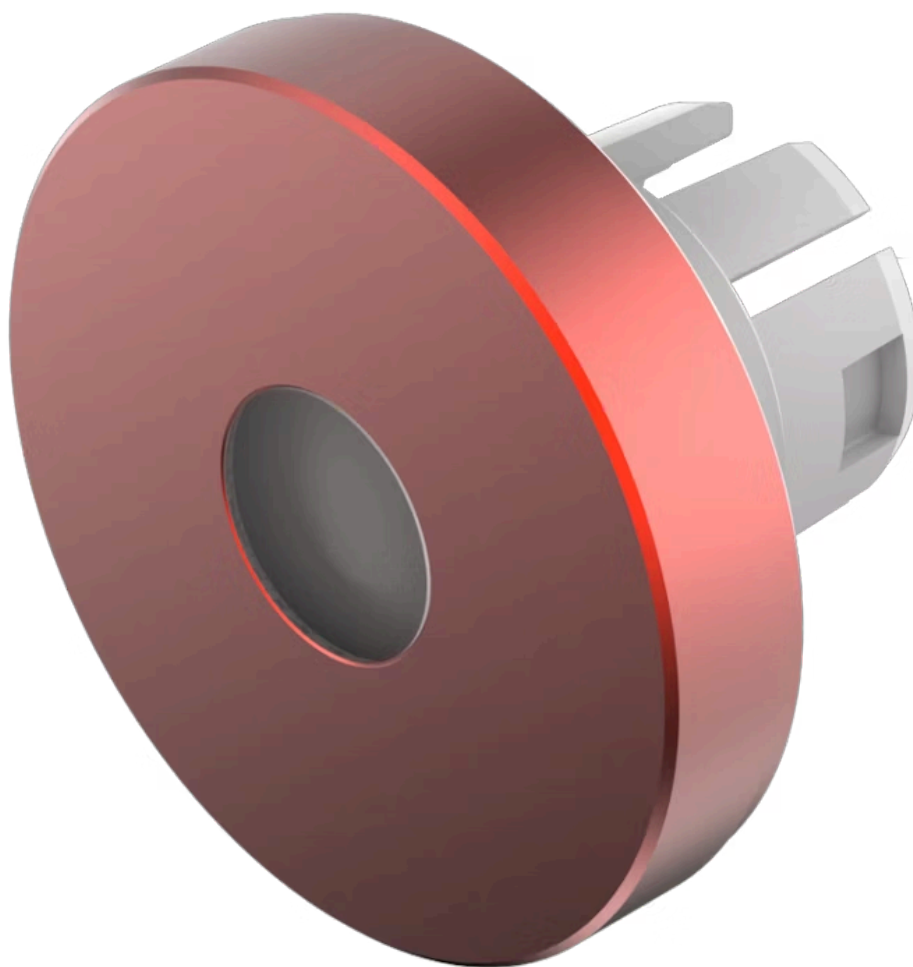


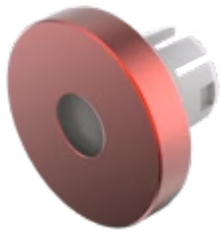
Lens

61-
9841.2A



<https://eao.com/p/61-9841.2A>

Your product:



61-9841.2A Lens

FRONT

Front form: round

OPERATING-/INDICATION PART

Lens colour: Red

Lens material: Aluminium

Lens illumination: illuminative

Lens shape: flush

Lens optics: opaque

Shape of illumination: Dot

MECHANICAL CHARACTERISTIC

Weight: 0.002 kg

CERTIFICATE

REACH: REACH compliant

RoHS: RoHS compliant











OTHER

Short Description: Lens, Ø 19.7 mm, illuminative, Red, flush, Aluminium

Dimension: Ø 19.7 mm

Hints: The colour of anodised aluminium parts can vary due to technical production reasons

Where to Buy

Distributor		Quantity in Stock		
	Digi-Key	10 in stock	Buy	
	RS Americas	1 in stock	Buy	
	Mouser Electronics	0 in stock	Buy	
	Newark Electronics	0 in stock	Buy	
	Sager	0 in stock	Buy	

Powered by oemsecrets.com

Mouser Electronics

Authorized Distributor

Click to View Pricing, Inventory, Delivery & Lifecycle Information:

[EAO:](#)

[61-9841.2A](#)