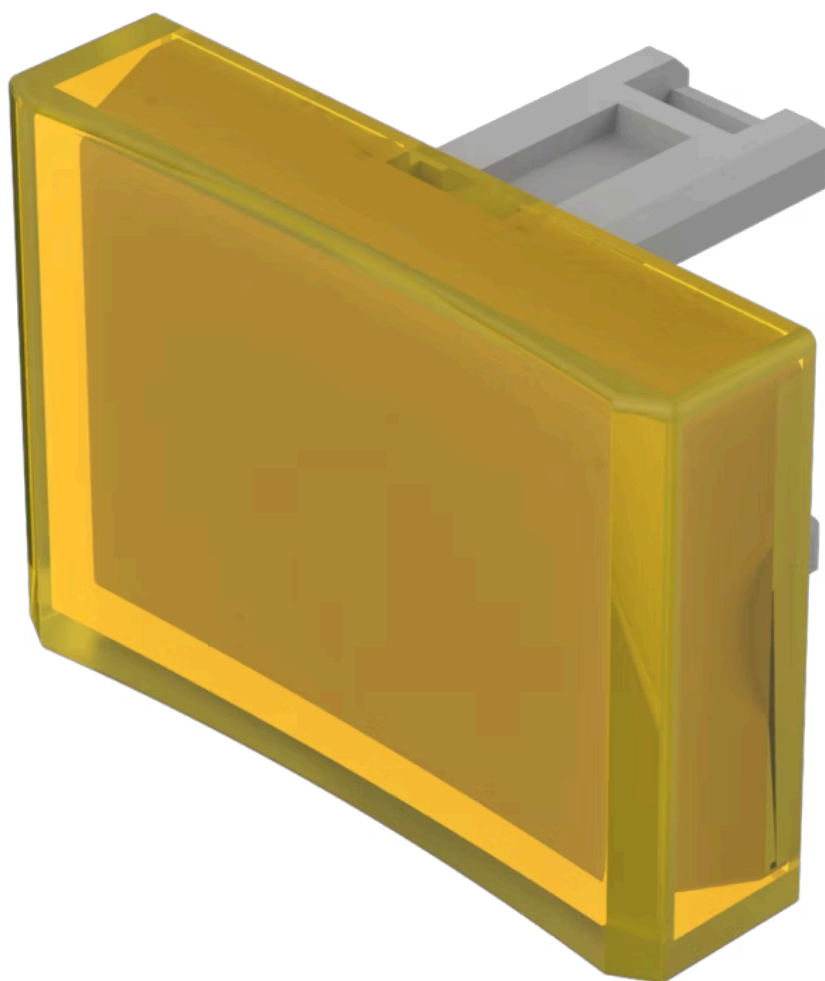


Lens

31-
904.4



<https://eao.com/p/31-904.4>

Your product:



31-904.4 Lens

FRONT

Front form: rectangular

OPERATING-/INDICATION PART

Lens colour: Yellow

Lens material: Plastic

Lens illumination: illuminative

Lens shape: concave

Lens optics: transparent

MECHANICAL CHARACTERISTIC

Weight: 0.001 kg

CERTIFICATE

REACH: REACH compliant

RoHS: RoHS compliant

OTHER

Short Description: Lens, 21.5 mm x 15.3 mm, illuminative, Yellow, concave, Plastic

Dimension: 21.5 mm x 15.3 mm

Mouser Electronics

Authorized Distributor

Click to View Pricing, Inventory, Delivery & Lifecycle Information:

[EAO:](#)

[31-904.4](#)