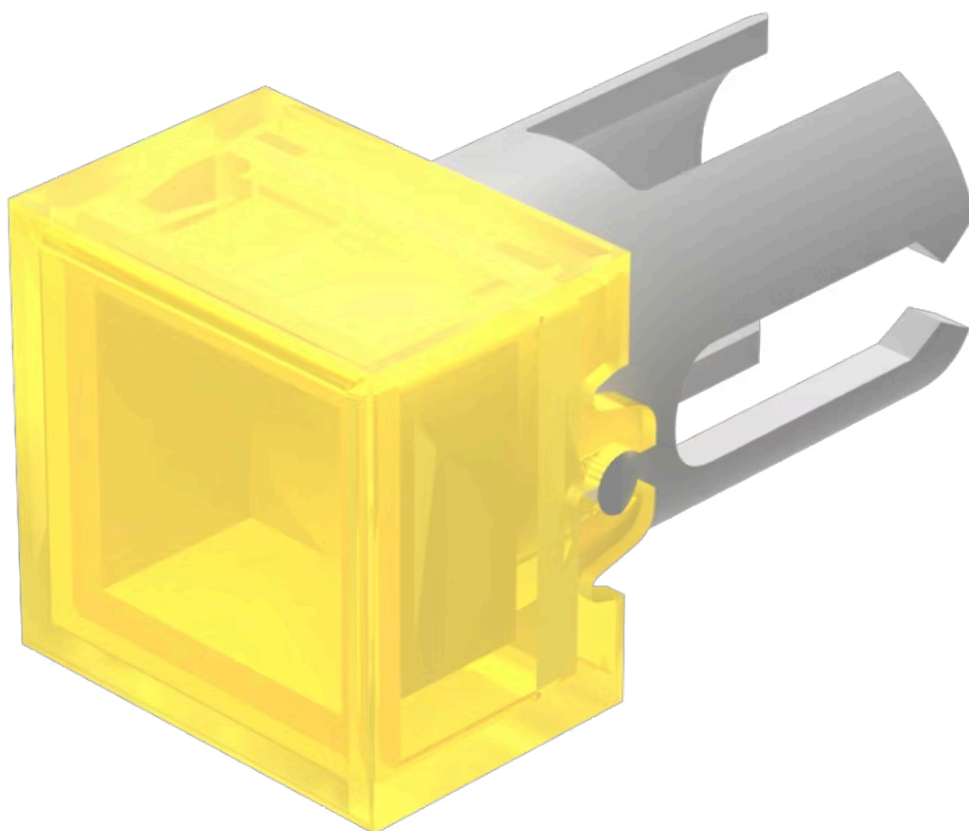


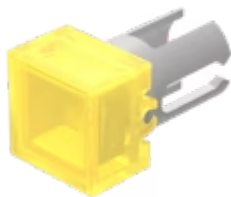
Lens

19-
952.4



<https://eao.com/p/19-952.4>

Your product:



19-952.4 Lens

FRONT

Front form: square

OPERATING-/INDICATION PART

Lens colour: Yellow

Lens material: Plastic

Lens illumination: illuminative

Lens shape: flush

Lens optics: transparent

MECHANICAL CHARACTERISTIC

Weight: 0.001 kg

CERTIFICATE

REACH: REACH compliant

RoHS: RoHS compliant

OTHER

Short Description: Lens, 7.3 mm x 7.3 mm, illuminative, Yellow, flush, Plastic

Dimension: 7.3 mm x 7.3 mm

Mouser Electronics

Authorized Distributor

Click to View Pricing, Inventory, Delivery & Lifecycle Information:

[EAO:](#)

[19-952.4](#)