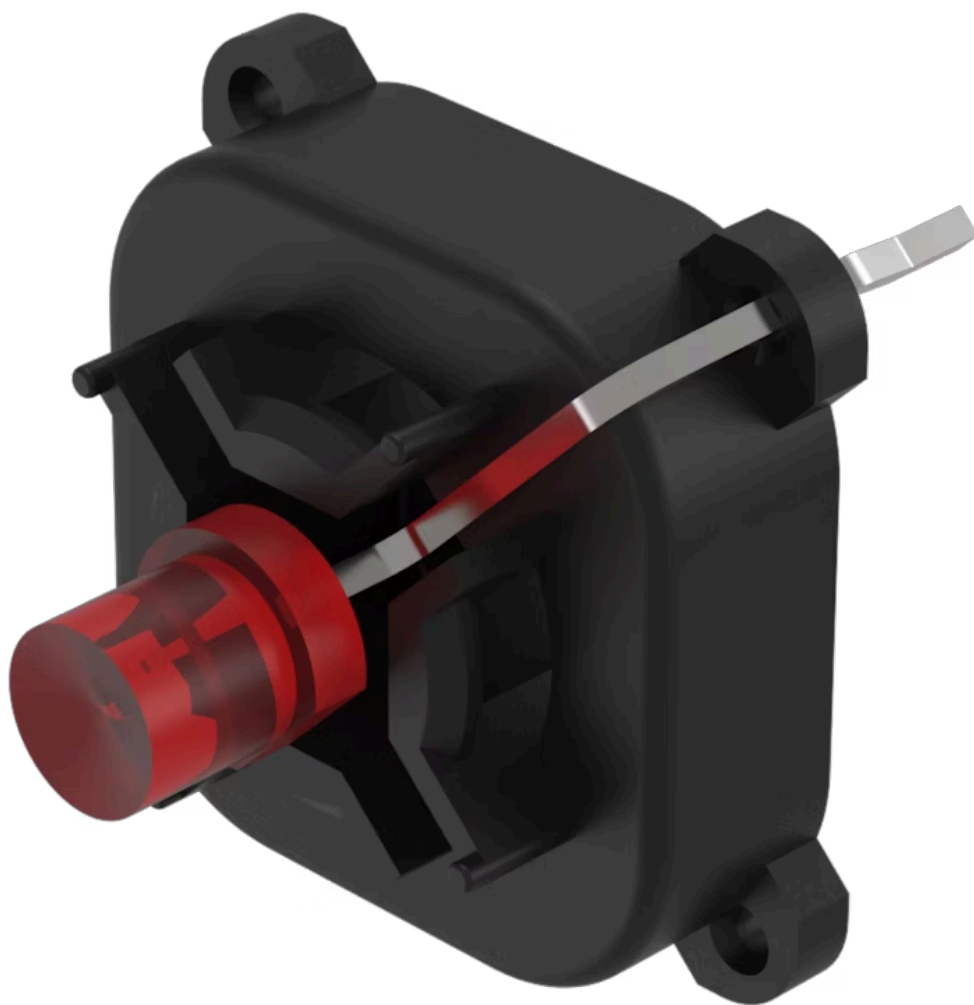


Indicator element

70-820.2S



<https://eao.com/p/70-820.2S>

Your product:



70-820.2S

Indicator element

OPERATING-/INDICATION PART

Illumination colour: Red

ELECTRICAL CHARACTERISTICS

Operating voltage: 2 DC

Lumi. Intensity: 160 mcd

MECHANICAL CHARATERISTIC

Terminal: PCB terminal

Weight: 0.001 kg

CERTIFICATE

REACH: REACH compliant

RoHS: RoHS compliant

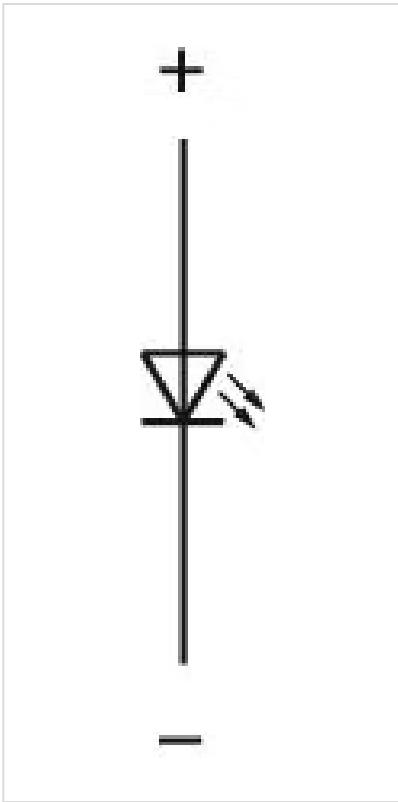
OTHER

Short Description: Indicator element, Red, Single-LED, 2 DC, PCB terminal

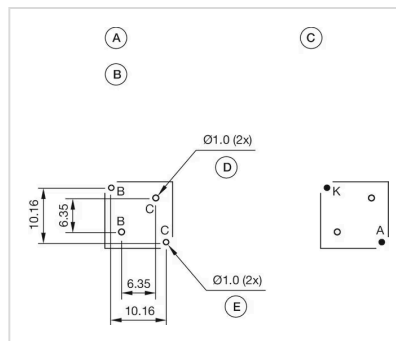
Kind of illumination: Single-LED

Hints: The customer has to decide what series resistor shall be used to the LED

Wiring diagrams:

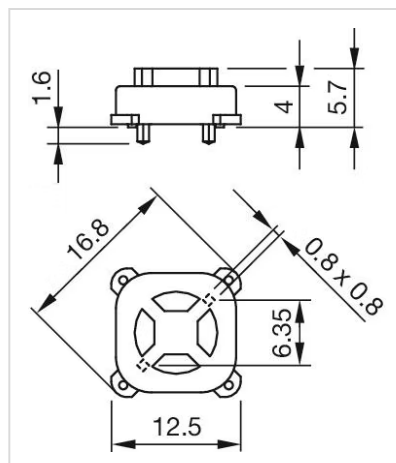


Component layouts:













A = Illumination element
 B = Single LED
 C = Drilling plan (component side)
 D = Hole for centering pins non-metallic
 E = Hole for LED

Dimension drawings:



Where to Buy

Distributor		Quantity in Stock		
	DigiKey	10 in stock	Buy	
	Mouser Electronics	0 in stock	Buy	
	Sager	0 in stock	Buy	
	RS Americas	0 in stock	Buy	
	Newark	0 in stock	Buy	

Powered by oemsecrets.com

Mouser Electronics

Authorized Distributor

Click to View Pricing, Inventory, Delivery & Lifecycle Information:

[EAO:](#)

[70-820.2S](#)