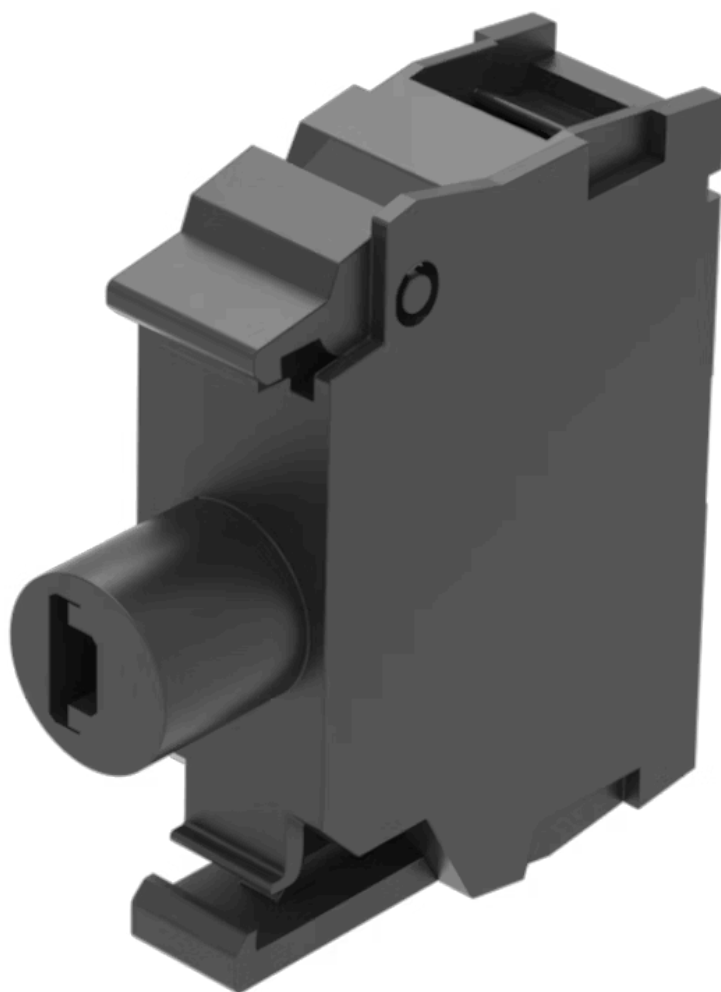


# Illumination element

45-320.1E11



<https://eao.com/p/45-320.1E11>

Your product:

---



## 45-320.1E11

### Illumination element

#### MOUNTING

**Component mounting type:** Front mounting

#### OPERATING-/INDICATION PART

**Illumination colour:** Red

#### ELECTRICAL CHARACTERISTICS

**Operating voltage:** 6 - 24 V AC/DC

**Operation current:** 6 mA

**Surge voltage resistance:** 4 kV

**Lumi. Intensity:** 450 - 1120 mcd

#### MECHANICAL CHARACTERISTIC

**Terminal:** Screw terminal

**Weight:** 0.008 kg

#### CERTIFICATE

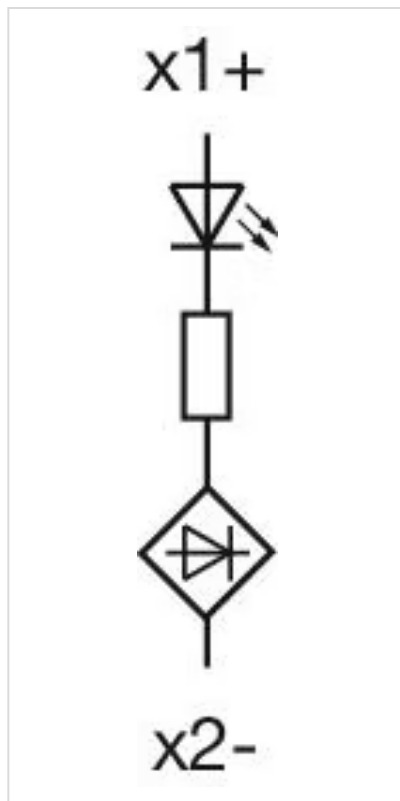
**REACH:** REACH compliant

**RoHS:** RoHS compliant

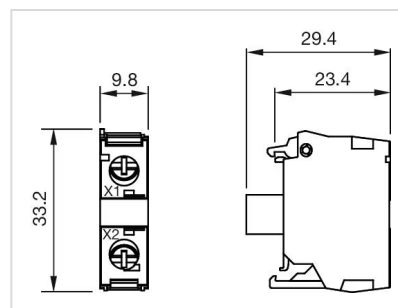
#### OTHER

**Short Description:** Illumination element, Screw terminal, Red, 6 - 24 V AC/DC, Front mounting

**Wiring diagrams:**



Dimension drawings:



# Mouser Electronics

Authorized Distributor

Click to View Pricing, Inventory, Delivery & Lifecycle Information:

[EAO:](#)

[45-320.1E11](#)