

Bi-colour LED

10-2H12.314A



<https://eao.com/p/10-2H12.314A>

Your product:



10-2H12.314A Bi-colour LED

OPERATING-/INDICATION PART

Illumination colour: Red / Green

ELECTRICAL CHARACTERISTICS

Operating voltage: 24 V DC +10%

Operation current: 15 mA \pm 15 %

Lumi. Intensity: 1200/900 mcd

MECHANICAL CHARATERISTIC

Weight: 0.002 kg

CERTIFICATE

REACH: REACH compliant

RoHS: RoHS compliant

OTHER

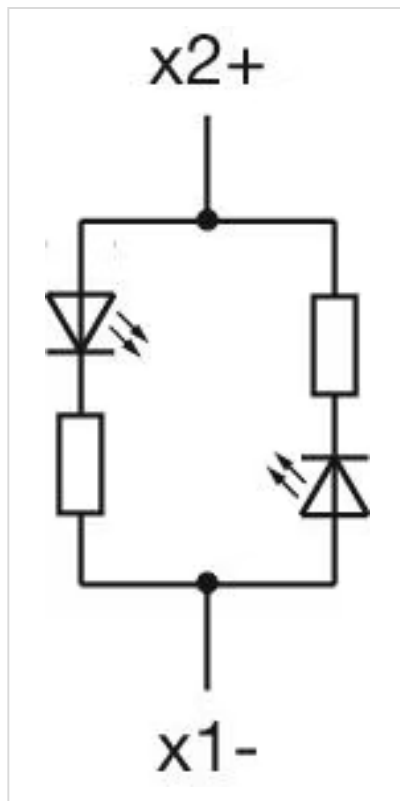
Short Description: Bi-colour LED, BA9s, Red / Green, 24 V DC +10%

Kind of illumination: Bi-colour-LED

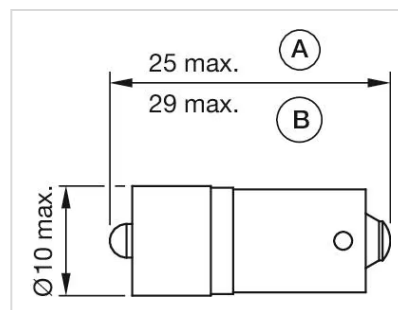
Product attributes: X2: + = Red / X1: + = Green

Hints: The max. overall length of the lamp may not exceed 25mm,Electrical and optical data are measured at 25 °C,The specified 6 V DC, 24 V DC Bi-colour; 130 V AC, 130 V DC and 230 V AC versions are built with a protection diode,Luminosity and wave length variations caused by LED manufacturing processes may cause slight differences regarding the illumination. The customer has to decide what resistor shall be used to the LED

Wiring diagrams:









Dimension drawings:



A = (standard)
B = (super bright)

Where to Buy

Distributor		Quantity in Stock		
	DigiKey	9 in stock	Buy	
	RS Americas	9 in stock	Buy	
	Mouser Electronics	4 in stock	Buy	
	Sager	0 in stock	Buy	

Powered by oemsecrets.com

Mouser Electronics

Authorized Distributor

Click to View Pricing, Inventory, Delivery & Lifecycle Information:

[EAO:](#)

[10-2H12.314A](#)