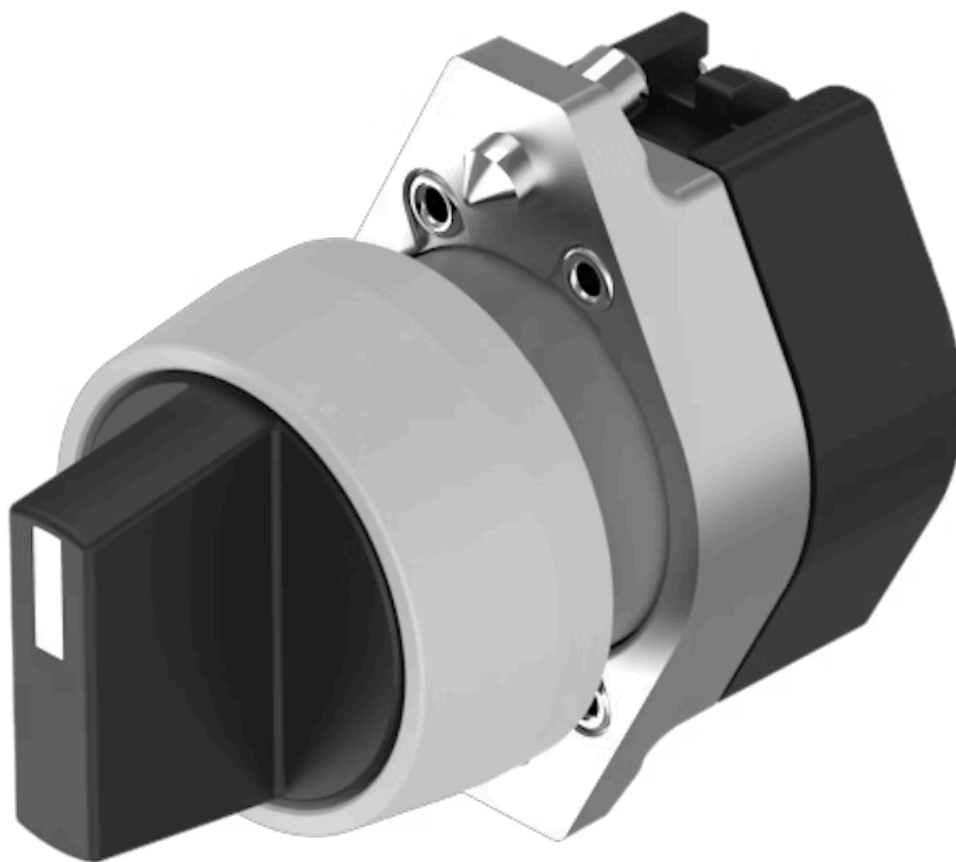


# Actuator

704.410.0.12



<https://eao.com/p/704.410.0.12>

Your product:

---



## 704.410.0.12 Actuator

### FRONT

Front dimension:	Ø 29 mm
Front form:	round
Front bezel colour:	Grey
Front bezel material:	Plastic

### MOUNTING

Design:	raised
Mounting type:	Panel mounting

### OPERATING-/INDICATION PART

Lever colour:	Black
Lever material:	plastic
Lever shape:	short

### ELECTRICAL CHARACTERISTICS

Standards:	The switches comply with the "Standards for low-voltage switching devices" DIN EN 60947-1
------------	---

### MECHANICAL CHARACTERISTIC

Switching action:	Rest - Maintained
Switching positions:	2 positions
Switching angle:	90° right
Mechanical lifetime:	≤2.5 Mio. cycles of operation

**Weight:** 0.034 kg

## AMBIENT CONDITION

**IP Protection:** IP65 front side

**Operating temperature:** – 40 °C ... + 55 °C

**Storage temperature:** – 40 °C ... + 85 °C

## CERTIFICATE

**REACH:** REACH compliant

**RoHS:** RoHS compliant

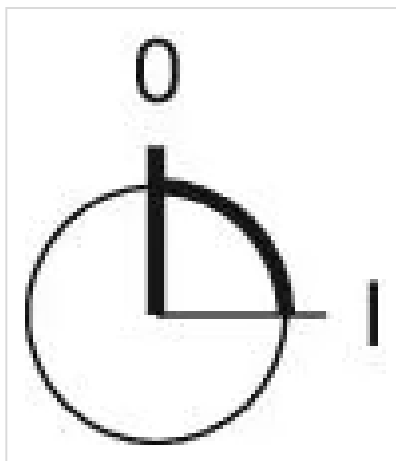
## OTHER

**Short Description:** Actuator, Ø 29 mm, non illuminative, Black, short, round, Grey, Plastic, Rest - Maintained

**Hints:** Max. 3 switching elements can be clipped on

**max. number of switching elements:** 3

**Switching positions:**



**Wiring diagrams:**

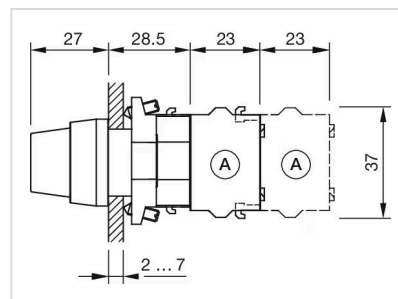


**Mounting cut-outs:**













A = Screw terminal  
 B = Push-in terminal (PIT)  
 C = Plug-in terminal 6.3 mm x 0.8 mm  
 D = Double plug-in terminal 6.3 mm x 0.8 mm

#### Dimension drawings:



A = Screw terminal

Where to Buy

Distributor		Quantity in Stock		
	Digi-Key	10 in stock	Buy	
	Mouser Electronics	0 in stock	Buy	
	Newark Electronics	0 in stock	Buy	
	Sager	0 in stock	Buy	
	RS Americas	0 in stock	Buy	

Powered by oemsecrets.com

# Mouser Electronics

Authorized Distributor

Click to View Pricing, Inventory, Delivery & Lifecycle Information:

[EAO:](#)

[704.410.0.12](#)