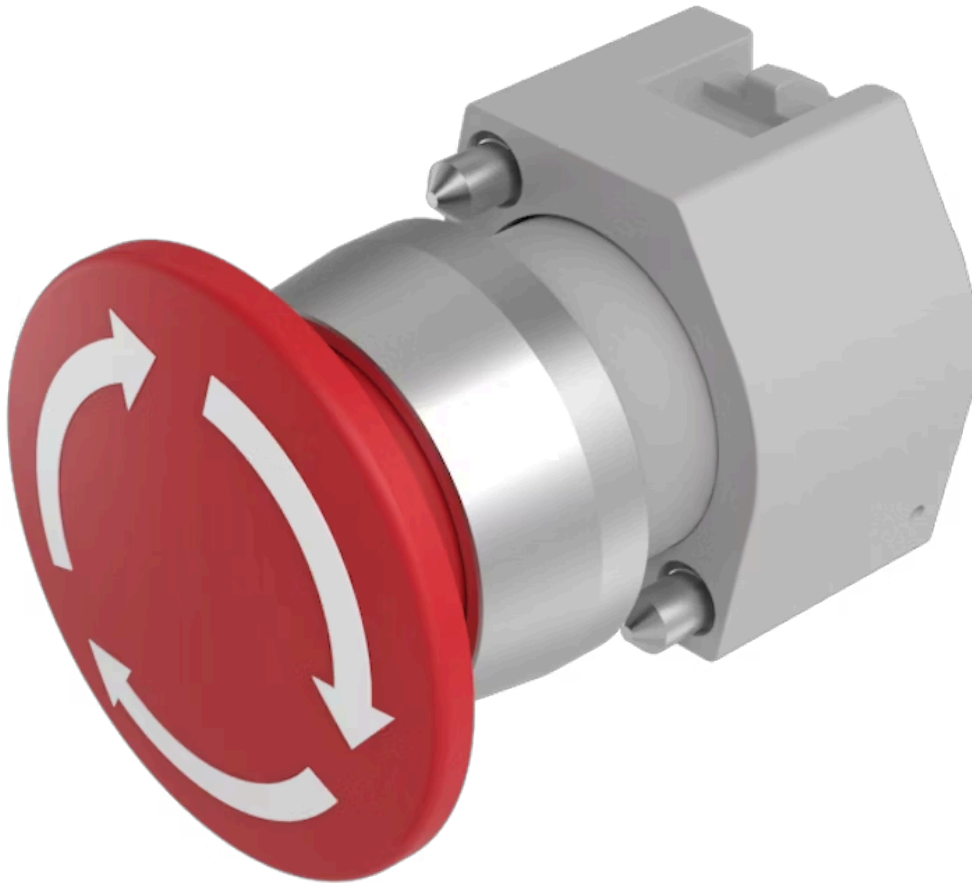


# Actuator

704.075.2



<https://eao.com/p/704.075.2>

Your product:

---



## 704.075.2 Actuator

### FRONT

Front dimension:	Ø 40 mm
Front form:	round
Front bezel colour:	Nature
Front bezel material:	Aluminium

### MOUNTING

Design:	raised
Mounting type:	Panel mounting

### OPERATING-/INDICATION PART

Lens colour:	Red
Lens material:	Plastic
Lens illumination:	non illuminative
Lens shape:	mushroom-head
Lens optics:	opaque

### ELECTRICAL CHARACTERISTICS

Standards:	The switches comply with the "Standards for low-voltage switching devices" DIN EN 60947-1
------------	---

### MECHANICAL CHARACTERISTIC

Switching action:	Maintained
Mechanical lifetime:	≤50 000 cycles of operation

<b>Operating force:</b>	8 N
<b>Operating Travel:</b>	ca. 5.8 mm ± 0.2 mm
<b>Weight:</b>	0.044 kg

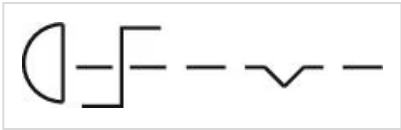
## AMBIENT CONDITION

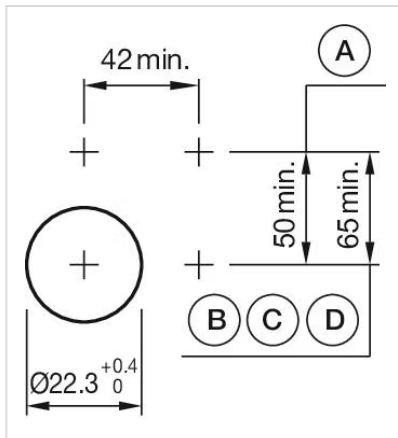
<b>IP Protection:</b>	IP65 front side
<b>Operating temperature:</b>	– 40 °C ... + 55 °C
<b>Storage temperature:</b>	– 40 °C ... + 85 °C

## CERTIFICATE

<b>REACH:</b>	REACH compliant
<b>RoHS:</b>	RoHS compliant

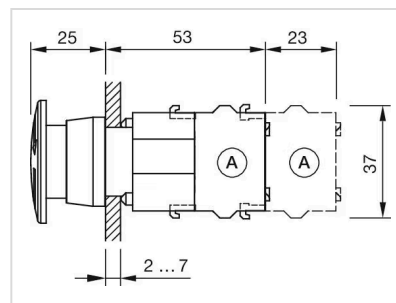
## OTHER

<b>Short Description:</b>	Actuator, Ø 40 mm, mushroom-head, non illuminative, Red, Plastic, opaque, round, Nature, Aluminium, anodised, Maintained
<b>Housing colour:</b>	Grey
<b>Housing material:</b>	Plastic
<b>Marking:</b>	Arrows
<b>Product attributes:</b>	Twist to unlock clockwise
<b>max. number of switching elements:</b>	3
<b>Wiring diagrams:</b>	
<b>Mounting cut-outs:</b>	



A = Screw terminal  
 B = Push-in terminal (PIT)  
 C = Plug-in terminal 6.3 mm x 0.8 mm  
 D = Double plug-in terminal 6.3 mm x 0.8 mm

# **Dimension drawings:**



A = Screw terminal

# Mouser Electronics

Authorized Distributor

Click to View Pricing, Inventory, Delivery & Lifecycle Information:

[EAO:](#)

[EUS-704.075.2/822](#) [EUS-704.075.2/764](#)