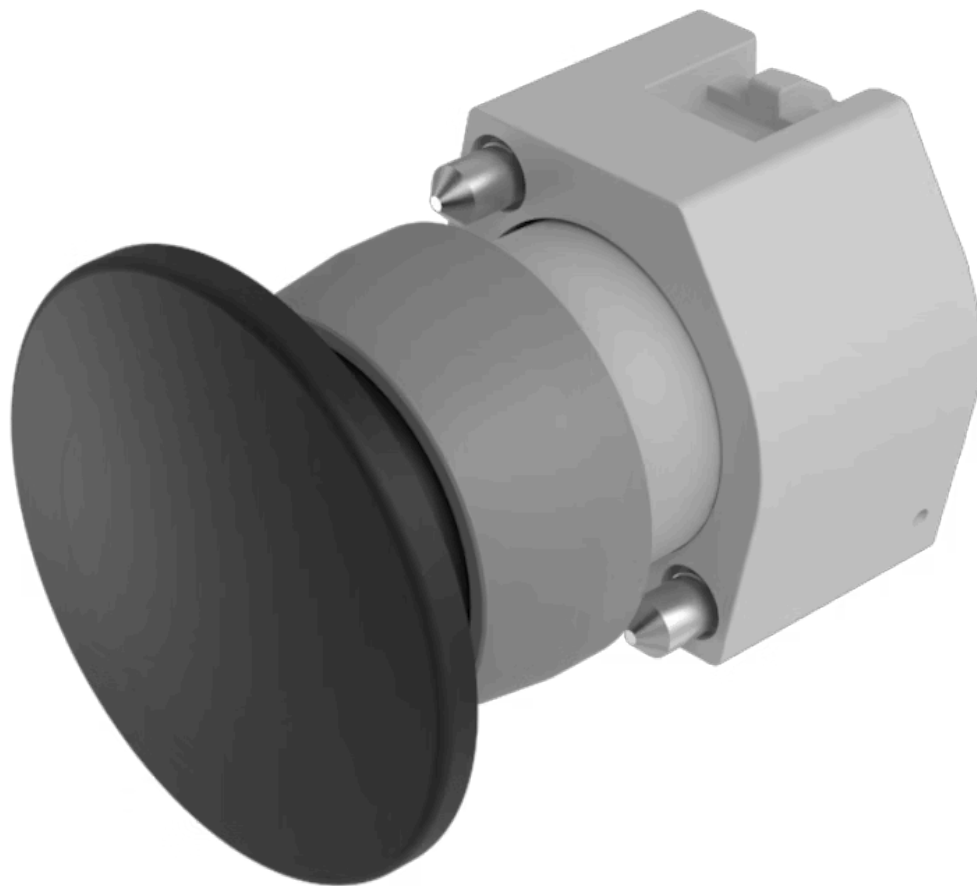


Actuator

704.070.0



<https://eao.com/p/704.070.0>

Your product:



704.070.0 Actuator

FRONT

| | |
|-----------------------|---------|
| Front dimension: | Ø 40 mm |
| Front form: | round |
| Front bezel colour: | Grey |
| Front bezel material: | Plastic |

MOUNTING

| | |
|----------------|----------------|
| Design: | raised |
| Mounting type: | Panel mounting |

OPERATING-/INDICATION PART

| | |
|--------------------|------------------|
| Lens colour: | Black |
| Lens material: | Plastic |
| Lens illumination: | non illuminative |
| Lens shape: | mushroom-head |
| Lens optics: | opaque |

MECHANICAL CHARACTERISTIC

| | |
|----------------------|-----------------------------|
| Switching action: | Momentary |
| Mechanical lifetime: | ≤3 Mio. cycles of operation |
| Weight: | 0.044 kg |

CERTIFICATE

REACH: REACH compliant

RoHS: RoHS compliant

OTHER

Short Description: Actuator, Ø 40 mm, mushroom-head, non illuminative, Black, Plastic, opaque, round, Grey, Plastic, Momentary

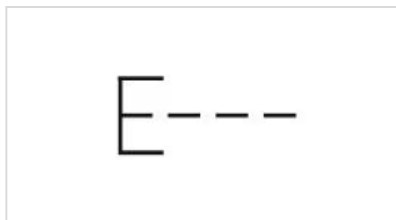
Housing colour: Grey

Housing material: Plastic

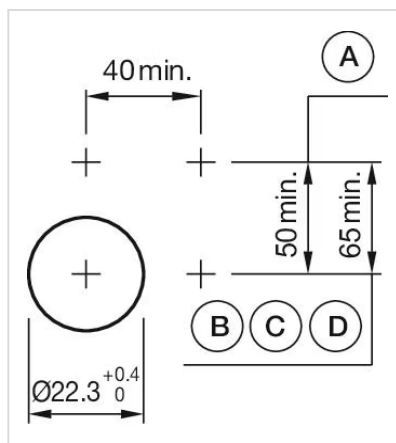
Hints: Max. 3 switching elements can be clipped on

max. number of switching elements: 3

Wiring diagrams:

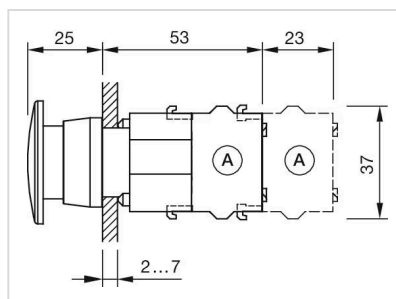


Mounting cut-outs:









A = Screw terminal
B = Push-in terminal (PIT)
C = Plug-in terminal 6.3 mm x 0.8 mm
D = Double plug-in terminal 6.3 mm x 0.8 mm

Dimension drawings:



A = Screw terminal

Where to Buy

| | Distributor | Quantity in Stock | |
|---|--------------------|-------------------|---|
|  | Mouser Electronics | 4 in stock | Buy  |
|  | Digi-Key | 4 in stock | Buy  |
|  | Sager | 0 in stock | Buy  |

Powered by oemsecrets.com

Mouser Electronics

Authorized Distributor

Click to View Pricing, Inventory, Delivery & Lifecycle Information:

[EAO:](#)

[704.070.0](#)