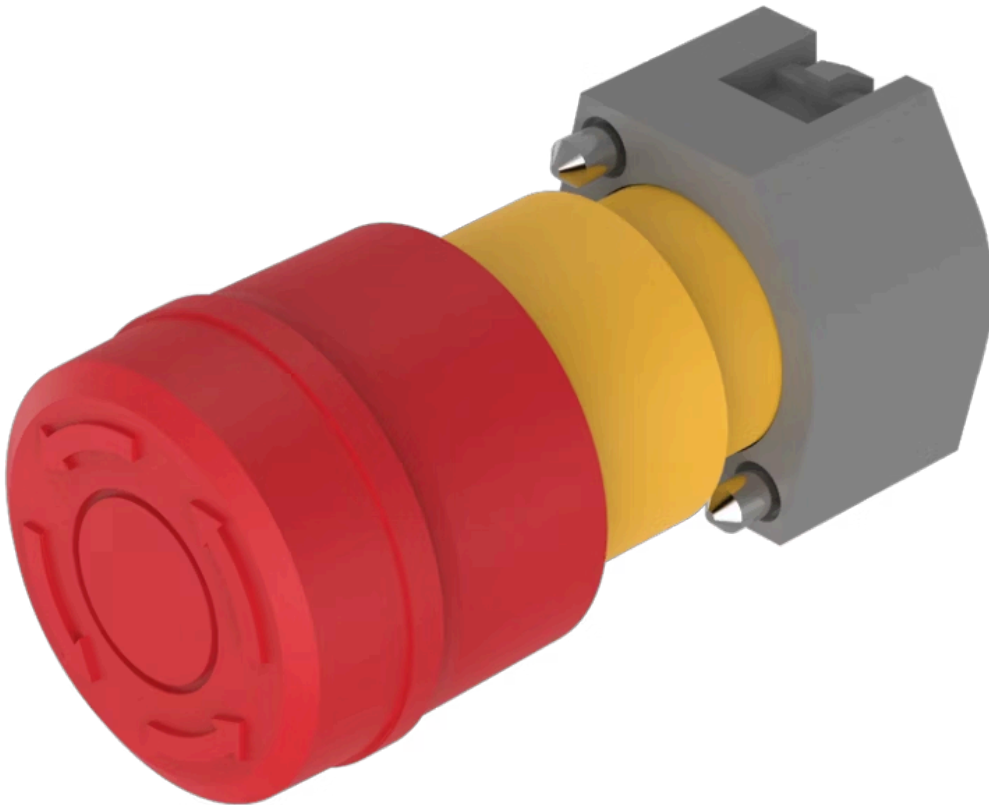


# Actuator

704.064.2



<https://www.eao.com/p/704.064.2>

Your product:

---



## 704.064.2 Actuator

### FRONT

**Front dimension:** Ø 37 mm

**Front form:** Round

### MOUNTING

**Design:** Raised

**Mounting type:** Panel mounting

### OPERATING-/INDICATION PART

**Lens colour:** Red

**Lens material:** Plastic

**Lens illumination:** Non illuminated

**Lens shape:** Mushroom-head

**Lens optics:** opaque

### ELECTRICAL CHARACTERISTICS

**Switching rating:**

**Standards:** The switches comply with the "Standards for low-voltage switching devices" DIN EN 60947-1

### MECHANICAL CHARACTERISTIC

**Switching action:** Maintained

**Release type:** Twist to unlock

**Mechanical lifetime:** ≤50 000 cycles of operation

|                          |                     |
|--------------------------|---------------------|
| <b>Operating force:</b>  | 8 N                 |
| <b>Operating Travel:</b> | ca. 5.8 mm ± 0.2 mm |
| <b>Weight:</b>           | 0.055 kg            |

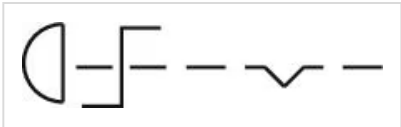
## AMBIENT CONDITION

|                               |                     |
|-------------------------------|---------------------|
| <b>IP Protection:</b>         | IP65 front side     |
| <b>Operating temperature:</b> | – 40 °C ... + 55 °C |
| <b>Storage temperature:</b>   | – 40 °C ... + 85 °C |

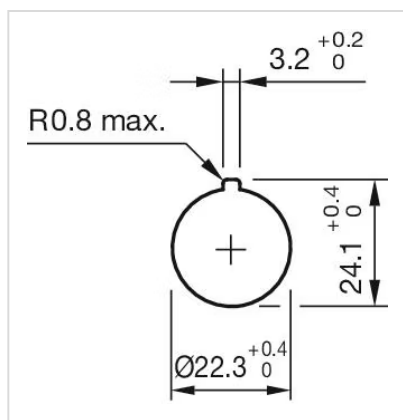
## CERTIFICATE

|               |                 |
|---------------|-----------------|
| <b>REACH:</b> | REACH compliant |
| <b>RoHS:</b>  | RoHS compliant  |

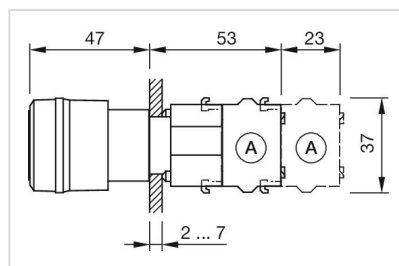
## OTHER

|   |   |
|---|---|
| <b>Short Description:</b>                 | Actuator, Ø 37 mm, Mushroom-head, Non illuminated, Red, Plastic, opaque, Round, Maintained, Twist to unlock |
| <b>Housing colour:</b>                    | Yellow  |
| <b>Housing material:</b>                  | Plastic   |
| <b>Marking:</b>                           | Arrows  |
| <b>Product attributes:</b>                | Twist to unlock clockwise   |
| <b>Hints:</b>                             | Shaft yellow  |
| <b>max. number of switching elements:</b> | 2   |
| <b>Wiring diagrams:</b>                   |                         |

**Mounting cut-outs:**



**Dimension drawings:**



A = Screw terminal

# Mouser Electronics

Authorized Distributor

Click to View Pricing, Inventory, Delivery & Lifecycle Information:

[EAO:](#)

[EUS-704.064.2/098](#) [EUS-704.064.2/1002](#)