

Actuator

704.002.2



<https://eao.com/p/704.002.2>

Your product:



704.002.2 Actuator

FRONT

Front dimension:	Ø 29 mm
Front form:	round
Front bezel colour:	Grey
Front bezel material:	Plastic

MOUNTING

Design:	raised
Mounting type:	Panel mounting

OPERATING-/INDICATION PART

Lens colour:	Red
Lens material:	Plastic
Lens shape:	flush
Lens optics:	transparent
Marking plate colour:	White
Marking plate optics:	translucent
Marking plate illumination:	illuminative

ELECTRICAL CHARACTERISTICS

Standards:	The switches comply with the "Standards for low-voltage switching devices" DIN EN 60947-1
------------	---

MECHANICAL CHARACTERISTIC

Terminal: Screw terminal

Weight: 0.05 kg

AMBIENT CONDITION

IP Protection: IP65 front side

Operating temperature: – 40 °C ... + 55 °C

Storage temperature: – 40 °C ... + 85 °C

CERTIFICATE

REACH: REACH compliant

RoHS: RoHS compliant

OTHER

Short Description: Actuator, Ø 29 mm, flush, Red, Plastic, transparent, round, Grey, Plastic, Screw terminal

Housing colour: Grey

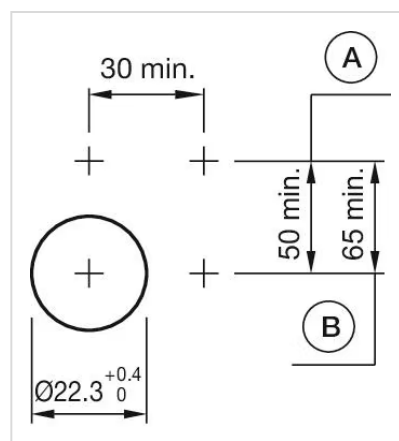
Housing material: Plastic

Hints: Filament lamp or LED

Wiring diagrams:

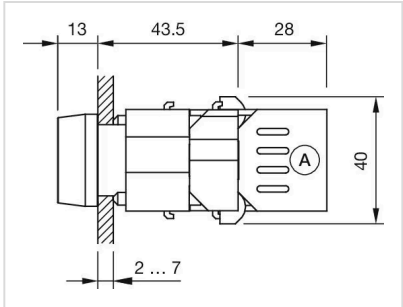
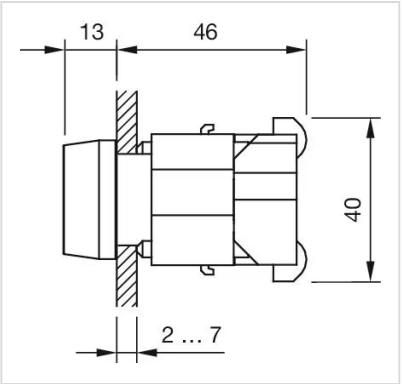


Mounting cut-outs:













A = Screw terminal
B = Push-in terminal (PIT)

Dimension drawings:



A = Screw terminal

Where to Buy

Distributor		Quantity in Stock		
	Mouser Electronics	0 in stock	Buy	
	Digi-Key	0 in stock	Buy	
	Sager	0 in stock	Buy	
	Newark Electronics	0 in stock	Buy	
	RS Americas	0 in stock	Buy	

Mouser Electronics

Authorized Distributor

Click to View Pricing, Inventory, Delivery & Lifecycle Information:

[EAO:](#)

[704.002.2](#)