

# Actuator

61-4810.0

Distribution by  
Mouser



<https://mouser.eao.com/p/61-4810.0>

Your product:

---



## 61-4810.0 Actuator

### OPERATING-/INDICATION PART

**Lever material:** plastic

**Lever shape:** short

### MECHANICAL CHARACTERISTIC

**Switching action:** Momentary - Rest - Maintained

**Switching positions:** 3 positions

**Switching angle:** 42° left / 90° right

**Mechanical lifetime:** According to DIN/IEC 60512-5-6 and EN/IEC 60947-5-1, 100 000 cycles of operation

**Operating force:** 0.025...0.1 Nm snap-action switching element, 0.4 ... 0.16 Nm slow-make switching element

**Operating Travel:** ca. 42°/90°

**Tightening torque:** Max. 0.5 Nm

**Weight:** 0.006 kg

### AMBIENT CONDITION

**IP Protection:** IP40 rear side, according to EN IEC 60529, IP67 front side, according to EN IEC 60529

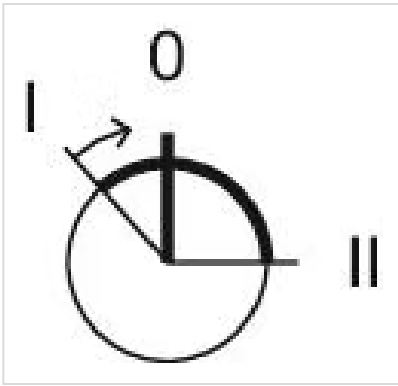
**Storage temperature:** – 40 °C ... + 85 °C

### OTHER

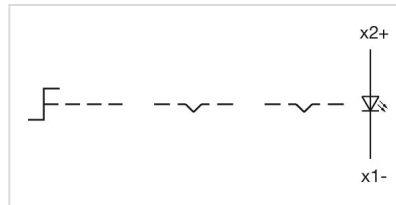
**Short Description:** Actuator, optional illuminative, short, Momentary - Rest - Maintained

**Housing material:** Plastic, according to UL 94 V0, self-extinguishing

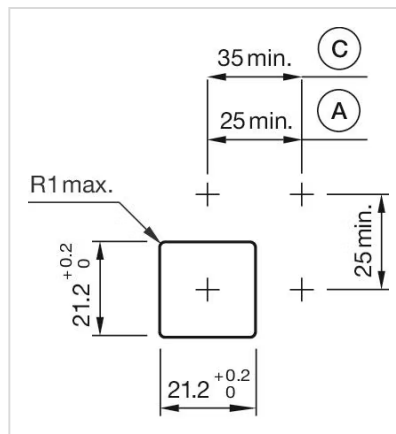
**Switching positions:**



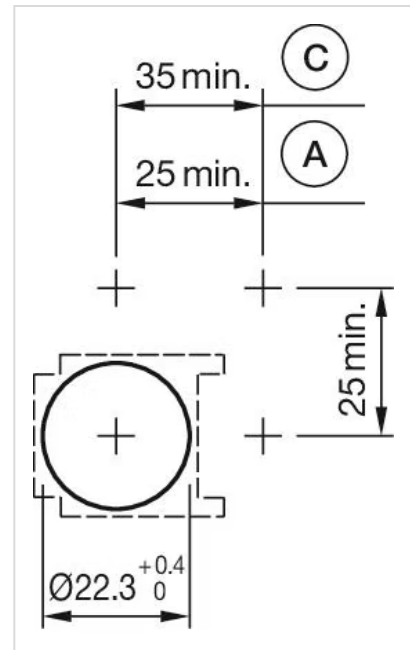
#### Wiring diagrams:



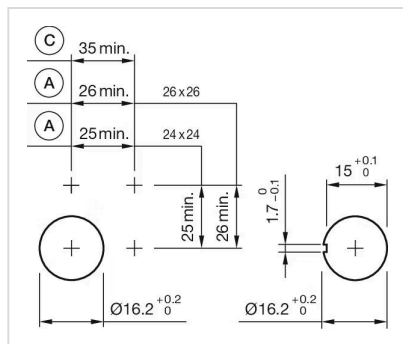
#### Mounting cut-outs:



A = Solder/Plug-in terminal 2.8 mm x 0.5 mm  
C = Screw terminal

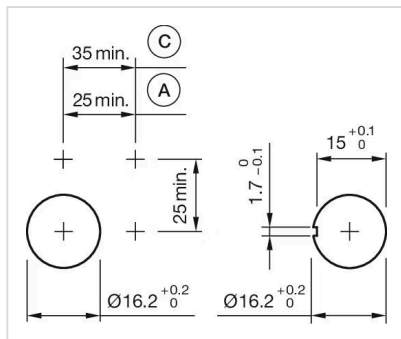


A = Solder/Plug-in terminal 2.8 mm x 0.5 mm  
C = Screw terminal



A = Solder/Plug-in terminal 2.8 mm x 0.5 mm

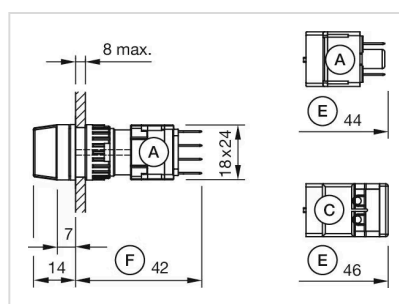
C = Screw terminal



A = Solder/Plug-in terminal 2.8 mm x 0.5 mm

C = Screw terminal

### Dimension drawings:

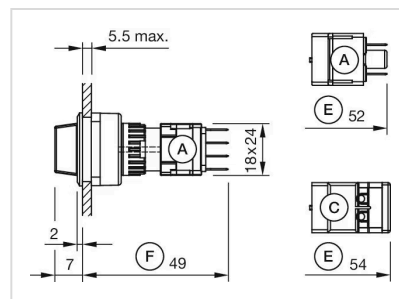


A = Plug-in terminal 2.8 mm x 0.5 mm

C = Screw terminal

E = Slow-make switching element

F = Snap-action switching element

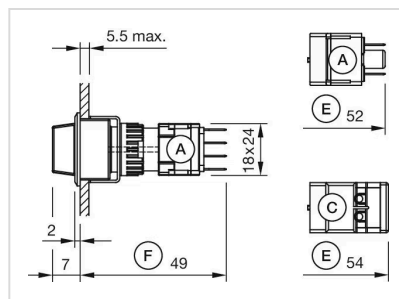


A = Plug-in terminal 2.8 mm x 0.5 mm

C = Screw terminal

E = Slow-make switching element

F = Snap-action switching element

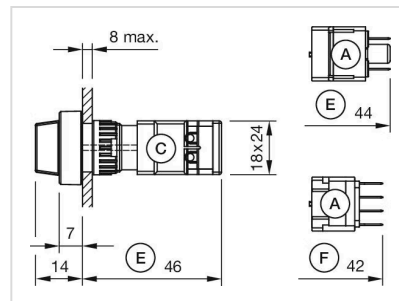


A = Plug-in terminal 2.8 mm x 0.5 mm

C = Screw terminal

E = Slow-make switching element

F = Snap-action switching element



A = Plug-in terminal 2.8 mm x 0.5 mm

C = Screw terminal

E = Slow-make switching element

F = Snap-action switching element

# Mouser Electronics

Authorized Distributor

Click to View Pricing, Inventory, Delivery & Lifecycle Information:

[EAO:](#)

[61-4810.0](#)