

Actuator

61-
2802.0/D



<https://eao.com/p/61-2802.0/D>

Your product:



61-2802.0/D Actuator

MOUNTING

Mounting type: Panel mounting

ELECTRICAL CHARACTERISTICS

Electrostatic discharge (ESD): 11 kV

MECHANICAL CHARACTERISTIC

Switching action: Maintained (a) - Rest - Momentary

Switching positions: 3 positions

Switching angle: 90° left / 42° right

Mechanical lifetime: According to DIN/IEC 60512-5-6 and EN/IEC 60947-5-1, 50 000 cycles of operation

Operating force: 0.025...0.1 Nm snap-action switching element, 0.4 ... 0.16 Nm slow-make switching element

Operating Travel: ca. 42°/90°

Tightening torque: Max. 0.5 Nm

Weight: 0.065 kg

AMBIENT CONDITION

IP Protection: IP40 rear side, according to EN IEC 60529, IP67 front side, according to EN IEC 60529

Operating temperature: – 25 °C ... + 55 °C

Storage temperature: – 40 °C ... + 85 °C

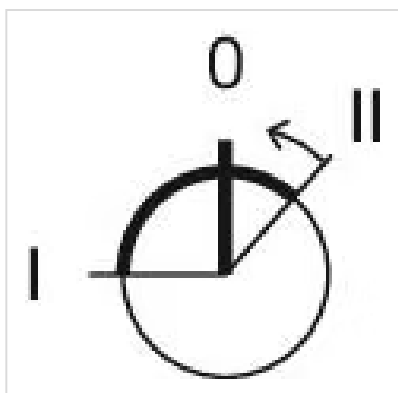
CERTIFICATE

RoHS: RoHS compliant

Short Description: Actuator, Maintained (a) - Rest - Momentary

Housing material:	Plastic, according to UL 94 V0, self-extinguishing
--------------------------	--

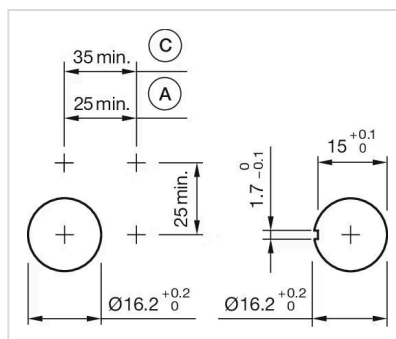
Switching positions:



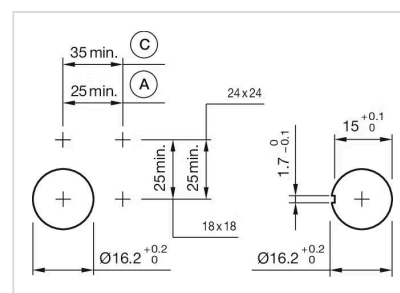
Wiring diagrams:



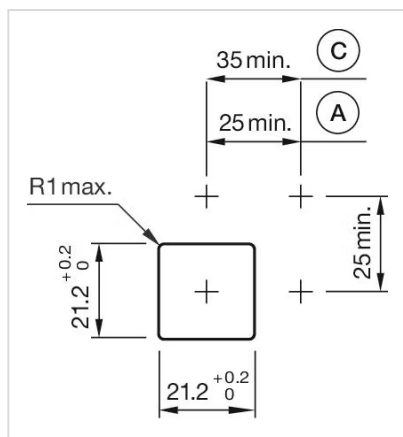
Mounting cut-outs:



C = Screw terminal

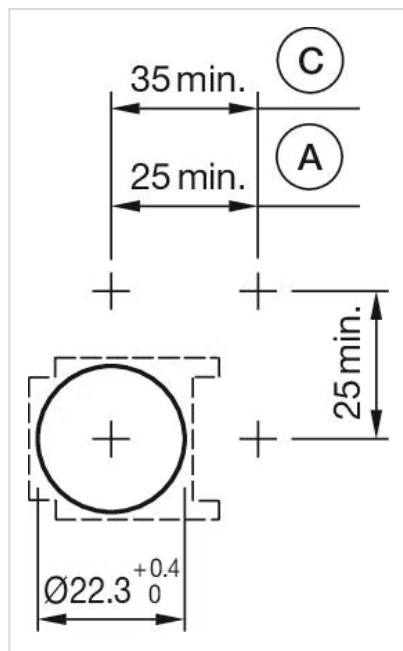


A = Solder/Plug-in terminal 2.8 mm x 0.5 mm
C = Screw terminal



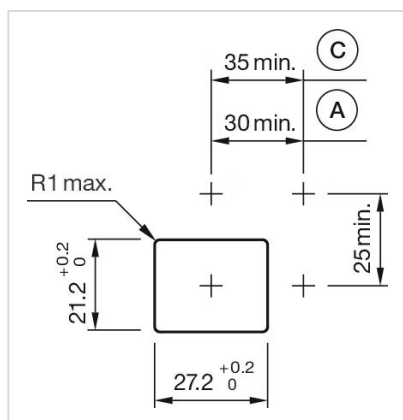
A = Solder/Plug-in terminal 2.8 mm x 0.5 mm

C = Screw terminal



A = Solder/Plug-in terminal 2.8 mm x 0.5 mm

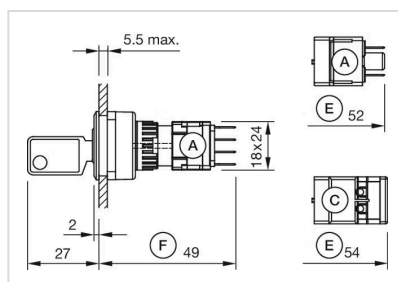
C = Screw terminal



A = Solder/Plug-in terminal 2.8 mm x 0.5 mm

C = Screw terminal

Dimension drawings:

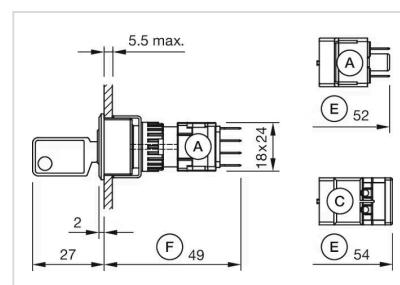


A = Plug-in terminal 2.8 mm x 0.5 mm

C = Screw terminal

E = Slow-make switching element

F = Snap-action switching element

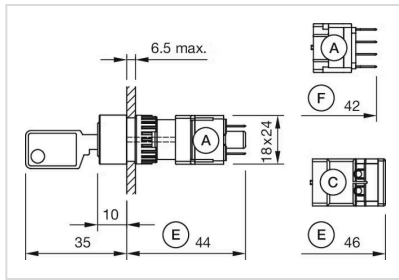


A = Plug-in terminal 2.8 mm x 0.5 mm

C = Screw terminal











E = Slow-make switching element

F = Snap-action switching element



A = Plug-in terminal 2.8 mm x 0.5 mm
 C = Screw terminal
 E = Slow-make switching element
 F = Snap-action switching element

Where to Buy

Distributor		Quantity in Stock	
	Sager	60 in stock	Buy 
	Digi-Key	18 in stock	Buy 
	Mouser Electronics	17 in stock	Buy 
	Transfer Multisort Elektronik	4 in stock	Buy 
	element14 Singapore	3 in stock	Buy 

[Show more](#) 

Mouser Electronics

Authorized Distributor

Click to View Pricing, Inventory, Delivery & Lifecycle Information:

[EAO:](#)

[61-2802.0/D](#)