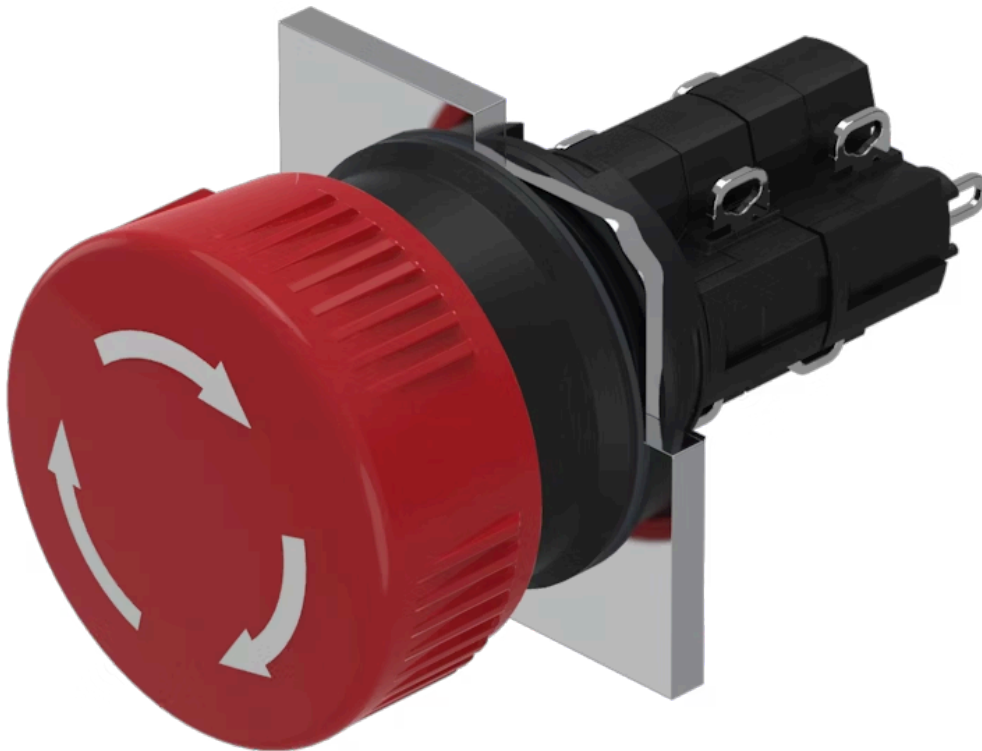


Actuator

51-
259.025

Distribution by
Mouser



<https://mouser.eao.com/p/51-259.025>

Your product:



51-259.025 Actuator

FRONT

Front dimension: Ø 24,5 mm

Front form: round

MOUNTING

Design: raised

Mounting type: Panel mounting

OPERATING-/INDICATION PART

Lens colour: Red

Lens material: Plastic

Lens illumination: non illuminative

Lens shape: mushroom-head

Lens optics: opaque

ELECTRICAL CHARACTERISTICS

Contacts: 2 NC / 2 NO

Switching voltage and switching current: 250 VAC, 5 A (ohmic)
24 VDC, 2 A (inductive, L:R = 30 ms)

Switching rating: 250 V @ 5 A

MECHANICAL CHARACTERISTIC

Terminal: Soldering terminal

Contact material: Gold

| | |
|-----------------------------|--|
| Switching action: | Maintained |
| Switching system: | Snap-action switching element |
| Switching system: | Self-cleaning, double-break snap action switching system, 1 normally closed and 1 normally open contact per element. |
| Mechanical lifetime: | 100 000 cycles of operation |
| Operating force: | 18 ... 21 N (depending on the switching element) |
| Tightening torque: | Fixing nut max. 0.5 Nm |
| Weight: | 0.011 kg |

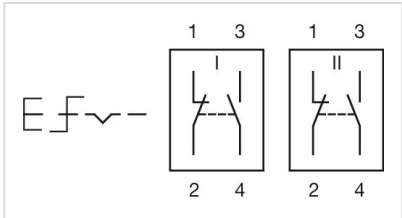
AMBIENT CONDITION

| | |
|-------------------------------|---------------------------------|
| IP front protection: | IP65, according to DIN EN 60529 |
| Operating temperature: | – 25 °C ... + 55 °C |
| Storage temperature: | – 40 °C ... + 85 °C |

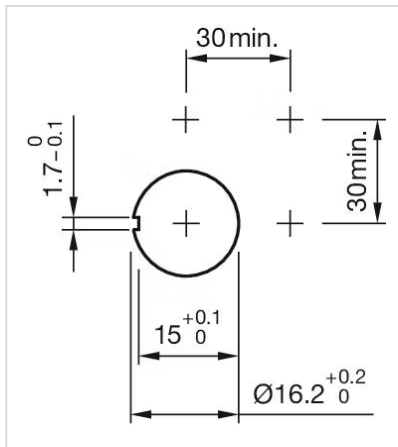
CERTIFICATE

| | |
|----------------------|--|
| Approbations: | CB (IEC 61058-1), CSA, ENEC (EN 61058-1), UL |
| Conformities: | CE, UKCA, 2006 / 42 / EC (MD), 2011 / 65 / EC (RoHS) |
| REACH: | REACH compliant |
| RoHS: | RoHS compliant |

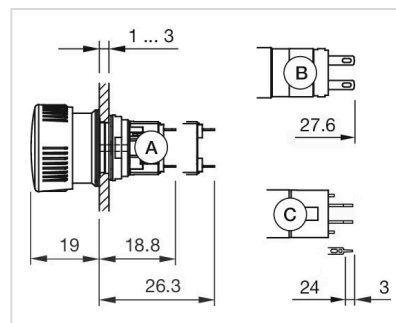
OTHER

| | |
|---------------------------|---|
| Short Description: | Actuator, Ø 24,5 mm, mushroom-head, non illuminative, Red, Plastic, opaque, round, 2 NC / 2 NO, Maintained, Soldering terminal, IP65, according to DIN EN 60529 |
| Housing colour: | Black |
| Hints: | Marking arrows |
| Wiring diagrams: |  |

Mounting cut-outs:



Dimension drawings:



A = Solder terminal
 B = Plug-in terminal $2.8 \text{ mm} \times 0.5 \text{ mm}$
 C = Universal terminal $2.0 \text{ mm} \times 0.5 \text{ mm}$

Mouser Electronics

Authorized Distributor

Click to View Pricing, Inventory, Delivery & Lifecycle Information:

[EAO:](#)

[51-259.025](#)