

# Actuator

46-  
2W0S.1CN0.004



<https://eao.com/p/46-2W0S.1CN0.004>

Your product:

---



## 46-2W0S.1CN0.004 Actuator

### FRONT

Front dimension:	Ø 30 mm
Front form:	round
Front bezel colour:	Black
Front bezel material:	Plastic

### MOUNTING

Design:	raised
Mounting cut-out:	Ø 22.3 mm
Mounting type:	Panel mounting

### OPERATING-/INDICATION PART

Lever colour:	White
Lever bar colour:	White
Lever material:	plastic
Lever shape:	short

### ELECTRICAL CHARACTERISTICS

Protection class:	II
-------------------	----

### MECHANICAL CHARACTERISTIC

Switching action:	Momentary - Rest - Momentary
Switching positions:	3 positions

<b>Switching angle:</b>	45° left / 45° right
<b>Mechanical lifetime:</b>	1 Mio. cycles of operation
<b>Tightening torque:</b>	2 ... 3 Nm (17.7 ... 26.6 Lb-in)
<b>Weight:</b>	0.027 kg

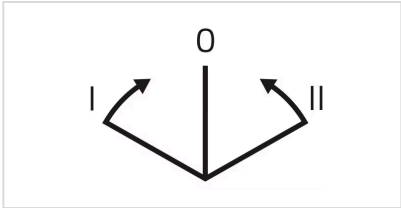
## AMBIENT CONDITION

<b>IP front protection:</b>	IP65
<b>IK front protection:</b>	IK03
<b>Operating temperature:</b>	- 25 °C ... + 55 °C
<b>Shock resistance:</b>	30g, 18ms (EN-IEC 60068-2-27)
<b>Vibration resistance:</b>	5g f= 2...500Hz (EN-IEC 60068-2-6)
<b>Climate resistance:</b>	+25°C-97%RH / +45°C-93%RH (IEC-EN60068-2-30)

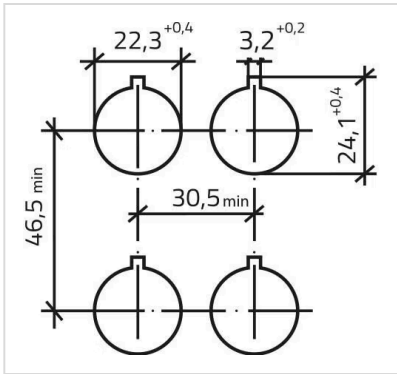
## CERTIFICATE

<b>Conformities:</b>	CE
<b>REACH:</b>	REACH compliant
<b>RoHS:</b>	RoHS compliant
<b>Standards:</b>	CSA C22-2, IEC EN 60947-1, IEC EN 60947-5-1, UL508

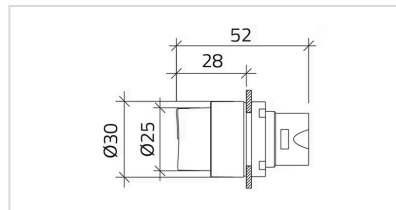
## OTHER

<b>Short Description:</b>	Actuator, Ø 22.3 mm, Ø 30 mm, illuminative, White, short, round, Black, Plastic, Momentary - Rest - Momentary, IP65, IK03
<b>Housing colour:</b>	Black
<b>Housing material:</b>	Plastic
<b>max. number of switching elements:</b>	2
<b>Switching positions:</b>	

**Mounting cut-outs:**



**Dimension drawings:**



# Mouser Electronics

Authorized Distributor

Click to View Pricing, Inventory, Delivery & Lifecycle Information:

[EAO:](#)

[46-2W0S.1CN0.004](#)