

Actuator

31-
152.0252



<https://eao.com/p/31-152.0252>

Your product:



31-152.0252

Actuator

FRONT

Front dimension:	18 mm x 18 mm
Front form:	square
Front bezel colour:	Black
Front bezel material:	Plastic

MOUNTING

Design:	raised
Mounting type:	Panel mounting
Mounting cut-out:	Ø 16 mm

OPERATING-/INDICATION PART

Lens illumination:	illuminative
--------------------	--------------

ELECTRICAL CHARACTERISTICS

Thermal current I _{th} :	3 A
Electric strength:	2500 VAC, 50 Hz, 1 minute, as per IEC 60512-2-11 between all terminals and earth
Electrical lifetime:	50 000 cycles of operation
Standards:	According to EN/IEC 61058-1
Contacts:	2 NC / 2 NO
Switching voltage and switching current:	

250 VAC, 5 A (ohmic)
250 VAC, 3 A (Soldering terminal)
250 VAC, 2 A (inductive, $\cos(\phi) = 0.7$)
125 VAC, 3 A (inductive, $\cos(\phi) = 0.7$)
220 VDC, 0.1 A (inductive, L:R = 30 ms)
60 VDC, 0.7 A (inductive, L:R = 30 ms)
24 VDC, 2 A (inductive, L:R = 30 ms)

Protection class: II

Rated Operational Voltage Ue: 250 VAC/VDC

MECHANICAL CHARACTERISTIC

Switching system: Self-cleaning, double-break snap action switching system (contact opening width 2 mm x 0.5 mm), 1 normally closed and 1 normally open contact per element.

Terminal: Soldering terminal

Switching system: Snap-action switching element

Operating Travel: ca. 3 mm

Contact material: Gold

Mechanical lifetime: 2 Mio. cycles of operation

Wire cross section: Snap-action switching element with tinned soldering terminals at the sides
Max. wire diameter 2 wires à 1.2 mm
Max. wire cross-section of stranded cable 1 x 1 mm²

Tightening torque: Fixing nut max. 0.5 Nm

Operating force: 2 N ... 5,5 N, depending on the number of switching elements

Weight: 0.008 kg

Switching action: Momentary

AMBIENT CONDITION

Shock resistance: 15 g for 11 ms, as per IEC 60512-4-3, IEC 60068-2-27 (Single impacts, semi-sinusoidal)

Storage temperature: – 40 °C ... + 85 °C

Vibration resistance: 10 g at 10 Hz...2000 Hz, amplitude 1.5 mm (Sinusoidal), according to DIN EN 60512-4-4, DIN EN 60068-2-6

IP Protection: IP40 front side, IP67 with front protective cap

Operating temperature: – 25 °C ... + 55 °C, mounted as a block, make sure the heat can escape freely

Climate resistance: Standard condition according to IEC 60068-2-3
Changing condition according to IEC 60068-2-14

CERTIFICATE

Conformities:

CE, UKCA, 2011 / 65 / EC (RoHS), 2014 / 35 / EU (LVD)

Approbations:

CB (IEC 61058-1), CSA, DNV, EAC, ENEC (EN 61058-1), UL, VDE

OTHER**Housing colour:**

Black

Short Description:

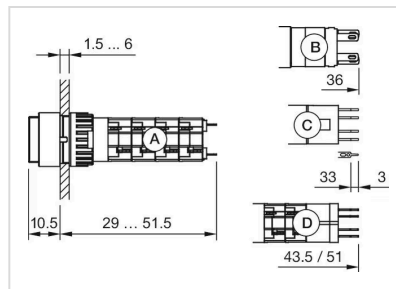
Actuator, Ø 16 mm, 18 mm x 18 mm, illuminative, square, Black, Plastic, 2 NC / 2 NO, Momentary, Soldering terminal

max. number of switching elements:

2

Internal size:

15,3 mm x 15,3 mm

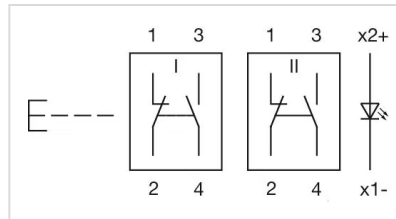
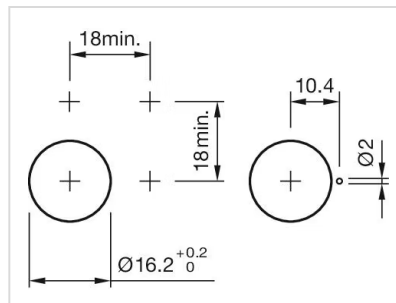
Dimension drawings:

A = Solder terminal

B = Plug-in terminal 2.8 mm x 0.5 mm

C = Universal terminal 2.0 mm x 0.5 mm

D = Universal-Solder terminal

Wiring diagrams:**Mounting cut-outs:**

Mouser Electronics

Authorized Distributor

Click to View Pricing, Inventory, Delivery & Lifecycle Information:

[EAO:](#)

[31-152.0252](#)