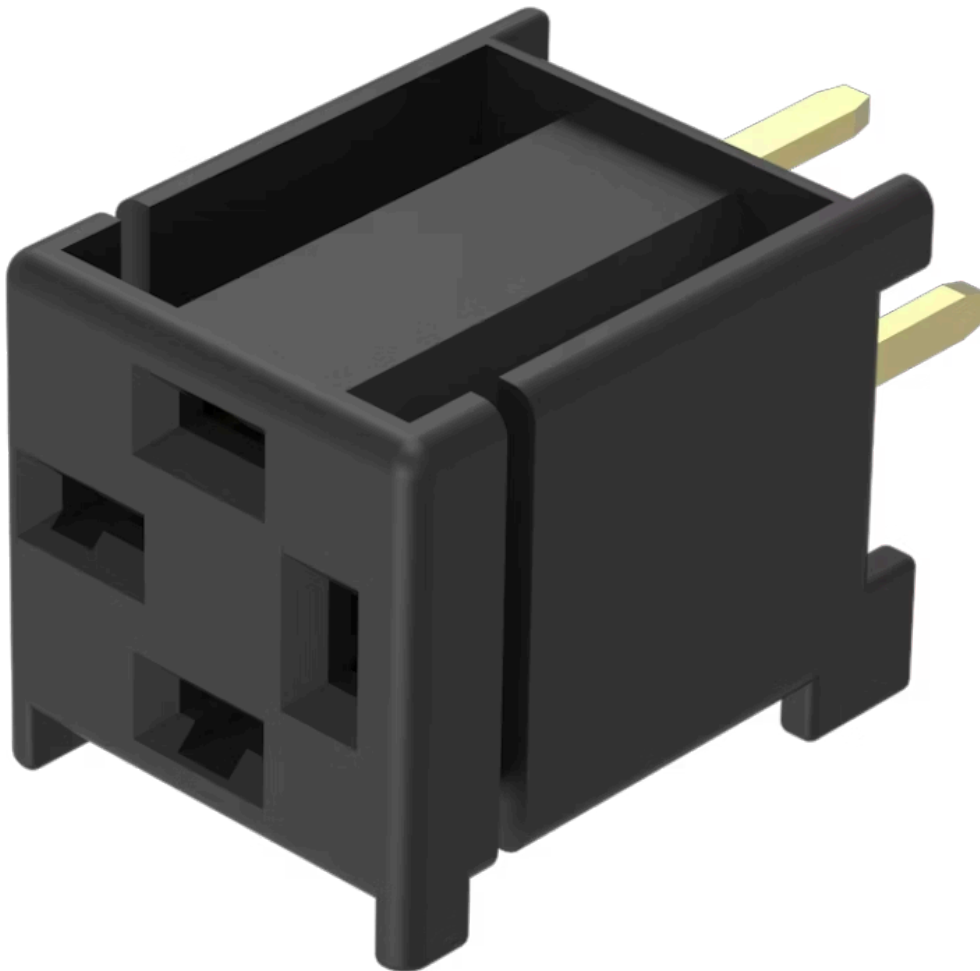


PCB plug-in base

19-940



<https://eao.com/p/19-940>

Your product:



19-940

PCB plug-in base

MECHANICAL CHARACTERISTIC

Terminal: PCB terminal

Weight: 0.001 kg

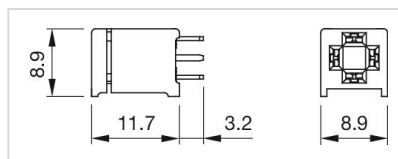
OTHER

Short Description: PCB plug-in base, PCB terminal, Axial

Titel Accessory: PCB plug-in base

Pins: Axial

Dimension drawings:



for Part No. 19-940

Mouser Electronics

Authorized Distributor

Click to View Pricing, Inventory, Delivery & Lifecycle Information:

[EAO:](#)

[19-940](#)