

**SERIES 19**  
**2" Diameter, 15 Amp**

**FEATURES**

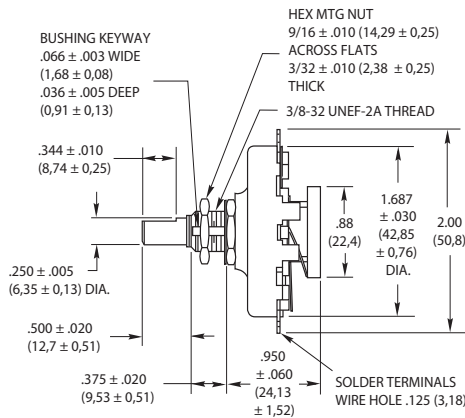


- UL Recognized
- Rugged Construction
- Choice of Termination



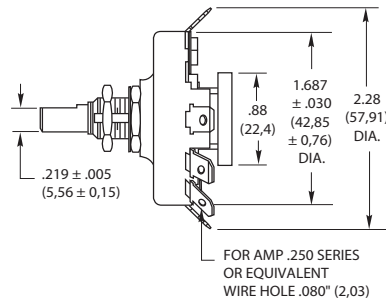
**DIMENSIONS** In inches (and millimeters)

**Solder Lug Terminals**

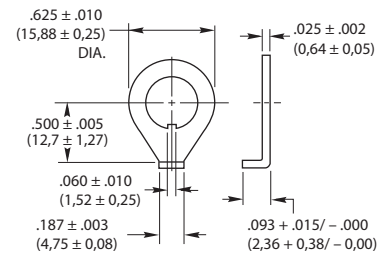


**'Faston' Terminals**

All dimensions not shown are the same as the Solder Lug Terminals.



**Non-Turn Washer Detail**



Grayhill part number and date code marked on label. Customer part number marked on request.

**SPECIFICATIONS**

**Electrical Rating**

**Rated:** UL Recognition: File Number E35289  
 15 Amps, 120 Vac, non-inductive load.  
 One Amp, 120 Vdc, non-inductive load.

**Additional Grayhill Rating:** 7.5 Amps, 220 Vac, non-inductive load.

This rating is based on the following criteria:  
 Overload—50 operations at 125% rated ac load and 150% rated DC load.  
 Endurance—6000 operations at rated load with 900 Vac dielectric strength before and after test.

Temperature Rise—Not to exceed 30°C when carrying rated ac load after endurance test.  
 Contacts will carry 20 Amps at 115 volts AC with 30°C maximum temperature rise.

**Contact Resistance:** (Measured at 2 Vdc and approximately 100 mA) for new switch approximately 10 milliohms.  
 Insulation Resistance: Approximately 100,000 Mohms. Between mutually insulated parts.

**Voltage Breakdown:** Approximately 2500 Vac between mutually insulated parts.

**Materials and Finishes**  
**Rotor Contact:** Silver alloy  
**Stator Contact:** Silver alloy  
**Shaft:** 303 Stainless steel  
**Stop Rivet:** Steel, tin/zinc-plated  
**Mounting Bushing:** Brass, tin/zinc-plated  
**Base and Drive Hub:** Heat resistant, electrical grade phenolic.

**Materials and Finishes**

**Rotor Contact:** Silver alloy  
**Stator Contact:** Silver alloy  
**Shaft:** 303 Stainless steel  
**Stop Rivet:** Steel, tin/zinc-plated  
**Mounting Bushing:** Brass, tin/zinc-plated  
**Base and Drive Hub:** Heat resistant, electrical grade phenolic.

**Mounting Nut:** Brass, tin/zinc-plated or stainless steel.

**Detent Mechanism:** Brass, silver-plated

**"Faston" Terminal:** Brass, silver-plated

**Solder Terminal:** Brass, silver-plated

**Mounting Hardware:** One mounting nut 9/16" across flats, 3/32" thick and one non-turn washer (see detail) are supplied with each switch.

**Additional Characteristics**

**Single Pole, Single Deck:** 2 to 11 positions plus common 30° Indexing.

**Contacts:** Non-shorting type

**Stops:** A rivet provides the fixed stop on all switches. Minimum number of positions is 2, and maximum is 11. Terminal 12, the common, is isolated from rotation.

**Rotational Torque:** 12 to 36 ounce-inches on average for new switches.

**Contact Force:** Approximately 12 ounces

**Shaft Flat Orientation:** Opposite point of contact (see circuit diagram).

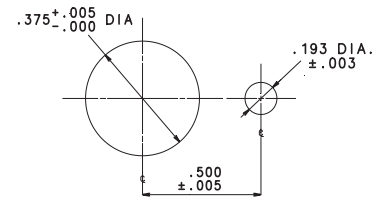
**Circuit Diagram viewed from shaft end with switch in position #1**



**Available from your local Grayhill Distributor.**

For prices and discounts, contact a local Sales Office, an authorized local Distributor or Grayhill.

**Recommended Panel Cut-Out for Series 19**



**ACCESSORIES**

**Non-Turn Washer**

Brass, tin/zinc-plated washer, detailed above may be purchased as a separate item.  
 Part No. 19C1014.

**ORDERING INFORMATION**

**Part Numbers:** Designate as follows, using the 2 digits after the dash to indicate the number of positions.

**For Faston Terminal:**  
 Use 19101-02UL through 19101-11UL

**For Solder Terminal:**  
 Use 19001-02UL through 19001-11UL

**Specials:** Not available through Distributors. For special shafts, bushings, etc. contact Grayhill.

# Mouser Electronics

Authorized Distributor

Click to View Pricing, Inventory, Delivery & Lifecycle Information:

## Grayhill:

[19001-03UL](#) [19001-04UL](#) [19001-06UL](#) [19101-03UL](#) [19101-04UL](#) [19101-05UL](#) [19101-08UL](#) [19101-10UL](#) [19001-10UL](#) [19101-11UL](#) [19001-11UL](#) [19001-05UL](#) [19001-08UL](#) [19101-09UL](#) [19101-12UL](#) [19001-02UL](#) [19001-07UL](#) [19101-07UL](#) [19101-02UL](#) [19101-06UL](#) [19001-09UL](#)