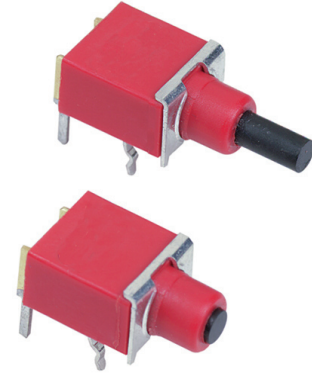


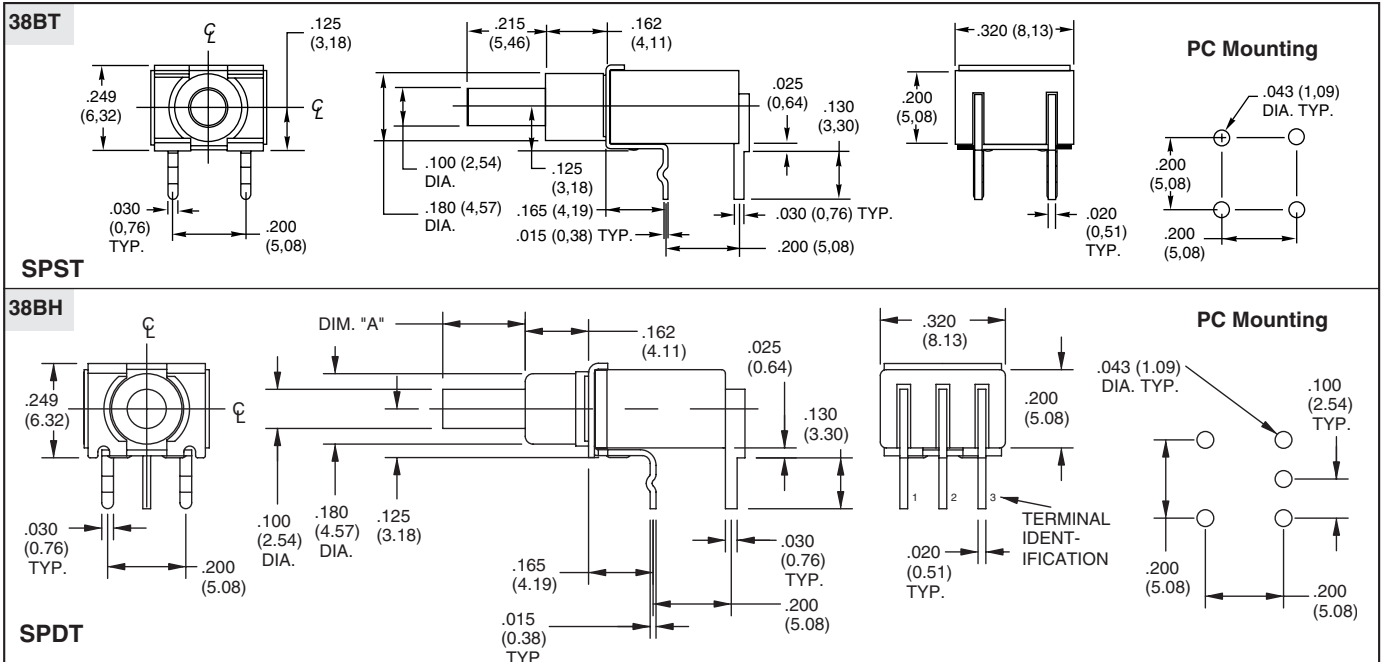
**SERIES 38BT and 38BH**  
Sub-Miniature Horizontal PC Mount

**FEATURES**

- Drop-In Replacement for Industry Standard
- Sealed Plunger Option
- Printed Circuit Board Mount
- SPST and SPDT, Momentary Contact



**DIMENSIONS** in inches (and millimeters)



Unless otherwise indicated, tolerances are ± .010 (0,25)

**SPECIFICATIONS**

**Rating Criteria**

**Operating Life:** 80,000 make-and-break cycles at full load

**Contact Rating (resistive load):**

*Gold Contacts:* 0.4 VA maximum at 20 Vac or Vdc maximum

*Silver Contacts:* 1.0 Amp maximum at 120 Vac or 28 Vdc

**Contact Resistance:** Below 20 milliohms typical initial at 2-4 Vdc, 100 mA

**Insulation Resistance:** 1000 megaohms min.

**Voltage Breakdown:** 1000 Vrms minimum at sea level

**Operating Temperature:** -30°C. to +85°C.

**Solderability:** Per MIL-STD-202F, Method 208D, or EIA RS-186E Method 9 (1 hour steam aging)

**Materials and Finishes**

**Base and Cover:** Thermoplastic (UL 94V-0)

**Plunger:** Thermoplastic (UL 94V-0), (S versions include an internal o-ring seal)

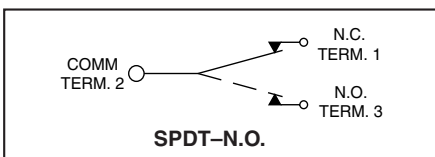
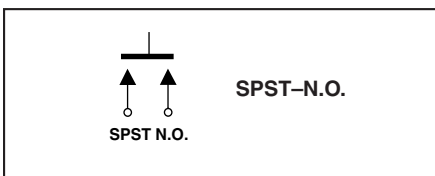
**Terminals:** Copper alloy, gold or silver plate (as specified) over nickel plate

**Spring:** Plated Music Wire

**Contact System:** Copper alloy, gold or silver plate (as specified) over nickel plate

**Switch Support:** Brass, tin-plated

**CIRCUITRY**



**ORDERING INFORMATION**

**Series:** 38BT = SPST, Momentary, Thru Hole  
38BH = SPDT, Momentary, Thru Hole

**Dimension A:** 0 = 0.020" 4 = 0.215"

**Seal:** S = O-Ring Seal, N = No Seal

**Contact Material:** 1 = Solder Dip over Gold  
2 = Solder Dip over Silver  
3 = Gold - RoHS Compliant  
4 = Silver - RoHS Compliant

**Orientation:** H = Horizontal to PCB

# Mouser Electronics

Authorized Distributor

Click to View Pricing, Inventory, Delivery & Lifecycle Information:

## Grayhill:

[38BT-4-H-4-S](#) [38BH-4-H-2-S](#) [38BH-4-H-4-S](#) [38BT-0-H-3-S](#) [38BT-4-H-2-S](#) [38BT-0-H-3-N](#) [38BH-0-H-3-S](#) [38BH-4-H-2-N](#) [38BT-0-H-1-S](#) [38BT-0-H-1-N](#) [38BT-0-H-2-N](#) [38BT-4-H-1-S](#) [38BT-4-H-3-S](#) [38BH-0-H-1-S](#) [38BH-4-H-1-S](#)  
[38BT-0-H-2-S](#) [38BH-4-H-3-N](#) [38BT-0-H-4-N](#) [38BT-4-H-4-N](#)