



Optical Encoders

SERIES 62H

High Torque, Concentric Shaft

FEATURES

- High Rotational Torque Provides Positive Tactile Feedback
- Optically Coupled for More than a Million Cycles
- Optional Integral Pushbutton
- Compatible with CMOS, TTL and HCMOS Logic

- Available in 8, 12 and 16 Detent Positions
- Choice of Cable Length and Terminations

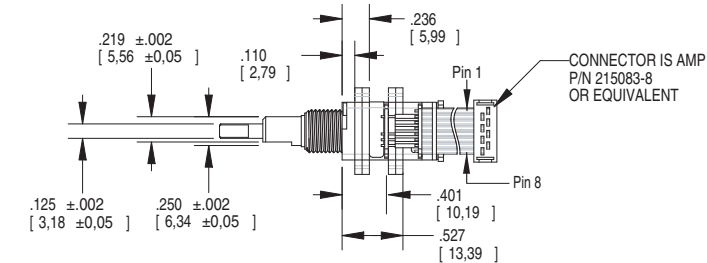
APPLICATIONS

- Avionics

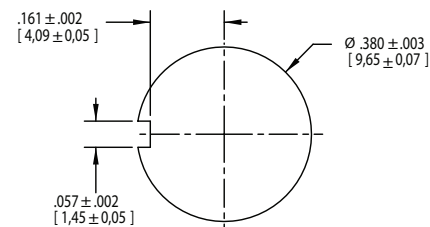


DIMENSIONS in inches (and millimeters)

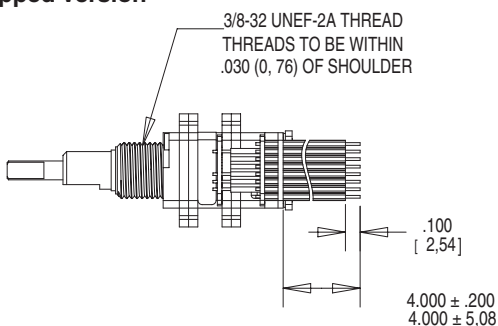
Cable Version



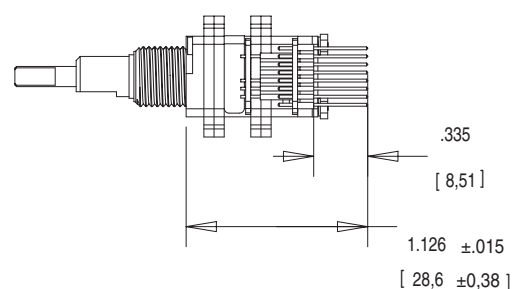
Suggested Mounting Panel Cutout



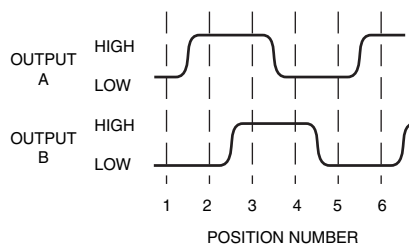
Stripped Version



Pin Version



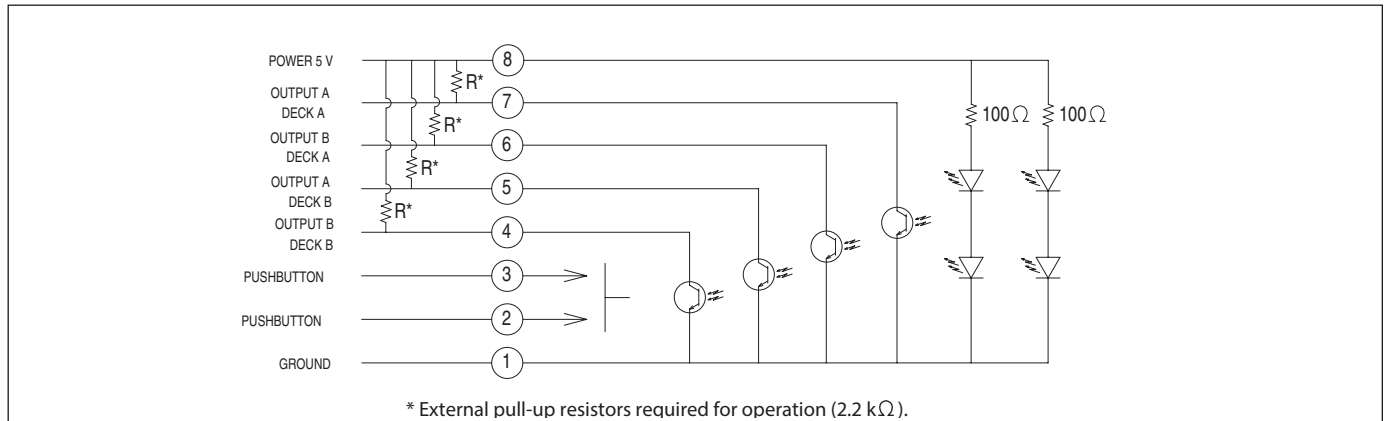
WAVEFORM AND TRUTH TABLE



Clockwise Rotation		
Position	Output A	Output B
1		
2	●	
3	●	●
4		●

- Indicates logic high; blank indicates logic low. Code repeats every 4 positions.

CIRCUITRY

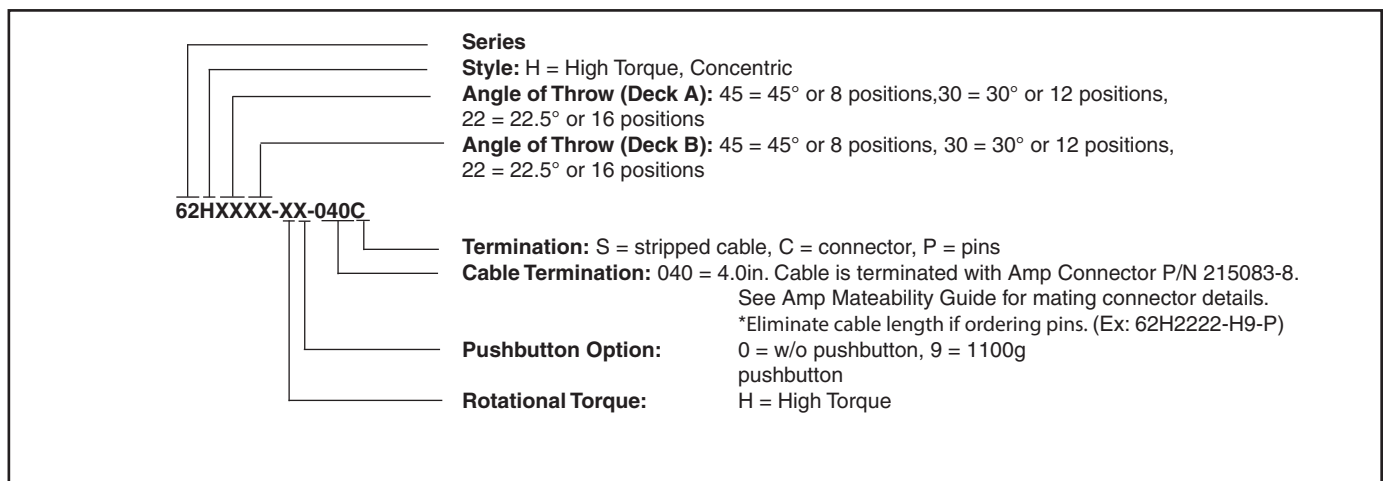


SPECIFICATIONS

Pushbutton Switch Ratings**Rating:** at 5 Vdc, 10 mA, resistive**Contact Resistance:** less than 10 ohms (TTL or CMOS compatible)**Pushbutton Life:** 3 million actuations minimum**Voltage Breakdown:** 250 Vac between mutually insulated parts**Contact Bounce:** less than 4 mS at make**Actuation Force:** 1100 ±300g**Shaft Travel:** .025±.010 inch**Encoder Ratings****Coding:** 2-bit quadrature coded output**Operating Voltage:** 5.0 ±.25 Vdc**Supply Current:** 50 mA maximum @ 5.0 Vdc**Logic Output Characteristics:****Logic High:** 3.0 Vdc minimum**Logic Low:** 1.0 Vdc maximum**Mechanical Life:** 1,000,000 cycles minimum (One cycle is a rotation through all positions and a full return)**Minimum Sink Current:** 2.0 mA for 5 Vdc**Power Consumption:** 150mW maximum**Output:** open collector phototransistor**Logic Rise and Fall Times:** less than 30 mS maximum**Operating Torque:** 5.0 in-oz +/- 1.5 in-oz initial**Shaft Push Out Force:** 45 lbs minimum**Mounting Torque:** 15 in-lbs maximum**Terminal Strength:** 15 lbs cable pull-out force minimum**Operating Speed:** 100 RPM maximum**Environmental Ratings****Operating Temperature Range:** -40°C to 85°C**Storage Temperature Range:** -55°C to 100°C**Vibration Resistance:** Harmonic motion with amplitude of 15G, within a varied 10 to 2000 Hz frequency for 12 hours**Mechanical Shock:** Test 1: 100G, 6 mS, half sine, 12.3 ft/s; Test 2: 100G, 6 mS, sawtooth, 9.7 ft/s**Relative Humidity:** 90–95% at 40°C for 96 hours**Materials and Finishes****Shafts:** Stainless steel**Bushing:** Zinc casting**Mounting Hardware:** One brass, nickel-plated nut and zinc-plated spring steel with clear trivalent chromate finish lockwasher supplied with each switch. (Nut is 0.094 inches thick by 0.433 inches across flats)**Flex Cable:** 28 AWG, stranded/top coated wire, PVC coated on .050 or .100" centers (cabled version)**Header Pins:** Brass, tin-plated

This product series is ROHS Compliant.

ORDERING INFORMATION



Mouser Electronics

Authorized Distributor

Click to View Pricing, Inventory, Delivery & Lifecycle Information:

Grayhill:

[62HR22-H9-020C](#) [62H2222-H9-055C](#) [62H3030-H9-060S](#) [62H2222-H0-070C](#) [62HR22-H9-020S](#) [62H4530-H0-060S](#)
[62H2222-H0-020C](#) [62H2222-H9-020C](#) [62H4545-H9-120S](#) [62H4545-H9-020C](#) [62H2222-H0-035C](#) [62H2222-H0-](#)
[050C](#) [62H2222-H0-020S](#) [62H4522-H9-020C](#) [62H2222-H0-060S](#) [62H2222-H9-050C](#) [62H3030-H9-020C](#) [62H3030-](#)
[H0-080S](#) [62HR22-H0-020C](#) [62H2222-H9-030C](#) [62HR22-H0-P](#) [62HR45-H0-020C](#) [62H2222-H0-060C](#) [62H2222-H9-](#)
[050S](#) [62H3030-H9-050C](#) [62H2222-H9-025C](#)