



## Non-Washable Tactile Switches

### SERIES 95C

6mm Square, Non-washable

#### FEATURES

- Excellent Tactile Feedback
- Thru-hole, Gull Wings, and Right Angle Versions
- Surface Mount Versions Compatible with SMT Assembly Including Infrared and Vapor Phase
- Ultraminiature and Lightweight Structure Suitable for High Density Mounting

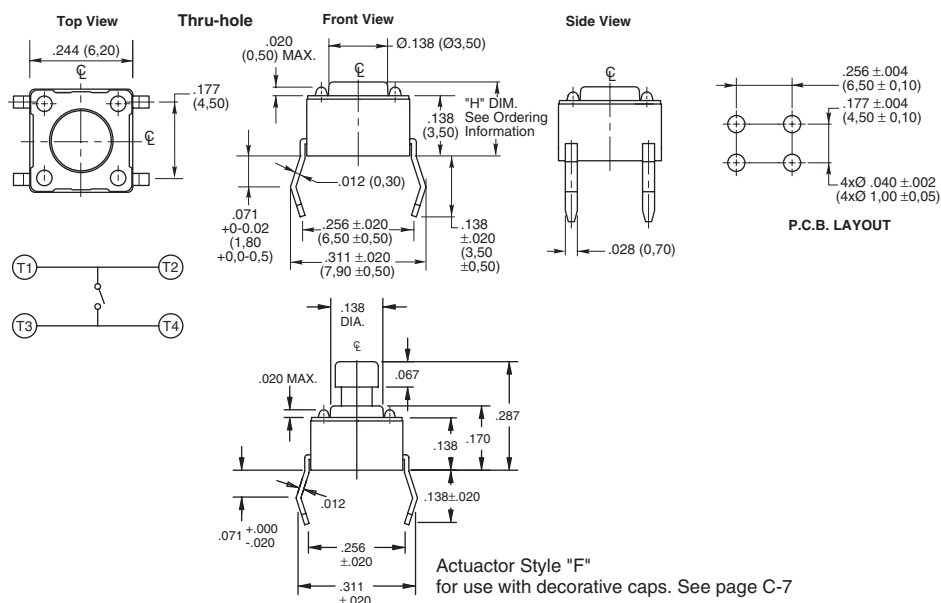
#### APPLICATIONS

Used in applications such as consumer electronics, audio equipment, PCs, VCRs, cable boxes, modems, communications equipment, controls, security and alarm equipment, and test and measurement equipment.

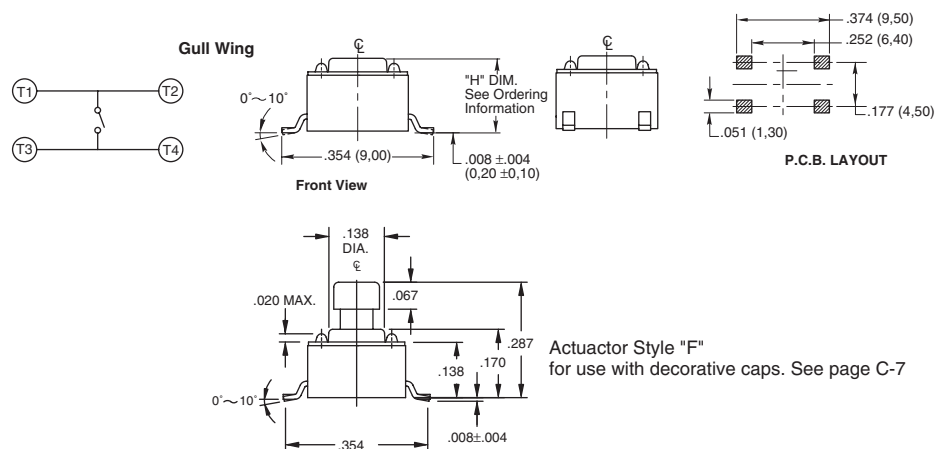
#### DIMENSIONS: Non-Washable Switches in inches (and millimeters)



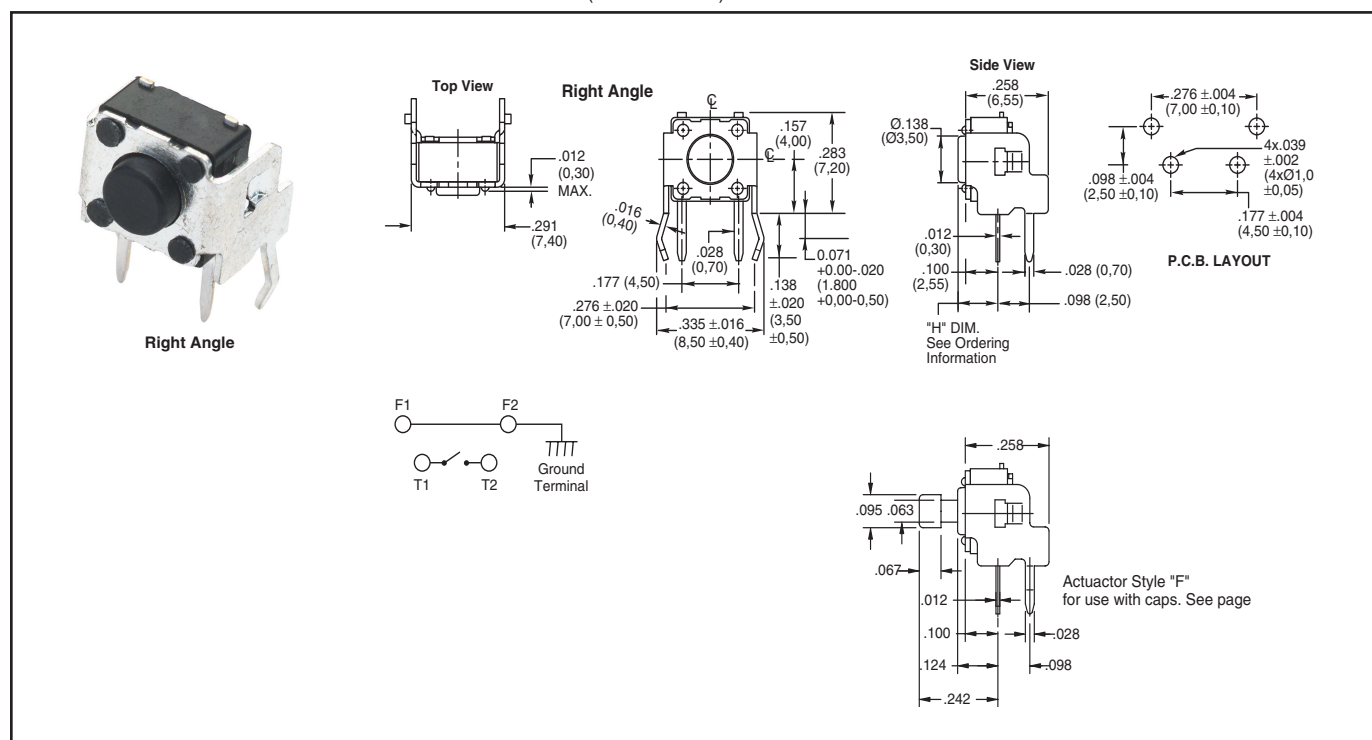
Thru-Hole



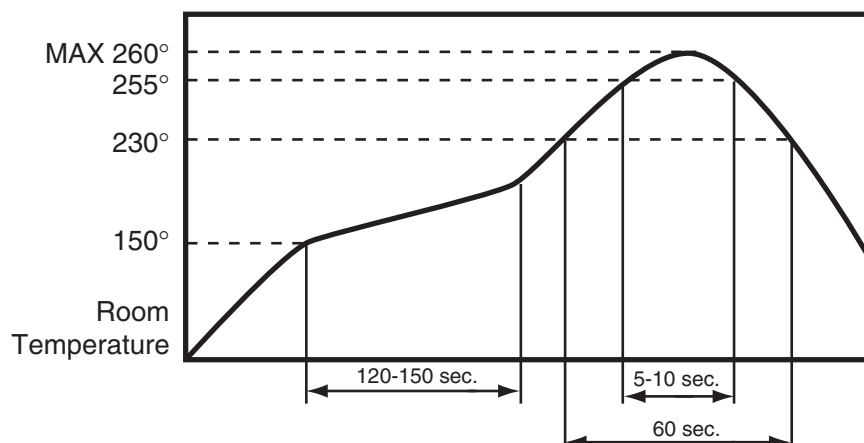
Gull Wing



## DIMENSIONS: Non-Washable Switches in inches (and millimeters)



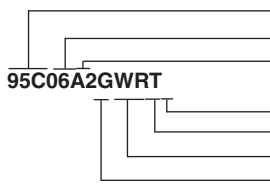
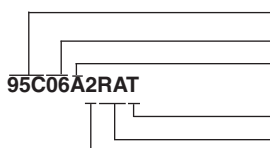
## REFLOW TEMPERATURE PROFILE:





## Non-Washable Tactile Switches

### ORDERING INFORMATION: Non-Washable Switches

|   |  |
|---|--|
| <p><b>Thru-Hole and Gull Wing</b></p>  <p><b>95C06A2GWRT</b></p> | <p><b>Series</b><br/> <b>Size:</b> 06 = 6mm Square<br/> <b>Height ("H"):</b> A = .169 (4,29), B = .197 (5,00), C = .276 (7,01), D = .374 (9,50), E = .512 (13,00)<br/> F = .287 (7,29) for use with decorative caps<br/> <b>RoHS compliant</b><br/> <b>Packaging:</b> Blank = Tube or bulk, R = Tape and Reel (see pkg note)<br/> <b>Terminal Style:</b> Blank = Thru-hole, GW = Gull Wing<br/> <b>Operating Force (Actuator Color):</b> 2 = 100g (Black), 3 = 160g (Brown), 4 = 260g (Red),<br/> 5 = 320g (Orange), 6 = 520g (Yellow)</p> |
| <p><b>Right Angle</b></p>  <p><b>95C06A2RAT</b></p>              | <p><b>Series</b><br/> <b>Size:</b> 06 = 6mm Square<br/> <b>Height ("H"):</b> A = .124 (3,14), B = .152 (3,86), C = .230 (5,84), D = .329 (8,36), E = .467 (11,86)<br/> F = .242 (6,15) for use with decorative caps<br/> <b>RoHS compliant</b><br/> <b>Terminal Style:</b> RA = Right Angle<br/> <b>Operating Force (Actuator Color):</b> 2 = 100g (Black), 3 = 160g (Brown), 4 = 260g (Red)</p>   |

**Packaging** Thru-Hole: Bulk, 1000 pcs/bag. Surface Mount: 77 pcs/tube, 1000 pcs/reel (.169" height), 900 pcs/reel (.197" height), 500 pcs/reel (.276" and .287" height), 380 pcs/reel (.374" height). Right Angle: Bulk, 1000 pcs/bag.

### SPECIFICATIONS:

#### Non-Washable Switches

##### Materials

**Base:** UL94V-0 Nylon thermoplastic

**Cover:** Stainless steel, tin-plated steel

**Actuator:** UL94V-0 Nylon thermoplastic

**Terminal:** Brass with silver-plating

**Contact:** Stainless steel with silver-plating

**Cap:** Thermoplastic ABS

##### Electrical

**Rating:** 50mA, 12 Vdc

**Life:** 100g, 160g: 1,000,000 cycles;

260g: 500,000 cycles

320g, 520g, 300,000 cycles

**Actuator Travel:** .010" + .008"/ - .004"

**Contact Resistance:** 100 mΩ max.

**Insulation Resistance:** 100 MΩ min.  
at 500Vdc

**Dielectric Strength:** No dielectric breakdown after 250V for one minute

**Contact Arrangement:** single pole, single throw

##### Environmental

**Operating Temp. Range:** -25 to 70°C

**Storage Temp. Range:** -30 to 80°C

**Mechanical Shock:** MIL-STD-202F, Method 213B, Test Condition A. Gravity: 50G's (peak value), 11 msec. Direction and times: 6 sides and 3 times in each direction. High reliability.

**Vibration:** MIL-STD-202F, Method 201A. Passed 6 hours (2 hours in each) of three perpendicular planes at a cycle of 10-55-10Hz/minute. High reliability.

##### Soldering Process

**Hand Soldering:** Use a soldering iron of 30 watts, controlled at 350°C for 5 seconds maximum while applying solder.

**Reflow Soldering** (surface mount versions only): Peak temperature 260°C (500°F).

**Wave Soldering:** 260°C (500°F) maximum for 5 seconds subject to PCB .063 in. (1,6mm) thickness.

**Available from your local Grayhill Component Distributor.**

For prices and discounts, contact a local Sales Office, an authorized local distributor, or Grayhill.

### DECORATIVE CAPS (for use with "F" style square actuators)

6mm SQUARE

figure 1

6mm ROUND

figure 2

| PART NUMBER | SWITCH SIZE | SHAPE  | COLOR   | FIGURE |
|-------------|-------------|--------|---------|--------|
| 95CAP-000   | 6mm         | SQUARE | YELLOW  | 1      |
| 95CAP-001   | 6mm         | SQUARE | BLUE    | 1      |
| 95CAP-002   | 6mm         | SQUARE | RED     | 1      |
| 95CAP-003   | 6mm         | SQUARE | NATURAL | 1      |
| 95CAP-004   | 6mm         | SQUARE | BLACK   | 1      |
| 95CAP-005   | 6mm         | SQUARE | GREEN   | 1      |
| 95CAP-006   | 6mm         | SQUARE | ORANGE  | 1      |
| 95CAP-010   | 6mm         | ROUND  | YELLOW  | 2      |
| 95CAP-011   | 6mm         | ROUND  | BLUE    | 2      |
| 95CAP-012   | 6mm         | ROUND  | RED     | 2      |
| 95CAP-013   | 6mm         | ROUND  | NATURAL | 2      |
| 95CAP-014   | 6mm         | ROUND  | BLACK   | 2      |
| 95CAP-015   | 6mm         | ROUND  | GREEN   | 2      |
| 95CAP-016   | 6mm         | ROUND  | ORANGE  | 2      |

# Mouser Electronics

Authorized Distributor

Click to View Pricing, Inventory, Delivery & Lifecycle Information:

Grayhill:

[95CAP-014](#) [95CAP-002](#) [95CAP-004](#) [95C06A4LT](#) [95CAP-015](#) [95CAP-000](#) [95CAP-011](#) [95CAP-012](#) [95CAP-010](#)  
[95CAP-001](#) [95CAP-005](#) [95CAP-013](#)