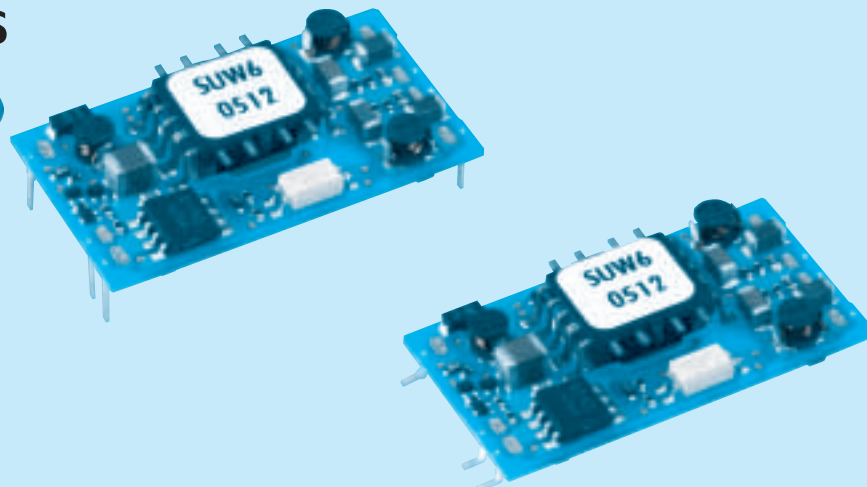


SU W 6 12 12 B P - ☐

① ② ③ ④ ⑤ ⑥ ⑦ ⑧



RoHS



- ① Series name  
 ② Dual output  
 ③ Output wattage  
 ④ Input voltage  
 ⑤ Output voltage  
 ⑥ Mounting type  
   B : SMD  
   C : DIP  
 ⑦ Packing form  
   Blank: Plastic cover  
   P : Tray (SMD type)  
 ⑧ Optional  
   G : Capacitor between  
     Input and Output is  
     removed.

MODEL		SUW60512	SUW60515	SUW61212	SUW61215	SUW62412	SUW62415	SUW64812	SUW64815
MAX OUTPUT WATTAGE[W]		6	6	6	6	6	6	6	6
DC OUTPUT	VOLTAGE[V] ※1	± 12 or +24	± 15 or +30	± 12 or +24	± 15 or +30	± 12 or +24	± 15 or +30	± 12 or +24	± 15 or +30
	CURRENT[A]	0.25	0.2	0.25	0.2	0.25	0.2	0.25	0.2

## SPECIFICATIONS

	MODEL	SUW60512	SUW60515	SUW61212	SUW61215	SUW62412	SUW62415	SUW64812	SUW64815
INPUT	VOLTAGE[V]	DC4.5 - 9		DC9 - 18		DC18 - 36		DC36 - 76	
	CURRENT[A] *2	1.538typ	1.538typ	0.588typ	0.588typ	0.291typ	0.291typ	0.145typ	0.145typ
	EFFICIENCY[%] *2	78typ	78typ	85typ	85typ	86typ	86typ	86typ	86typ
OUTPUT	VOLTAGE[V]	± 12(+24)	± 15(+30)	± 12(+24)	± 15(+30)	± 12(+24)	± 15(+30)	± 12(+24)	± 15(+30)
	CURRENT[A]	0.25	0.2	0.25	0.2	0.25	0.2	0.25	0.2
	LINE REGULATION[mV]	60max	75max	60max	75max	60max	75max	60max	75max
	LOAD REGULATION[mV]	600max	750max	600max	750max	600max	750max	600max	750max
	RIPPLE[mVp-p]	-20 to +55°C *3	120max	120max	120max	120max	120max	120max	120max
		-40 to -20°C *3	150max	150max	150max	150max	150max	150max	150max
	RIPPLE NOISE[mVp-p]	-20 to +55°C *3	150max	150max	150max	150max	150max	150max	150max
		-40 to -20°C *3	200max	200max	200max	200max	200max	200max	200max
	TEMPERATURE REGULATION[mV]	-20 to +55°C	150max	180max	150max	180max	150max	180max	180max
		-40 to +55°C	240max	290max	240max	290max	240max	290max	290max
PROTECTION CIRCUIT AND OTHERS	DRIFT[mV] *4	50max	60max	50max	60max	50max	60max	50max	60max
	START-UP TIME[ms]	20max (Minimum input, Io=100%)							
	OUTPUT VOLTAGE ADJUSTMENT RANGE	Fixed (TRM pin open) ±5% adjustable by external VR							
	OUTPUT VOLTAGE SETTING[V] (±5%)	11.40 - 12.60	14.25 - 15.75	11.40 - 12.60	14.25 - 15.75	11.40 - 12.60	14.25 - 15.75	11.40 - 12.60	14.25 - 15.75
	OVERCURRENT PROTECTION	Works over 105% of rating and recovers automatically							
ISOLATION	REMOTE ON/OFF	Provided (Negative logic L : ON, H : OFF)							
	INPUT-OUTPUT	AC500V 1minute, Cutoff current = 10mA, DC500V 50MΩ min (20±15°C)							
ENVIRONMENT	OPERATING TEMP., HUMID. AND ALTITUDE	-40 to +85°C, 20 - 95%RH (Non condensing) (Required Derating), 3,000m (10,000feet) max							
	STORAGE TEMP., HUMID. AND ALTITUDE	-40 to +100°C, 20 - 95%RH (Non condensing), 9,000m (30,000feet) max							
	VIBRATION	10 - 55Hz, 98.0m/s <sup>2</sup> (10G), 3minutes period, 60minutes each along X, Y and Z axis							
	IMPACT	490.3m/s <sup>2</sup> (50G), 11ms, once each along X, Y and Z axis							
SAFETY	AGENCY APPROVALS	UL60950-1, C-UL, EN60950-1							
OTHERS	CASE SIZE/WEIGHT	31.6×6.5×18.1mm [1.24×0.26×0.71 inches] (W×H×D) / 4g max							
	COOLING METHOD	Convection/Forced air							

\*1 Output pins can be connected in series to make a 24V/30V output.

\*2 Rated input 5V, 12V, 24V or 48V DC Io=100%

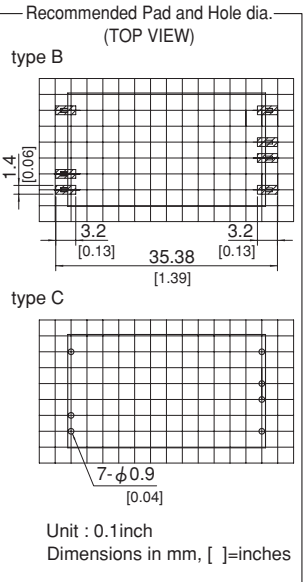
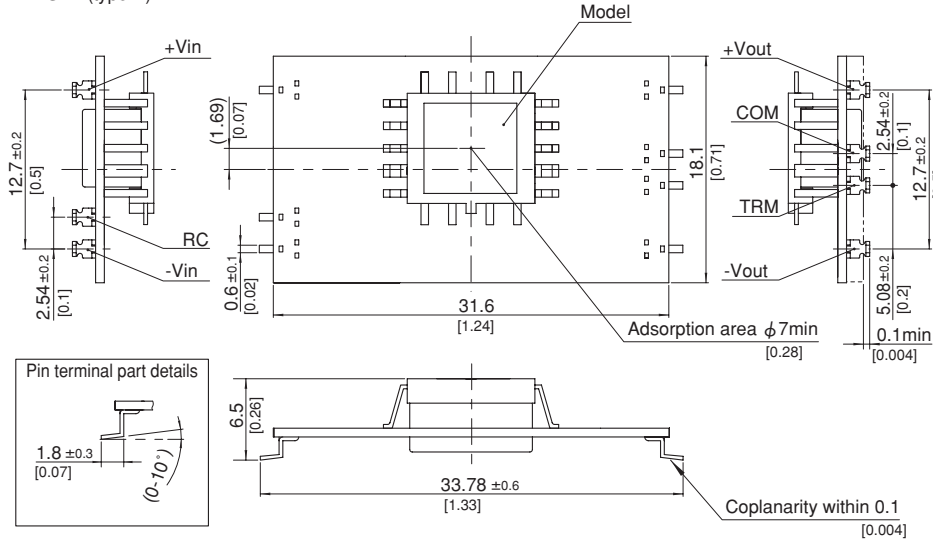
\*3 Ripple and Ripple Noise is measured by using measuring board with capacitor with in 25mm from output pin terminals.

\*4 Drift is the change in DC output for an eight hour period after a half-hour warm-up at 25°C.

\* Parallel operation with other model is not possible.

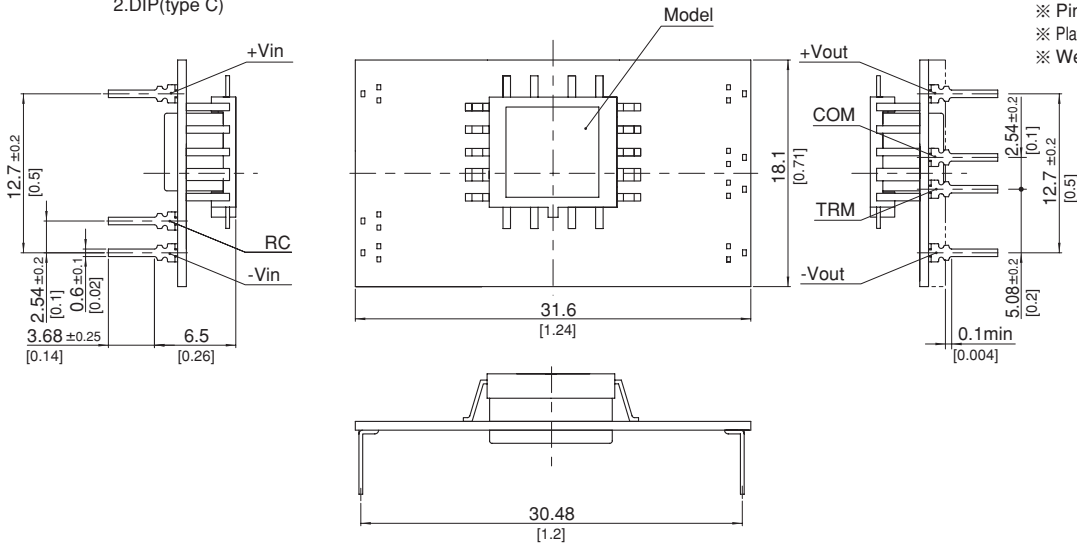
External view

1.SMD(type B)



- ※ Tolerance ±0.5 [±0.02]
- ※ Dimensions in mm, [ ]=inches
- ※ Pin terminal thickness : 0.3±0.1 [0.012]
- ※ Pin terminal material : Copper alloy
- ※ Plating treatment of terminal : Lead free plating
- ※ Weight : 4g max

2.DIP(type C)



# Mouser Electronics

Authorized Distributor

Click to View Pricing, Inventory, Delivery & Lifecycle Information:

Cosel:

[SUW62415B](#) [SUW60512B](#) [SUW64815BP](#) [SUW61215B](#) [SUW62412BP](#) [SUW64812B](#) [SUW62415BP](#) [SUW64815C](#)  
[SUW60512BP](#) [SUW61212C](#) [SUW62415C](#) [SUW61215BP](#) [SUW62412B](#) [SUW64815B](#) [SUW61215C](#) [SUW60512C](#)  
[SUW64812C](#) [SUW61212BP](#) [SUW60515B](#) [SUW61212B](#) [SUW60515C](#) [SUW62412C](#) [SUW60515BP](#) [SUW64812BP](#)