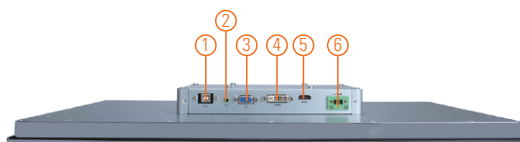
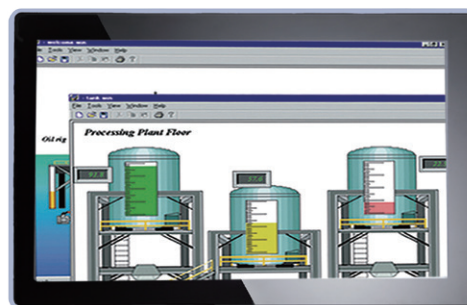
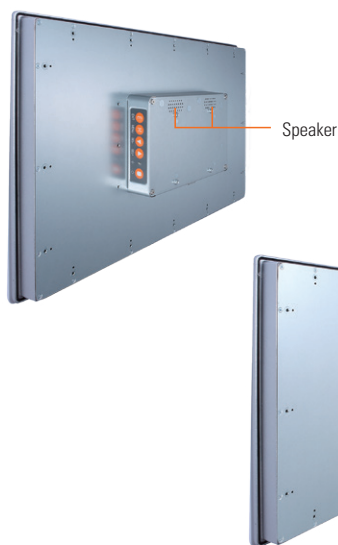


P6217W

21.5" FHD TFT Widescreen Industrial LCD Monitor

Features

- 21.5" FHD TFT 250 nits with projective capacitive multi-touch or resistive touch
- NEMA 4/12 (IP65) compliant flat panel monitor
- Supports panel mount, wall mount and VESA mount
- Full range screw-type (locked) AC-in or 12V/24V DC-in (optional)
- VGA, HDMI and DVI with multi-signal inputs



1. RS232 or USB for touch
2. Audio (Line in)
3. VGA
4. DVI-D
5. HDMI
6. Power input Terminal block or Screw type

Introduction

The P6217W is a slim-type industrial LCD monitor with flat front bezel design, which adopts 21.5-inch 250 nits full HD LCD display and supports multi-signal interfaces including DVI, VGA, S-Video, Video. Featuring IP65 (NEMA 4)-rated front bezel, screw-type adaptor plug design, and 12/24V DC-in, the 21.5-inch P6217W is designed to fit for all kinds of industrial environments. Moreover, the P6217W supports panel mount, wall mount or VESA FPMPI (Video Electronics Standards Association Flat Panel Monitor Physical Mounting Interface) mounting. With the compact mechanism design, the P6217W can be deployed easily in any space-limited place. It is especially suitable for POI/POS, HMI and all kinds of heavy-duty industrial fields.

Specifications

Front Bezel	NEMA 4/12 (IP65)-compliant, flat front bezel
Mounting	Panel mount, wall mount and VESA arm FPMPI mounting (video electronics standards association Flat Panel monitor physical mounting interface)
LCD Panel	Display 21.5" FHD TFT LCD
	Max. Resolution 1920 x 1080
	Max. Colors 16.7 M
	Active Area (mm) 476.64 x 268.11
	Pixel Pitch (mm) 0.24 x 0.24
	Response Time 18 ms
	Backlight LED
	Backlight MTBF 50,000 hrs
	Viewing Angle (H/V) 178°/178°
	Contrast Ratio 3000 (TYP.)
	Brightness (cd/m ²) 250 nits
Display Control	OSD (on screen display)
Display Mode	VGA 640 x 350 (70 Hz), VGA 640 x 480 (60/72/75 Hz), VGA 720 x 400 (70 Hz), SVGA 800 x 600 (60/72/75 Hz), XGA 1024 x 768 (60/72/75 Hz), WXGA 1366 x 768 (60 Hz), FHD 1920 x 1080 (60 Hz)
Input Signal	VGA HDMI DVI (only for DVI-D) Touchscreen: USB interface

Specifications

I/O Connectors	1 x RS-232 or USB for touchscreen version 1 x Audio (Line-in) 1 x VGA 1 x DVI-D 1 x HDMI 1 x DVI 1 x Power input with Terminal block(DC Version) or Screw type connector(AC version)
Audio	2 x Speaker
Power Supply	DC version: 24VDC AC version: 100 - 240VAC-DC, 36W power adapter
Power Consumption	26W
Touchscreen	Projective capacitive multi-touch or 5-wire resistive touch
Dimensions	547.59 mm (21.56") (W) x 339.05 mm (13.34") (D) x 53 mm (2.09") (H)
Packing Dimensions	700 mm (27.56") (W) x 185 mm (7.28") (D) x 510 mm (20.07") (H)
Weight (net/gross)	6.42 kg (14.15 lb)/7.78 kg (17.15 lb)
Operating Temperature	0°C to +45°C (+32°F to +113°F)
Relative Humidity	20% to 90% @ +40°C, non-condensing
Certifications	CE

Packing List

1 x P6217W unit
1 x VGA cable
1 x USB cable (for resistive/capacitive touch screen only)
1 x Audio cable
1 x Adapter (AC Version only)
1 x Power cord (AC Version only)
1 x 3-PIN Terminal block (DC Version only)

Ordering Information

P6217W	
P6217WPC-AC-U-US-EU (P/N: E226217100)	21.5" Industrial Monitor with Capacitive Touch Screen, AC Version
P6217WPG-AC-US-EU (P/N: E226217101)	21.5" Industrial Monitor without Touch Screen, AC Version
P6217WPR-AC-U-US (P/N: E226217105)	21.5" Industrial Monitor with Resistive Touch Screen, AC Version
P6217WPC-24VDC-U (P/N: E226217102)	21.5" Industrial Monitor with Capacitive Touch Screen, 24VDC Version
P6217WPG-24VDC (P/N: E226217103)	21.5" Industrial Monitor without Touch Screen, 24VDC Version
P6217WPR-24VDC-U (P/N: E226217104)	21.5" Industrial Monitor with Resistive Touch Screen, 24VDC Version

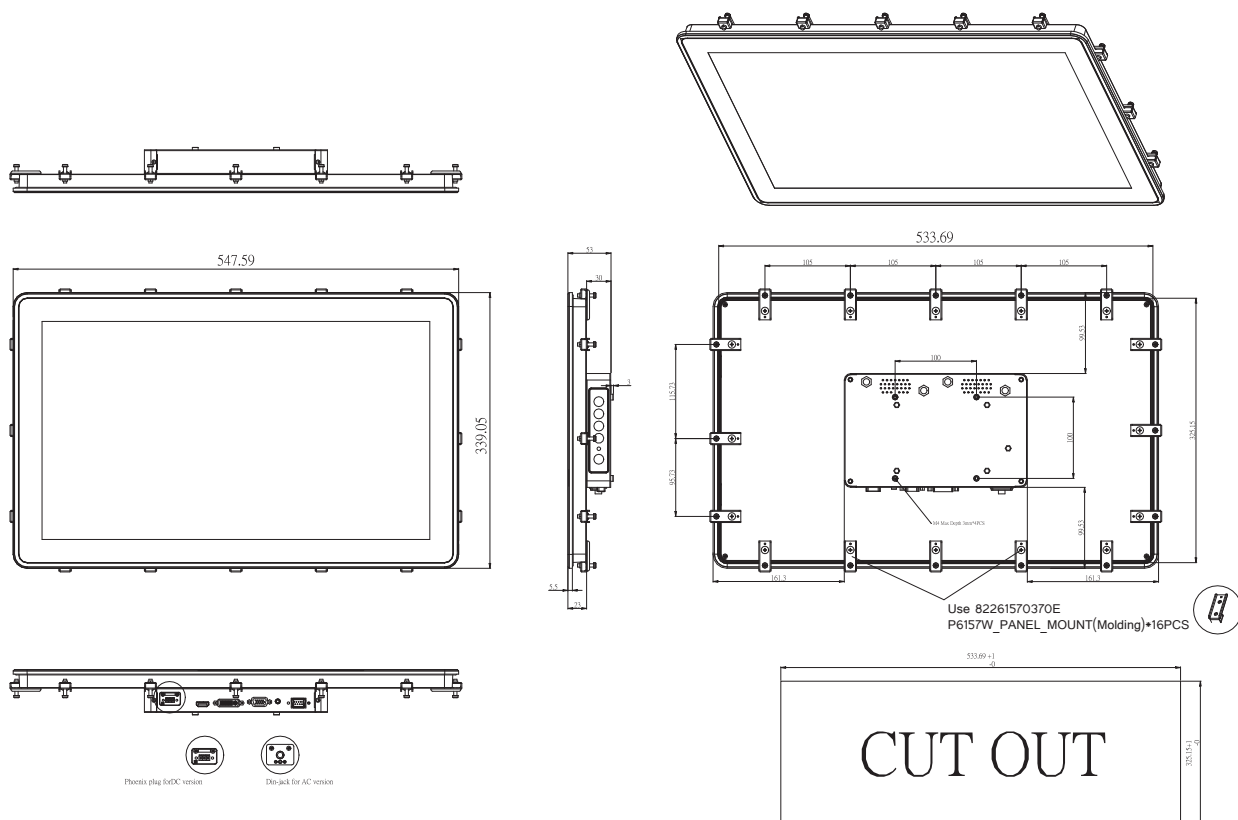
* Other configuration by request

* Specification and certifications may vary based on different requirements

Optional Accessories

5946L203800E	HDMI cable
59461713400E	DVI-D cable
881262170A0E	Panel mount kit
881231770A0E	Wall mount kit
E221177116	Desktop stand for 15.6" to 21.5"

Dimensions



Mouser Electronics

Authorized Distributor

Click to View Pricing, Inventory, Delivery & Lifecycle Information:

[Axiomtek:](#)

[P6217WPC-24VDC-U](#) [P6217WPG-AC-US-EU](#) [P6217WPC-AC-U-US-EU](#) [P6217WPG-24VDC](#)