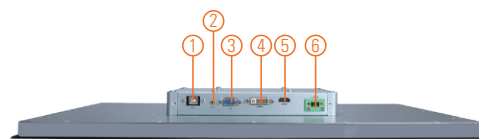
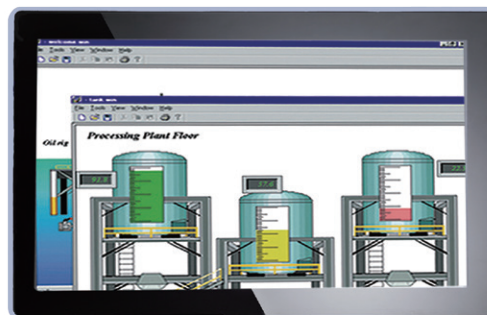
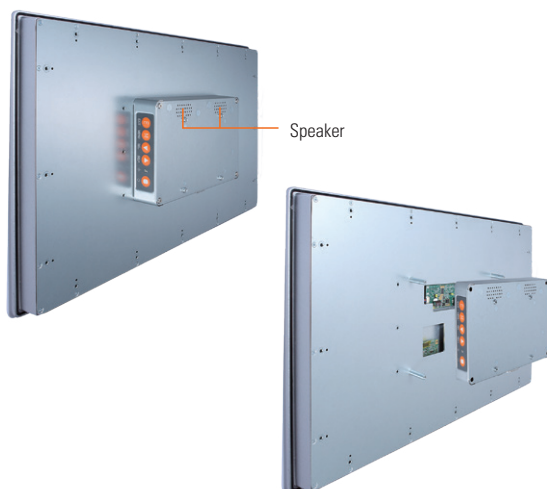


P6187W-V2

18.5" WXGA TFT Widescreen Industrial LCD Monitor

Features

- 18.5" WXGA TFT 450 nits LCD with projected capacitive touch or resistive touch
- NEMA 4/12 (IP65) compliant flat panel monitor
- Supports panel mount, wall mount and VESA mount
- Full range screw-type (locked) AC-in or 24V DC-in (optional)
- VGA, HDMI and DVI with multi-signal inputs



1. USB for touch
2. Audio (Line in)
3. VGA
4. DVI-D
5. HDMI
6. Power input Terminal block or Screw type

Introduction

The P6187W-V2 is a slim-type industrial LCD monitor with flat front bezel design, which adopts 18.5-inch 300 nits full HD LCD display and supports multi-signal interfaces including DVI, VGA and HDMI. Featuring IP65 (NEMA 4)-rated front bezel, screw-type adaptor plug design, and 12/24V DC-in, the 18.5-inch P6187W-V2 is designed to fit for all kinds of industrial environments. Moreover, the P6187W-V2 supports panel mount, wall mount or VESA FPMPI (Video Electronics Standards Association Flat Panel Monitor Physical Mounting Interface) mounting. With the compact mechanism design, the P6187W-V2 can be deployed easily in any space-limited place. It is especially suitable for POI/POS, HMI and all kinds of heavy-duty industrial fields.

Specifications

| | | |
|-----------------|--|--------------------|
| Front Bezel | NEMA 4/12 (IP65)-compliant, flat front bezel | |
| Mounting | Panel mount, wall mount and VESA arm FPMPI mounting (video electronics standards association Flat Panel monitor physical mounting interface) | |
| LCD Panel | Display | 18.5" WXGA TFT LCD |
| | Max. Resolution | 1366 x 768 |
| | Max. Colors | 16.7 M |
| | Active Area (mm) | 409.8 x 230.4 |
| | Pixel Pitch (mm) | 0.3 x 0.3 |
| | Response Time | 5 ms |
| | Backlight | LED |
| | Backlight MTBF | 50,000 hrs |
| | Viewing Angle (H/V) | 170°/160° |
| Display Control | Contrast Ratio | 1000 (TYP.) |
| | Brightness (cd/m ²) | 450 nits |
| Display Control | OSD (on screen display) | |
| Display Mode | VGA 640 x 350 (70 Hz), VGA 640 x 480 (60/72/75 Hz), VGA 720 x 400 (70 Hz), SVGA 800 x 600 (60/72/75 Hz), XGA 1024 x 768 (60/72/75 Hz), WXGA 1366 x 768 (60 Hz) | |
| Input Signal | VGA | |
| | HDMI | |
| | DVI (only for DVI-D) | |
| | Touchscreen: USB interface | |

Specifications

| | |
|-----------------------|--|
| I/O Connectors | 1 x RS-232 or USB for touchscreen version 1 x Audio (Line-in) 1 x VGA 1 x DVI-D 1 x HDMI 1 x DVI 1 x Power input with Terminal block(DC Version) or Screw type connector(AC version) |
| Audio | 2 x Speaker |
| Power Adapter | Screw-type external AC/DC power adapter |
| Power Consumption | 16W |
| Touchscreen | Projected capacitive multi-touch 5-wire flat resistive touch |
| Dimensions | 460 mm(18.11") (W) x 285 mm (11.22") (D) x 58.45 mm (2.30") (H) |
| Packing Dimensions | 575 mm (22.63") (W) x 170 mm (6.69") (D) x 460 mm (18.11") (H) |
| Weight (net/gross) | 4.83 kg (10.63 lb)/6.33 kg (13.93 lb) |
| Operating Temperature | 0°C to +50°C (+32°F to +122°F) |
| Relative Humidity | 20% to 90% @ +40°C, non-condensing |
| Certifications | CE |

Packing List

- 1 x P6187W-V2 unit
- 1 x VGA cable
- 1 x USB cable (for resistive touch/capacitive touch version only)
- 1 x Audio cable
- 1 x Adapter (AC version only)
- 1 x Power cord (AC version only)
- 1 x 3-pin Terminal block (DC version only)

Ordering Information

P6187W-V2

| | |
|---|--|
| P6187WPC-AC-U-US-EU-V2 (P/N: E226187104) | 18.5" Industrial Monitor with Capacitive Touch Screen, AC Version |
| P6187WPC-24VDC-U-V2 (P/N: E226187106) | 18.5" Industrial Monitor with Capacitive Touch Screen, 24VDC Version |
| P6187WPG-24VDC-V2 (P/N: E226187107) | 18.5" Industrial Monitor without touch, 24VDC Version |
| P6187WPR-AC-U-US-EU-V2 (P/N: E226187110) | 18.5" Industrial Monitor with Resistive Touch Screen, AC Version |
| P6187WPR-24VDC-U-V2 (P/N: E226187109) | 18.5" Industrial Monitor with Resistive Touch Screen, 24VDC Version |

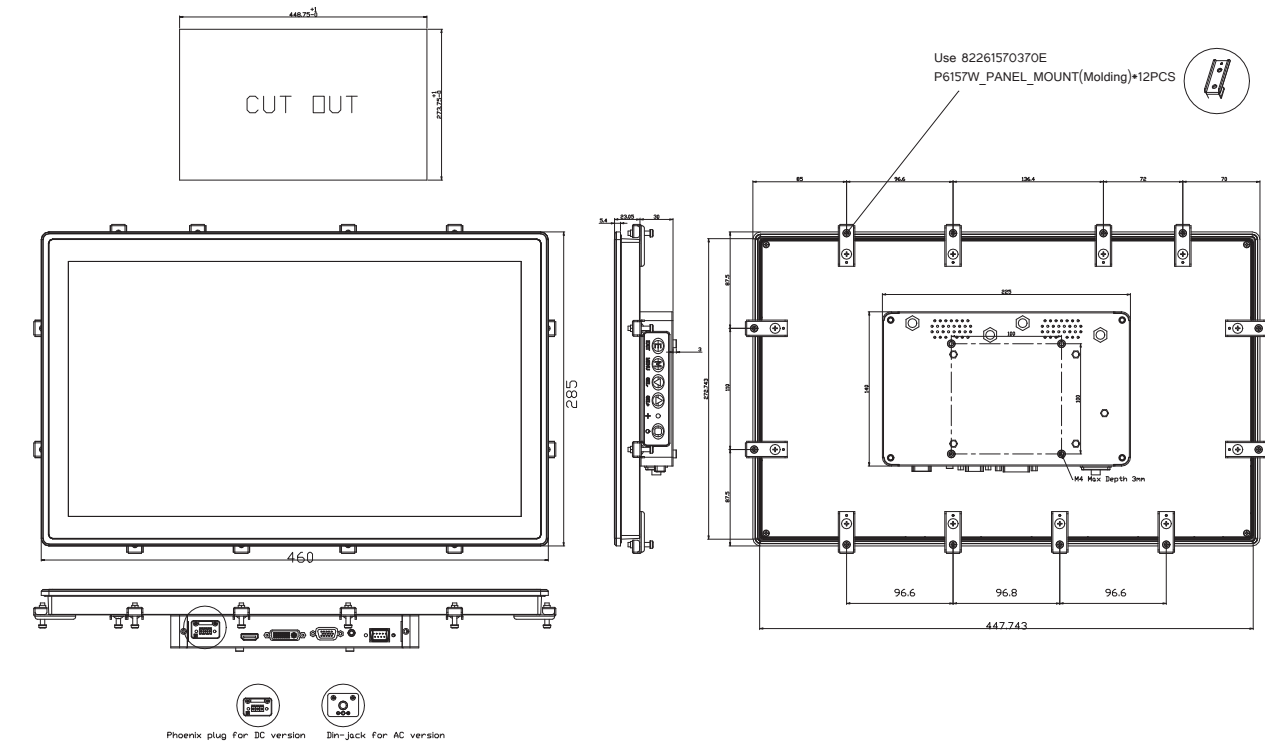
* Other configuration by request

* Specification and certifications may vary based on different requirements

Optional Accessories

| | |
|--------------|----------------------------------|
| 5946L203800E | HDMI cable |
| 59461713400E | DVI-D cable |
| 881261870A0E | Panel mount kit |
| 881231770A0E | Wall mount kit |
| E221177116 | Desktop stand for 15.6" to 21.5" |

Dimensions



Mouser Electronics

Authorized Distributor

Click to View Pricing, Inventory, Delivery & Lifecycle Information:

[Axiomtek:](#)

[P6187WPG-AC-US-EU-V2](#) [P6187WPG-24VDC](#) [P6187WPG-24VDC-V2](#) [P6187WPC-AC-U](#) [P6187WPG-AC](#)
[P6187WPC-24VDC-U-V2](#) [P6187WPC-AC-U-US-EU-V2](#)