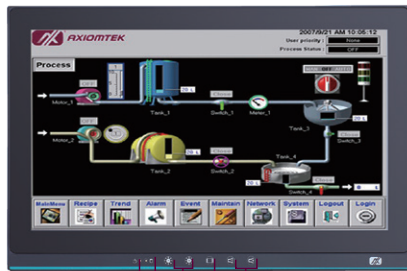
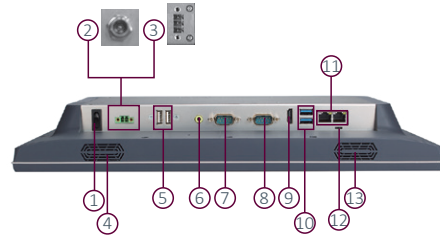


GOT5153W-845

15.6" WXGA TFT Fanless Touch Panel Computer with Intel® Celeron® Processor N3060



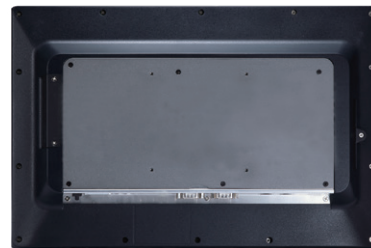
1. Power LED
2. HDD LED
3. Brightness adjust +/-
4. Display on/off
5. Volume control



1. Power switch (ATX)
2. Power input connector (screw)
3. Power input connector (phoenix)
4. Speakers
5. 2 x USB 2.0
6. 1 x Line-out
7. 1 x RS-232/422/485
8. 1 x RS-232
9. 1 x HDMI
10. 2 x USB 3.0
11. 2 x LAN
12. AT/ATX selectable switch
13. Speaker



▲ Side view



▲ Rear view



Fanless



Low Power



DDR3L



AiRD



IP65



Dual-View

Features

- 15.6" WXGA wide screen TFT LCD display with LED backlight
- Projected capacitive touch or 5-wire flat resistive touch
- Fanless design with Intel® Celeron® processor N3060
- 2.5" SATA HDD or mSATA
- 2 GbE LANs, 4 USB, 2 COM, and speakers
- IP65-rated front bezel and IPX1 full enclosure
- Supports wall mount, VESA arm, and desktop stand
- Supports RFID (optional)

Introduction

The GOT5153W-845 adopts a modern, sleek and fanless design and is equipped with the Intel® Celeron® processor N3060 up to 2.48 GHz. For wireless network connection, the GOT5153W-845 offers two PCI Express Mini Card slots. By just plugging in a WLAN card, customers can have instant access to wireless LAN/GPRS/GSM/4G environments.

Slim & Lightweight Design

The GOT5153W-845 is slim and lightweight which make it fit for limited space installation.

Built-in Internal WLAN Antenna

The GOT5153W-845 provides two PCI Express Mini Card slots and a built-in WLAN antenna for wireless network connections. By simply plugging in the wireless LAN card, customers can use the GOT5153W-845 in wireless LAN/GPRS/GPS/4G environment.

Support Front Membrane Keys (optional)

The GOT5153W-845 has 5 membrane keys on the front panel which allows users to adjust the LCD on/off, LCD brightness and volume setting easily.

Specifications

Front Bezel	IP65, NEMA 4 rugged protection, plastic front bezel	
LCD Panel	Display Type	15.6" WXGA TFT LCD with LED backlight
	Brightness (cd/m ²)	300 nits
	Resolution	1366 x 768
Main System	CPU	Intel® Celeron® processor N3060 2 cores (up to 2.48 GHz)
	System Memory	1 x 204-pin DDR3L-1600 SO-DIMM, up to 8GB
	BIOS	AMI UEFI BIOS
	Storage	1 x 2.5" SATA HDD (9.5 mm height) (AC version only) 1 x mSATA
	Watchdog Timer	255 levels, 0 to 255 sec.
	Onboard Graphics	Integrated Intel® HD GFX
I/O Connector	1 x RS-232/422/485 (default RS-232) 1 x RS-232 1 x AT/ATX mode selection switch 1 x Switch for power on/off 2 x USB 2.0 2 x USB 3.0 1 x HDMI 1 x Audio (Line-out) 2 x 10/100/1000 Mbps Ethernet (Intel® I210-AT)	
TPM	N/A	
Expansion Interface	1 x full-size PCI Express Mini Card slot with mSATA 1 x full-size PCI Express Mini Card slot with SIM	
Touchscreen	Projected capacitive multi-touch 5-wire flat resistive touch	
Power Supply	AC version: 100 to 240 V AC-DC, 60W power adapter	
Power Consumption	46.8W	
Dimensions (W x D x H)	394.2 x 57 x 257.2 mm (15.53" x 2.25" x 10.13")	
Packing Dimensions (W x D x H)	508 x 106 x 383 mm (20" x 4.17" x 15.08")	
Weight (net/gross)	3.0 kg (6.61 lb)/4.5 kg (9.92 lb)	
Operating Temperature	0°C to +50°C (+32°F to +122°F) with W.T. DRAM/SSD	
Relative Humidity	20% to 90% @ 40°C; non-condensing	
Operation Vibration	2G, 5 to 500Hz, random for CFast™	
Certifications	CE, FCC, and UL60950-1	

* W.T.: Wide Temperature. All W.T. supported products have to be sorted by Axiomtek.

Ordering Information

Standard

GOT5153W-845-PCT-J (P/N: E225153116)	15.6" WXGA fanless touch panel computer with Intel® Celeron® processor N3060, projected capacitive multi-touch screen, and AC-DC 60W power adapter (screw type connector)
GOT5153W-845-FR-J (P/N: E225153114)	15.6" WXGA fanless touch panel computer with Intel® Celeron® processor N3060, 5-wire flat resistive touch screen, and AC-DC 60W power adapter (screw type connector)

* Other configuration by request

* Specification and certifications may vary based on different requirements



1 x GOT5153W-845
1 x Adapter (AC version only)
1 x Power cord (AC version only)

Wi-Fi + Bluetooth kit	
RFID kit	
E29R131114	Wall mount kit
E226171119	Stand kit

WES7
WE8S (64-bit)
Windows® 10 IoT Enterprise 64-bit

Windows® 7
Windows® 8.1 (64-bit)
Windows® 10

Technical drawing of the TP-A/A monitor, showing front, side, and rear views with dimensions in millimeters (mm).

Front View:

- Width: 394.2
- Height: 257
- Model label: TP-A/A

Side View:

- Depth: 57 (21.38)
- Mounting bracket depth: 29.8 (29.84)

Rear View:

- Mounting bracket depth: 29.8
- Internal dimensions: 100 (width), 100 (height)
- Mounting holes: M4 Max Deep 3.0mm

Mouser Electronics

Authorized Distributor

Click to View Pricing, Inventory, Delivery & Lifecycle Information:

[Axiomtek:](#)

[GOT5153W-845-PCT-DC](#) [GOT5153W-845-PCT-J-US](#) [GOT5153W-845-FR-J-US](#) [GOT5153W-845-FR-DC](#)
[GOT5153W-845 FR-J-US](#) [GOT5153W-845 PCT-J-US](#)