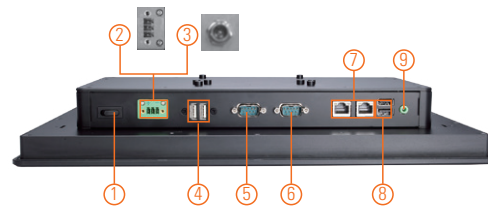
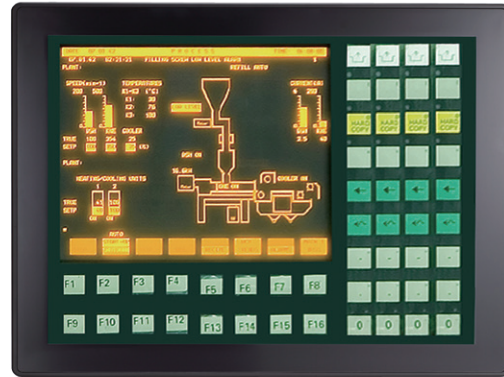
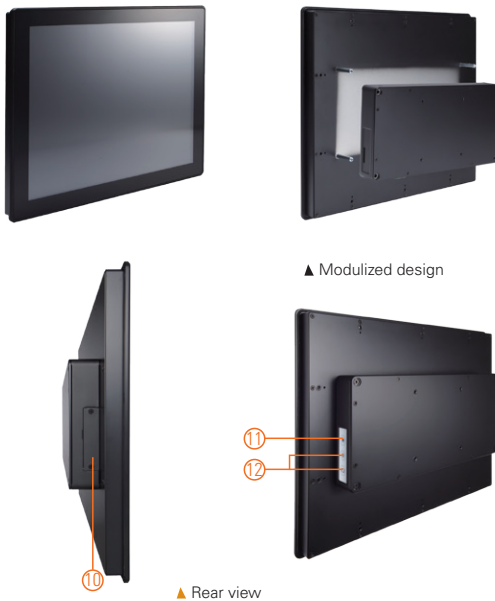


GOT3177T-834

17" SXGA TFT Flat Bezel Touch Panel Computer with Intel® Celeron® Processor J1900 (-10°C to +50°C)

Features

- 17" SXGA TFT flat resistive touch
- Fanless and modularized design
- Intel® Bay Trail-D Celeron® processor J1900
- 2.5" 7/9.5 mm SATA HDD & CFast™ or mSATA
- WLAN/3G module & antenna (optional)
- 2 GbE LAN, 2 USB 2.0, 2 USB 3.0 and 2 COM
- IP65 front bezel
- Supports panel mount and optional VESA arm/desktop stand/wall mount
- -10°C to +50°C wide operating temperature range



1. Power switch
2. Terminal block for DC power input or
3. Screw conn. w/ AC power adapter
4. USB 2.0 x 2
5. COM 1 (RS-232/422/485)
6. COM 2 (RS-232/422/485)
7. Ethernet x 2
8. USB 3.0 x 2
9. Audio (Line-out)
10. CFast™ slot
11. Backlight switch
12. Brightness adjustment



Introduction

The GOT3177T-834 adopts a 17-inch SXGA LCD and supports Intel® Bay Trail-D processor. By supporting a wide range operating temperature from -10°C to +50°C, it can be used in harsh environment. The rugged industrial panel PC supports low power Intel® Celeron® processor J1900. It also provides 2 PCI Express Mini Card slots for 3G, wireless network connectivity. The 17" flat front bezel touch panel computer is suitable for transportation, heavy-duty industry, smart factory automation, and oil pipe monitoring systems.

Wide Temperature Range Support

The Intel® Bay Trail-based GOT3177T-834 applies unique extended temperature technology with wide temperature range support as well as fanless operation. It also has a compact design for harsh environment.

WLAN Antenna Support (optional)

The 17" SXGA IP65 industrial panel PC, GOT3177T-834, provides 2 PCI Express Mini Card slots and WLAN/3G antennas for wireless network connectivity.

Specifications

Front Bezel	IP65 front bezel	
LCD Panel	Display Type	17" SXGA TFT LCD
	Brightness (cd/m ²)	350 nits
	Resolution	1280 x 1024
Main System	CPU	Intel® Bay Trail-D Celeron® processor J1900 4C@2.0GHz
	Chipset	SoC Integrated
	System Memory	1 x 204-pin DDR3L-1333/1600 SO-DIMM, up to 8GB
	BIOS	AMI UEFI BIOS
	Storage	1 x 2.5" 7/9.5 mm SATA HDD 1 x CFast™ or 1 x mSATA
	Watchdog Timer	255 levels, 0 ~ 255 sec.
	Onboard Graphics	Integrated Intel® HD Graphics

Specifications

I/O Connector	2 x RS-232/422/485 (default RS-232) 1 x audio (Line-out) 2 x USB 2.0 2 x USB 3.0 2 x 10/100/1000Mbps Ethernet (Intel® i210IT)
Expansion Interface	1 x full-size PCI Express Mini Card slot (with SIM) 1 x full-size PCI Express Mini Card slot with mSATA (optional)
Touchscreen	Flat resistive touch
Power Supply	1. DC version: 9 ~ 36 VDC 2. AC version: 12 VDC with adapter
Power Consumption	50 W
Dimensions	398.02 mm (15.64") (W) x 59.9 mm (2.36") (D) x 330.44 mm (13.01") (H)
Packing Dimensions	510 mm (20.08") (W) x 190 mm (7.48") (D) x 540 mm (21.26") (H)
Weight (net/gross)	4.8 kg (10.6 lb)/7.1 kg (15.67 lb)
Environment	Operating temperature: -10°C ~ +50°C (+14°F ~ +122°F) Relative humidity: 20% ~ 90% @ +40°C; non-condensing Operation vibration: 2G, 10 ~ 500Hz, random for CFast™
Certificate	CE

Ordering Information

GOT3177T-834-FR-DC	17" SXGA TFT fanless touch panel computer with Intel® Celeron® J1900 2.0GHz quad core processor, 5-wire flat resistive touch screen and 9 ~ 36 VDC terminal block connector
GOT3177T-834-FR-J	17" SXGA TFT fanless touch panel computer with Intel® Celeron® J1900 2.0GHz quad core processor, 5-wire flat resistive touch screen and AC-DC 12 VDC power adapter (screw type connector)

Optional Accessories

82231770050E	GOT3177T-834 wall mount kit
50906D24000E	Adaptor 24V/120W, wire only, FSP120-AAAN3

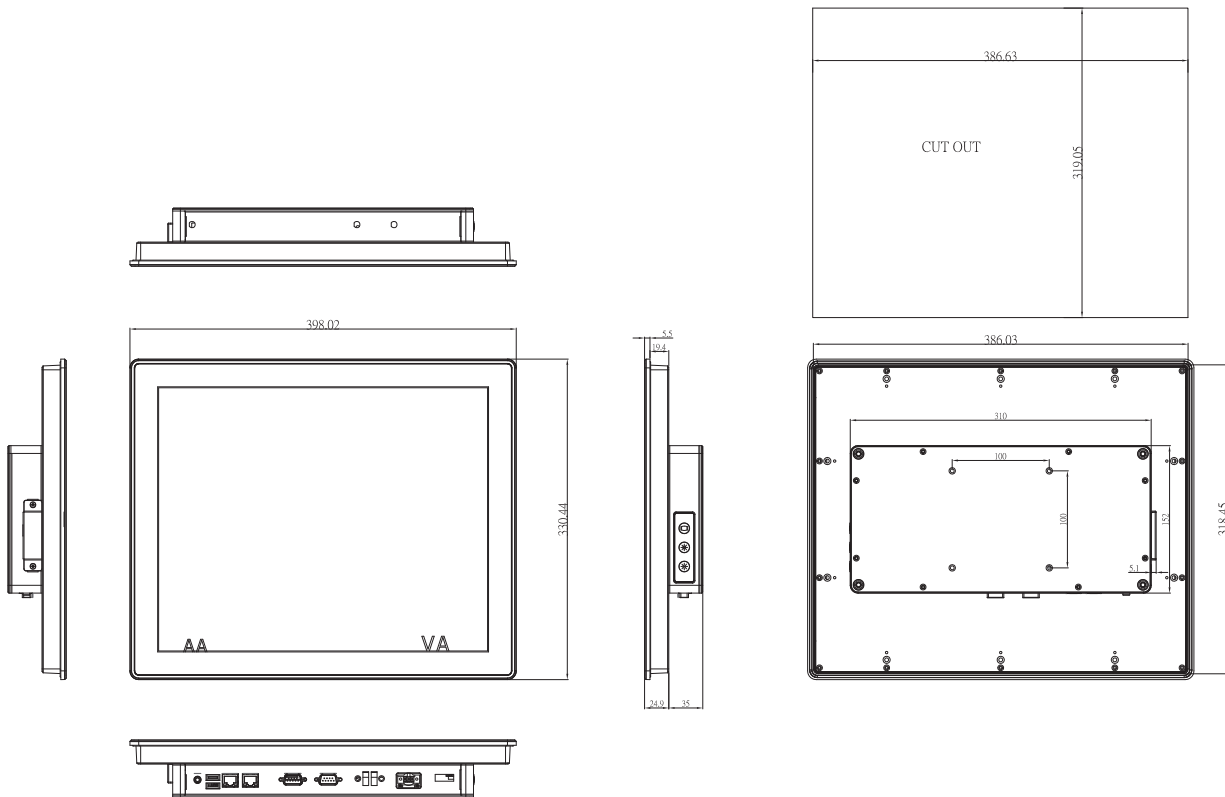
Optional EOS Installation

WES 7
WE8S

Optional OS Installation

Windows® 8.1
Windows® 7

Dimensions



Mouser Electronics

Authorized Distributor

Click to View Pricing, Inventory, Delivery & Lifecycle Information:

[Axiomtek:](#)

[GOT3177T-834-FR-DC](#) [GOT3177T-834-FR-J](#) [GOT3177T-834-FR-J-US](#)