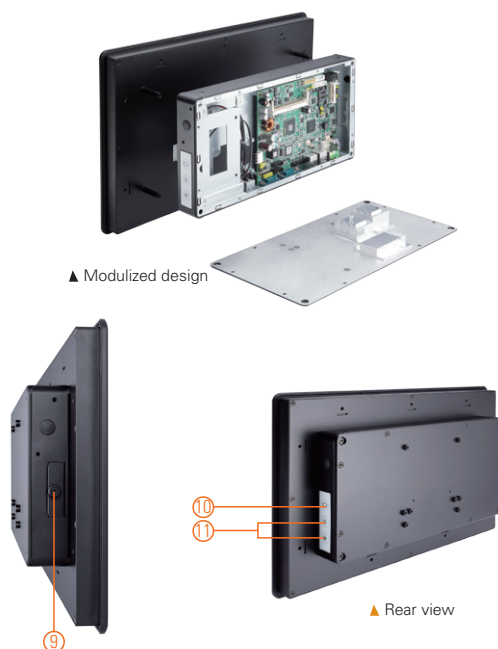


GOT3157W-834-PCT

15.6" WXGA TFT Fanless Multi-touch Panel Computer with Intel® Celeron® Processor J1900 (-20°C to +50°C)

Features

- 15.6" WXGA TFT with projected capacitive multi-touch
- Fanless design with Intel® Celeron® processor J1900 4C @ 2.0 GHz (Bay Trail)
- 2.5" SATA HDD & CFast™ or mSATA
- WLAN/3G module & antenna (optional)
- 2 GbE LAN, 2 USB 2.0, 2 USB 3.0 and 2 COM
- IP65 front bezel
- Supports panel mount and optional VESA arm/desktop stand/wall mount
- -20°C to +50°C wide operating temperature range
- Adjust RS-232/422/485 setting via BIOS



1. Power switch
2. Terminal block for DC power input
3. USB 2.0 x 2
4. COM 1 (RS-232/422/485)
5. COM 2 (RS-232/422/485)
6. Ethernet x 2
7. USB 3.0 x 2
8. Audio (Line-out)
9. CFast™ slot
10. Backlight switch
11. Brightness adjustment



Introduction

The GOT3157W-834-PCT adopts a 15.6-inch WXGA LCD and supports Intel® Bay Trail-D processor. By supporting a wide range operating temperature from -20°C to +50°C, it can be used in harsh environment. The rugged industrial panel PC supports low power Intel® Celeron® processor J1900. It also provides two PCI Express Mini Card slots for 3G, wireless network connectivity. This 15.6" multi-touch panel computer is suitable for transportation, heavy-duty industry, smart factory automation, and oil pipe monitoring systems.

Wide Temperature Range

The Intel® Bay Trail-based GOT3157W-834-PCT applies unique extended temperature technology with wide temperature range support as well as fanless operation. It also has a compact design for harsh environment.

WLAN Antenna Supported (optional)

The 15.6" WXGA IP65 industrial panel PC, GOT3157W-834-PCT, provides two PCI Express Mini Card slots and WLAN antennas for 3G and wireless network connectivity.

Specifications

Front Bezel	IP65 front bezel	
LCD Panel	Display Type	15.6" WXGA TFT LCD
	Brightness (cd/m ²)	400 nits
	Resolution	1366 x 768
Main System	CPU	Intel® Bay Trail-D Celeron® processor J1900 4C @ 2.0 GHz
	Chipset	SoC Integrated
	System Memory	1 x 204-pin DDR3L-1333/1600 SO-DIMM, up to 8GB
	BIOS	AMI UEFI BIOS
	Storage	1 x 2.5" SATA HDD 1 x CFast™ or 1 x mSATA
	Watchdog Timer	255 levels, 0 to 255 sec.
	Onboard Graphics	Integrated Intel® HD Graphics

Specifications

I/O Connector	2 x RS-232/422/485 (COM 1/2) 1 x switch for power on/off (ATX) 1 x audio (Line-out) 2 x USB 3.0 2 x USB 2.0 2 x 10/100/1000 Mbps Ethernet (Intel® i210-IT)
TPM	N/A
Expansion Interface	2 x PCI Express Mini Card slot
Touchscreen	Projected Capacitive multi-touch
Power Supply	1. DC version: 9 to 36 VDC 2. AC version: 12 VDC with adapter
Power Consumption	45 W
Dimensions	396 mm (15.6") (W) x 53.9 mm (2.12") (D) x 247.1 mm (9.73") (H)
Packing Dimensions	525 mm (20.67") (W) x 470 mm (18.51") (D) x 186 mm (7.32") (H)
Weight (net/gross)	5.0 kg (11.02 lb)/7.0 kg (15.43 lb)
Environment	Operating temperature: -20°C to +50°C (-4°F to +122°F) Relative humidity: 20% to 90% @ +40°C; non-condensing Operation vibration: 2G, 10 to 500Hz, random for CompactFlash™
Certificate	CE

Packing List

1 x GOT3157W-834-PCT
1 x Adapter(GOT3157W-834-PCT-J)
1 x Phoenix connector(GOT3157W-834-PCT-DC 9 ~ 36 VDC)
1 x Panel mount kit

Ordering Information

GOT3157W-834-PCT-J	15.6" WXGA TFT fanless touch panel computer with Intel® Celeron® J1900 2.0 GHz quad core processor, projected capacitive multi-touch screen and AC-DC 12 VDC power adapter (screw type connector)
GOT3157W-834-PCT-DC	15.6" WXGA TFT fanless touch panel computer with Intel® Celeron® J1900 2.0 GHz quad core processor, projected capacitive multi-touch screen and 9 to 36 VDC terminal block connector

Optional Accessories

Wi-Fi	
4G	
82231770050E	GOT3177T-834 wall mount kit
50906D24000E	Adaptor 24V/120W, wire only, FSP120-AAAN3 (for DC model)

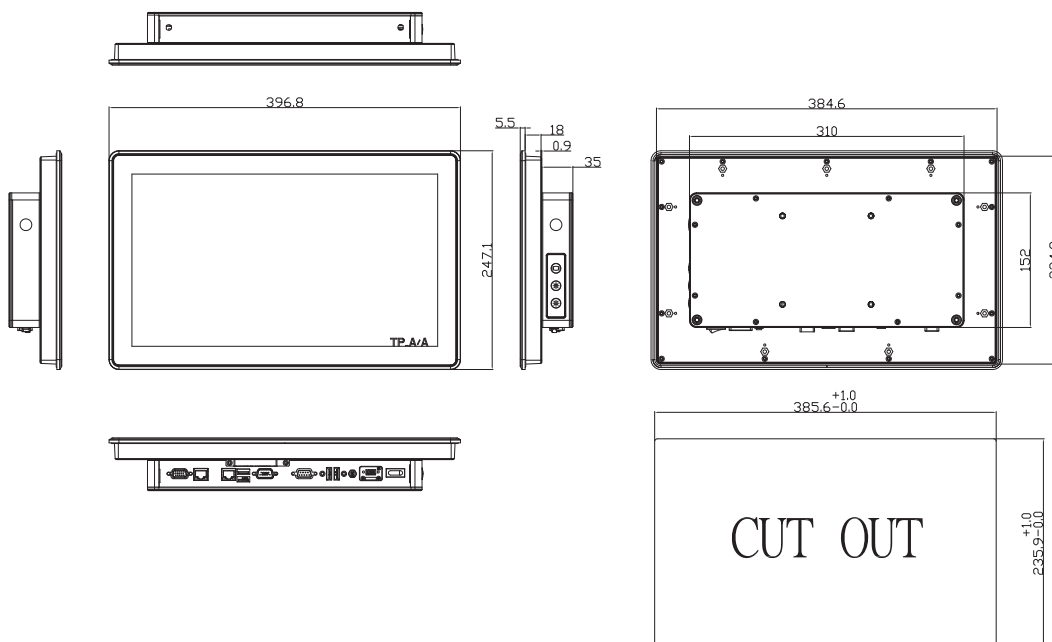
Optional EOS Installation

WES7
WE8S
Windows® 10 IoT Enterprise

Optional OS Installation

Windows® 8.1
Windows® 7
Windows® 10

Dimensions



Mouser Electronics

Authorized Distributor

Click to View Pricing, Inventory, Delivery & Lifecycle Information:

[Axiomtek:](#)

[GOT3157W-834-PCT-DC](#) [GOT3157W-834-PCT-J-US](#)