

PLUG: PA 10 S JTB  
RECEPTACLE: PA 10 P J  
XX XX X XXX

PLUG		RECEPTACLE		XX	XX	X	X
SERIES							
PA	Power connectors	PA	Power connectors				
SIZE							
10	10 #12 contacts	10	10 #12 contacts				
CONTACTS							
TYPE CONTACTS/TERMINATIONS:		TYPE CONTACTS/TERMINATIONS:					
P	Pin, straight, solder cup	S	Socket, straight, solder cup				
PD11	Pin, straight, dip solder, .172" x .062" dia	SD11	Socket, straight, dip solder, .172" x .062"				
PR7	Pin, right angle, dip solder, .109" x .082" dia						
PR8	Pin, right angle, dip solder, .125" x .082" dia						
HARDWARE							
SY	Guide set	SY	Guide set				
J	Fixed jackset	J	Fixed jackset				
JT	Turning jackset, 1.054" (straight plug only)	JT	Turning jackset, 1.054"				
JTB	Hex turning jackset, .314" (straight plug only)	JTB	Hex turning jackset, .314"				
JTL	Long turning jackset, 1.175"	JTL	Long turning jackset, 1.175"				
OPTIONS							

- Option Codes: Add to the end of the part number. Example: PA10PD11SY-P39. Call factory for additional codes.
- D01 Pretinned contact terminations (except solder cups, wire wraps® and flex contacts) with 63/37 or 60/40 solder. ☒
- P39 Pretinned contact terminations (except solder cups, wire wraps® and flex contacts) with SAC305 solder (lead free).

☒ = Option not RoHS compliant

#### NOTES:

Molded bodies: Polyphenylene sulfide

Contact rating: #12 contacts = 23 amps

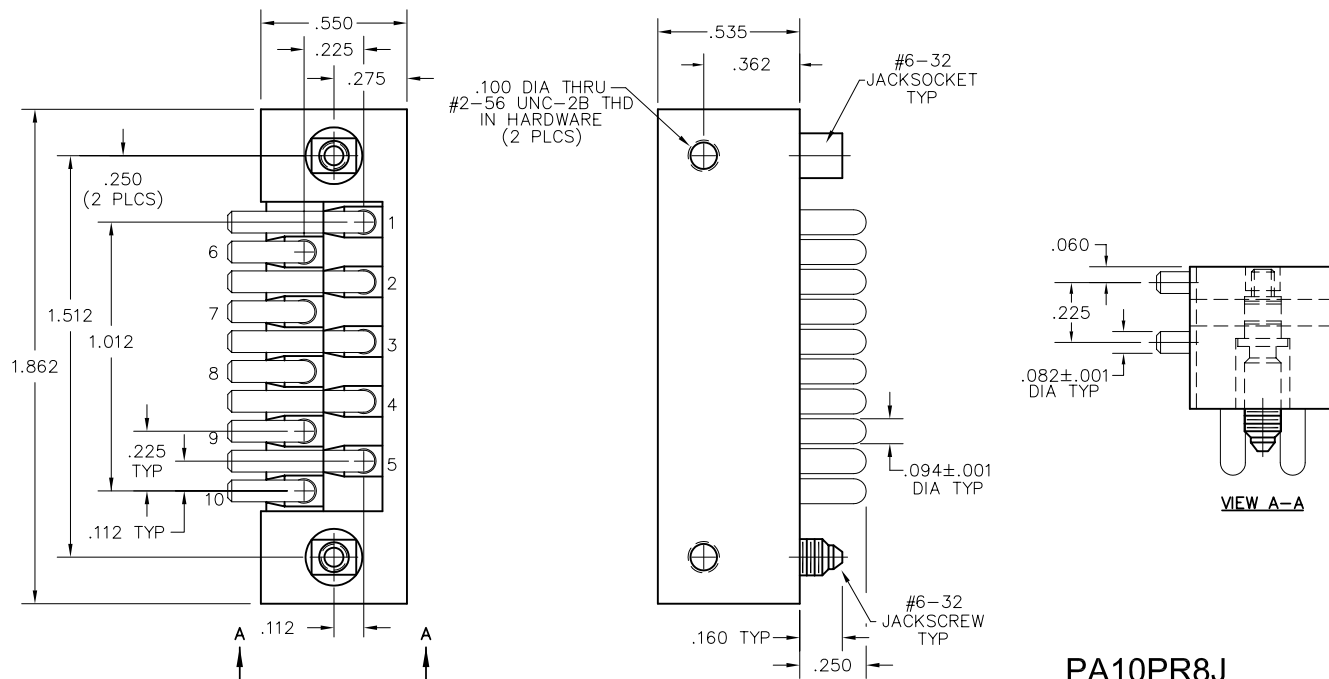
Contact material: Socket - Beryllium copper, gold plated  
Pin - Brass gold plated

Contact plating: Nominal Au plating thickness is 20 microinches on mating surfaces

Test voltage: 2000 VRMS @ sea level; 460 VRMS @ 70,000 feet

Contact resistance: .023 volt maximum drop @ 23 amps (.001 ohm)

Engagement force: 24 ounces maximum average per contact



# Mouser Electronics

Authorized Distributor

Click to View Pricing, Inventory, Delivery & Lifecycle Information:

[AirBorn:](#)

[PA10PD11J](#) [PA10PR8J](#) [PA10SJTB](#) [PA10PJ](#) [PA10SD11JTB](#) [PA10SSY](#) [PA10SD11SY](#) [PA10PSY](#) [PA10PD11SY](#)  
[PA10PR8SY](#) [PA10PJTL](#)