

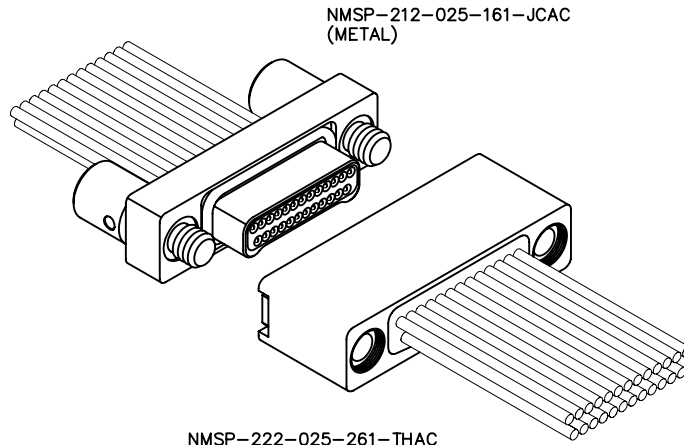


# 2 · ROW Splashproof\*\* Cable to Cable

.025"

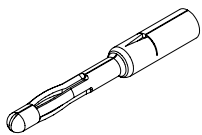
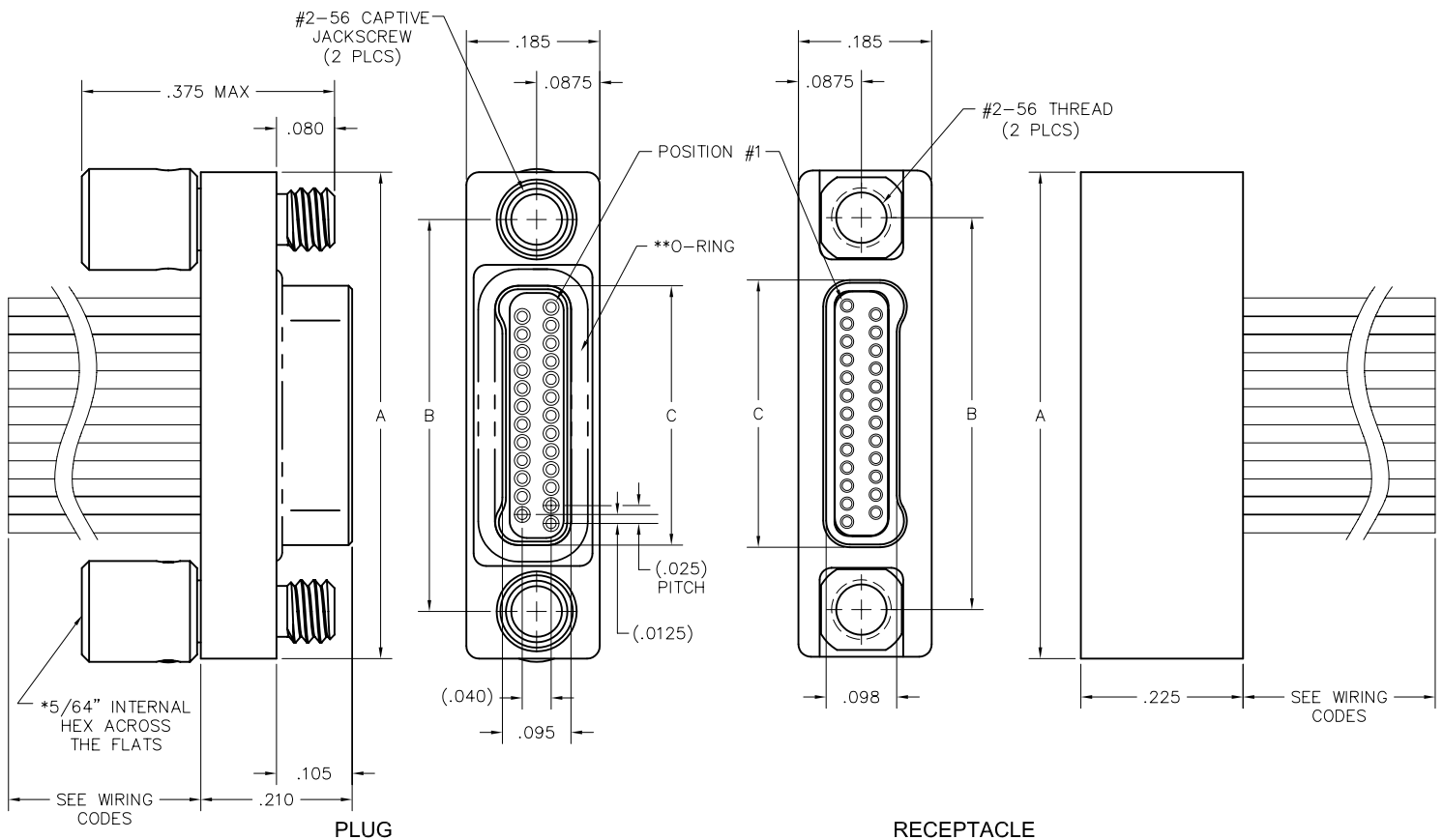
**NMSP, NMSP**

9 thru 85 Contacts



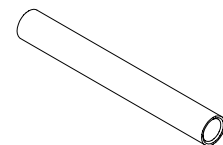
NMSP-212-025-161-JCAC  
(METAL)

NMSP-222-025-261-THAC  
(METAL)



PIN CONTACT  
3 TINE SPRING MEMBER, CRIMP

SIZE	A	B	DIMENSIONS		HARDWARE
			PLUG	RCPT	
9	.475	.344	.160	.163	#2-56 THREAD
15	.550	.419	.235	.238	
21	.625	.494	.310	.313	
25	.675	.544	.360	.363	
31	.750	.619	.435	.438	
37	.825	.694	.510	.513	
51	1.000	.869	.685	.688	
65	1.175	1.044	.860	.863	
69	1.225	1.094	.910	.913	
85	1.425	1.294	1.110	1.113	



SOCKET CONTACT  
DRAWN TUBE, CRIMP

\*\*The o-ring seal provides moisture resistance to fog, humidity and splashing.

# Mouser Electronics

Authorized Distributor

Click to View Pricing, Inventory, Delivery & Lifecycle Information:

[AirBorn:](#)

[NMSP-212-031-161-JCAC](#)