

# 4 • ROW Motherboard or Chassis to Daughterboard

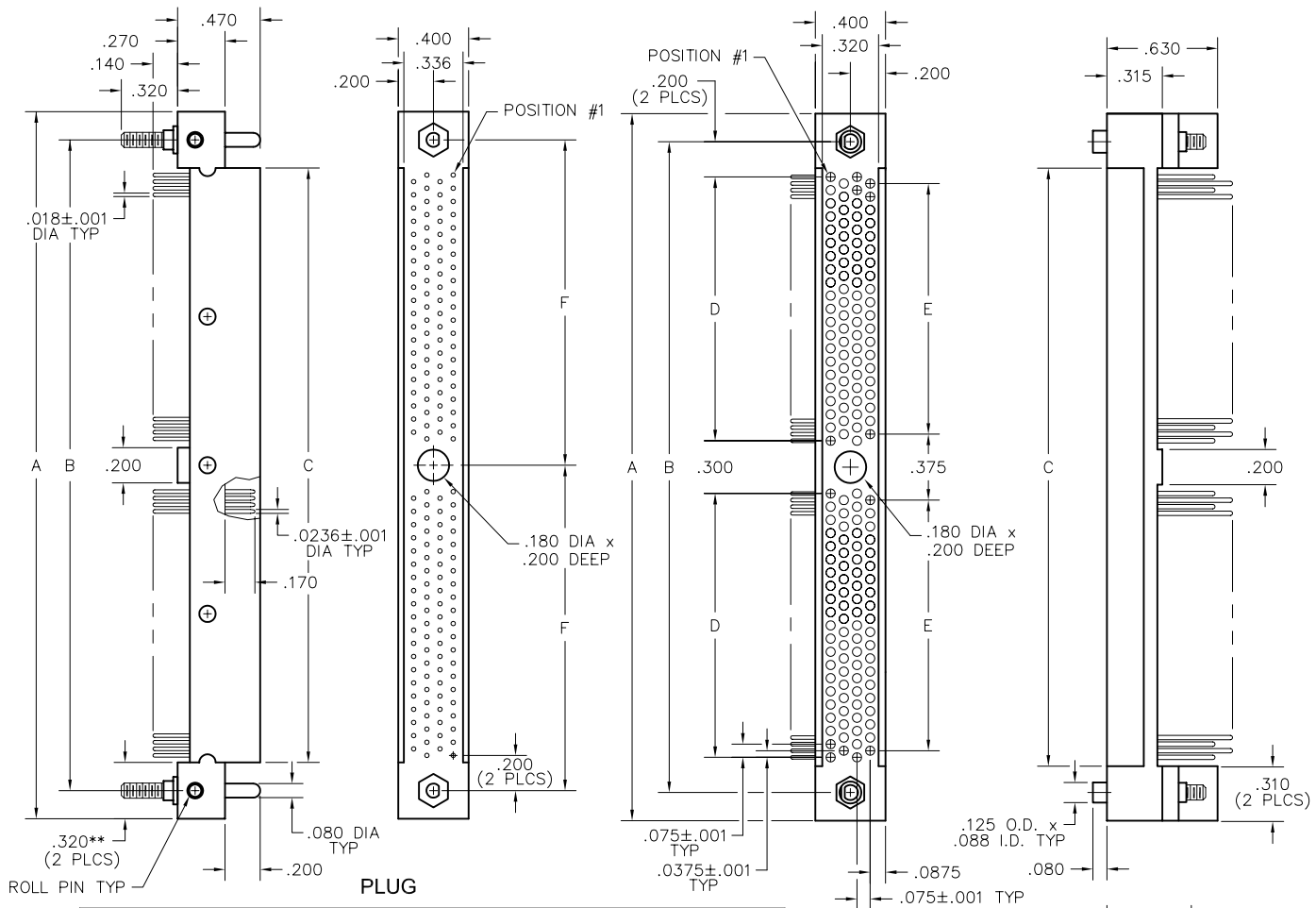
.075"

**RM4**

86 thru 404 Contacts

RM412-164-522-9501

RM462-164-852-9601



SIZE	DIMENSIONS						D	E	F
	PLUG	RCPT	B	PLUG	RCPT				
86*	2.255	2.295	1.975	1.655	1.675	1.575	1.500	—	—
110*	2.745	2.745	2.425	2.105	2.125	2.025	1.950	—	—
164	4.020	4.020	3.700	3.380	3.400	1.500	1.425	1.850	—
196	4.620	4.620	4.300	3.980	4.000	1.800	1.725	2.150	—
204	4.770	4.770	4.450	4.130	4.150	1.875	1.800	2.225	—
220	5.070	5.070	4.750	4.430	4.450	2.025	1.950	2.375	—
250*	5.370	5.370	5.050	4.730	4.750	4.650	4.575	—	—
276	6.120	6.120	5.800	5.480	5.500	2.550	2.475	2.900	—
300	6.570	6.570	6.250	5.930	5.950	2.775	2.700	3.125	—
404	8.520	8.520	8.200	7.880	7.900	3.750	3.675	4.100	—

## NOTES:

- \* = Single section, no center mounting hole
- \*\* = .280" for 86 position

# Mouser Electronics

Authorized Distributor

Click to View Pricing, Inventory, Delivery & Lifecycle Information:

[AirBorn:](#)

[RM412-164-531-9000](#)