

PLUG:	PB	20	S	JTB
RECEPTACLE:	PB	20	P	J
	XX	XX	X	XXX

PLUG

RECEPTACLE

SERIES	
PB	Power connectors

SIZE	
20	20 #12 contacts

CONTACTS	
P	Pin, straight, solder cup
PD11	Pin, straight, dip solder, .172" x .062" dia
PR7	Pin, right angle, dip solder, .109" x .082" dia
PR8	Pin, right angle, dip solder, .125" x .082" dia

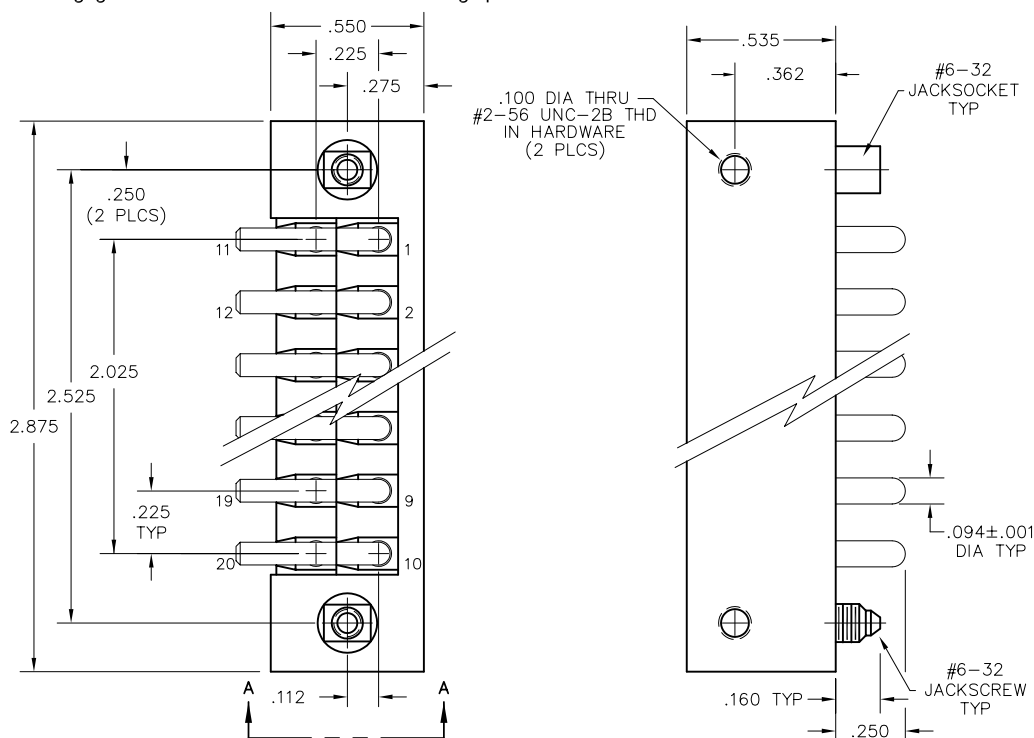
HARDWARE	
SY	Guide set
J	Fixed jackset
JT	Turning jackset, 1.054" (straight plug only)
JTB	Hex turning jackset, .314" (straight plug only)
JTL	Long turning jackset, 1.175"

OPTIONS

- Option Codes: Add to the end of the part number. Example: PA5PD11SY-P39. Call factory for additional codes.
- D01 Pretinned contact terminations (except solder cups, wire wraps® and flex contacts) with 63/37 or 60/40 solder. ☒
- P39 Pretinned contact terminations (except solder cups, wire wraps® and flex contacts) with SAC305 solder (lead free).
- ☒ = Option not RoHS compliant

NOTES:

Molded bodies: Polyphenylene sulfide
 Contact rating: #12 contacts = 23 amps
 Contact material: Socket - Beryllium copper, gold plated
 Pin - Brass gold plated
 Contact plating: Nominal Au plating thickness is 20 microinches on mating surfaces
 Test voltage: 2000 VRMS @ sea level; 460 VRMS @ 70,000 feet
 Contact resistance: .023 volt maximum drop @ 23 amps (.001 ohm)
 Engagement force: 24 ounces maximum average per contact



PB20PR8J

Mouser Electronics

Authorized Distributor

Click to View Pricing, Inventory, Delivery & Lifecycle Information:

[AirBorn:](#)

[PB20SSY](#) [PB20PD11J](#) [PB20PR8J](#) [PB20SJTB](#) [PB20PD11SY](#) [PB20PSY](#) [PB20SD11SY](#) [PB20SD11JTB](#) [PB20PJ](#)
[PB20PR8SY](#)