

PLUG: MC- 111-007- 161-00WN

RECEPTACLE: MC- 121-007- 261-00WN

XX-XXX-XXX-XXX-XXXX

PLUG

RECEPTACLE

SERIES

MC .050" Circular Connector

MC .050" Circular Connector

BODY

- 1 7 position shell
- 2 19 position shell

- 1 7 position shell
- 2 19 position shell

BODY STYLE:
1 Quick disconnect

BODY STYLE:
2 Front mount, quick disconnect
4 Rear mount, quick disconnect

BODY MATERIAL:
1 Polyphenylene Sulfide insulator, brass shell with electroless nickel plating

BODY MATERIAL:
1 Polyphenylene Sulfide insulator, brass shell with electroless nickel plating

SIZE

XXX 007, 019

XXX 007, 019

CONTACTS

- TYPE CONTACTS/TERMINATIONS:**
- 14 Socket, straight, .500" pigtails (.018 dia)
 - 15 Socket, straight, 1.000" pigtails (.018 dia)
 - 16 Socket, straight, crimped wire

- TYPE CONTACTS/TERMINATIONS:**
- 21 Pin, straight, solder cup
 - 24 Pin, straight, .500" pigtails (.018 dia)
 - 25 Pin, straight, 1.000" pigtails (.018 dia)
 - 26 Pin, straight, crimped wire

- PLATING OPTIONS:**
- 1 50 μ " Au contacts (crimp wire)
 - 3 50 μ " Au contacts: 10 μ " Au terminations (pigtail)
 - 5 50 μ " Au contacts; Sn/Pb alloy terminations (pigtail) ☒
 - 7 50 μ " Au contacts; SAC305 terminations (pigtail)

- PLATING OPTIONS:**
- 1 50 μ " Au contacts (crimp wire)
 - 3 50 μ " Au contacts: 10 μ " Au terminations (solder cup, pigtail)
 - 5 50 μ " Au contacts; Sn/Pb alloy terminations (pigtail) ☒
 - 7 50 μ " Au contacts; SAC305 terminations (pigtail)

HARDWARE

STYLE OF HARDWARE:
00 None

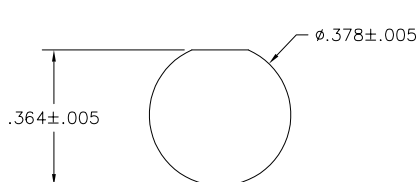
STYLE OF HARDWARE:
00 None

POLARIZATION / WIRING:
00 None
XX For wiring codes, see page MA-3 & MA-4

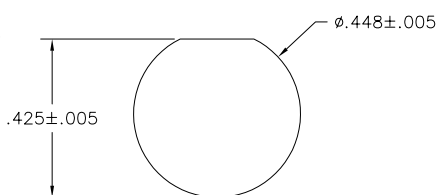
POLARIZATION / WIRING
00 None
XX For wiring codes, see page MA-3 & MA-4

☒ = Option not RoHS compliant

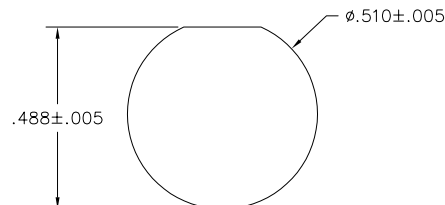
PANEL MOUNTING DIMENSIONS



7 POSITION
FRONT PANEL MOUNT



7 POSITION
REAR PANEL MOUNT



19 POSITION
FRONT AND REAR PANEL MOUNT



Wire Codes

NEMA HP3-EXBEB (Formerly M16878/4-24 TFE 7 strand)

	6"	12"	18"	24"	30"	36"	42"	48"	54"	60"	66"	72"	84"	96"	108"	120"
MIL-STD-681*	WA	WB	WC	UD	UE	WD	UG	UH	UJ	UK	UL	UM	UN	UP	UQ	UR
WHITE	WE	WF	WG	VD	VE	WH	VG	VH	VJ	VK	VL	VM	VN	VP	VQ	VR
YELLOW	WJ	WK	WL			WM										

NEMA HP3-EXBDB (Formerly M16878/4-26 TFE 7 strand)

	6"	12"	18"	24"	30"	36"	42"	48"	54"	60"	66"	72"	84"	96"	108"	120"
MIL-STD-681*	WN	WP	WQ	YD	YE	WR	YG	YH	YJ	YK	YL	YM	YN	YP	YQ	YR
WHITE	WS	WT	WU	ZD	ZE	WV	ZG	ZH	ZJ	ZK	ZL	ZM	ZN	ZP	ZQ	ZR
YELLOW	WW	WX	WY			WZ										

NEMA HP3-EXBCB (Formerly M16878/4-28 TFE 7 strand)

	6"	12"	18"	24"	30"	36"	42"	48"	54"	60"	66"	72"	84"	96"	108"	120"
MIL-STD-681*	XA	XB	XC	1D	1E	XD	1G	1H	1J	1K	1L	1M	1N	1P	1Q	1R
WHITE	XE	XF	XG	2D	2E	XH	2G	2H	2J	2K	2L	2M	2N	2P	2Q	2R
YELLOW	XJ	XK	XL			XM										

TWISTED PAIR per NEMA WC27500-XXRC2U00 (SAE AS22759/11)

	6"	12"	18"	24"	30"	36"	42"	48"	54"	60"	66"	72"	84"	96"	108"	120"
24 AWG	AA	AB	AC	AD	AE	AF	AG	AH	AJ	AK	AL	AM	AN	AP	AQ	AR
26 AWG	BA	BB	BC	BD	BE	BF	BG	BH	BJ	BK	BL	BM	BN	BP	BQ	BR

TWISTED PAIR per NEMA WC27500-XXSC2U00 (SAE AS22759/33)*** ☒

	6"	12"	18"	24"	30"	36"	42"	48"	54"	60"	66"	72"	84"	96"	108"	120"
24 AWG	JA	JB	JC	JD	JE	JF	JG	JH	JJ	JK	JL	JM	JN	JP	JQ	JR
26 AWG	KA	KB	KC	KD	KE	KF	KG	KH	KJ	KK	KL	KM	KN	KP	KQ	KR

For twisted pair wire connect charts, see page MA-9

Twisted pair wire not available on MA, MC or Hybrid connectors

* = Connectors with more than 100 contacts will repeat color code after 100 colors.

*** = Per M83513, corrosion has been experienced on connectors that are pre-wired with 22759/33 and stored in sealed environments. Caution should be exercised when using this wire.

☒ = Option not RoHS compliant

Mouser Electronics

Authorized Distributor

Click to View Pricing, Inventory, Delivery & Lifecycle Information:

[AirBorn:](#)

[MC-141-007-261-00WN](#)