

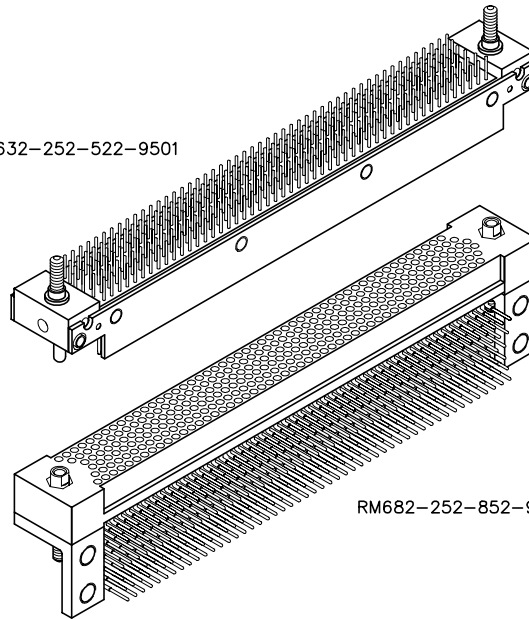
6 • ROW Motherboard or Chassis to Daughterboard

.075"

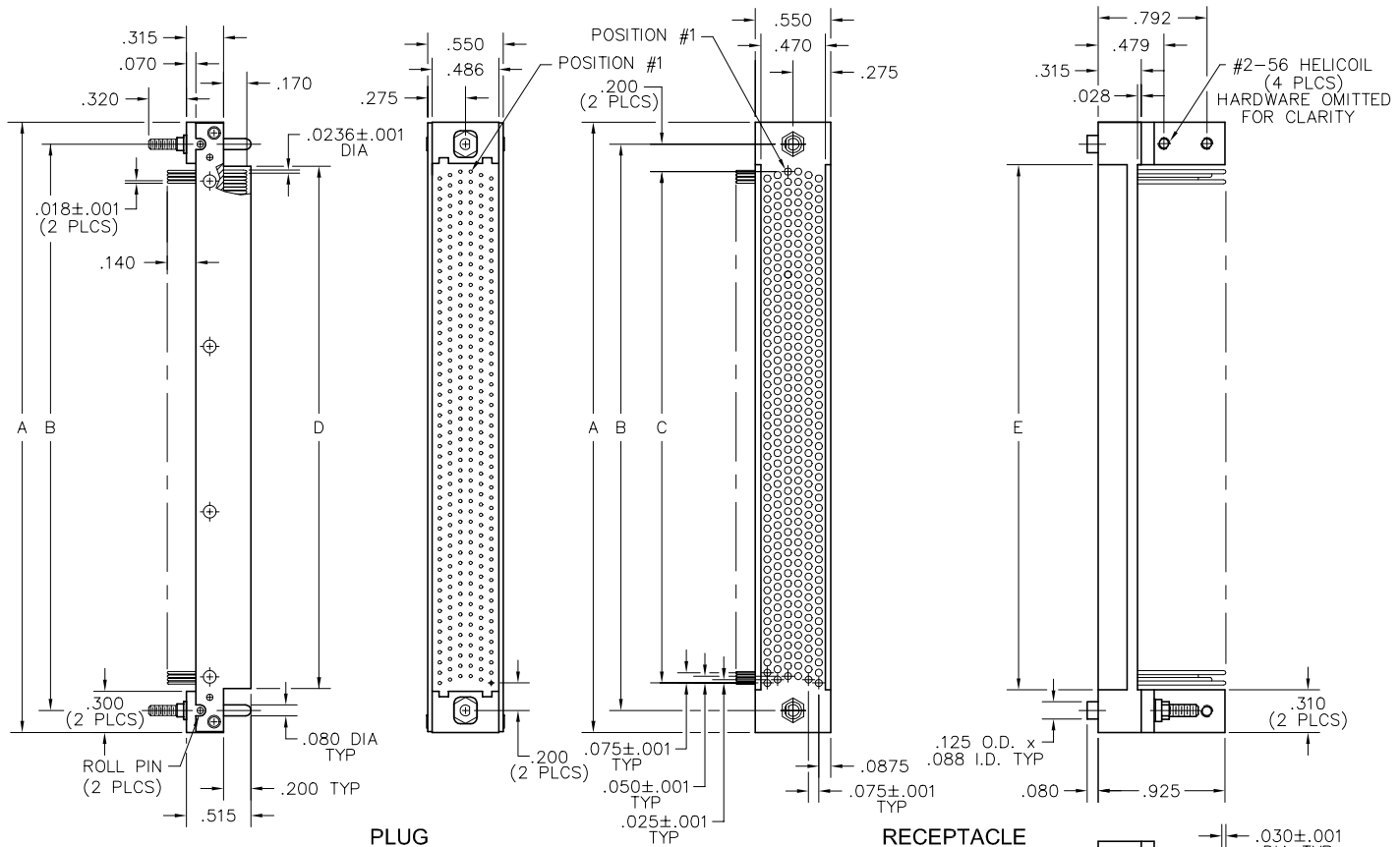
RM6

162 thru 402 Contacts

RM632-252-522-9501



RM682-252-852-9601



DIMENSIONS					
SIZE	A	B	C	D	E
162	2.720	2.400	2.000	2.080	2.100
204	3.245	2.925	2.525	2.605	2.625
252	3.845	3.525	3.125	3.205	3.225
300	4.445	4.125	3.725	3.805	3.825
360	5.195	4.875	4.475	4.550	4.575
402	5.720	5.400	5.000	5.080	5.100

PLUG: RM632-252-522-9501
RECEPTACLE: RM682-252-852-9601
 XXXXX-XXX-XXX-XXXX

PLUG		RECEPTACLE	
SERIES			
RM .075" Screw Machine PC Connector		RM .075" Screw Machine PC Connector	
BODY			
6 6-Row	6 6-Row		
BODY STYLE: 3 Plug, straight, with mounting ears		BODY STYLE: 8 Receptacle, right angle, with mounting brackets	
BODY MATERIAL: 2 Polyphenylene sulfide (PPS)		BODY MATERIAL: 2 Polyphenylene sulfide (PPS)	
SIZE			
162, 204, 252, 300, 360, 402		162, 204, 252, 300, 360, 402	
CONTACTS			
TYPE CONTACTS/TERMINATIONS: 17 Pin, straight, solder cup 40 Pin, straight, flex .093" x .017" dia 51 Pin, straight, dip solder, .109" x .018" dia 52 Pin, straight, dip solder, .140" x .018" dia 53 Pin, straight, dip solder, .172" x .018" dia		TYPE CONTACTS/TERMINATIONS: 84 Socket, right angle, dip solder, .109" x .019" dia 85 Socket, right angle, dip solder, .140" x .019" dia 86 Socket, right angle, dip solder, .172" x .019" dia	
PLATING OPTIONS: 1 Gold plated termination 2 Pre-tinned termination (except solder cup)		PLATING OPTIONS: 1 Gold plated termination 2 Pre-tinned termination	
HARDWARE			
STYLE OF HARDWARE: 0256 None 92 Hex turning jackset, #4-40 thread 93 Fixed jackset, #4-40 thread 95 Guide pins, polarized, unassembled, #2-56 x .320" thread 9501 - 9536 Guide pins, polarized, installed, #2-56 x .320" thread 99 Guide pins, universal		STYLE OF HARDWARE: 0256 None 92 Hex turning jackset, #4-40 thread 93 Fixed jackset, #4-40 thread 96 Guide sockets, polarized, unassembled, #2-56 x .320" thread 9601 - 9636 Guide sockets, polarized, installed 97 Guide sockets, polarized, unassembled, #2-56 x .247" thread 9701 - 9736 Guide sockets, polarized, installed 98 Guide sockets, universal, #2-56 x .247" thread Note: Includes mounting bracket when right angle contacts are supplied	
POLARIZATION: 00 None 01 thru 36 are special identifiers, see page R-57		POLARIZATION: 00 None 01 thru 36 are special identifiers, see page R-57	

6 • ROW

Right Angle PTH Plug

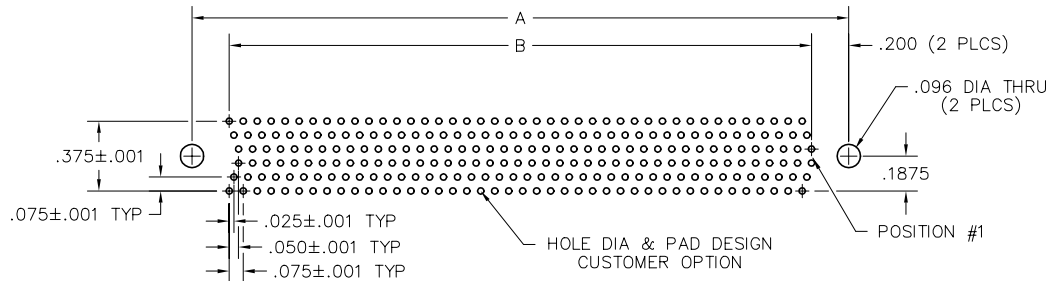
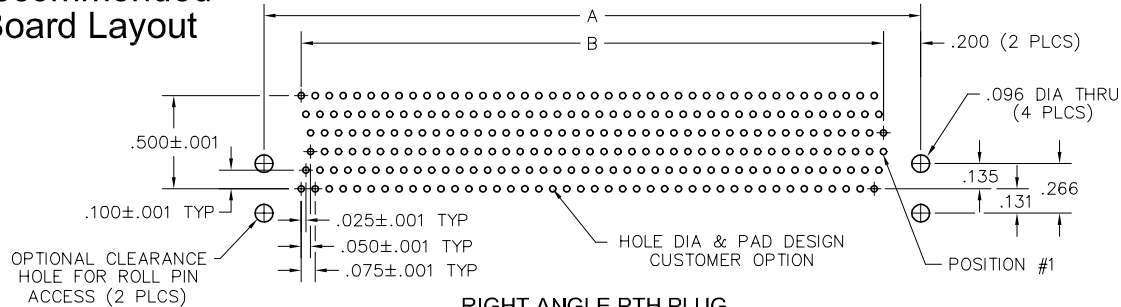
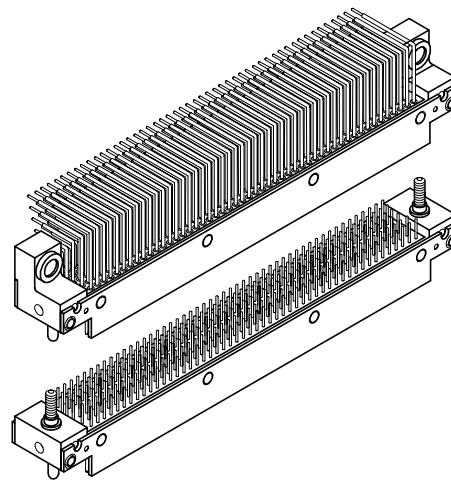
Straight PTH Plug

.075"

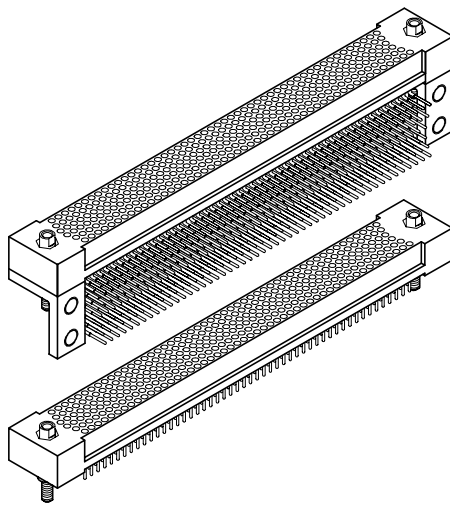
RM6

162 thru 402 Contacts
Recommended
Board Layout

DIMENSIONS		
SIZE	A	B
162	2.400	2.000
204	2.925	2.525
252	3.525	3.125
300	4.125	3.725
360	4.875	4.475
402	5.400	5.000



SIZE	CONTACT ID	SIZE	CONTACT ID
162	162 159 156	300	300 297 294
	161 158 155		159 156 153
	160 157 154		299 296 293
	79 76 73		158 155 152
	80 77 74		298 295 292
	81 78 75		148 145 142
204	111 108 105		149 146 143
	110 107 104		150 147 144
	109 106 103	360	360 357 354
	7 4 1		189 186 183
	8 5 2		359 356 353
	9 6 3		188 185 182
252	135 132 129		558 555 552
	134 131 128		178 175 172
	133 130 127		7 4 1
	7 4 1		8 5 2
	8 5 2		9 6 3
	9 6 3	402	402 399 396
252	252 249 246		210 207 204
	251 248 245		209 206 203
	250 247 244		401 398 395
	124 121 118		208 205 202
	125 122 119		7 4 1
	126 123 120		8 5 2



DIMENSIONS		
SIZE	A	B
162	2.400	2.000
204	2.925	2.525
252	3.525	3.125
300	4.125	3.725
360	4.875	4.475
402	5.400	5.000

6 • ROW

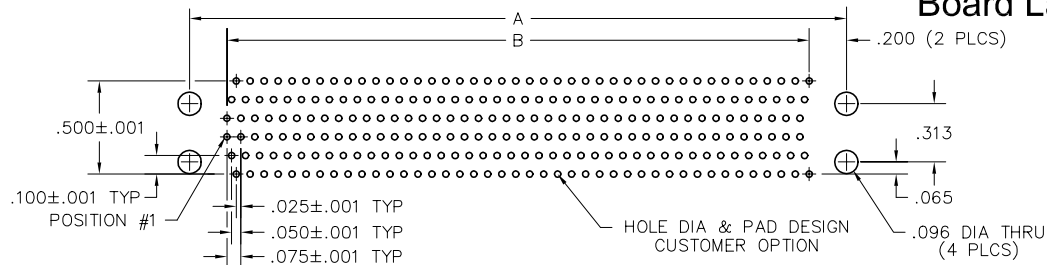
Right Angle PTH Rcpt

Straight PTH Rcpt

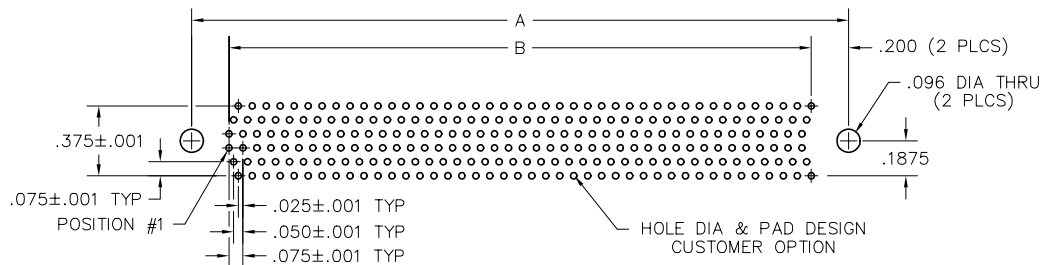
.075"

RM6

162 thru 402 Contacts
Recommended
Board Layout



RIGHT ANGLE PTH RECEPTACLE
PC BOARD VIEWED FROM COMPONENT SIDE



STRAIGHT PTH RECEPTACLE
PC BOARD VIEWED FROM COMPONENT SIDE

SIZE	CONTACT ID	SIZE	CONTACT ID
162	(84 87 90)	300	(153 156 159)
	(83 86 89)		(294 297 300)
	(82 85 88)		(152 155 158)
	(1 4 7)		(293 296 299)
	(2 5 8)		(151 154 157)
204	(3 6 9)		(292 295 298)
	(105 108 111)		(1 4 7)
	(104 107 110)		(2 5 8)
	(103 106 109)		(3 6 9)
	(198 201 204)		(142 145 148)
252	(129 132 135)		(143 146 149)
	(128 131 134)		(144 147 150)
	(127 130 133)		(183 186 189)
	(1 4 7)		(354 357 360)
	(2 5 8)		(182 185 188)
300	(3 6 9)		(353 356 359)
	(246 249 252)		(181 184 187)
	(245 248 251)		(352 355 358)
	(244 247 250)		(1 4 7)
	(118 121 124)		(2 5 8)
360	(119 122 125)		(3 6 9)
	(120 123 126)		(172 175 178)
	(204 207 210)		(173 176 179)
	(203 206 209)		(174 177 180)
	(202 205 208)		(396 399 402)
402	(1 4 7)		(595 598 601)
	(2 5 8)		(394 397 400)
	(3 6 9)		(193 196 199)
			(194 197 200)
			(195 198 201)

Mouser Electronics

Authorized Distributor

Click to View Pricing, Inventory, Delivery & Lifecycle Information:

[AirBorn:](#)

[RM682-360-862-9601](#)