

# EN5322QI 2A PowerSoC

## Step-Down DC-DC Switching Converter with Integrated Inductor

### DESCRIPTION

The EN5322QI is a high efficiency synchronous buck converter with integrated inductor, PWM controller, MOSFETS, and compensation providing the smallest possible solution size.

The 4 MHz operation allows for the use of tiny MLCC capacitors. It also enables a very wide control loop bandwidth providing excellent transient performance and reduced output impedance. The internal compensation is designed for unconditional stability across all operating conditions.

Three VID output voltage select pins provide seven pre-programmed output voltages along with an option for external resistor divider. Output voltage can be programmed on-the-fly to provide fast, dynamic voltage scaling with smooth transitions between VID programmed output voltages.

Intel Enpirion Power Solutions significantly help in system design and productivity by offering greatly simplified board design, layout and manufacturing requirements. In addition, a reduction in the number of components required for the complete power solution helps to enable an overall system cost saving.

All Intel Enpirion products are RoHS compliant and lead-free manufacturing environment compatible.

### FEATURES

- Revolutionary Integrated Inductor
- Total Solution Footprint as Small as 50 mm<sup>2</sup>
- High Efficiency, up to 95 %
- Low Ripple Voltage; 8 mVP-P Typical
- 2% Initial VOUT Accuracy with VID Codes
- 2.4 V to 5.5 V Input Voltage Range
- 2 A Continuous Output Current Capability
- Low Dropout Operation: 100 % Duty Cycle
- Power OK Signal with 5 mA Sink Capability
- Dynamic Voltage Scaling with VID Codes
- 17  $\mu$ A Typical Shutdown Current
- Under Voltage Lockout, Over Current, Short Circuit, and Thermal Protection
- RoHS Compliant; MSL 3 260 °C Reflow

### APPLICATIONS

- Low Power Processors, Network Processors, DSPs' FPGAs and ASICs
- Replacement of LDOs
- Noise Sensitive Applications such as A/V and RF
- Computing, Computer Peripherals, Storage, Networking, and Instrumentation
- DSL, STB, DVR, DTV, and iPC

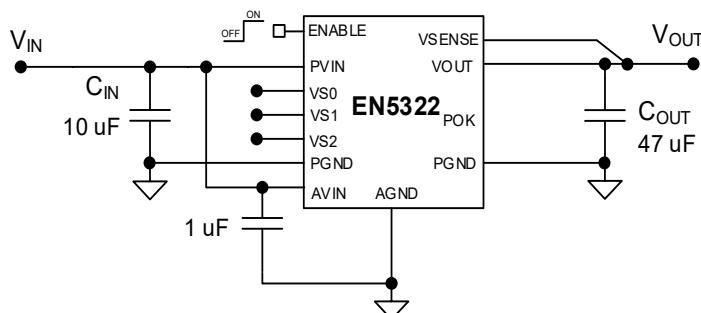


Figure 1. Typical Application Circuit

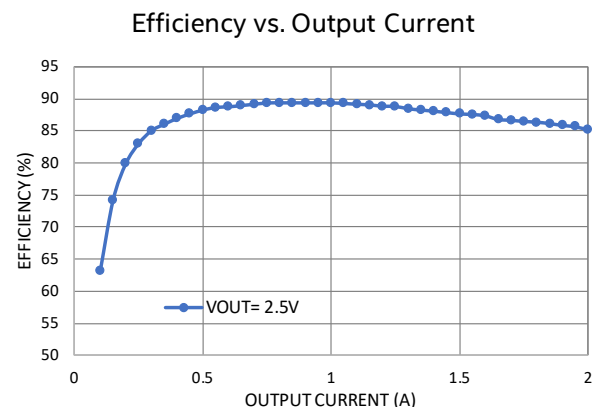


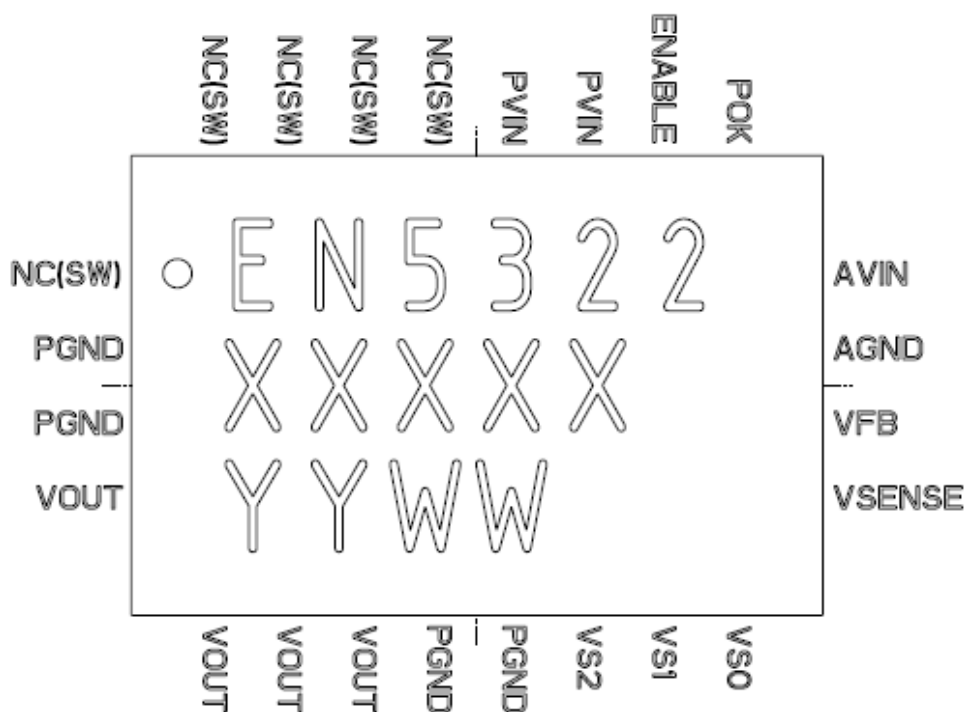
Figure 2. Efficiency at V<sub>IN</sub> = 5V

## ORDERING INFORMATION

| Part Number  | Package Markings | T <sub>J</sub> Rating | Package Description            |
|--------------|------------------|-----------------------|--------------------------------|
| EN5322QI     | EN5322           | -40°C to +125°C       | 24-pin (4mm x 6mm x 1.1mm) QFN |
| EVB-EN5322QI | EVB-EN5322QI     | QFN Evaluation Board  |                                |

**Packing and Marking Information:** <https://www.intel.com/support/quality-and-reliability/packing.html>

## PIN FUNCTIONS



**Figure 3. Pin Diagram (Top View)**

**NOTE A:** NC pins are not to be electrically connected to each other or to any external signal, ground, or voltage. However, they must be soldered to the PCB. Failure to follow this guideline may result in part malfunction or damage.

**NOTE B:** White 'dot' on top left is pin 1 indicator on top of the device package.

## PIN DESCRIPTIONS

| PIN      | NAME    | TYPE   | FUNCTION                                                                                                                                                                                                                                                                                                                                                                            |
|----------|---------|--------|-------------------------------------------------------------------------------------------------------------------------------------------------------------------------------------------------------------------------------------------------------------------------------------------------------------------------------------------------------------------------------------|
| 1, 21-24 | NC(SW)  | -      | No Connect. These pins are internally connected to the common drain output of the internal MOSFETs. NC(SW) pins are not to be electrically connected to any external signal, ground, or voltage. However, they must be soldered to the PCB. Failure to follow this guideline may result in part malfunction or damage.                                                              |
| 2-3, 8-9 | PGND    | Power  | Input/Output Power Ground. Connect these pins to the ground electrode of the input and output filter capacitors. Refer to Layout Considerations section for details.                                                                                                                                                                                                                |
| 4-7      | VOUT    | Power  | Voltage and Power Output. Connect these pins to output capacitor(s).                                                                                                                                                                                                                                                                                                                |
| 10-12    | VS2-VS0 | Analog | Output Voltage Select. These pins set one of seven preset output voltages and the external divider option (refer to Electrical Characteristics table for more details), and can be directly pulled up to $V_{IN}$ or pulled down to GND; these pins must not be left floating.                                                                                                      |
| 13       | VSENSE  | Analog | Sense Pin for Internally Programmed Output Voltages with VID Codes. For either VID code or external resistor divider applications, connect this pin to the last local output filter capacitor for internal compensation.                                                                                                                                                            |
| 14       | VFB     | Analog | Feedback Pin for External Voltage Divider Network. Connect a resistor divider to this pin to set the output voltage. Use 340 k $\Omega$ , 1% or better for the upper resistor.                                                                                                                                                                                                      |
| 15       | AGND    | Power  | Analog Ground for the Controller Circuits.                                                                                                                                                                                                                                                                                                                                          |
| 16       | AVIN    | Power  | Analog Voltage Input for the Controller Circuits. Connect this pin to the input power supply. Use a 1 $\mu$ F bypass capacitor on this pin.                                                                                                                                                                                                                                         |
| 17       | POK     | Analog | Power OK with an Open Drain Output. Refer to Power OK section.                                                                                                                                                                                                                                                                                                                      |
| 18       | ENABLE  | Analog | Input Enable. A logic high signal on this pin enables the output and initiates a soft start. A logic low signal disables the output and discharges the output to GND. The ENABLE pin should not be left floating as it could be in an unknown and random state. It is recommended to enable the device after both PVIN and AVIN is in regulation. See ENABLE operation for details. |
| 19-20    | PVIN    | Power  | Input Power Supply. Connect to input supply. Decouple with input capacitor(s) to PGND.                                                                                                                                                                                                                                                                                              |

## ABSOLUTE MAXIMUM RATINGS

**CAUTION:** Absolute Maximum ratings are stress ratings only. Functional operation beyond the recommended operating conditions is not implied. Stress beyond the absolute maximum ratings may impair device life. Exposure to absolute maximum rated conditions for extended periods may affect device reliability.

### Absolute Maximum Pin Ratings

| PARAMETER                                       | SYMBOL | MIN  | MAX             | UNITS |
|-------------------------------------------------|--------|------|-----------------|-------|
| Voltages on: PVIN, AVIN, VOUT                   |        | -0.3 | 6.5             | V     |
| Voltages on: VSENSE, VS0, VS1, VS2, ENABLE, POK |        | -0.3 | V <sub>IN</sub> | V     |
| Voltage on: VFB                                 |        | -0.3 | 2.7             | V     |

### Absolute Maximum Thermal Ratings

| PARAMETER                              | CONDITION                      | MIN | MAX  | UNITS |
|----------------------------------------|--------------------------------|-----|------|-------|
| Maximum Operating Junction Temperature |                                |     | +150 | °C    |
| Storage Temperature Range              |                                | -65 | +150 | °C    |
| Reflow Peak Body Temperature           | (10 Sec) MSL3 JEDEC J-STD-020A |     | +260 | °C    |

### Absolute Maximum ESD Ratings

| PARAMETER                  | CONDITION | MIN   | MAX | UNITS |
|----------------------------|-----------|-------|-----|-------|
| HBM (Human Body Model)     |           | ±2000 |     | V     |
| CDM (Charged Device Model) |           | ±500  |     | V     |

## RECOMMENDED OPERATING CONDITIONS

| PARAMETER                           | SYMBOL           | MIN | MAX                                              | UNITS |
|-------------------------------------|------------------|-----|--------------------------------------------------|-------|
| Input Voltage Range                 | V <sub>IN</sub>  | 2.4 | 5.5                                              | V     |
| Output Voltage Range                | V <sub>OUT</sub> | 0.6 | V <sub>IN</sub> - V <sub>DR</sub> <sup>(1)</sup> | V     |
| Output Current Range                | I <sub>OUT</sub> | 0   | 2                                                | A     |
| Operating Ambient Temperature Range | T <sub>A</sub>   | -40 | +85                                              | °C    |
| Operating Junction Temperature      | T <sub>J</sub>   | -45 | +125                                             | °C    |

<sup>(1)</sup> V<sub>DROPOUT</sub> is defined as (I<sub>LOAD</sub> X Dropout Resistance) including temperature effect.

## THERMAL CHARACTERISTICS

| PARAMETER                                                      | SYMBOL        | TYPICAL | UNITS |
|----------------------------------------------------------------|---------------|---------|-------|
| Thermal Shutdown                                               | $T_{SD}$      | 155     | °C    |
| Thermal Shutdown Hysteresis                                    | $T_{SDHYS}$   | 15      | °C    |
| Thermal Resistance: Junction to Ambient (0 LFM) <sup>(2)</sup> | $\theta_{JA}$ | 36      | °C/W  |
| Thermal Resistance: Junction to Case (0 LFM)                   | $\theta_{JC}$ | 6       | °C/W  |

<sup>(2)</sup> Based on a 2 oz. copper board and proper thermal design in line with JEDEC EIJ-JESD51 standards

## ELECTRICAL CHARACTERISTICS

NOTE:  $T_A = 25^\circ\text{C}$  unless otherwise noted. Typical values are at  $V_{IN} = 5\text{V}$ .

| PARAMETER                                    | SYMBOL     | TEST CONDITIONS                                                                                                                                                                              | MIN          | TYP   | MAX          | UNITS |
|----------------------------------------------|------------|----------------------------------------------------------------------------------------------------------------------------------------------------------------------------------------------|--------------|-------|--------------|-------|
| Operating Input Voltage                      | $V_{IN}$   |                                                                                                                                                                                              | 2.4          |       | 5.5          | V     |
| Under Voltage Lock-out                       | $V_{UVLO}$ | $V_{IN}$ going low to high                                                                                                                                                                   |              | 2.2   |              | V     |
| UVLO Hysteresis                              |            |                                                                                                                                                                                              |              | 0.15  |              | V     |
| Output Voltage with VID Codes <sup>(3)</sup> | $V_{OUT}$  | $T_A = 25^\circ\text{C}$ ; $V_{IN} = 5\text{V}$<br>$I_{LOAD} = 100\text{ mA}$                                                                                                                | -2.0         |       | +2.0         | %     |
| Feedback Pin Voltage                         | $V_{FB}$   | $T_A = 25^\circ\text{C}$ ; $V_{IN} = 5\text{V}$<br>$I_{LOAD} = 100\text{ mA}$ , $VS0 = VS1 = VS2 = 1$                                                                                        | 0.588        | 0.600 | 0.612        | V     |
| Output Voltage with VID Codes <sup>(3)</sup> | $V_{OUT}$  | $2.4\text{ V} \leq V_{IN} \leq 5.5\text{ V}$ , $I_{LOAD} = 0 \sim 2\text{ A}$ , $-40^\circ\text{C} \leq T_A \leq +85^\circ\text{C}$<br>$V_{OUT} > 0.8\text{V}$<br>$V_{OUT} \leq 0.8\text{V}$ | -3.0<br>-3.5 |       | +3.0<br>+3.0 | %     |
| Feedback Pin Voltage                         | $V_{FB}$   | $2.4\text{V} \leq V_{IN} \leq 6.6\text{V}$ , $I_{LOAD} = 0 \sim 2\text{A}$ ,<br>$T_A = -40^\circ\text{C}$ to $+85^\circ\text{C}$ ,<br>$VS0=VS1=VS2=1$                                        | 0.582        | 0.600 | 0.618        | V     |
| Dynamic Voltage Slew Rate                    |            | Switching between VID settings                                                                                                                                                               | 0.975        | 1.5   | 2.025        | V/ms  |
| Soft Start Slew Rate                         |            | VID Mode $V_{OUT}$ Programming                                                                                                                                                               | 0.975        | 1.5   | 2.025        | V/ms  |
| Soft Start Time                              |            | VFB Mode $V_{OUT}$ Programming                                                                                                                                                               | 0.78         | 1.2   | 1.62         | ms    |

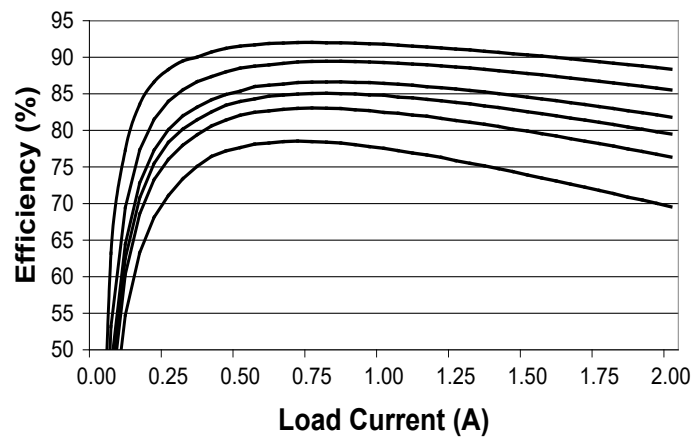
| PARAMETER                                             | SYMBOL       | TEST CONDITIONS                                                                                             | MIN        | TYP  | MAX             | UNITS             |
|-------------------------------------------------------|--------------|-------------------------------------------------------------------------------------------------------------|------------|------|-----------------|-------------------|
| VFB, ENABLE, VS0-VS2 Pin Input Current <sup>(4)</sup> |              | $-40^{\circ}\text{C} \leq T_A \leq +85^{\circ}\text{C}$                                                     |            |      | +/-40           | nA                |
| ENABLE, VS0-VS2 Voltage Threshold                     |              | Logic Low<br>Logic High                                                                                     | 0.0<br>1.4 |      | 0.4<br>$V_{IN}$ | V                 |
| POK Upper Threshold                                   |              | $V_{OUT}$ Rising                                                                                            |            | 111  |                 | %                 |
| POK Upper Threshold                                   |              | $V_{OUT}$ Falling                                                                                           |            | 102  |                 | %                 |
| POK Lower Threshold                                   |              | $V_{OUT}$ Rising                                                                                            |            | 92   |                 | %                 |
| POK Lower Threshold                                   |              | $V_{OUT}$ Falling                                                                                           |            | 90   |                 | %                 |
| POK Low Voltage                                       |              | $I_{SINK} = 5 \text{ mA}$ , $-40^{\circ}\text{C} \leq T_A \leq +85^{\circ}\text{C}$                         |            | 0.15 | 0.4             | V                 |
| POK Pin $V_{OH}$ Leakage Current                      |              | POK High, $-40^{\circ}\text{C} \leq T_A \leq +85^{\circ}\text{C}$                                           |            |      | 500             | nA                |
| Shutdown Current                                      |              | ENABLE Low                                                                                                  |            | 17   |                 | $\mu\text{A}$     |
| Quiescent Current                                     |              | No Switching                                                                                                |            | 800  |                 | $\mu\text{A}$     |
| Quiescent Current                                     |              | Switching, $V_{OUT} = 1.2 \text{ V}$                                                                        |            | 15   |                 | mA                |
| Current Limit Threshold                               |              | $2.4 \text{ V} \leq V_{IN} \leq 5.5 \text{ V}$ ,<br>$-40^{\circ}\text{C} \leq T_A \leq +85^{\circ}\text{C}$ | 2.1        | 3.0  |                 | A                 |
| PFET On Resistance                                    |              |                                                                                                             |            | 160  |                 | $\text{m}\Omega$  |
| NFET On Resistance                                    |              |                                                                                                             |            | 60   |                 | $\text{m}\Omega$  |
| Dropout Resistance                                    |              |                                                                                                             |            | 200  | 300             | $\text{m}\Omega$  |
| Operating Frequency                                   | $F_{OSC}$    |                                                                                                             |            | 4    |                 | MHz               |
| Output Ripple Voltage                                 | $V_{RIPPLE}$ | $C_{OUT} = 1 \times 47 \mu\text{F}$ 1206 X5R MLCC, $V_{OUT} = 1.2 \text{ V}$ , $I_{LOAD} = 2 \text{ A}$     |            | 14   |                 | $\text{mV}_{P-P}$ |
|                                                       |              | $C_{OUT} = 2 \times 22 \mu\text{F}$ 0805 X5R MLCC, $V_{OUT} = 1.2 \text{ V}$ , $I_{LOAD} = 2 \text{ A}$     |            | 8    |                 | $\text{mV}_{P-P}$ |

(3) The tolerances hold true only if  $V_{IN}$  is greater than ( $V_{OUT} + V_{DROPOUT}$ ).

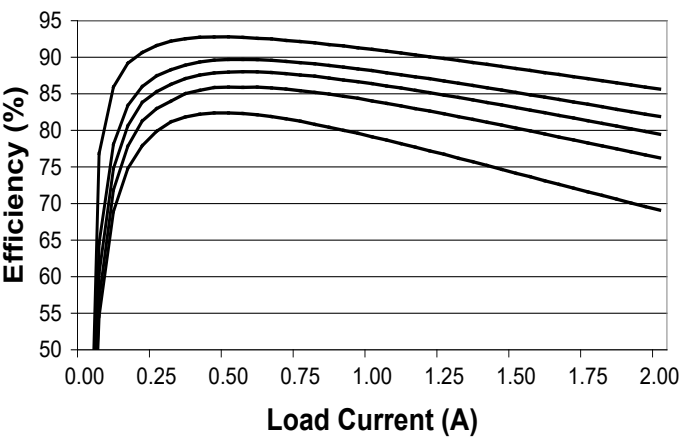
(4) VFB, ENABLE, VS0-VS2 pin input current specification is guaranteed by design.

TYPICAL PERFORMANCE CURVES

Efficiency vs. Load Current (Vin = 5.0V)

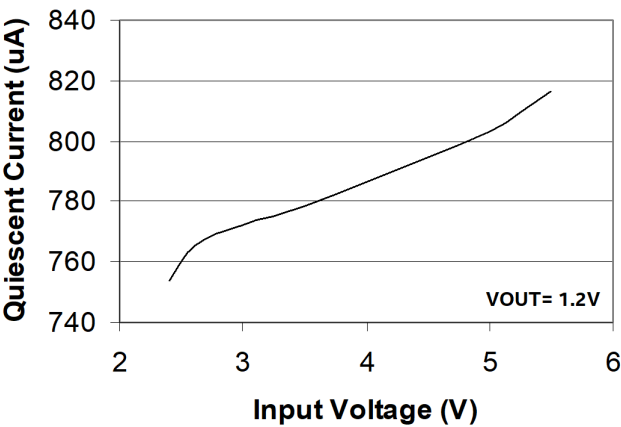
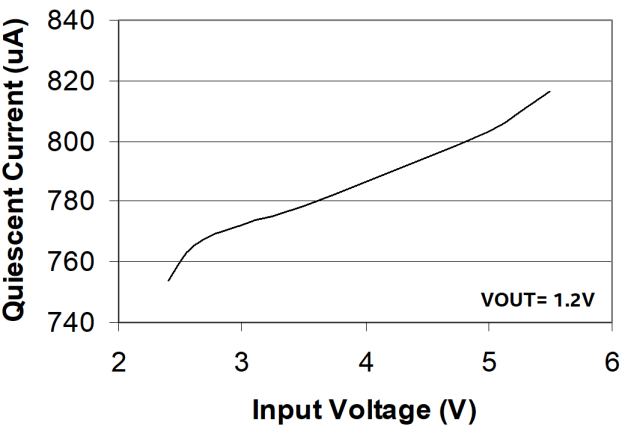


Efficiency vs. Load Current (Vin = 3.3V)



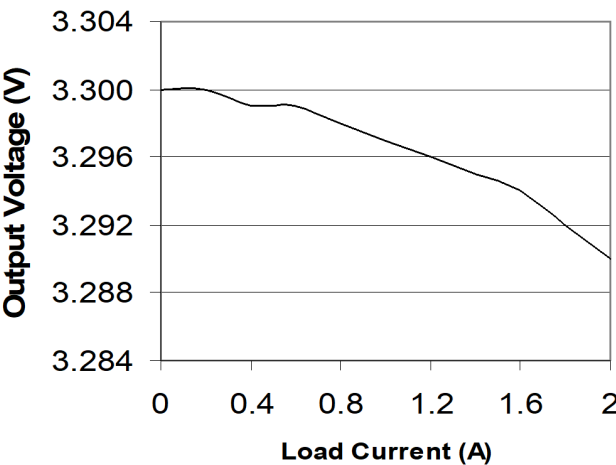
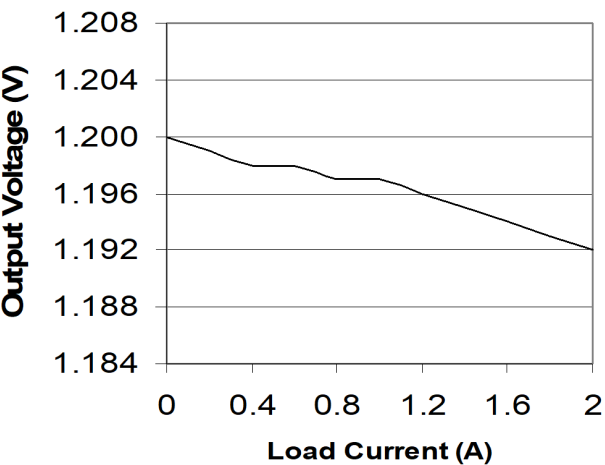
Top to Bottom: VOUT = 3.3V, 2.5V, 1.8V, 1.5V, 1.2V, 0.8V

Top to Bottom: VOUT = 2.5V, 1.8V, 1.5V, 1.2V, 0.8V



Quiescent Current (No Switching) vs. Input Voltage

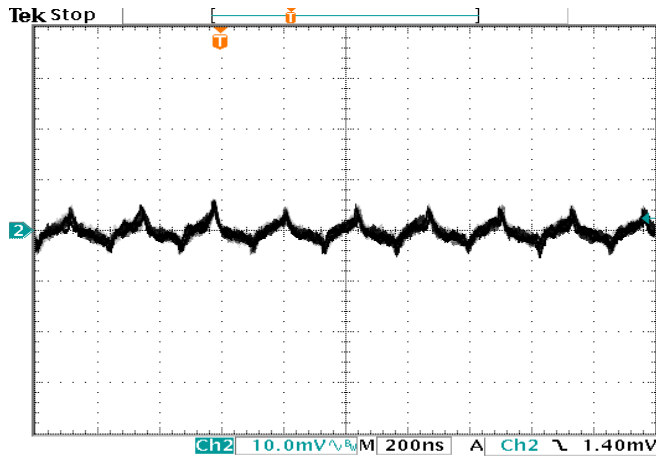
Quiescent Current (Switching) vs. Input Voltage



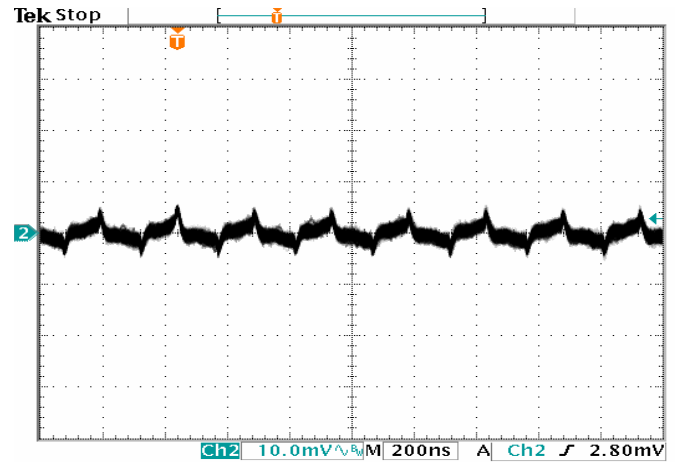
Load Regulation (VIN = 5 V, VOUT = 1.2V)

Load Regulation (VIN = 5 V, VOUT = 3.3V)

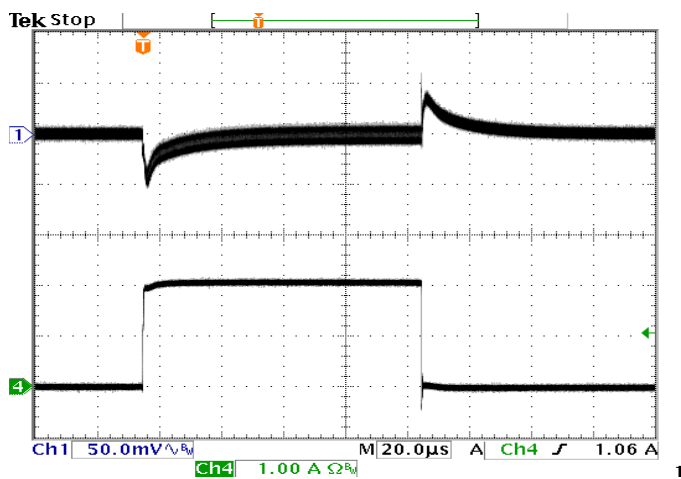
## TYPICAL PERFORMANCE CHARACTERISTICS



Output Ripple:  $V_{IN} = 3.3V$ ,  $V_{OUT} = 1.2V$ ,  $I_{LOAD} = 2A$ ,  $C_{OUT} = 1 \times 47\mu F$

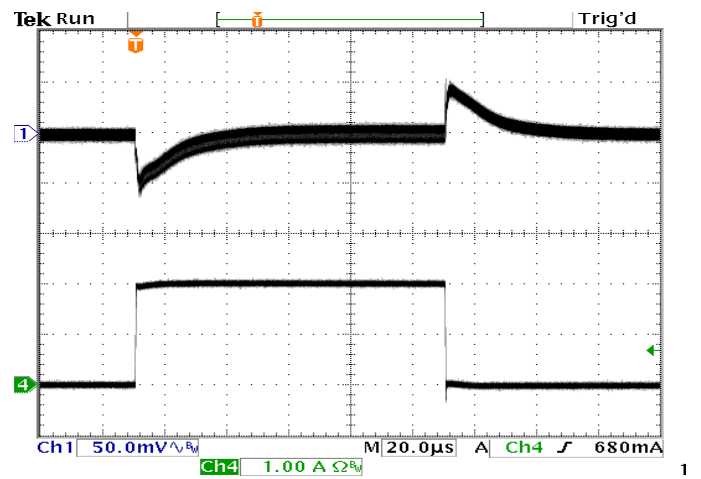


Output Ripple:  $V_{IN} = 3.3V$ ,  $V_{OUT} = 1.2V$ ,  $I_{LOAD} = 2A$ ,  $C_{OUT} = 2 \times 22\mu F$



Transient Response:  $V_{IN} = 5V$ ,  $V_{OUT} = 1.2V$ ,  $C_{OUT} = 1 \times 47\mu F$ , 0-2A Load Step, Slew Rate  $\geq 10A/\mu S$

CH1:  $V_{OUT}$ , CH4:  $I_{LOAD}$

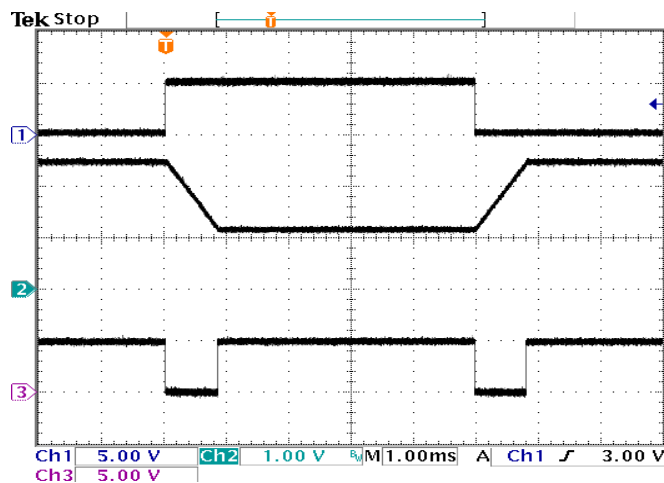


Transient Response:  $V_{IN} = 5V$ ,  $V_{OUT} = 3.3V$ ,  $C_{OUT} = 1 \times 47\mu F$ , 0-2A Load Step, Slew Rate  $\geq 10A/\mu S$

CH1:  $V_{OUT}$ , CH4:  $I_{LOAD}$



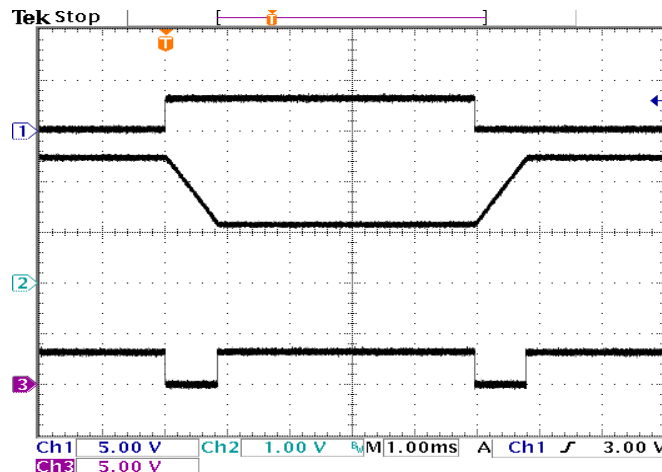
## TYPICAL PERFORMANCE CHARACTERISTICS (CONTINUED)



**V<sub>OUT</sub> Scaling with VID Codes at V<sub>IN</sub> = 5V**

(V<sub>OUT</sub> = 1.2 V – 2.5 V, I<sub>OUT</sub> = 0 – 2 A)

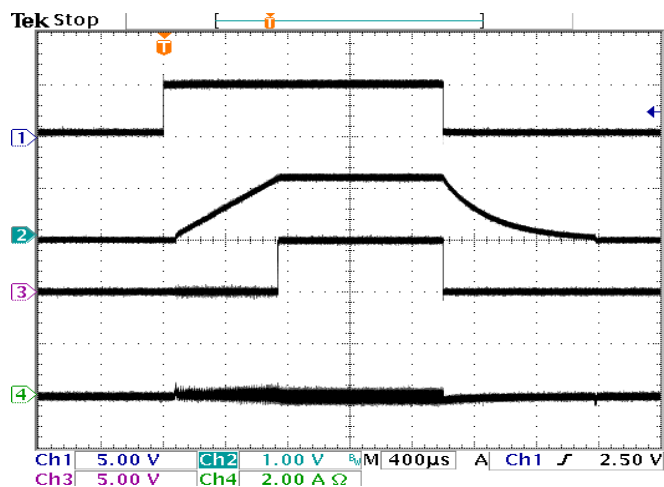
CH1: VS2, CH2: V<sub>OUT</sub>, CH3: POK



**V<sub>OUT</sub> Scaling with VID Codes at V<sub>IN</sub> = 3.3V**

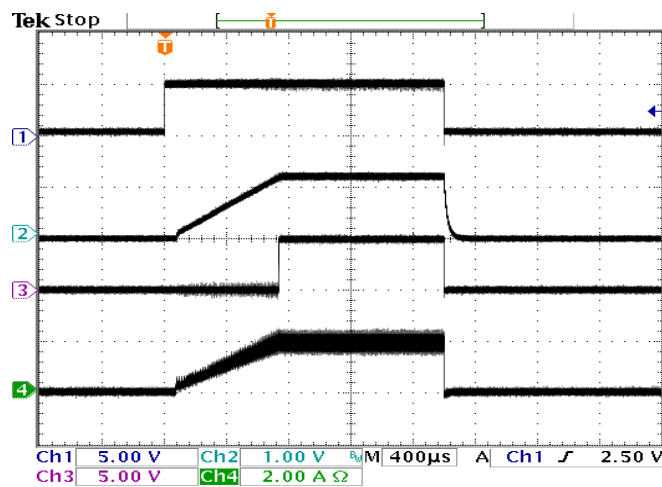
(V<sub>OUT</sub> = 1.2 V – 2.5 V, I<sub>OUT</sub> = 0 – 2 A)

CH1: VS2, CH2: V<sub>OUT</sub>, CH3: POK



**Power Up/Down at No Load: V<sub>IN</sub> = 5V, V<sub>OUT</sub> = 1.2V**

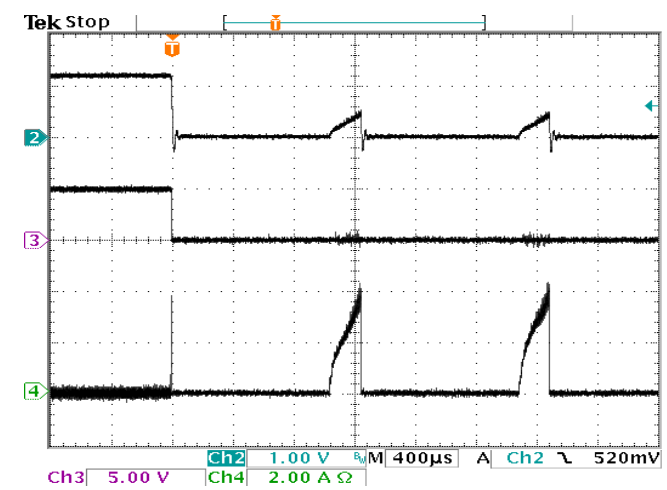
CH1: ENABLE, CH2: V<sub>OUT</sub>, CH3: POK, CH4: I<sub>INDUCTOR</sub>



**Power Up/Down at 0.6Ω: V<sub>IN</sub> = 5V, V<sub>OUT</sub> = 1.2V**

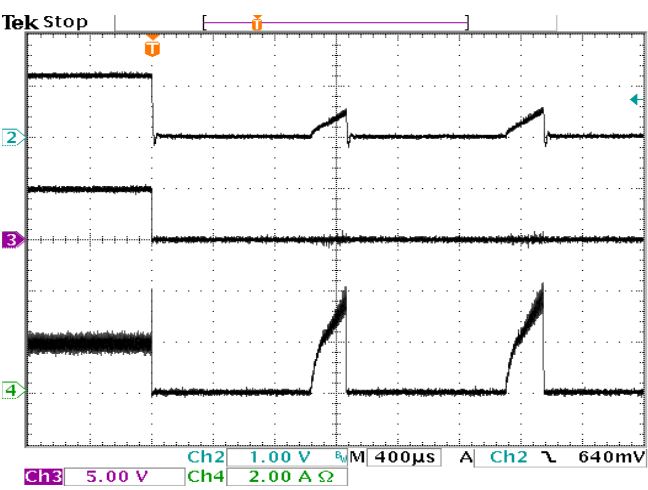
CH1: ENABLE, CH2: V<sub>OUT</sub>, CH3: POK, CH4: I<sub>INDUCTOR</sub>

TYPICAL PERFORMANCE CHARACTERISTICS (CONTINUED)



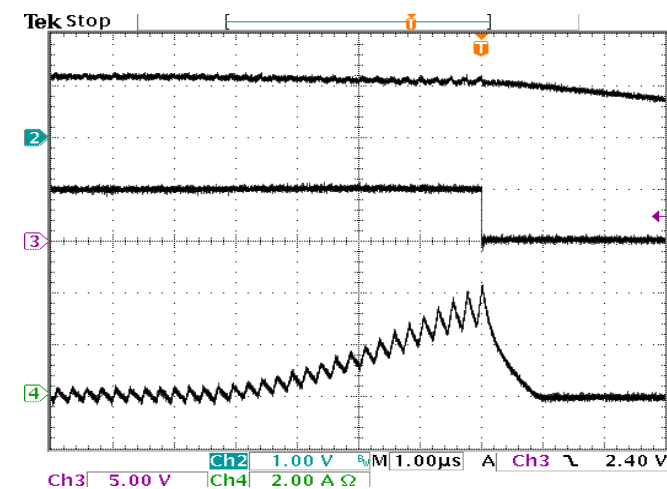
Output Over Load at No Load:  $V_{IN}=5V$ ,  $V_{OUT}=1.2V$

CH2:  $V_{OUT}$ , CH3: POK, CH4:  $I_{INDUCTOR}$



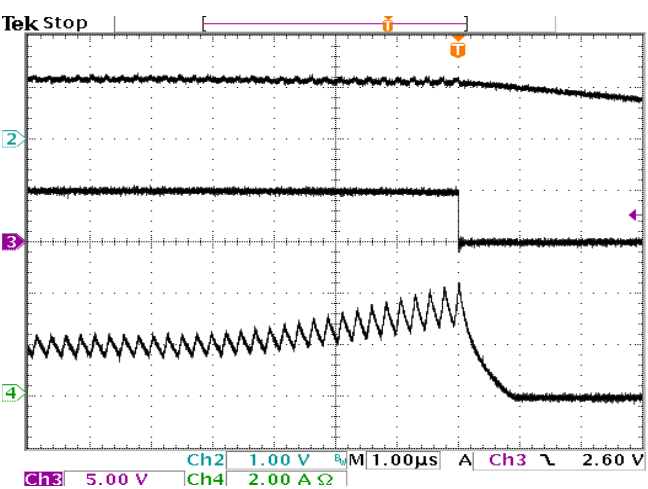
Output Over Load at 2A Load:  $V_{IN}=5V$ ,  $V_{OUT}=1.2V$

CH2:  $V_{OUT}$ , CH3: POK, CH4:  $I_{INDUCTOR}$



Output Over Load at No Load:  $V_{IN}=5V$ ,  $V_{OUT}=1.2V$

CH2:  $V_{OUT}$ , CH3: POK, CH4:  $I_{INDUCTOR}$



Output Over Load at 2A Load:  $V_{IN}=5V$ ,  $V_{OUT}=1.2V$

CH2:  $V_{OUT}$ , CH3: POK, CH4:  $I_{INDUCTOR}$

FUNCTIONAL BLOCK DIAGRAM

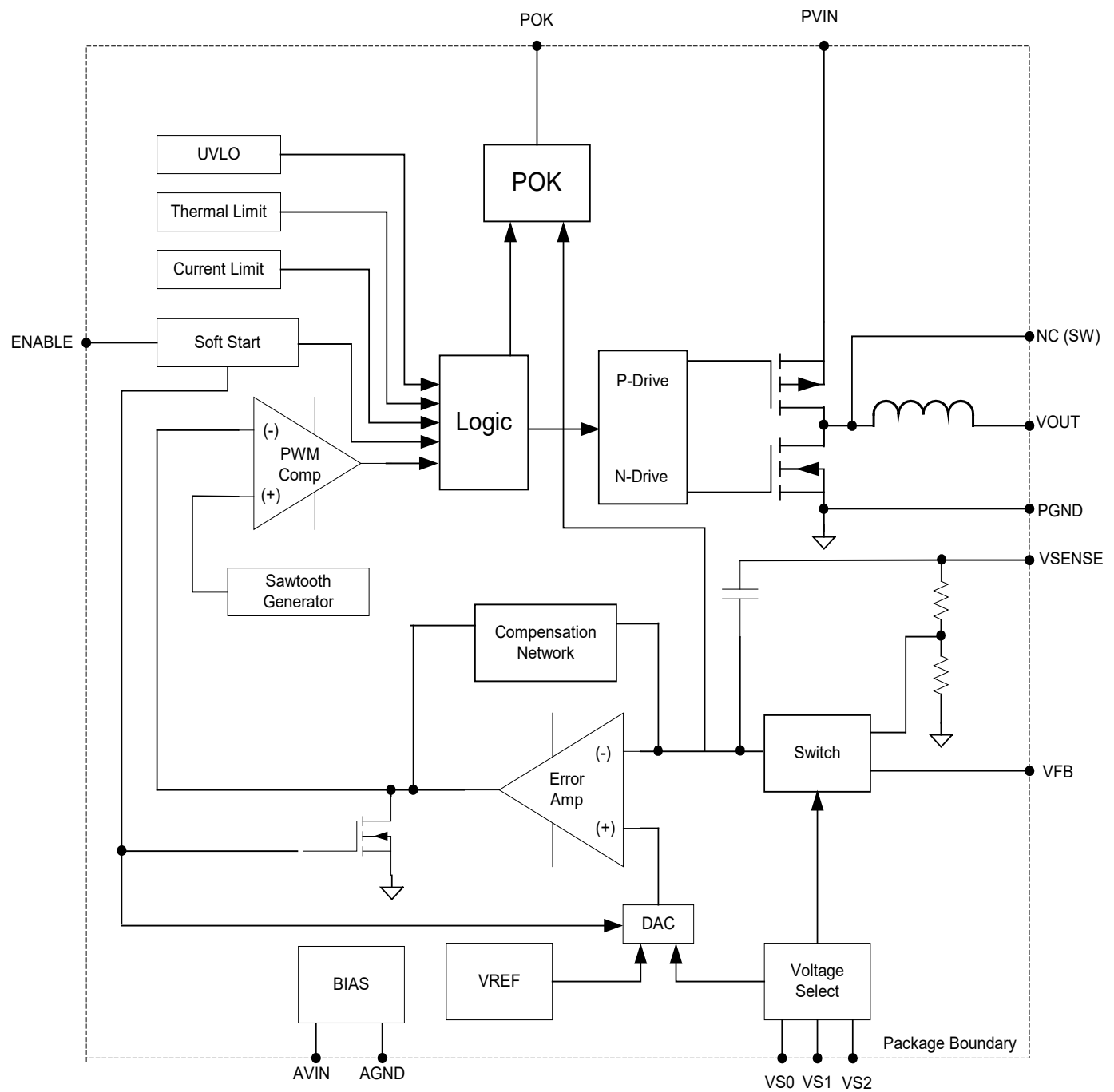


Figure 4. Functional Block Diagram

## FUNCTIONAL DESCRIPTION

### Synchronous DC-DC Step-Down PowerSoC

The EN5322QI leverages advanced CMOS technology to provide high switching frequency, while also maintaining high efficiency.

Packaged in a 4 mm x 6 mm x 1.1 mm QFN, the EN5322QI provides a high degree of flexibility in circuit design while maintaining a very small footprint. High switching frequency allows for the use of very small MLCC input and output filter capacitors.

The converter uses voltage mode control to provide high noise immunity, low output impedance and excellent load transient response. No external compensation components are needed for most applications.

Output voltage is chosen from one of seven preset values via a three-pin VID voltage select scheme. An external divider option enables the selection of any output voltage  $\geq 0.6$  V. The VID pins can be toggled dynamically to implement glitch-free dynamic voltage scaling between any two VID preset values.

POK monitors the output voltage and signals if it is within  $\pm 10\%$  of nominal. Protection features include under voltage lockout (UVLO), over current protection, short circuit protection, and thermal overload protection.

### Stability over Wide Range of Operating Conditions

The EN5322QI utilizes an internal compensation network and is designed to provide stable operation over a wide range of operating conditions. To improve transient performance or reduce output voltage ripple with dynamic loads you have the option to add supplementary capacitance to the output. When programming VOUT using the VID pins, the EN5322QI is stable with up to 60 $\mu$ F of output capacitance without compensation adjustment. Additional output capacitance above 60 $\mu$ F can be accommodated with compensation adjustment depending on the application. When programming VOUT with the resistor divider option, the maximum output capacitance may be limited. Please refer to the section on soft start for more details. The high switching frequency allows for a wide control loop bandwidth.

### Soft Start

The EN5322QI has an internal soft-start circuit that controls the ramp of the output voltage. The control circuitry limits the V<sub>OUT</sub> ramp rate to levels that are safe for the Power MOSFETS and the integrated inductor.

The EN5322QI has two soft start operating modes. When VOUT is programmed using a preset voltage in VID mode, the device has a constant slew rate. When the EN5322QI is configured in external resistor divider mode, the device has a constant VOUT ramp time. Output voltage slew rate and ramp time is given in the Electrical Characteristics Table.

Excess bulk capacitance on the output of the device can cause an over-current condition at startup.

When operating in VID mode, the maximum total capacitance on the output, including the output filter capacitor and bulk and decoupling capacitance, at the load, is given as:

$$C_{OUT\_TOTAL\_MAX} = C_{OUT\_Filter} + C_{OUT\_BULK} = 1000\mu F$$

When the EN5322QI output voltage is programmed using an external resistor divider the maximum total capacitance on the output is given as:

$$C_{OUT\_TOTAL\_MAX} = 1.867 \times 10^{-3} / V_{OUT} \text{ Farads}$$

The above number and formula assume a no load condition at startup.

## Over Current/Short Circuit Protection

When an over current condition occurs,  $V_{OUT}$  is pulled low. This condition is maintained for a period of 1.2 ms and then a normal soft start cycle is initiated. If the over current condition still persists, this cycle will repeat.

## Under Voltage Lockout

An under voltage lockout circuit will hold off switching during initial power up until the input voltage reaches sufficient level to ensure proper operation. If the voltage drops below the UVLO threshold the lockout circuitry will again disable switching. Hysteresis is included to prevent chattering between UVLO high and low states.

## Enable

The ENABLE pin provides means to shut down the converter or initiate normal operation. A logic high will enable the converter to go through the soft start cycle and regulate the output voltage to the desired value.

A logic low will allow the device to discharge the output and go into shutdown mode for minimal power consumption. When the output is discharged, an auxiliary NFET turns on and limits the discharge current to 300 mA or below. In shutdown mode, the device typically drains 17  $\mu$ A. The ENABLE pin should not be left floating as it could be in an unknown and random state. It is recommended to enable the device after both PVIN and AVIN is in regulation.

At extremely cold conditions below  $-30^{\circ}\text{C}$ , the controller may not be properly powered if ENABLE is tied directly to AVIN during startup. It is recommended to use an external RC circuit to delay the ENABLE voltage rise so that the internal controller has time to startup into regulation (see circuit below). The RC circuit may be adjusted so that AVIN and PVIN are above UVLO before ENABLE is high. The startup time will be delayed by the extra time it takes for the capacitor voltage to reach the ENABLE threshold.

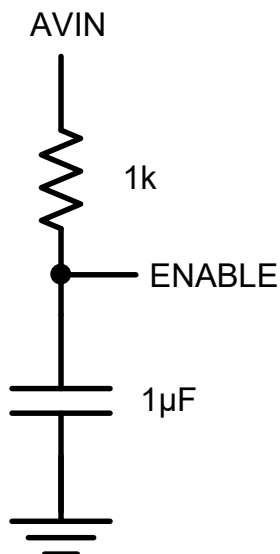


Figure 5. ENABLE Delay Circuit

## Thermal Shutdown

When excessive power is dissipated in the device, its junction temperature rises. Once the junction temperature exceeds the thermal shutdown temperature 155 °C, the thermal shutdown circuit turns off the converter, allowing the device to cool. When the junction temperature drops 15 °C, the device will be re-enabled and go through a normal startup process.

## Power OK

The EN5322QI provides an open drain output to indicate if the output voltage stays within 92% to 111% of the set value. Within this range, the POK output is allowed to be pulled high. Outside this range, POK remains low. However, during transitions such as power up, power down, and dynamic voltage scaling, the POK output will not change state until the transition is complete for enhanced noise immunity.

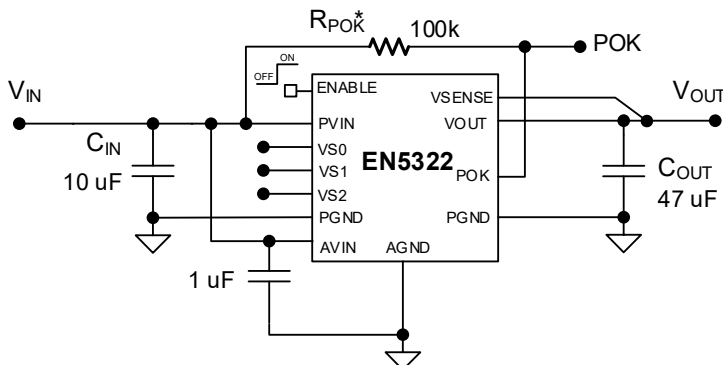
The POK has 5 mA sink capability for events where it needs to feed a digital controller with standard CMOS inputs. When POK is pulled high, the pin leakage current is as low as 500 nA maximum over temperature. This allows a large pull up resistor such as 100 kΩ to be used for minimal current consumption in shutdown mode.

The POK output can also be conveniently used as an ENABLE input of the next stage for power sequencing of multiple converters.

APPLICATION INFORMATION

Output Voltage Setting

To provide the highest degree of flexibility in choosing output voltage, the EN5322QI uses a 3 pin VID (Voltage ID) output voltage select arrangement. This allows the designer to choose one of seven preset voltages, or to use an external voltage divider. Figure 6 shows a typical application circuit with VID codes. Internally, the output of the VID multiplexer sets the value for the voltage reference DAC, which in turn is connected to the non-inverting input of the error amplifier. This allows the use of a single feedback divider with constant loop gain and optimum compensation, independent of the output voltage selected.



\* Leave RPOK open if the POK function is not used.

Figure 6. Typical Application Circuit with VID Codes

**NOTE:** Enable can be separated from PVIN if the application requires it

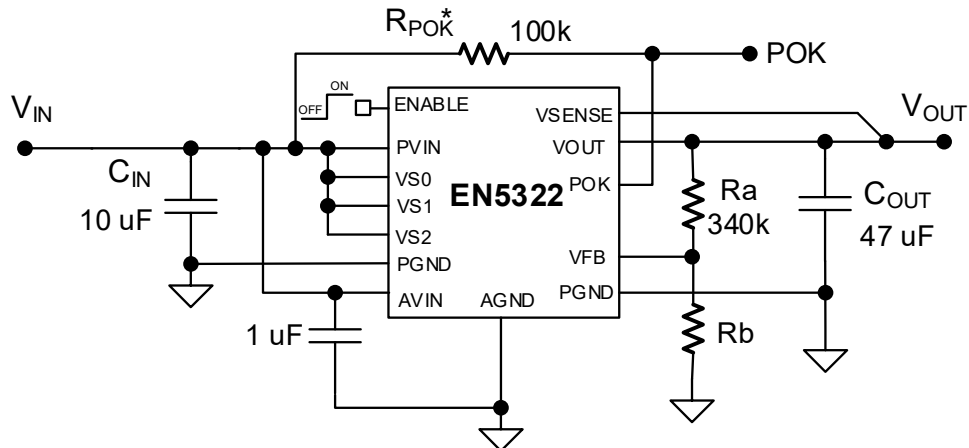
Table 1 shows the various VS0-VS2 pin logic states and the associated output voltage levels. A logic “1” indicates a connection to VIN or to a “high” logic voltage level. A logic “0” indicates a connection to ground or to a “low” logic voltage level. These pins can be either hardwired to VIN or GND or alternatively can be driven by standard logic levels. Logic low is defined as  $V_{LOW} \leq 0.4V$ . Logic high is defined as  $V_{HIGH} \geq 1.4V$ . Any level between these two values is indeterminate. These pins must not be left floating.

Table 1. VID voltage select settings

| VS2 | VS1 | VS0 | VOUT            |
|-----|-----|-----|-----------------|
| 0   | 0   | 0   | 3.3V            |
| 0   | 0   | 1   | 2.5V            |
| 0   | 1   | 0   | 1.8V            |
| 0   | 1   | 1   | 1.5V            |
| 1   | 0   | 0   | 1.25V           |
| 1   | 0   | 1   | 1.2V            |
| 1   | 1   | 0   | 0.8V            |
| 1   | 1   | 1   | User Selectable |

## External Voltage Divider

As described above, the external voltage divider option is chosen by connecting the VS0, VS1, and VS2 pins to VIN or logic “high”. The EN5322QI uses a separate feedback pin, VFB, when using the external divider. VSENSE must be connected to VOUT as indicated in Figure 7.



\* Leave  $R_{POK}$  open if the POK function is not used.

**Figure 7. Typical Application Circuit with External Resistor Divider.**

**NOTE:** Enable can be separated from PVIN if the application requires it

If the external voltage divider option is chosen, use 340 k $\Omega$ , 1% or better for the upper resistor Ra. Then the value of the bottom resistor Rb in k $\Omega$  is given as:

$$Rb = \frac{204}{V_{OUT} - 0.6} k\Omega$$

Where  $V_{OUT}$  is the output voltage. Rb should also be a 1% or better resistor.

## Input and Output Capacitor Selection

Low ESR MLC capacitors with X5R or X7R or equivalent dielectric should be used for input and output capacitors. Y5V or equivalent dielectrics lose too much capacitance with frequency, DC bias, and temperature. Therefore, they are not suitable for switch-mode DC-DC converter filtering, and must be avoided.

A 10  $\mu$ F, 10 V, 0805 MLC capacitor is needed on PVIN for all applications. A 1  $\mu$ F, 10 V, 0402 MLC capacitor on AVIN is needed for high frequency bypass to ensure clean chip supply for optimal performance.

A 47  $\mu$ F, 6.3 V, 1206 MLC capacitor is recommended on the output for most applications. The output ripple can be reduced by approximately 50% by using 2 x 22  $\mu$ F, 6.3V, 0805 MLC capacitors rather than 1 x 47  $\mu$ F.

As described in the Soft Start section, there is a limitation on the maximum bulk capacitance that can be placed on the output of this device. Please refer to that section for more details.



**Table 2. Recommended input and output capacitors**

|                        | Description                | MFG         | P/N                |
|------------------------|----------------------------|-------------|--------------------|
| <b>C<sub>IN</sub></b>  | 10μF, 10V, 10%, X5R, 0805  | Murata      | GRM21BR71A106KE51L |
|                        |                            | Taiyo Yuden | LMK212BJ106KG      |
|                        |                            | Panasonic   | ECJ-2FB1A106K      |
| <b>C<sub>OUT</sub></b> | 47μF, 6.3V, 20%, X5R, 1206 | Taiyo Yuden | JMK316BJ476ML      |
|                        |                            | Murata      | GRM31CR60J476ME19L |
|                        |                            | Kemet       | C1206C476M9PACTU   |

## POK Pull Up Resistor Selection

POK can be pulled up through a resistor to any voltage source as high as  $V_{IN}$ . The simplest way is to connect POK to the power input of the converter through a resistor. A 100 kΩ pull up resistor is typically recommended for most applications for minimal current drain from the voltage source and good noise immunity. POK can sink up to 5mA.

## Power-Up/Down Sequencing

During power-up, ENABLE should not be asserted before PVIN, and PVIN should not be asserted before AVIN. The PVIN should never be powered when AVIN is off. During power down, the AVIN should not be powered down before the PVIN. It is recommended to follow the power-up and power-down sequencing to ensure that the EN5322QI is always sufficiently powered before the device begins operation.

## Pre-Bias Start-up

The EN5322QI does not support startup into a pre-biased condition. Be sure the output capacitors are not charged or the output of the EN5322QI is not pre-biased when the EN5322QI is first enabled.

## LAYOUT RECOMMENDATIONS

**Recommendation 1:** Input and output filter capacitors should be placed on the same side of the PCB, and as close to the EN5322QI package as possible. They should be connected to the device with very short and wide traces. Do not use thermal reliefs or spokes when connecting the capacitor pads to the respective nodes. The +V and GND traces between the capacitors and the EN5322QI should be as close to each other as possible so that the gap between the two nodes is minimized, even under the capacitors.

**Recommendation 2:** The system ground plane should be the first layer immediately below the surface layer. This ground plane should be continuous and un-interrupted below the converter and the input/output capacitors.

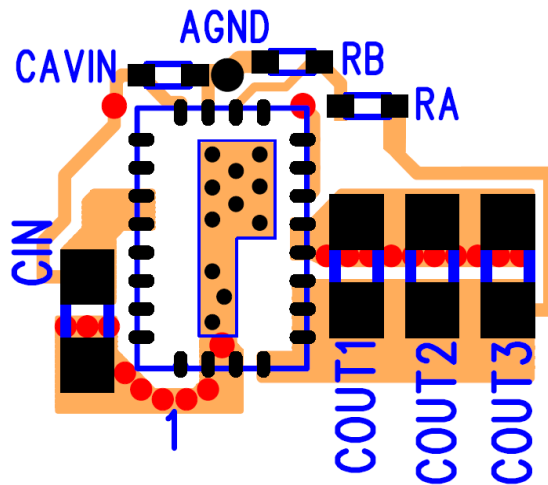


Figure 8. Optimized Layout Recommendations

**Recommendation 3:** The thermal pad underneath the component must be connected to the system ground plane through as many vias as possible. The drill diameter of the vias should be 0.33mm, and the vias must have at least 1 oz. copper plating on the inside wall, making the finished hole size around 0.20-0.26mm. Do not use thermal reliefs or spokes to connect the vias to the ground plane. This connection provides the path for heat dissipation from the converter.

**Recommendation 4:** Multiple small vias (the same size as the thermal via discussed in recommendation 3) should be used to connect ground terminal of the input capacitor and output capacitors to the system ground plane. It is preferred to put these vias along the edge of the GND copper closest to the +V copper. These vias connect the input/output filter capacitors to the GND plane, and help reduce parasitic inductances in the input and output current loops.

**Recommendation 5:** AVIN is the power supply for the small-signal control circuits. It should be connected to the input voltage at a quiet point. In Figure 8 this connection is made at the input capacitor. Connect a 1μF capacitor from the AVIN pin to AGND.

**Recommendation 6:** The layer 1 metal under the device must not be more than shown in Figure 7. See the section regarding exposed metal on bottom of package. As with any switch-mode DC-DC converter, try not to run sensitive signal or control lines underneath the converter package on other layers.

**Recommendation 7:** The  $V_{OUT}$  sense point should be just after the last output filter capacitor. Keep the sense trace short in order to avoid noise coupling into the node.

**Recommendation 8:** Keep  $R_A$ ,  $R_B$  close to the VFB pin (See Figures 8). The VFB pin is a high-impedance, sensitive node. Keep the trace to this pin as short as possible. Whenever possible, connect  $R_B$  directly to the AGND pin instead of going through the GND plane.

## DESIGN CONSIDERATIONS FOR LEAD-FRAME BASED MODULES

### Exposed Metal on Bottom of Package

QFN lead-frame based package technology utilizes exposed metal pads on the bottom of the package that provide improved thermal dissipation and low package thermal resistance, smaller package footprint and thickness, large lead size and pitch, and excellent lead co-planarity. As the EN5322QI package is a fully integrated module consisting of multiple internal devices, the lead-frame provides circuit interconnection and mechanical support of these devices resulting in multiple exposed metal pads on the package bottom.

Only the two large thermal pads and the perimeter leads are to be mechanically/electrically connected to the PCB through a SMT soldering process. All other exposed metal is to remain free of any interconnection to the PCB. Figure 8 shows the recommended PCB metal layout for the EN5322QI package. A GND pad with a solder mask "bridge" to separate into two pads and 24 signal pads are to be used to match the metal on the package. The PCB should be clear of any other metal, including traces, vias, etc., under the package to avoid electrical shorting.

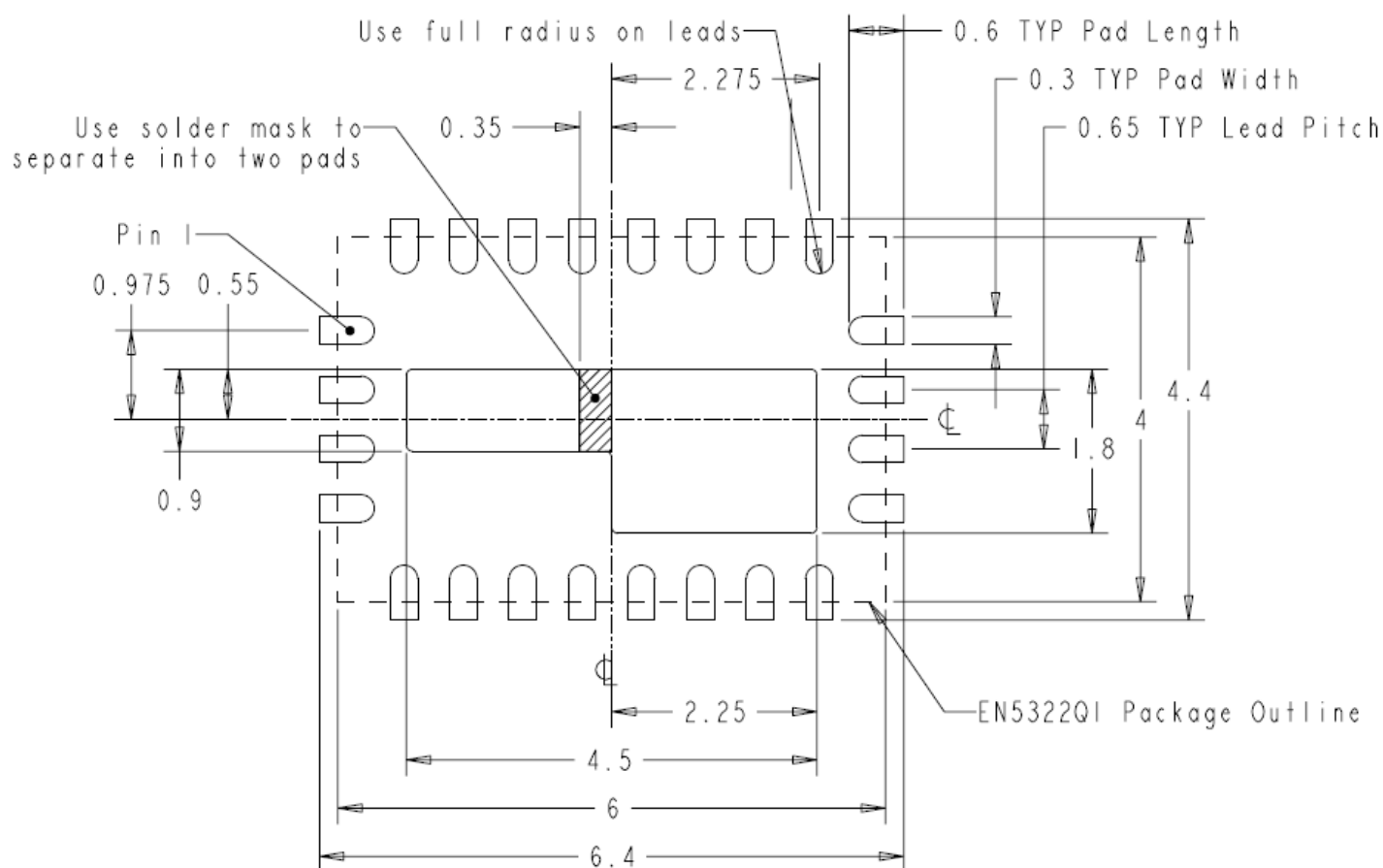
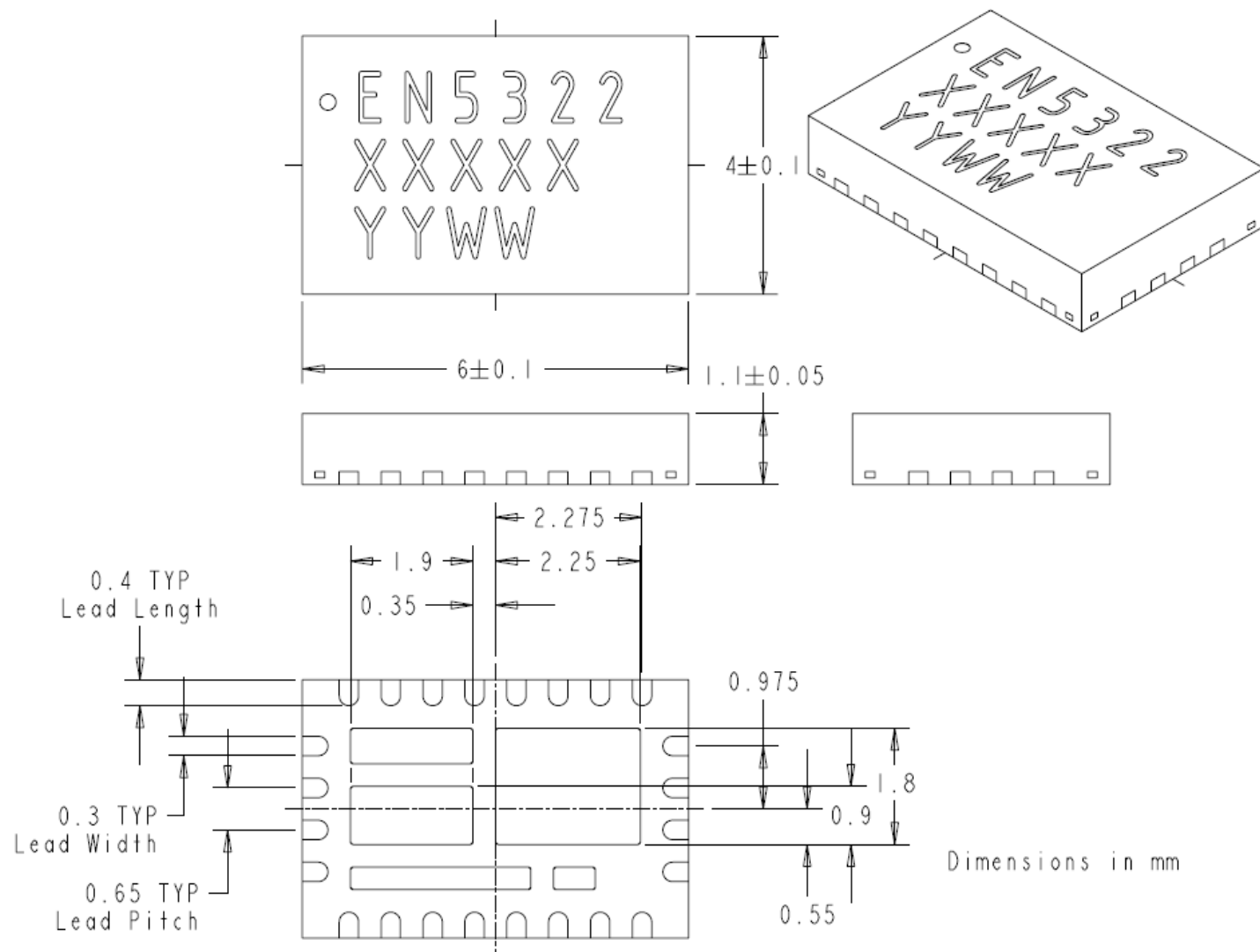


Figure 9. Recommended Footprint for PCB

## PACKAGE DIMENSIONS



**Figure 10. Package mechanical dimensions.**

## REVISION HISTORY

| Rev | Date        | Change(s)                                                                                                                                                                                               |
|-----|-------------|---------------------------------------------------------------------------------------------------------------------------------------------------------------------------------------------------------|
| G   | Feb. 2014   | <ul style="list-style-type: none"> <li>ENABLE functional description has been rewritten and updated to include delay circuit.</li> </ul>                                                                |
| H   | Feb. 2014   | <ul style="list-style-type: none"> <li>Updated Typical Application Circuits to show that ENABLE is best toggled after PVIN is stable.</li> <li>Updated Power Up/Down Sequencing description.</li> </ul> |
| I   | March. 2019 | <ul style="list-style-type: none"> <li>Changed datasheet into Intel format.</li> </ul>                                                                                                                  |

## WHERE TO GET MORE INFORMATION

For more information about Intel® and Enpirion® PowerSoCs, visit:

[www.Intel.com/enpirion](http://www.Intel.com/enpirion)

# Mouser Electronics

Authorized Distributor

Click to View Pricing, Inventory, Delivery & Lifecycle Information:

[Altera:](#)

[EVB-EN5322QI](#)