

Signal Chain Power Series LTC3114-1 Buck-Boost Converter

DESCRIPTION

Demonstration circuit SCP-LTC3114-1-EVALZ features the LTC3114-1, a wide operating range, synchronous monolithic buck-boost converter with programmable average output current. The circuit operates with a 2.2V to 40V input voltage range.

Like all boards in the Signal Chain Power series, this board is designed to be easily plugged into other SCP boards to form a complete signal chain power system, enabling fast evaluation of low power signal chains. To evaluate this board, some universal SCP hardware is required, namely:

SCP-INPUT-EVALZ	SCP-1X2BKOUT-EVALZ
SCP-OUTPUT-EVALZ	SCP-1X5BKOUT-EVALZ
SCP-FILTER-EVALZ	SCP-5X1-EVALZ
SCP-THRUBRD-EVALZ	

To properly evaluate SCP series demo boards, you will need the SCP Configurator companion software. SCP Configurator can help you choose the right board and topology for your design.

Note that this Demo Manual does not cover details important to the operation and configuration regarding the [LTC3114-1](#). Please refer to the [LTC3114-1 datasheet](#) for a complete description of the part.

Design files for this circuit board are available.

All registered trademarks and trademarks are property of their respective owners.

Table 1. Performance Summary

SYMBOL	PARAMETER	NOTES	MIN	TYP	MAX	UNITS
$V_{IN(MAX)}$	Max Input Voltage				40	V
$V_{OUT(MAX)}$	Max Output Voltage	Output capacitor rating limited. Replace for higher V_{OUT} .			40	V
$I_L(LIM)$	Inductor Current Limit		1.3	1.7	2.3	A

BOARD IMAGE

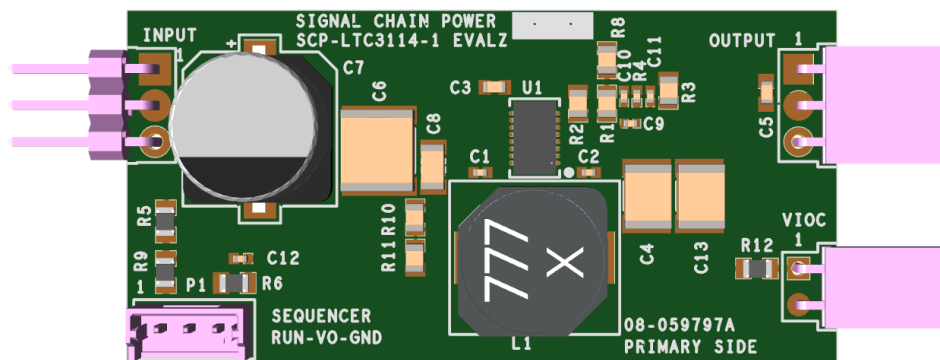


Figure 1. SCP-LTC3114-1-EVALZ Evaluation Board

QUICK START PROCEDURE

Demonstration circuit SCP-LTC3114-1-EVALZ is easy to set up to evaluate the performance of any SCP hardware configuration.

1. The SCP-LTC3114-1-BB-EVALZ ships with a default output voltage of 5V. To change the output voltage, see “Configuration Settings” section, and modify the board accordingly. Be sure to check for open connections or solder shorts after making any modifications.
2. Connect the SCP-INPUT-EVALZ and SCP-OUTPUT-EVALZ boards to the SCP-LTC3114-1-BB-EVALZ (refer to Figure 2) and connect the input board to a voltage source, V_{SOURCE} . Connect the output board to a voltmeter or dynamic load. Slowly raise the input voltage until the SCP-LTC3114-1-BB-EVALZ powers up into regulation and sweep V_{SOURCE} through the desired range of operation.

NOTE: Make sure that the input voltage is always within specification. If using a dynamic load to measure output voltage, make sure the load is initially set to zero.

3. Check for proper output voltage. The output should be regulated at the programmed value ($\pm 5\%$).
4. Once the proper output voltage is established, power off V_{SOURCE} and similarly test other boards in the SCP system until all elements have been individually verified prior to assembling into the final circuit configuration.

NOTE: When measuring the input or output voltage ripple, use the optional SMA connector locations available on the input, output, 1 \times 5, 1 \times 2, and 5 \times 1 breakout boards. Avoid using the test point connections with long scope leads.

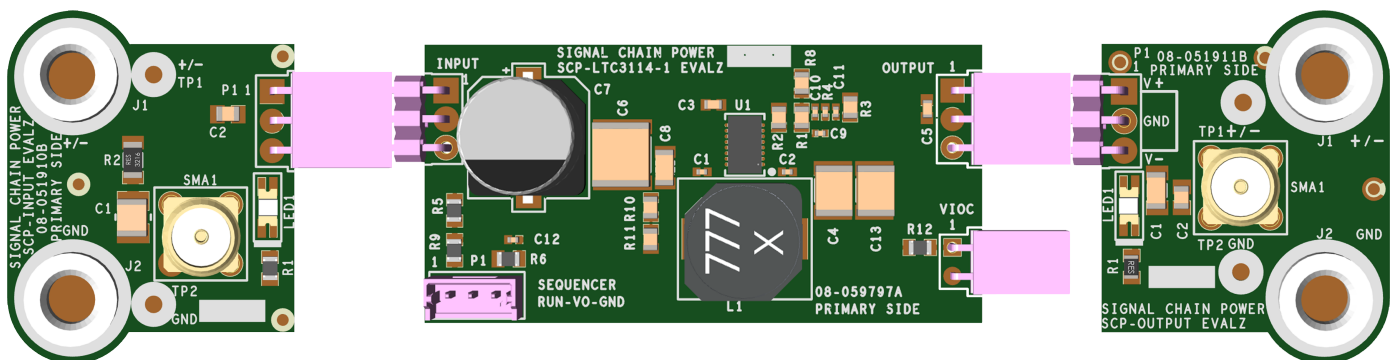


Figure 2. Proper Measurement Equipment Setup (Use SMA connectors for Measuring Input or Output Ripple)

CONFIGURATION SETTINGS

Demonstration circuit SCP-LTC3114-1-EVALZ features the LTC3114-1, a wide operating range, synchronous monolithic buck-boost converter with programmable average output current. The circuit operates with a 2.2V to 40V input voltage range.

The output of the SCP-LTC3114-1-EVALZ is resistor-programmable from 3.0V to 40V. The board can be also configured to drive VIOC-capable linear regulators.

OUTPUT VOLTAGE PROGRAMMING

$$V_{OUT} = 1.0V \left(1 + \frac{R_1}{R_2} \right)$$

Table 2. Resistor Selection Guide for Common Output Voltages

V _{OUT} (V)	R ₁ (Ω)	R ₂ (Ω)
3.0	2M	1M
5.0	2M	499k
6.0	2M	402k
7.0	2M	332k
8.0	2M	287k
9.0	2M	249k
10.0	2M	221k
11.0	2M	200k
12.0	2M	182k
13.0	2M	165k
14.0	2M	154k
15.0	2M	143k
16.0	2M	133k
17.0	2M	124k
18.0	2M	118k
19.0	2M	110k
20.0	2M	105k
21.0	2M	100k
22.0	2M	95.3k
23.0	2M	90.9k
24.0	2M	86.6k
25.0 (Note 1)	2M	82.5k
30.0 (Note 1)	2M	69.8k
35.0 (Note 1)	2M	59k
40.0 (Note 1)	2M	51.1k

Note 1. Output capacitor rating limited. Replace for higher V_{OUT}.

RUN PIN CONFIGURATION

The RUN pin is tied to the optional SCP Run/Sequence header P1. To create a harness for this function, use Molex part 0510650300 with crimp pin 50212-8000.

To use an active run signal, use a 1.00MΩ for either pull-up or pull-down resistors R5 and R6, short R9 with 0Ω, and use the drive signal from connector P1.

VOLTAGE INPUT-TO-OUTPUT CONTROL (VIOC) IMPLEMENTATION

To implement the VIOC function for this regulator, set R₁₂ to 0Ω. Refer to the “Configuration Settings” section in the Demo Manual for the low-dropout (LDO) linear regulator board and use the following configuration for this board.

Table 3. VIOC Cross-Reference Designators

VIOC SETTING REFERENCES	R _{BOT}	R _{TOP}	R _{MAX}
V _{OUT} Reference Designators	R2	R1	R8

$$V_{LDIN} - V_{LDOUT} = V_{VIOC} = 1.0V \left(\frac{R_{BOT} + R_{TOP}}{R_{BOT}} \right)$$

$$V_{(MAX)LDIN} = 1.0V \left(\frac{R_{BOT} + R_{TOP} + R_{MAX}}{R_{BOT}} \right) + I_{SINK} R_{MAX}$$

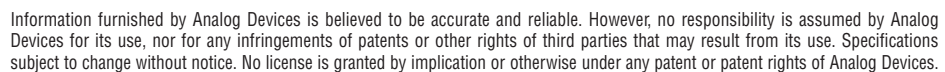
I_{SINK} is the current through R_{MAX}, typically 15μA, so R_{BOT} should be sized such that the divider current runs a minimum of 100μA to minimize the I_{SINK} error term.

DEMO MANUAL SCP-LTC3114-1-EVALZ

PARTS LIST

ITEM	QTY	REFERENCE	PART DESCRIPTION	MANUFACTURER/PART NUMBER
1	1	PCB	PRINTED CIRCUIT BOARD	ANALOG DEVICES 08_059797a
2	2	C1, C2	CAP CER 68NF 16V 10% X7R 0402	SAMSUNG CL05B683K05NNNC
3	1	C10	CAP CER COG, FOR COMMERCIAL APP	VISHAY VJ0402A100JXAP54
4	1	C11	CAP MONO CER CHIP FOR AUTOMOTIVE, X7R	MURATA GCM155R71E473KA55D
5	1	C12	CAP MLCC 0402 (Note 2)	N/A
6	2	C4, C13	CAP CER 22UF 25V 20% X7R 1812	TDK C4532X7R1E226M250KC
7	2	C14, C15	CAP MLCC 0402 (Note 2)	N/A
8	1	C3	CAP CER X7R	SAMSUNG CL10B475KQ8NQNC
9	1	C5	CAP CER X5R, GENERAL PURPOSE	AVX CORPORATION 06033D105KAT2A
10	1	C6	CAP CER CHIP X7R	TDK C5750X7R1H106M
11	1	C7	CAP ELECTROLYTIC (Note 2)	N/A
12	1	C8	CAP CER X7R	AVX 12065C105KAT2A
13	1	C9	CAP CER 4700PF 25V 10% X7R 0402	SAMSUNG CL05B472KA5NNNC
14	1	D1	DIODE LOW VF MEGA SCHOTTKY BARR RECT	NXP SEMICONDUCTORS PMEG2010AEH,115
15	1	D2	DIO SCHOTTKY BARRIER RECTIFIER, 2A	NEXPERIA PMEG6020ER
16	1	INPUT	CONN-PCB MALE HEADER 3POS 2.54MM PITCH R/A GOLD	SULLINS PBC03SBAN
17	1	L1	IND SHIELDED POWER 0.01630HM DCR, 6.01A	COILCRAFT INC. MSS1048-682NLB
18	1	OUTPUT	CONN FEMALE 3POS 2.54MM PITCH R/A GOLD	SULLINS PPC031LGBN-RC
19	1	P1	CONN-PCB 3POS HEADER WIRE TO BRD WAFER ASSY STRAIGHT 2MM PITCH	MOLEX 53253-0370
20	1	R1	RES SMD 2M OHM 1% 1/8W 0805	YAGEO RC0805FR-072ML
21	1	R10	RES STANDARD THICK FILM CHIP JUMPER, FOR AUTOMOTIVE	VISHAY CRCW08050000Z0EA
22	4	R6, R9, R11, R12	RES THICK FILM 0805 (Note 2)	N/A
23	1	R2	RES PRECISION THICK FILM CHIP	PANASONIC ERJ-6ENF4993V
24	1	R3	RES PRECISION THICK FILM CHIP	PANASONIC ERJ-6ENF1002V
25	1	R4	RES PRECISION THICK FILM CHIP	PANASONIC ERJ-2RKF2742X
26	1	R5	RES THICK FILM CHIP, GENERAL PURPOSE	YAGEO RC0805JR-071ML
27	1	R7	RES THICK FILM 0402 (Note 2)	N/A
28	1	R8	RES PRECISION THICK FILM CHIP	PANASONIC ERJ-6ENF49R9V
29	1	U1	IC-ADI 40V, 1A SYNCHRONOUS BUCK-BOOST DC/DC CONVERTER WITH PROGRAMMABLE OUTPUT CURRENT	ANALOG DEVICES LTC3114MPDHC-1#PBF
30	1	VI0C	CONN FEMALE 2POS 2.54MM PITCH R/A GOLD	SULLINS PPC021LGBN-RC

Note 2. These items are not stuffed (DNI).



DEMO MANUAL SCP-LTC3114-1-EVALZ



ESD Caution

ESD (electrostatic discharge) sensitive device. Charged devices and circuit boards can discharge without detection. Although this product features patented or proprietary protection circuitry, damage may occur on devices subjected to high energy ESD. Therefore, proper ESD precautions should be taken to avoid performance degradation or loss of functionality.

Legal Terms and Conditions

By using the evaluation board discussed herein (together with any tools, components documentation or support materials, the "Evaluation Board"), you are agreeing to be bound by the terms and conditions set forth below ("Agreement") unless you have purchased the Evaluation Board, in which case the Analog Devices Standard Terms and Conditions of Sale shall govern. Do not use the Evaluation Board until you have read and agreed to the Agreement. Your use of the Evaluation Board shall signify your acceptance of the Agreement. This Agreement is made by and between you ("Customer") and Analog Devices, Inc. ("ADI"), with its principal place of business at One Technology Way, Norwood, MA 02062, USA. Subject to the terms and conditions of the Agreement, ADI hereby grants to Customer a free, limited, personal, temporary, non-exclusive, non-sublicensable, non-transferable license to use the Evaluation Board FOR EVALUATION PURPOSES ONLY. Customer understands and agrees that the Evaluation Board is provided for the sole and exclusive purpose referenced above, and agrees not to use the Evaluation Board for any other purpose. Furthermore, the license granted is expressly made subject to the following additional limitations: Customer shall not (i) rent, lease, display, sell, transfer, assign, sublicense, or distribute the Evaluation Board; and (ii) permit any Third Party to access the Evaluation Board. As used herein, the term "Third Party" includes any entity other than ADI, Customer, their employees, affiliates and in-house consultants. The Evaluation Board is NOT sold to Customer; all rights not expressly granted herein, including ownership of the Evaluation Board, are reserved by ADI. CONFIDENTIALITY. This Agreement and the Evaluation Board shall all be considered the confidential and proprietary information of ADI. Customer may not disclose or transfer any portion of the Evaluation Board to any other party for any reason. Upon discontinuation of use of the Evaluation Board or termination of this Agreement, Customer agrees to promptly return the Evaluation Board to ADI. ADDITIONAL RESTRICTIONS. Customer may not disassemble, decompile or reverse engineer chips on the Evaluation Board. Customer shall inform ADI of any occurred damages or any modifications or alterations it makes to the Evaluation Board, including but not limited to soldering or any other activity that affects the material content of the Evaluation Board. Modifications to the Evaluation Board must comply with applicable law, including but not limited to the RoHS Directive. TERMINATION. ADI may terminate this Agreement at any time upon giving written notice to Customer. Customer agrees to return to ADI the Evaluation Board at that time. LIMITATION OF LIABILITY. THE EVALUATION BOARD PROVIDED HEREUNDER IS PROVIDED "AS IS" AND ADI MAKES NO WARRANTIES OR REPRESENTATIONS OF ANY KIND WITH RESPECT TO IT. ADI SPECIFICALLY DISCLAIMS ANY REPRESENTATIONS, ENDORSEMENTS, GUARANTEES, OR WARRANTIES, EXPRESS OR IMPLIED, RELATED TO THE EVALUATION BOARD INCLUDING, BUT NOT LIMITED TO, THE IMPLIED WARRANTY OF MERCHANTABILITY, TITLE, FITNESS FOR A PARTICULAR PURPOSE OR NON-INFRINGEMENT OF INTELLECTUAL PROPERTY RIGHTS. IN NO EVENT WILL ADI AND ITS LICENSORS BE LIABLE FOR ANY INCIDENTAL, SPECIAL, INDIRECT, OR CONSEQUENTIAL DAMAGES RESULTING FROM CUSTOMER'S POSSESSION OR USE OF THE EVALUATION BOARD, INCLUDING BUT NOT LIMITED TO LOST PROFITS, DELAY COSTS, LABOR COSTS OR LOSS OF GOODWILL. ADI'S TOTAL LIABILITY FROM ANY AND ALL CAUSES SHALL BE LIMITED TO THE AMOUNT OF ONE HUNDRED US DOLLARS (\$100.00). EXPORT. Customer agrees that it will not directly or indirectly export the Evaluation Board to another country, and that it will comply with all applicable United States federal laws and regulations relating to exports. GOVERNING LAW. This Agreement shall be governed by and construed in accordance with the substantive laws of the Commonwealth of Massachusetts (excluding conflict of law rules). Any legal action regarding this Agreement will be heard in the state or federal courts having jurisdiction in Suffolk County, Massachusetts, and Customer hereby submits to the personal jurisdiction and venue of such courts. The United Nations Convention on Contracts for the International Sale of Goods shall not apply to this Agreement and is expressly disclaimed.

Mouser Electronics

Authorized Distributor

Click to View Pricing, Inventory, Delivery & Lifecycle Information:

[Analog Devices Inc.:](#)

[SCP-LTC3114-1-EVALZ](#)