

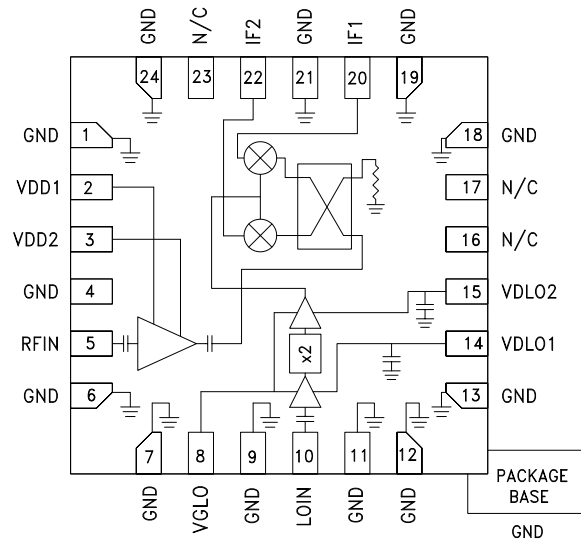


## Typical Applications

The HMC1065LP4E is ideal for:

- Point-to-Point and Point-to-Multi-Point Radios
- Satellite Communications
- Sensors

## Functional Diagram



## Electrical Specifications,

$T_A = +25^\circ\text{C}$ ,  $IF = 2000\text{ MHz}$ ,  $LO = +2\text{ dBm}$ ,  $VDLO1 = VDLO2 = 3\text{ V}$ ,  $VDD1 = VDD2 = 3\text{ V}$ ,  $USB$  [1]

Parameter	Min.	Typ.	Max.	Units
RF Frequency Range	27		34	GHz
LO Frequency Range	11.5		19	GHz
IF Frequency Range	DC		4	GHz
LO Drive Range	-4		+4	dBm
Conversion Gain	9	12		dB
Noise Figure		3		dB
Image Rejection	12	17		dBc
Input Power for 1 dB Compression (P1dB)		-9		dBm
Input Third-Order Intercept (IIP3)		-2		dBm
Output Third-Order Intercept (OIP3)		14		dBm
2x LO / RF Isolation	35	45		dB
2x LO / IF Isolation		20		dB
Amplitude Balance [2]		-1		dB
Phase Balance [2]		7		deg
Supply Current (IDLO) [3]		150		mA
Supply Current (IDD)		90		mA

[1] All measurements performed with upper sideband selected and external  $90^\circ$  hybrid at the IF ports, unless otherwise noted.

[2] Data taken without external  $90^\circ$  hybrid,  $IF = 1000\text{ MHz}$ .

[3] Adjust VGL01 and VGL02 between -2 V and 0 V to achieve total quiescent current ( $IDLO1 + IDLO2$ ) = 150 mA.

## Features

Conversion Gain: 13 dB

Image Rejection: 17 dBc

Input Third-Order Intercept (IP3): -2 dBm

LO Drive Range: -4 dBm to +4 dBm

24 Lead 4 mm x 4 mm SMT Package

## General Description

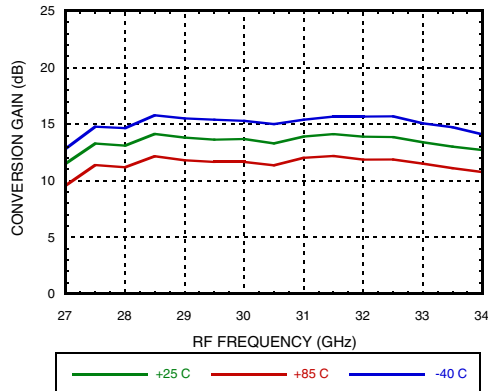
The HMC1065LP4E is a compact GaAs MMIC Image Reject Low Noise Converter in a leadless RoHS compliant SMT package. This device provides a small signal conversion gain of 13 dB with 17 dBc of image rejection and 2 dBm of Input IP3. The HMC1065LP4E utilizes an RF LNA followed by an I/Q mixer which is driven by an active x2 multiplier. IF1 and IF2 mixer outputs are provided and an external  $90^\circ$  hybrid is needed to select the required sideband. The I/Q mixer topology reduces the need for filtering of the unwanted sideband. The HMC1065LP4E is a much smaller alternative to hybrid style image reject downconverter assemblies and it eliminates the need for wire bonding by allowing the use of surface mount manufacturing techniques.



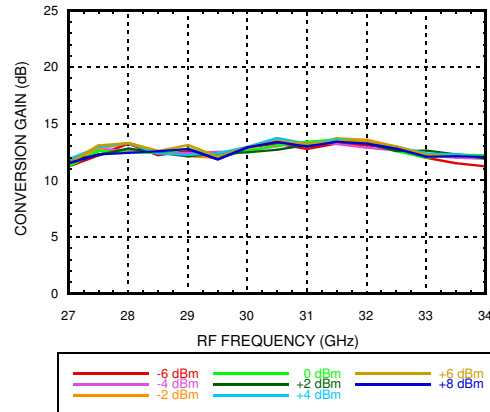
**GaAs MMIC I/Q DOWNCONVERTER**  
**27 - 34 GHz**

**Data Taken as SSB Downconverter with External IF 90° Hybrid, IF = 2000 MHz**

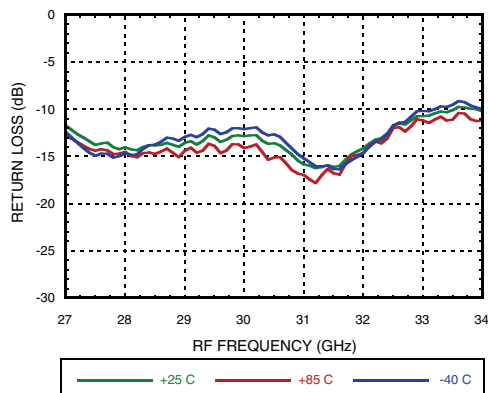
**Conversion Gain vs. Temperature, USB**



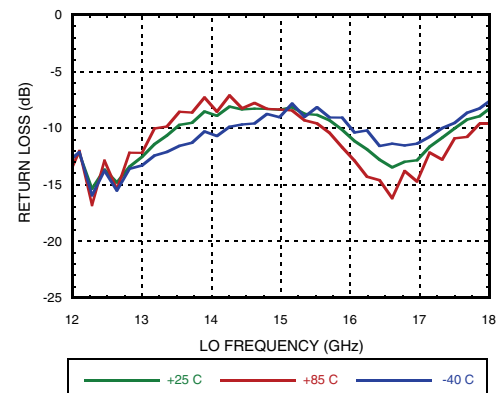
**Conversion Gain vs. LO Drive, USB**



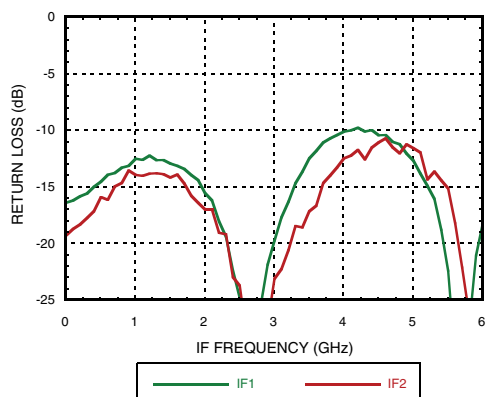
**RF Return Loss vs. Temperature**



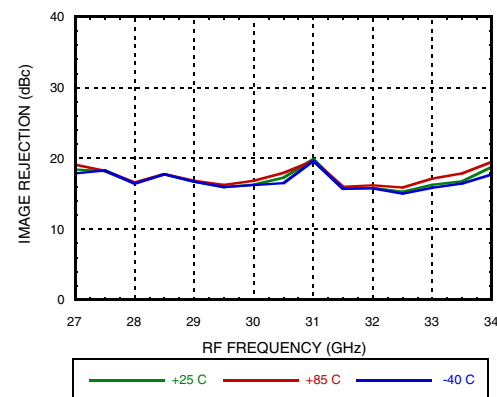
**LO Return Loss vs. Temperature**



**IF Return Loss <sup>[1]</sup>**



**Image Rejection vs. Temperature, USB**



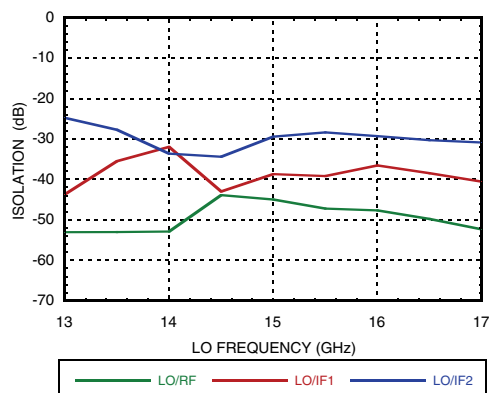
[1] Data taken without external IF 90° hybrid



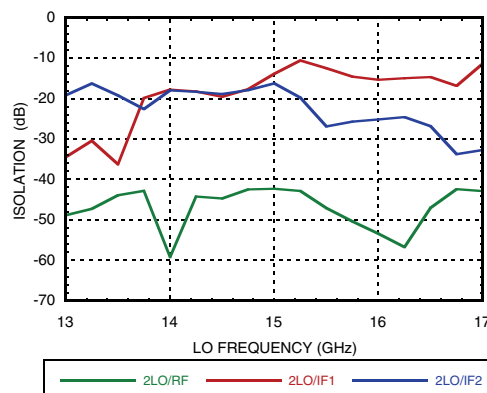
# GaAs MMIC I/Q DOWNCONVERTER 27 - 34 GHz

Data Taken as SSB Downconverter with External IF 90° Hybrid, IF = 2000 MHz

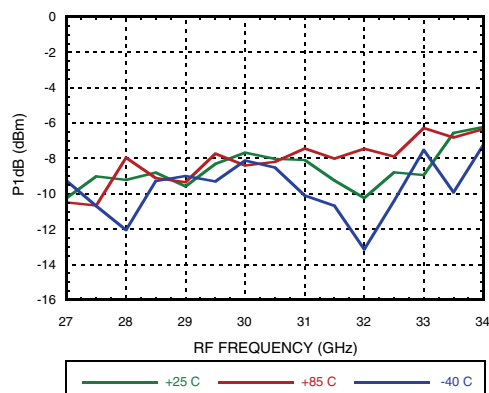
LO Isolation <sup>[1]</sup>



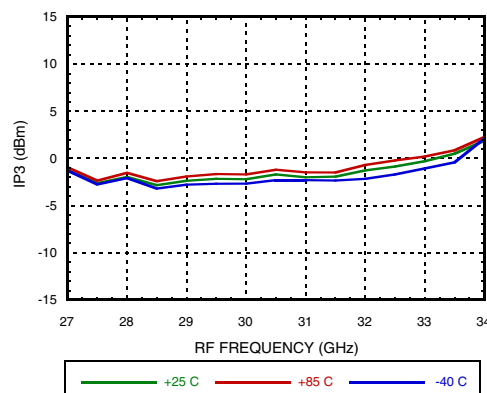
2x LO Isolation <sup>[1]</sup>



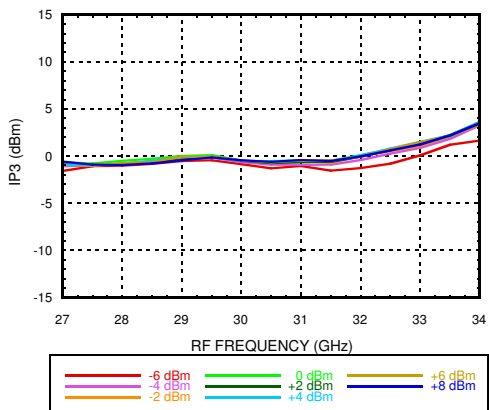
Input P1dB vs. Temperature, USB



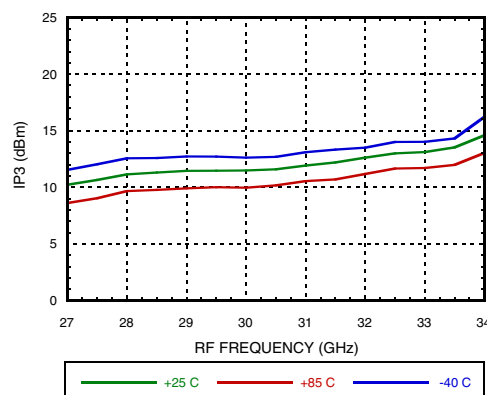
Input IP3 vs. Temperature, USB



Input IP3 vs. LO Drive, USB



Output IP3 vs. Temperature, USB



[1] Data taken without external IF 90° hybrid

Information furnished by Analog Devices is believed to be accurate and reliable. However, no responsibility is assumed by Analog Devices for its use, nor for any infringements of patents or other rights of third parties that may result from its use. Specifications subject to change without notice. No license is granted by implication or otherwise under any patent or patent rights of Analog Devices. Trademarks and registered trademarks are the property of their respective owners.

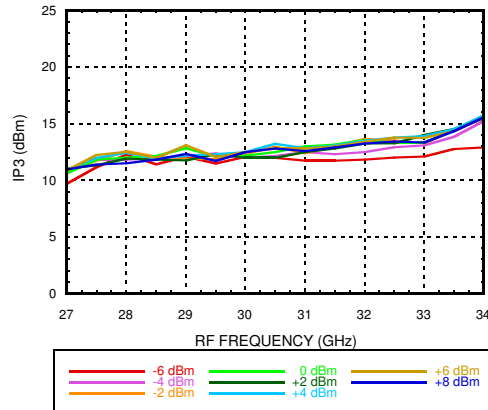
For price, delivery, and to place orders: Analog Devices, Inc., One Technology Way, P.O. Box 9106, Norwood, MA 02062-9106 Phone: 781-329-4700 • Order online at [www.analog.com](http://www.analog.com) Application Support: Phone: 1-800-ANALOG-D



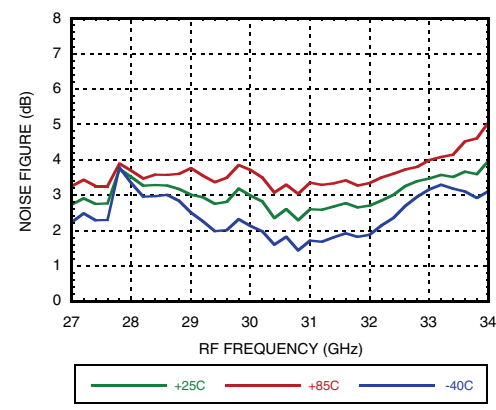
**GaAs MMIC I/Q DOWNCONVERTER**  
**27 - 34 GHz**

**Data Taken as SSB Downconverter with External IF 90° Hybrid, IF = 2000 MHz**

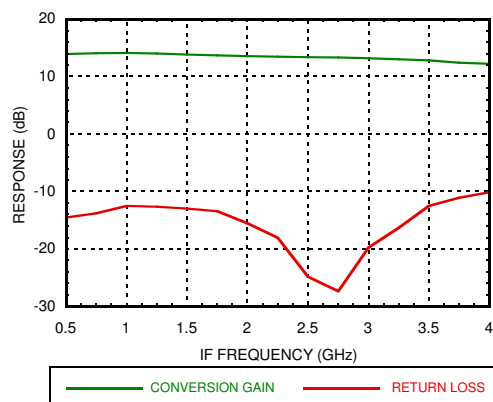
**Output IP3 vs. LO Drive, USB**



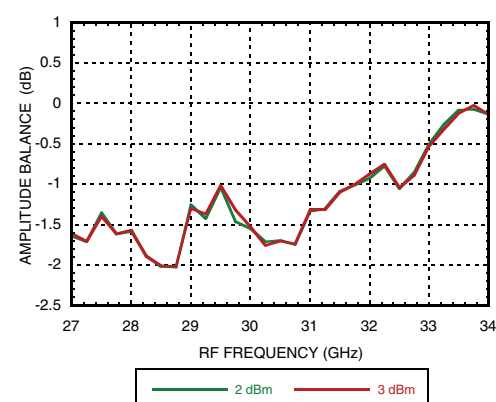
**Noise Figure vs. Temperature, USB**



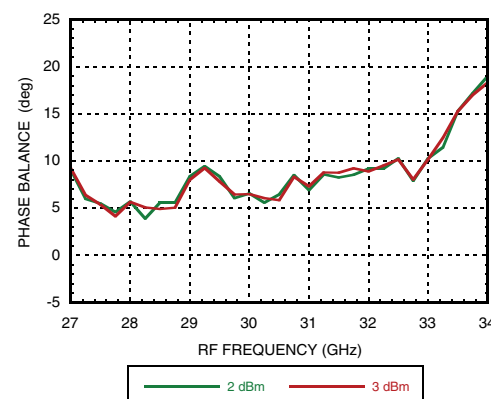
**IF Bandwidth <sup>[1]</sup>**



**Amplitude Balance vs. LO Drive <sup>[1] [2]</sup>**



**Phase Balance vs. LO Drive <sup>[1] [2]</sup>**



[1] Data taken without external 90° hybrid.

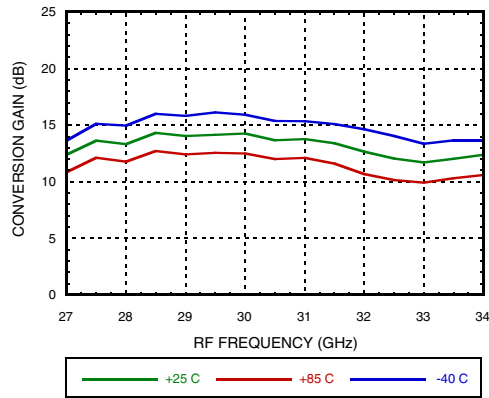
[2] Data taken with IF = 1000MHz.



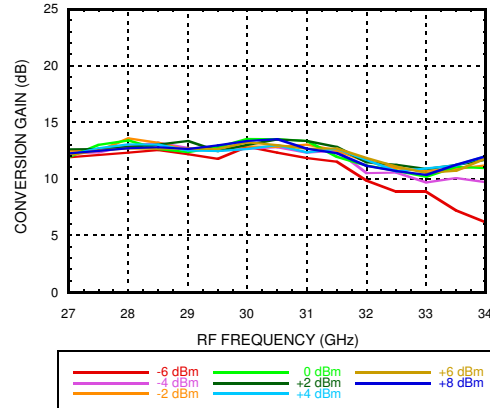
**GaAs MMIC I/Q DOWNCONVERTER  
27 - 34 GHz**

**Data Taken as SSB Downconverter with External IF 90° Hybrid, IF = 2000 MHz**

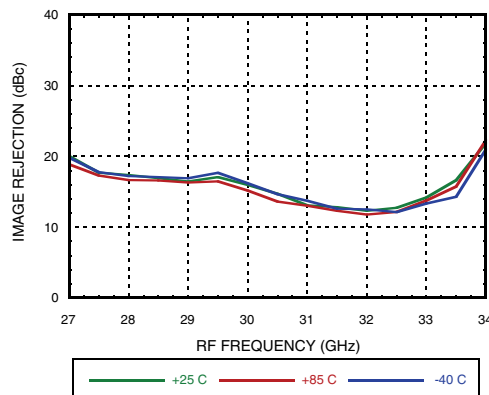
**Conversion Gain vs. Temperature, LSB**



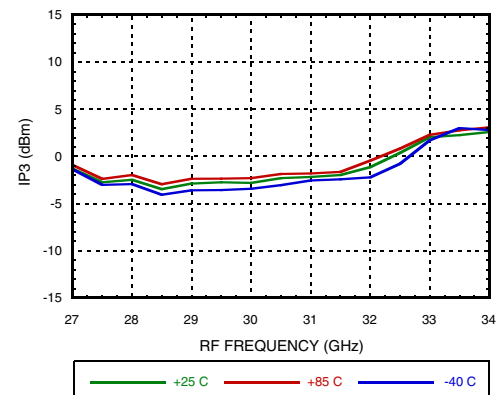
**Conversion Gain vs. LO Drive, LSB**



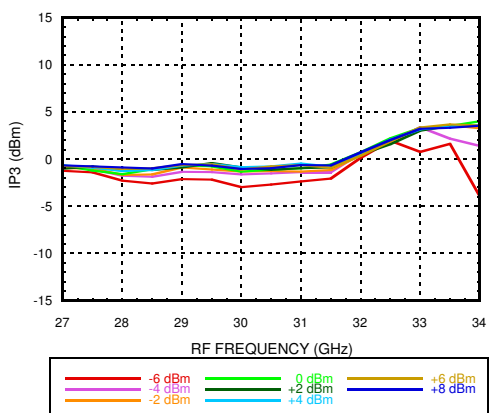
**Image Rejection vs. Temperature, LSB**



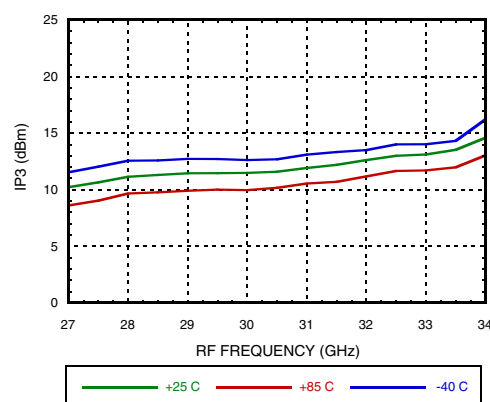
**Input IP3 vs. Temperature, LSB**



**Input IP3 vs. LO Drive, LSB**



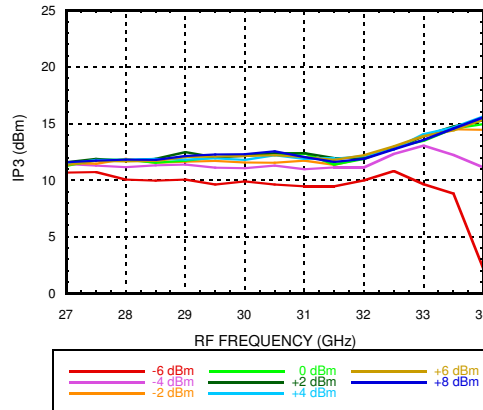
**Output IP3 vs. Temperature, LSB**



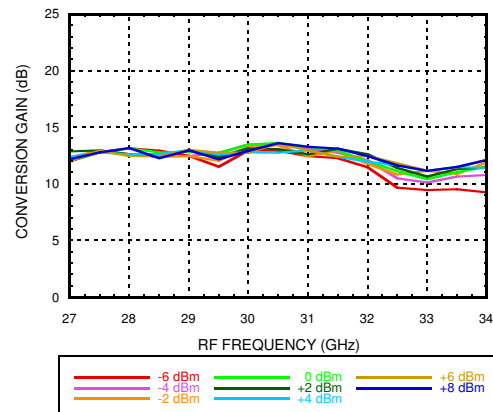
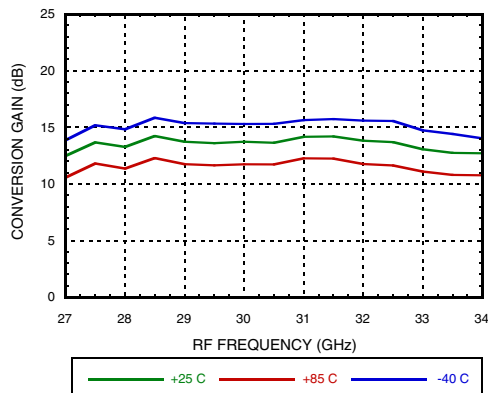


**GaAs MMIC I/Q DOWNCONVERTER**  
**27 - 34 GHz**

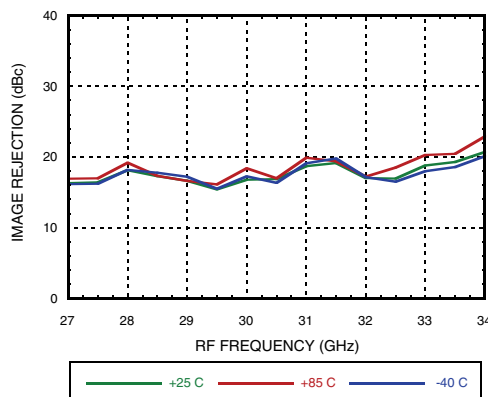
**Data Taken as SSB Downconverter with External IF 90° Hybrid, IF = 2000 MHz**  
**Output IP3 vs. LO Drive, LSB**



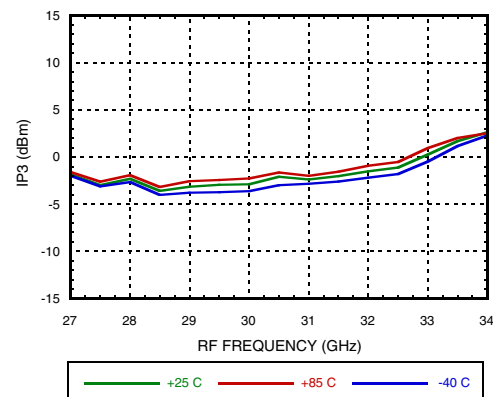
**Data Taken as SSB Downconverter with External IF 90° Hybrid, IF = 1000 MHz**  
**Conversion Gain vs. Temperature, USB**      **Conversion Gain vs. LO Drive, USB**



**Image Rejection vs. Temperature, USB**



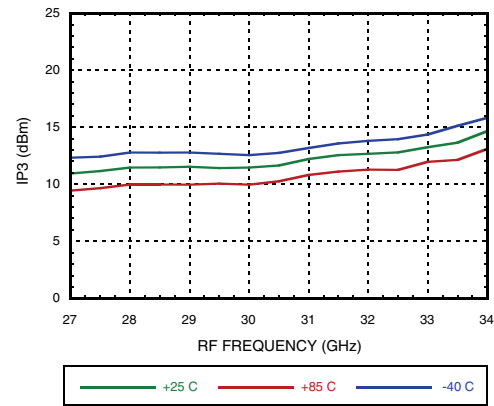
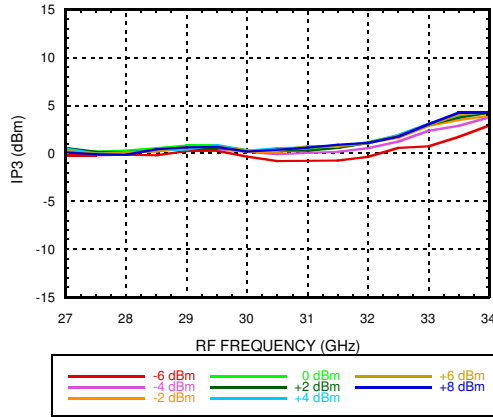
**Input IP3 vs. Temperature, USB**



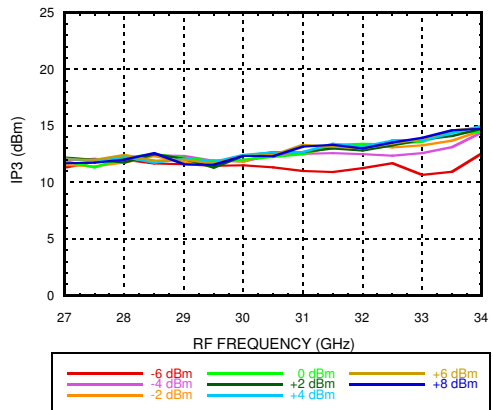


**GaAs MMIC I/Q DOWNCONVERTER  
27 - 34 GHz**

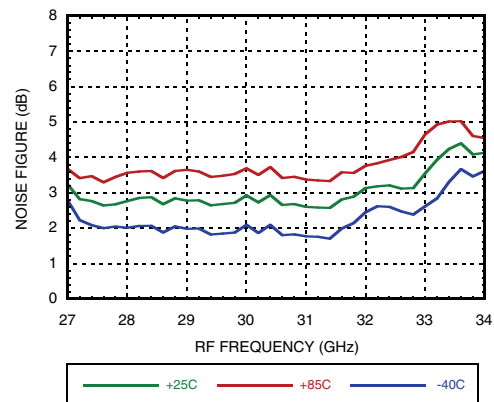
**Data Taken as SSB Downconverter with External IF 90° Hybrid, IF = 1000 MHz**  
**Input IP3 vs. LO Drive, USB**      **Output IP3 vs. Temperature, USB**



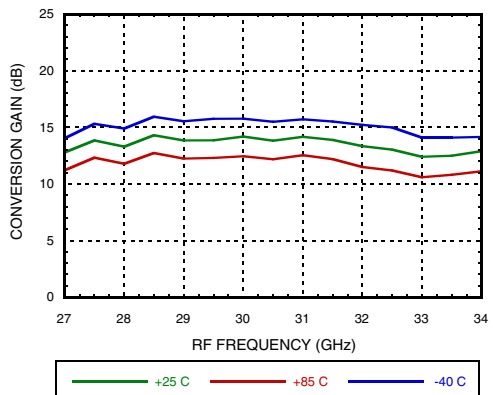
**Output IP3 vs. LO Drive, USB**



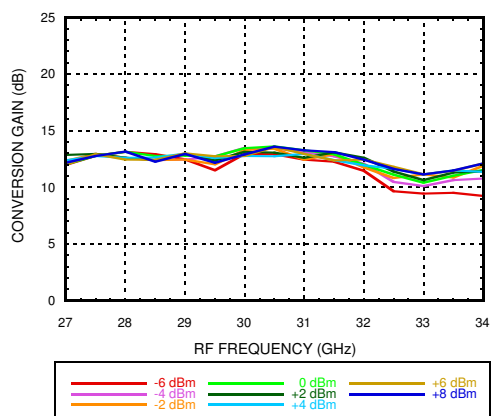
**Noise Figure vs. Temperature, USB**



**Conversion Gain vs. Temperature, LSB**



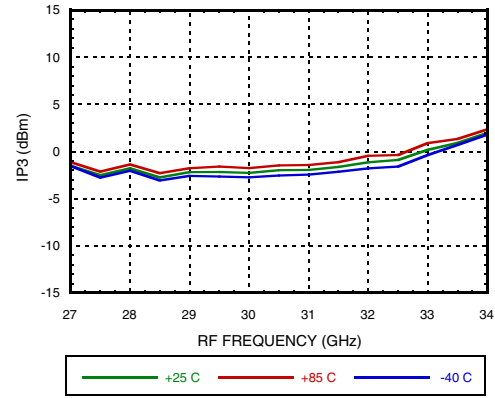
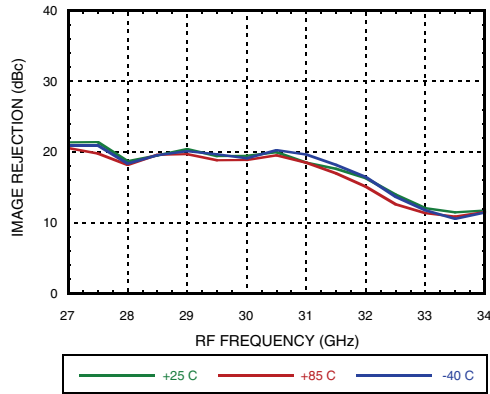
**Conversion Gain vs. LO Drive, LSB**



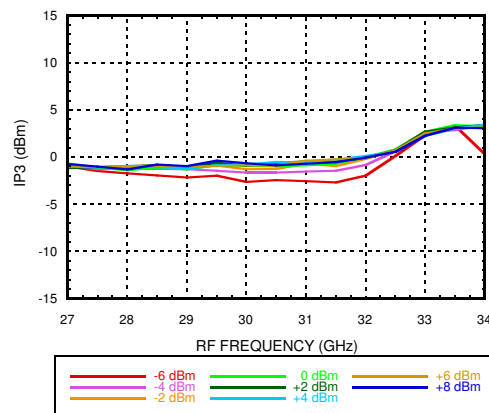


**GaAs MMIC I/Q DOWNCONVERTER**  
**27 - 34 GHz**

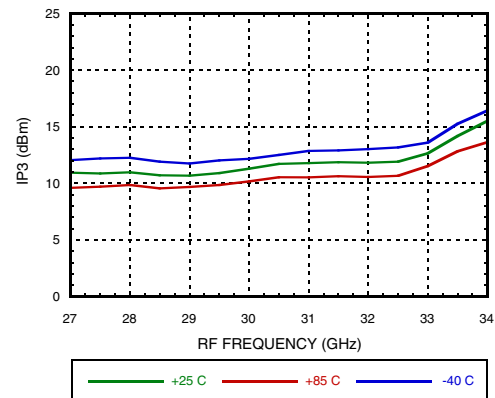
**Data Taken as SSB Downconverter with External IF 90° Hybrid, IF = 1000 MHz**  
**Image Rejection vs. Temperature, LSB**      **Input IP3 vs. Temperature, LSB**



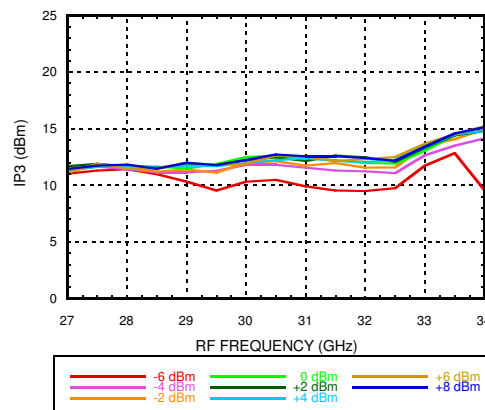
**Input IP3 vs. LO Drive LSB**



**Output IP3 vs. Temperature, LSB**



**Output IP3 vs. LO Drive, LSB**



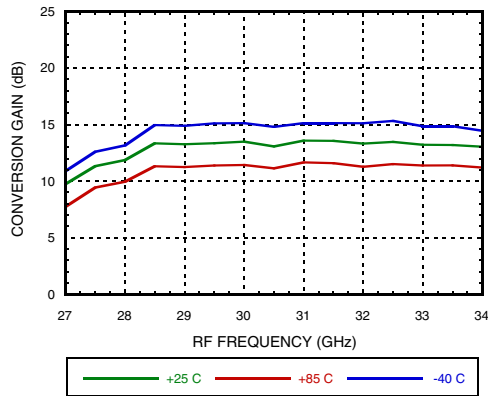




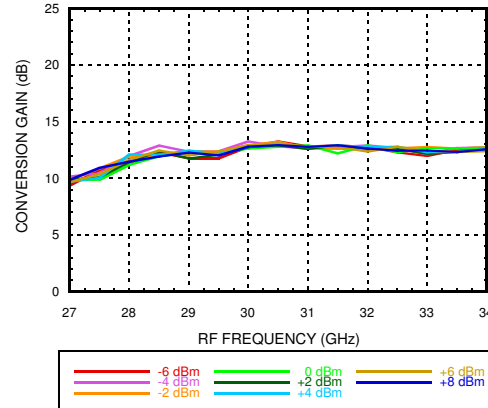
**GaAs MMIC I/Q DOWNCONVERTER  
27 - 34 GHz**

**Data Taken as SSB Downconverter with External IF 90° Hybrid, IF = 3300 MHz**

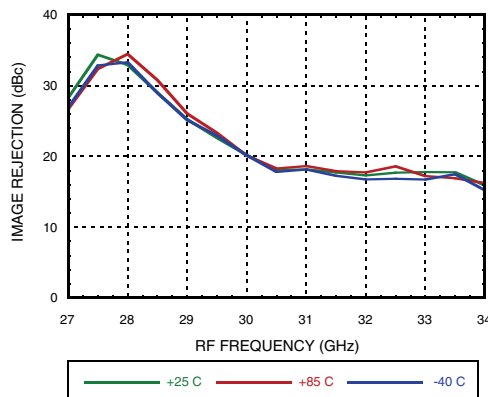
**Conversion Gain vs. Temperature, USB**



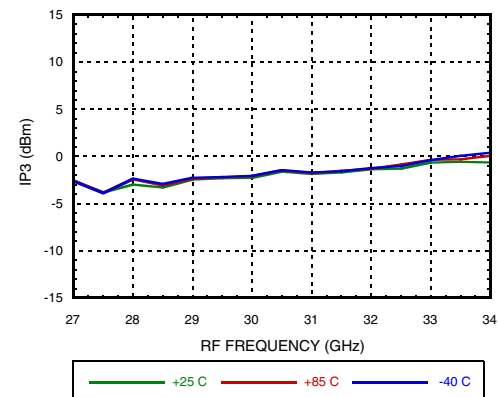
**Conversion Gain vs. LO Drive, USB**



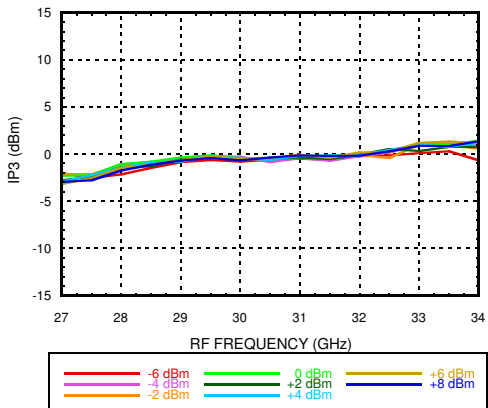
**Image Rejection vs. Temperature, USB**



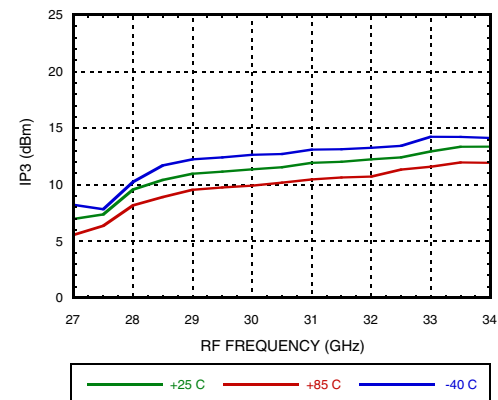
**Input IP3 vs. Temperature, USB**



**Input IP3 vs. LO Drive, USB**



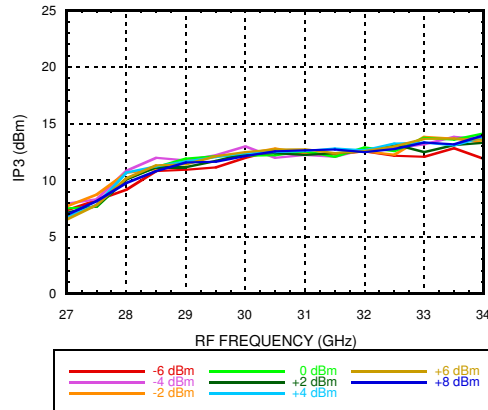
**Output IP3 vs. Temperature, USB**



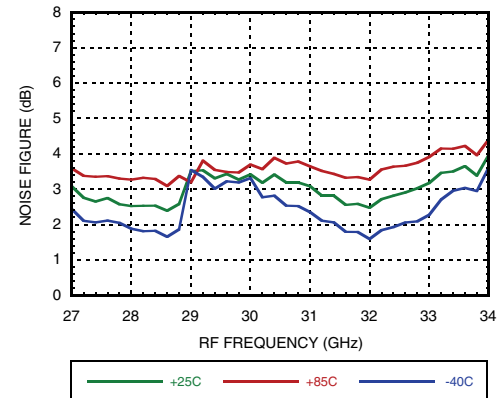


**GaAs MMIC I/Q DOWNCONVERTER  
27 - 34 GHz**

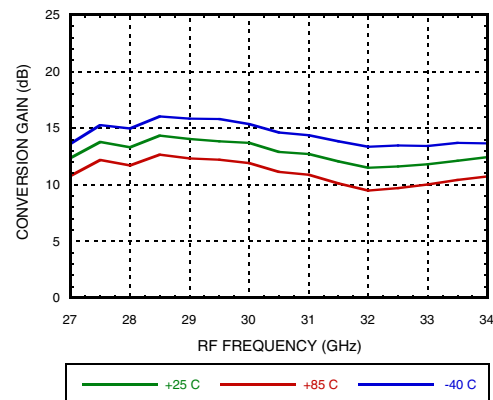
**Data Taken as SSB Downconverter with External IF 90° Hybrid, IF = 3300 MHz  
Output IP3 vs. LO Drive, USB**



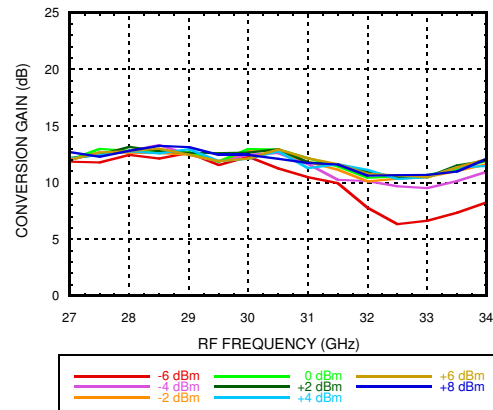
**Noise Figure vs. Temperature, USB**



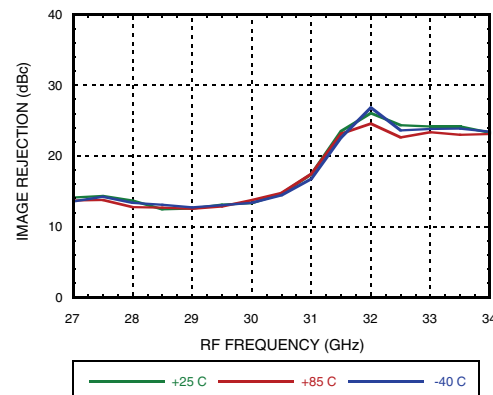
**Conversion Gain vs. Temperature, LSB**



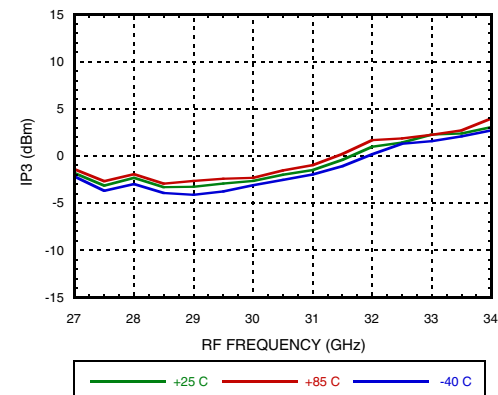
**Conversion Gain vs. LO Drive, LSB**



**Image Rejection vs. Temperature, LSB**

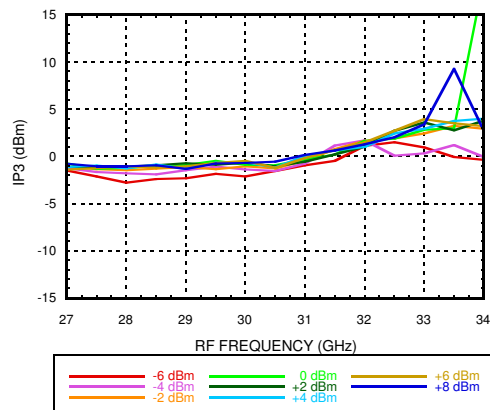
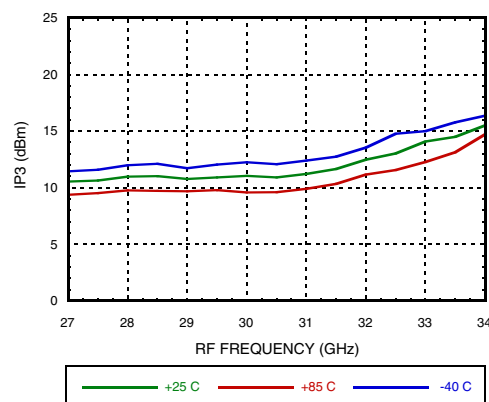
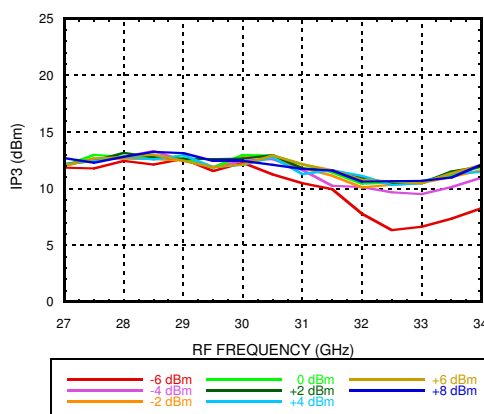


**Input IP3 vs. Temperature, LSB**




**GaAs MMIC I/Q DOWNCONVERTER**  
**27 - 34 GHz**

*Data Taken as SSB Downconverter with External IF 90° Hybrid, IF = 3300 MHz*

**Input IP3 vs. LO Drive, LSB**

**Output IP3 vs. Temperature, LSB**

**Output IP3 vs. LO Drive, LSB**




## GaAs MMIC I/Q DOWNCONVERTER

### 27 - 34 GHz

#### MxN Spurious Outputs, IF = 1 GHz <sup>[1]</sup>

mRF	nLO				
	0	1	2	3	4
0	x	35	18	49	
1	7	41	0	48	28
2		59	52	64	35
3				85	69

RF = 30 GHz @ -8 dBm

LO = 14.5 GHz @ +2 dBm

All values in dBc below IF power level (1RF -2LO)

Spur values are (M x RF) + (N x LO)

#### MxN Spurious Outputs, IF = 2 GHz <sup>[1]</sup>

mRF	nLO				
	0	1	2	3	4
0	x	32	18	52	
1	8	48	0	47	31
2		64	61	65	37
3				86	68

RF = 30 GHz @ -8 dBm

LO = 14.0 GHz @ +2 dBm

All values in dBc below IF power level (1RF -2LO)

Spur values are (M x RF) + (N x LO)

#### MxN Spurious Outputs, IF = 3.3 GHz <sup>[1]</sup>

mRF	nLO				
	0	1	2	3	4
0		42	23	46	
1	7	50	0	38	28
2		79	60	67	43
3				88	63

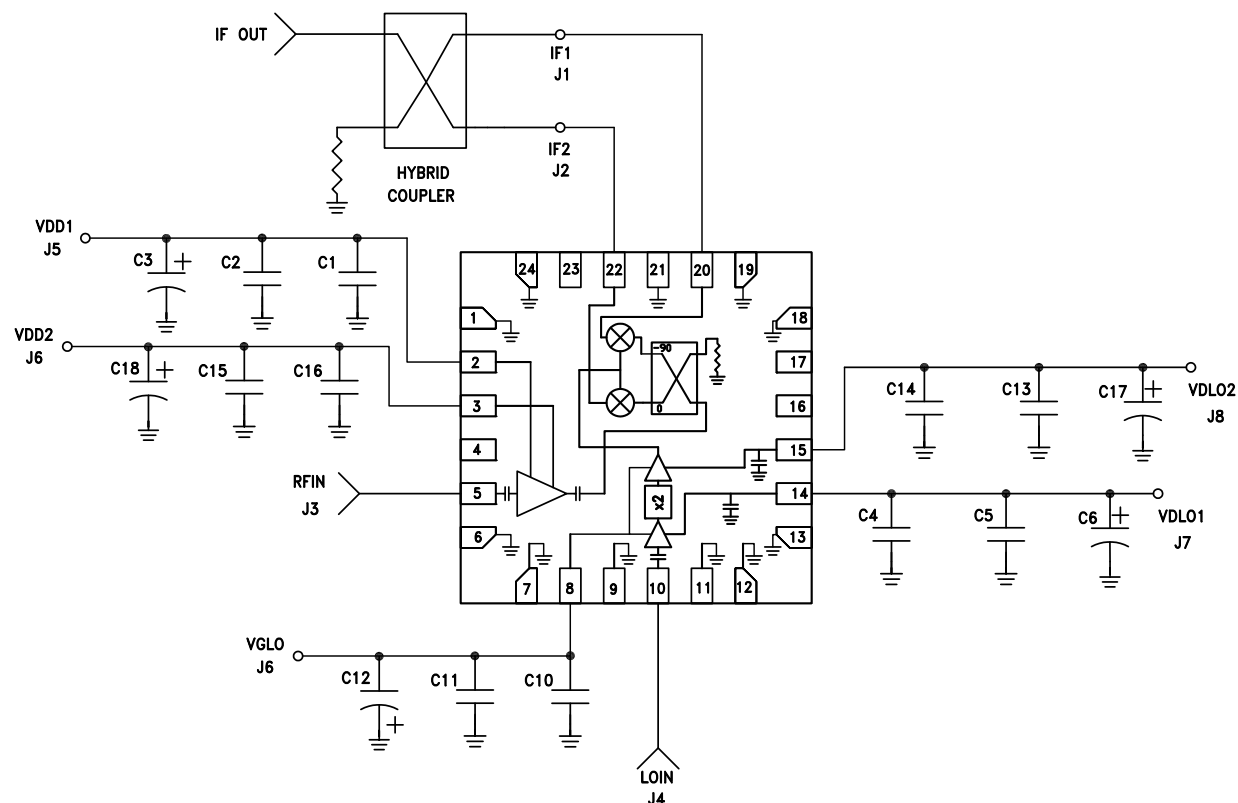
RF = 30 GHz @ -8 dBm

LO = 13.35 GHz @ +2 dBm

All values in dBc below IF power level (1RF -2LO)

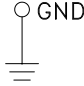
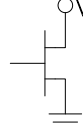
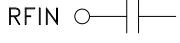
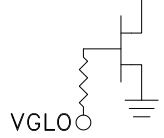
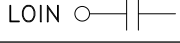
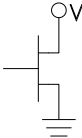
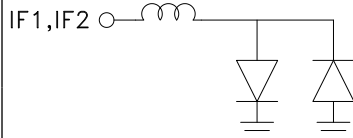
Spur values are (M x RF) + (N x LO)

[1] Data taken without external IF 90° hybrid

**GaAs MMIC I/Q DOWNCONVERTER  
27 - 34 GHz**
**Typical Application**


C1, C4, C10, C14, C16	100 pF Capacitor, 0402 Pkg.
C2, C5, C11, C13, C15	0.1 uF Capacitor, 0402 Pkg.
C3, C6, C12, C17, C18	4.7 uF Capacitor, Case A Pkg.

**GaAs MMIC I/Q DOWNCONVERTER  
27 - 34 GHz**
**Pin Descriptions**

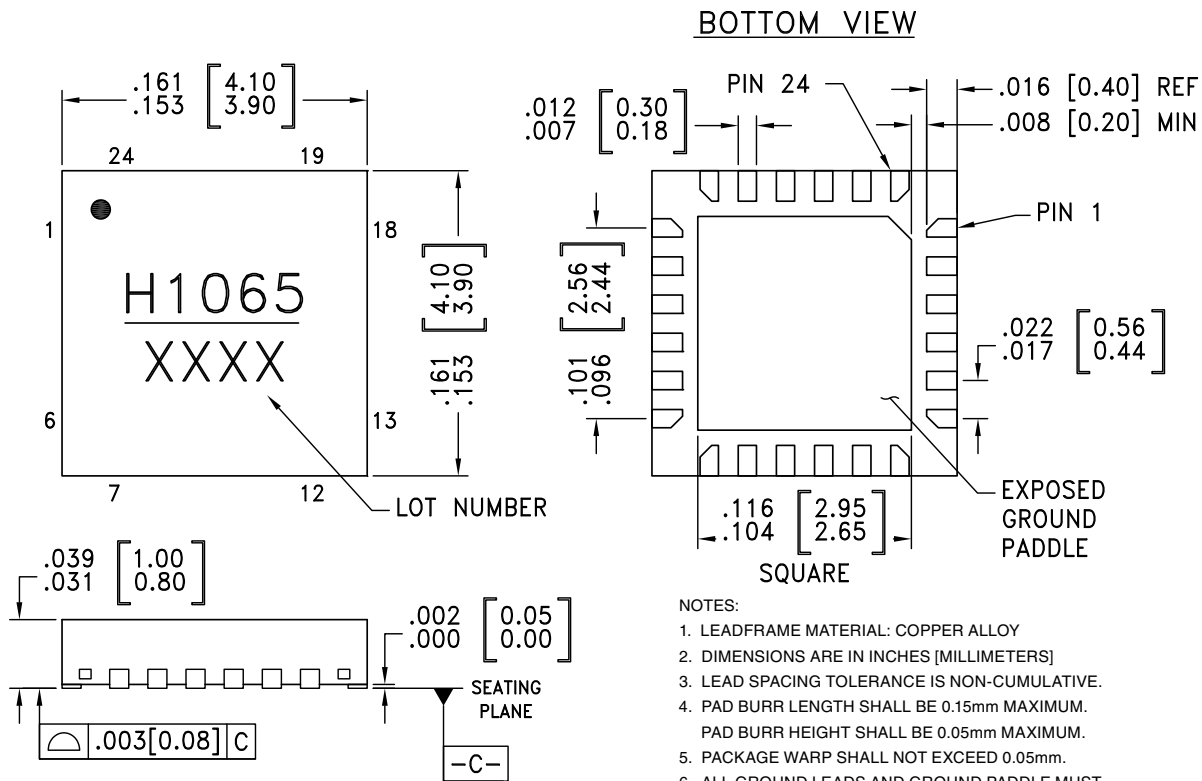
Pin Number	Function	Description	Interface Schematic
1, 4, 6, 7, 9, 11, 12, 13, 18, 19, 21, 24	GND	Ground Connect. These pins and exposed ground paddle must be connected to RF/DC ground.	
2	VDD1	Drain Bias for the low noise amplifier. The recommended DC voltage is 3 V. Refer to the typical application circuit for required external components.	
3	VDD2		
5	RFIN	Radio Frequency Input. This pin is AC coupled and matched to 50 Ohms.	
8	VGLO	Gate Bias for the Local Oscillator. Adjust VGLO from -2 V to 0 V to set total VDLO1 and VDLO2 current to 150mA. Refer to the typical application circuit for required external components.	
10	LOIN	Local Oscillator Input. This pin is AC coupled and matched to 50 Ohms.	
14	VDLO1	Drain Bias for the Multiplier Input Buffer Amp. The recommended DC voltage is 3V. Refer to the typical application circuit for required external components.	
15	VDLO2	Drain Bias for the Multiplier output Buffer Amp. The recommended DC voltage is 3V. Refer to the typical application circuit for required external components.	
16, 17, 23	N/C	No connection required. The pins are not connected internally. However, all data shown herein was measured with these pins connected to RF/DC ground externally.	
20	IF1	Quadrature Intermediate Frequency Inputs. These pins are DC coupled. For applications not requiring operation to DC, use an off chip DC blocking capacitor. For operation to DC, these pins must not source/sink more than 3 mA of current or device non-function and failure may result.	
22	IF2		


**GaAs MMIC I/Q DOWNCONVERTER**  
**27 - 34 GHz**
**Absolute Maximum Ratings**

RF Input	+8 dBm
LO Input	+8 dBm
Drain Bias Voltage (Vdd)	+3.5 V
Channel Temperature	175 °C
Continuous P <sub>diss</sub> (T = 85°C) (derate 18.5 mW/°C above 85°C)	1.66 W
Thermal Resistance (channel to ground paddle)	54.1 °C/W
Storage Temperature Range	-65 to +150 °C
Operating Temperature Range	-40 to +85 °C
ESD Sensitivity (HBM)	250 V (Class 1A)



**ELECTROSTATIC SENSITIVE DEVICE**  
**OBSERVE HANDLING PRECAUTIONS**

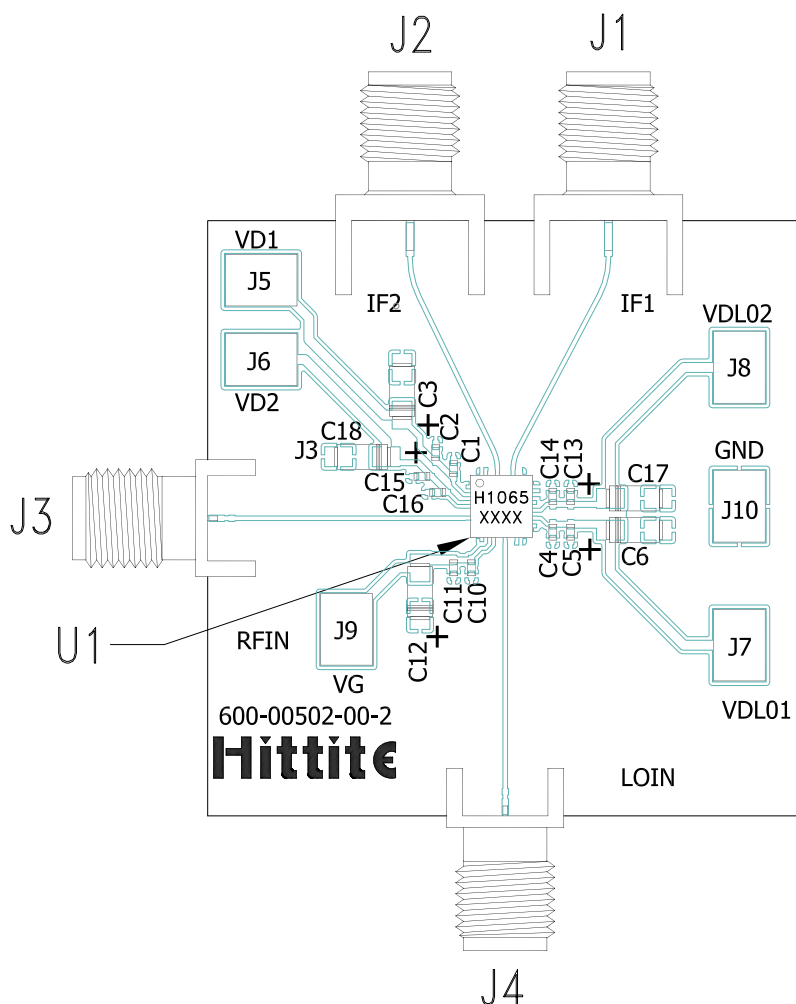
**Outline Drawing**

**Package Information**

Part Number	Package Body Material	Lead Finish	MSL Rating	Package Marking <sup>[2]</sup>
HMC1065LP4E	RoHS-compliant Low Stress Injection Molded Plastic	100% Sn 10 micron min	MSL1 <sup>[1]</sup>	H1065 XXXX

[1] Max peak reflow temperature of 260 °C

[2] 4-Digit lot number XXXX

**Evaluation PCB**



**List of Materials for Evaluation PCB Eval01-HMC1065LP4 [1]**

Item	Description
J1, J2	SMA SRI
J3, J4	K-Connector SRI
J5 - J10	DC Pins
C1, C4, C10, C14, C16	100 pF Capacitor, 0402 Pkg.
C2, C5, C11, C13, C15	0.1 uF Capacitor, 0402 Pkg.
C3, C6, C12, C17, C18	4.7 uF Capacitor, Case A
U1	HMC1065LP4E Downconverter
PCB [2]	600-00502-00 Evaluation Board

[1] Reference this number when ordering complete evaluation PCB

[2] Circuit Board Material: Arlon 25FR, FR4 or Rogers 4350

The circuit board used in the application should use RF circuit design techniques. Signal lines should have 50 Ohm impedance while the package ground leads and exposed paddle should be connected directly to the ground plane similar to that shown. A sufficient number of via holes should be used to connect the top and bottom ground planes. The evaluation circuit board shown is available from Analog Devices upon request.



# Mouser Electronics

Authorized Distributor

Click to View Pricing, Inventory, Delivery & Lifecycle Information:

[Analog Devices Inc.:](#)

[HMC1065LP4E](#) [EVAL01-HMC1065LP4](#)