

MAX698/MAX699

Low-Cost, Power-On Reset and Watchdog Controllers

General Description

The MAX698/MAX699 monitor the +5V supply in microprocessor (μ P) and digital systems. They supply a RESET pulse of at least 140ms duration on power-up, power-down, and during low-voltage brownout conditions. Circuit reliability is increased at reduced cost by eliminating all external components and adjustments.

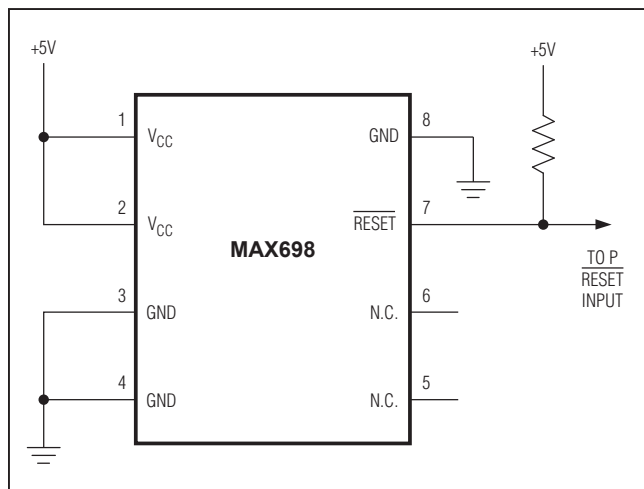
The MAX699 includes all features of the MAX698, but also provides a watchdog input to monitor microprocessor activity. The RESET output goes low if the watchdog input (WDI) is not toggled within 1 second. The watchdog feature can be disabled by leaving WDI open.

Both parts are supplied in 8-lead PDIP and 16-lead 0.3in wide small outline (SO) packages and are specified from 0°C to +70°C for C grade devices and -40°C to +85°C for E devices. The SO versions, with more pins than the 8-lead PDIP, have additional outputs not available in DIP packages. These are RESET (without inversion) and watchdog output ($\overline{\text{WDO}}$).

Applications

- Computers
- Controllers
- Intelligent Instruments
- Critical μ P Power Monitoring

Typical Operating Circuit



Features

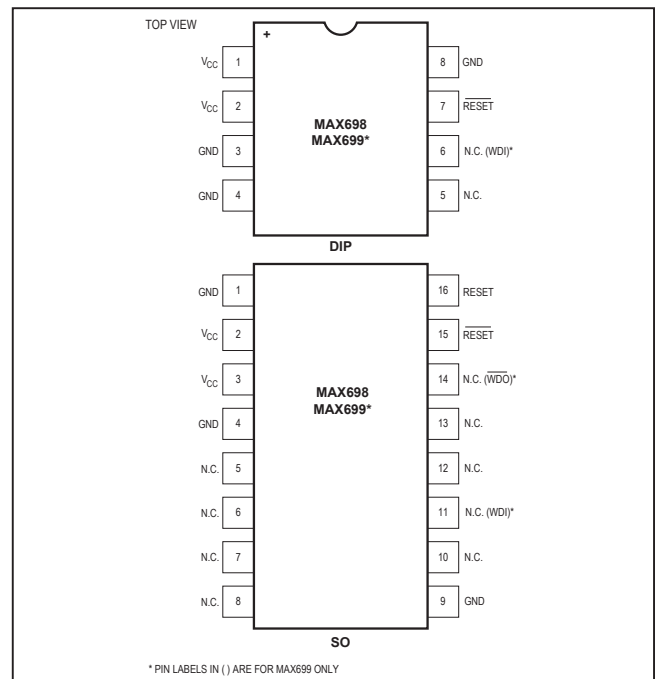
- Precision Voltage Monitor
- Power-OK/Reset Time Delay
- Watchdog Timer
- Minimum Component Count

Ordering Information

| PART* | TEMP RANGE | PIN-PACKAGE |
|-----------|----------------|-------------|
| MAX698CPA | 0°C to +70°C | 8 PDIP |
| MAX698CWE | 0°C to +70°C | 16 Wide SO |
| MAX698EPA | -40°C to +85°C | 8 PDIP |
| MAX698EWE | -40°C to +85°C | 16 Wide SO |
| MAX699CPA | 0°C to +70°C | 8 PDIP |
| MAX699CWE | 0°C to +70°C | 16 Wide SO |
| MAX699EPA | -40°C to +85°C | 8 PDIP |
| MAX699EWE | -40°C to +85°C | 16 Wide SO |

*Devices are available in both leaded and lead(Pb)-free packaging. Specify lead free by adding the + symbol at the end of the part number when ordering.

Pin Configuration



Absolute Maximum Ratings

V_{CC}-0.3V to +6.0V
 Input Voltage (with respect to GND)
 WDI , \overline{WDO} , $RESET$, \overline{RESET} -0.3V to V_{CC}
 Operating Temperature Range
 C Suffix0°C to +70°C
 E Suffix -40°C to +85°C
 Rate of Rise, V_{CC} 100V/ μ s

Power Dissipation ($T_A = +70^\circ\text{C}$)
 8-Pin PDIP (derated 5mW/ $^\circ\text{C}$ above +70°C).....400mW
 16-Pin SO (derated 7mW/ $^\circ\text{C}$ above +70°C).....600mW
 Storage Temperature Range -65°C to +150°C
 Lead Temperature (soldering, 10s) +300°C

Stresses beyond those listed under "Absolute Maximum Ratings" may cause permanent damage to the device. These are stress ratings only, and functional operation of the device at these or any other conditions beyond those indicated in the operational sections of the specifications is not implied. Exposure to absolute maximum rating conditions for extended periods may affect device reliability.

Electrical Characteristics

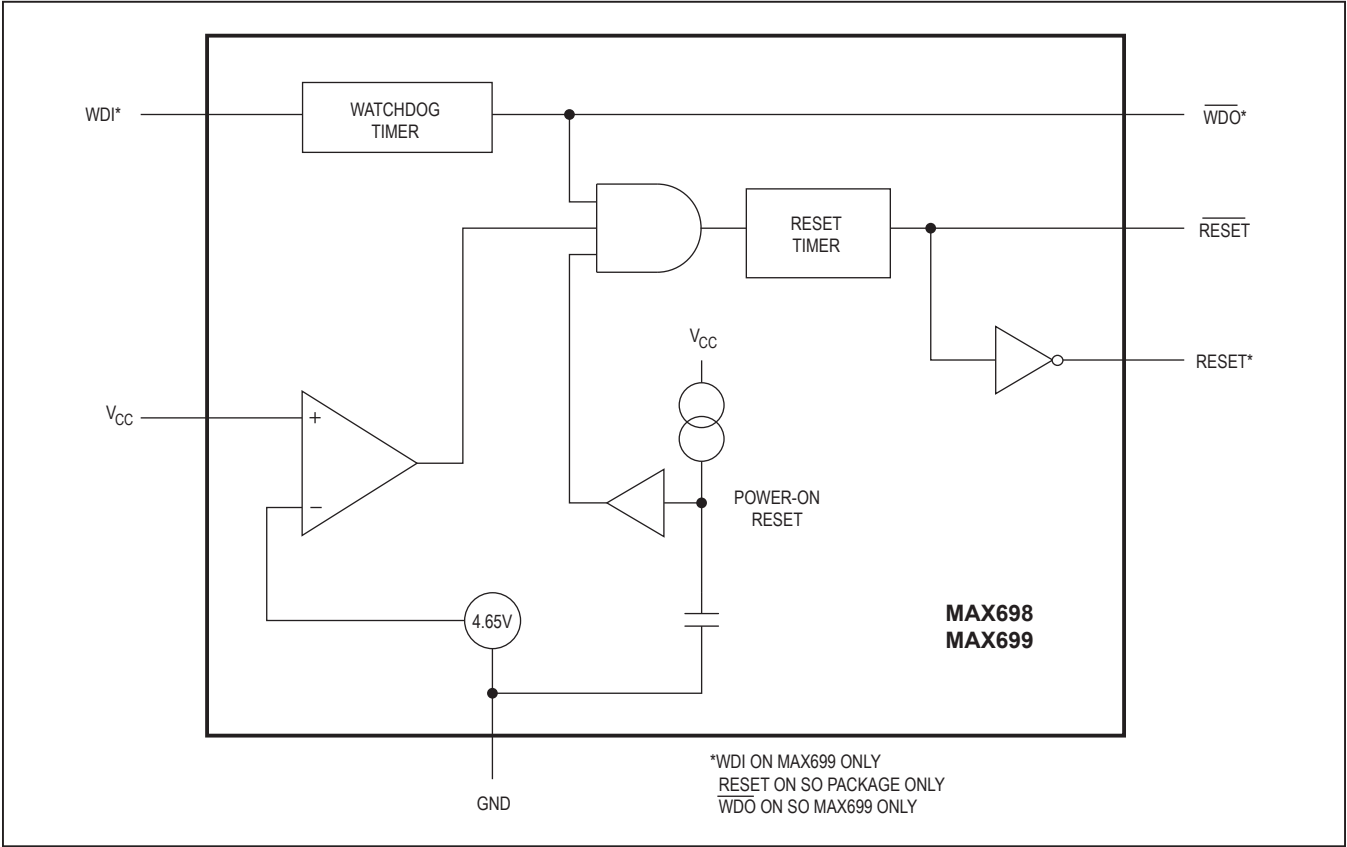
($V_{CC} = +5\text{V}$, $T_A = +25^\circ\text{C}$, unless otherwise noted.)

| PARAMETER | CONDITIONS | | MIN | TYP | MAX | UNITS |
|--|-----------------------|--|------|------|------|---------------|
| Operating Voltage Range | $T_A = \text{full}$ | | 3.0 | | 5.5 | V |
| Supply Current | | | | | 5 | mA |
| Power-Up Reset Deassertion | $T_A = \text{full}$ | | 4.50 | 4.65 | 4.75 | V |
| Power-Up Reset Assertion | $T_A = \text{full}$ | | 4.4 | | | V |
| Hysteresis | | | | 40 | | mV |
| Reset Output Pulse Width | | | 140 | | 500 | ms |
| \overline{RESET} OUTPUT (Open Drain) | Output low | $I_{SINK} = 1.6\text{mA}$, $V_{CC} = 4.4\text{V}$ | | | 0.4 | V |
| | Output high | $I_{SOURCE} = 1\mu\text{A}$, $V_{CC} = 5\text{V}$ | 3.5 | | | |
| \overline{RESET} OUTPUT (SO Package Only) | Output low | $I_{SINK} = 1.6\text{mA}$, $V_{CC} = 5\text{V}$ | | | 0.4 | V |
| | Output high | $I_{SOURCE} = 1\mu\text{A}$, $V_{CC} = 4.4\text{V}$ | 3.5 | | | |
| \overline{WDO} Output (MAX699 SO Package Only) | Output low | $I_{SINK} = 1.6\text{mA}$, $V_{CC} = 5\text{V}$ | | | 0.4 | V |
| | Output high | $I_{SOURCE} = 1\mu\text{A}$, $V_{CC} = 4.4\text{V}$ | 3.5 | | | |
| MAX699 Watchdog Timeout Period | | | | | | s |
| MAX699 Minimum WDI Input Pulse Width | | | | | | ns |
| MAX699 WDI Input Threshold | $V_{CC} = +5\text{V}$ | Logic-low | | | 0.8 | V |
| | | Logic-high | 3.8 | | | |
| MAX699 WDI Input Current | $WDI = V_{CC}$ | | | 20 | 50 | μA |
| | $WDI = 0\text{V}$ | | -50 | -15 | | |

Pin Configuration

| PIN | | NAME | FUNCTION |
|------------|---------|---------------------------------------|---|
| SO | PDIP | | |
| 1, 4, 9 | 3, 4, 8 | GND | Chip Power Ground |
| 2, 3 | 1, 2 | V _{CC} | +5V Sense Input and MAX698/MAX699 Chip Power |
| 5–8, 10–14 | 5, 6 | N.C. | No Connection |
| 11 | 6 | WDI (MAX699 Only) | (MAX699 Only.) A three-level input. If WDI remains high or low for more than the watchdog timeout period, $\overline{\text{RESET}}$ pulses low ($\overline{\text{WDO}}$ also goes low on the MAX699 SO package). If WDI is unconnected, the watchdog circuit is disabled. |
| 14 | — | $\overline{\text{WDO}}$ (MAX699 Only) | (MAX699 Only.) Goes low when WDI remains high or low for more than the watchdog timeout period. $\overline{\text{WDO}}$ is set high at the next WDI transition. If WDI is unconnected or at midsupply, $\overline{\text{WDO}}$ remains high. $\overline{\text{WDO}}$ also remains high when V _{CC} falls below 4.4V. |
| 15 | 7 | $\overline{\text{RESET}}$ | Goes low when V _{CC} falls below internally set threshold (see the <i>Electrical Characteristics</i> table). |
| 16 | — | RESET | Goes high when V _{CC} falls below internally set threshold. |

Pin Description

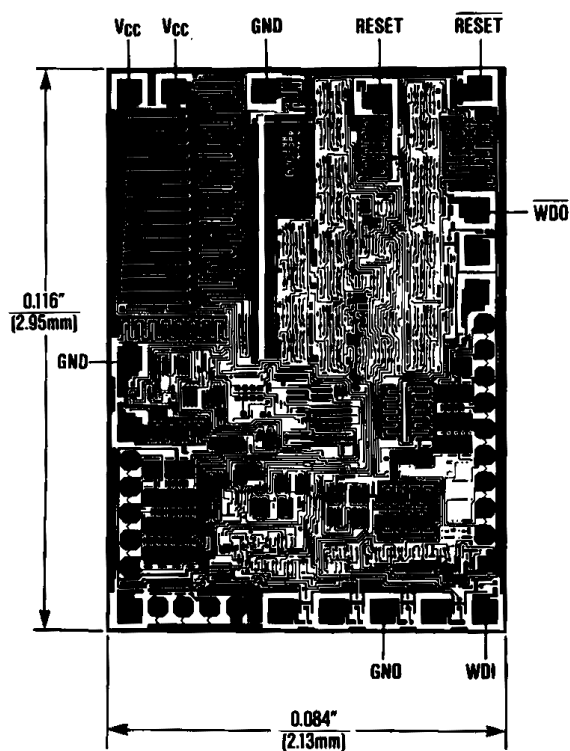


Package Information

For the latest package outline information and land patterns (footprints), go to www.maximintegrated.com/packages. Note that a "+", "#", or "-" in the package code indicates RoHS status only. Package drawings may show a different suffix character, but the drawing pertains to the package regardless of RoHS status.

| PACKAGE TYPE | PACKAGE CODE | OUTLINE NO. | LAND PATTERN NO. |
|--------------|--------------|-------------------------|-------------------------|
| 8 PDIP | P8-2 | 21-0043 | — |
| 16 Wide SO | W16-1 | 21-0042 | 90-0107 |

Chip Topography



Revision History

| REVISION NUMBER | REVISION DATE | DESCRIPTION | PAGES CHANGED |
|--------------------|------------------|--|------------------|
| 4 | 5/13 | Corrected WDI SO pin number in <i>Pin Description</i> | 3 |
| 5 | 9/14 | No <i>I</i> / <i>V</i> OPNs; removed automotive reference from <i>Applications</i> | 1 |

For pricing, delivery, and ordering information, please contact Maxim Direct at 1-888-629-4642, or visit Maxim Integrated's website at www.maximintegrated.com.

Maxim Integrated cannot assume responsibility for use of any circuitry other than circuitry entirely embodied in a Maxim Integrated product. No circuit patent licenses are implied. Maxim Integrated reserves the right to change the circuitry and specifications without notice at any time. The parametric values (min and max limits) shown in the Electrical Characteristics table are guaranteed. Other parametric values quoted in this data sheet are provided for guidance.

Mouser Electronics

Authorized Distributor

Click to View Pricing, Inventory, Delivery & Lifecycle Information:

[Analog Devices Inc.:](#)

[MAX698CPA+](#) [MAX698CWE+](#) [MAX698EPA+](#) [MAX698CWE+T](#) [MAX698EWE+](#)