

## Evaluating the ADA4571 Integrated AMR Angle Sensor and Signal Conditioner

### FEATURES

- USB 2.0 interface
- Jumper or computer controlled temperature compensation mode enable
- Jumper or computer controlled power-down mode enable
- Measurement test points and coaxial connectors

### EVALUATION KIT CONTENTS

- ADA4571 magnetic stimulus
  - Dipole magnet
  - Hand movable mounting
- Readback electronics

### ADDITIONAL HARDWARE REQUIRED

- 6 V to 12 V bench supply (optional)
- SDP-S controller board
  - USB cable (supplied with the SDP-S controller board)

### ADDITIONAL SOFTWARE REQUIRED

- LabVIEW 2015 software downloadable from the EV-ADA4571RSDZ product page

### GENERAL DESCRIPTION

The EV-ADA4571RSDZ evaluation board features the ADA4571 in an end of shaft magnet configuration, as shown in Figure 1. The evaluation kit is composed of an ADA4571 motherboard, a magnetic stimulus on a hand turnable mount, a USB interface, and an SDP-S controller board. The required LabVIEW 2015 graphical user interface (GUI) software for Windows® is available for download from the EV-ADA4571RSDZ product page.

The EV-ADA4571RSDZ evaluation board features an on-board 5 V regulator; a 4-channel simultaneous sampling, analog-to-digital converter (ADC); and jumpers for enabling the temperature compensation and power-down modes within the ADA4571. The ADA4571 motherboard also features test points and unpopulated coaxial connectors for the three outputs of the device.

The SDP-S controller board controls the ADC on the ADA4571 motherboard, reading back the ADA4571 outputs to change the digital inputs to the ADA4571, interface with the GUI, and supply power to the evaluation board through the USB connection.

For full details, see the ADA4571 data sheet, which must be used in conjunction with this user guide when using the evaluation board.

### ADA4571 END OF SHAFT MAGNETIC EVALUATION SYSTEM

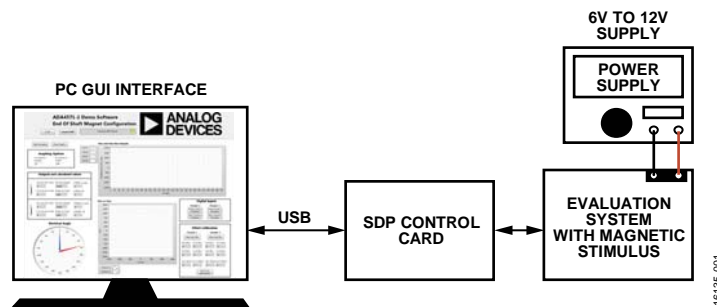


Figure 1.

**TABLE OF CONTENTS**

Features .....	1	Software Installation Procedures.....	3
Evaluation Kit Contents.....	1	Evaluation Board Hardware.....	4
Additional Hardware Required .....	1	Jumper Configuration .....	4
Additional Software Required .....	1	Device Under Test (DUT) Outputs.....	4
General Description .....	1	Evaluation Board Software.....	5
ADA4571 End of Shaft Magnetic Evaluation System .....	1	Starting the Evaluation GUI .....	5
Revision History .....	2	Overview of the Main ADA4571 GUI Window .....	5
Evaluation Board Quick Start Procedures .....	3	Motherboard Schematic .....	8

**REVISION HISTORY**

8/2017—Revision 0: Initial Version

## EVALUATION BOARD QUICK START PROCEDURES

### SOFTWARE INSTALLATION PROCEDURES

Install the [SDP-S](#) controller board drivers and LabVIEW 2015 runtime engine before using the LabVIEW 2015 GUI.

#### LabVIEW 2015 Runtime Engine

To install the LabVIEW 2015 runtime engine, follow the instructions on the National Instruments website.

#### SDP Installation

To install the SDP drivers, download the **SDPDrivers.exe** file from the [SDP-S](#) product page and complete the following steps:

1. To initialize the installation, run the **SDPDrivers.exe** executable file.
2. When the SDP drivers setup wizard appears, click **Next** (see Figure 2).

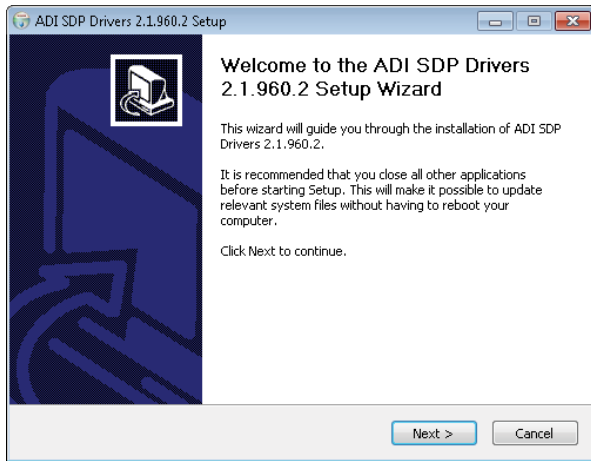


Figure 2. SDP Driver Installation Wizard

3. When the **Choose Install Location** window appears (see Figure 3), click **Install**. To select a different destination folder, click **Browse**, select a destination, then click **Install**.

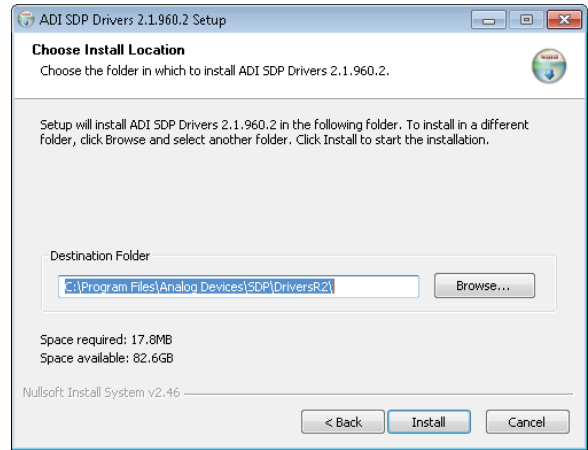


Figure 3. Choose Install Location Window

4. Click **Finish** to complete the installation of the SDP drivers.
5. Before running the LabVIEW GUI, Connect the [SDP-S](#) controller board to the motherboard and plug the [SDP-S](#) controller board into the PC with the supplied USB cable. The computer now recognizes the [SDP-S](#) controller board, and the LabVIEW 2015 GUI can be opened.

#### Running the LabVIEW GUI

To run the GUI, download the LabVIEW GUI software from the [ADA4751](#) product page and complete the following steps:

1. Place the downloaded executable file and supporting files in a convenient location for use (see Figure 4). It is recommended to place these files on the root C drive of the PC. Do not separate the executable file from the other files that are downloaded or the executable file cannot run.

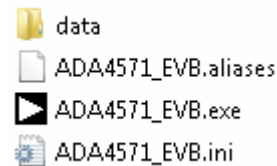


Figure 4. Place Downloaded Files on the PC

2. Double click the **ADA4571\_EVB.exe** file to launch the LabVIEW GUI.

## EVALUATION BOARD HARDWARE

The EV-ADA4571RSDZ end of shaft evaluation system comprises of a printed circuit board (PCB) with the [AD7866](#) ADC and an external mountable magnetic stimulus.

The [ADA4571](#) evaluation system can be powered directly from the host PC USB, from an external bench supply, or through the on-board 5 V regulator ([ADP3336](#)).

To power the motherboard through an on-board 5 V reference, apply 6 V to 12 V across the P7 to P8 connectors and configure the jumpers accordingly. If the bench supply features current limiting, it is recommended to set the current limit to 100 mA as a precaution.

## JUMPER CONFIGURATION

Refer to the [ADA4571](#) motherboard schematic (see Figure 13) to understand the purpose of each jumper.

Configure the P10 motherboard default jumper as follows:

- Install a jumper on P10 between the USB\_VBUS supply and the +5V\_ANALOG supply to power the evaluation board through the USB connection at the PC.
- Alternatively, install a jumper on P10 between +5V\_REG supply and the +5V\_ANALOG supply to power the evaluation board through the external bench supply

## DEVICE UNDER TEST (DUT) OUTPUTS

The outputs of the [ADA4571](#) can be monitored at the test points located on the evaluation board.

All outputs from the [ADA4571](#) are also sampled by the on-board ADC and are available in the LabVIEW GUI.

# EVALUATION BOARD SOFTWARE

## STARTING THE EVALUATION GUI

To power the evaluation board using the [ADP3336](#) on-board 5 V supply, install a jumper on P10, connecting the +5V\_REG supply and the +5V\_ANALOG supply. Using an external power supply, plug the positive supply for the evaluation board into the red terminal, P7, and plug the negative terminal into P8 on the [ADA4571](#) motherboard. The evaluation board requires between 6 V and 12 V, which is then regulated to 5 V on the [ADA4571](#) motherboard using the on-board [ADP3336](#). This supply powers both the on-board ADC ([AD7866](#)) as well as the [ADA4571](#).

To use the EV-ADA4571RSDZ evaluation board with full USB power, install a jumper on P10, connecting the USB\_VBUS supply and the +5V\_ANALOG supply. The 5 V USB power supplies the [ADA4571](#).

## OVERVIEW OF THE MAIN [ADA4571](#) GUI WINDOW

Figure 5 shows the main [ADA4571](#) GUI window after launching it.

When launching the GUI, the [SDP-S](#) controller board must be recognized by the GUI before proceeding. Click the **Connect SDP** button to read the EEPROM identification of the motherboard and ensure that the correct program is in use. If the [SDP-S](#) controller board is not connected, or if the drivers are not installed correctly, an error message appears. Ensure that the drivers are installed correctly, and that the PC recognizes the [SDP-S](#) controller board, if this occurs.

When the [SDP-S](#) controller board is properly connected, and the program recognizes the motherboard, the status bar reads **SDP Board Ready** and the yellow LED turns green (see Figure 5).

Initially, all figures are blank. Click **Start Sampling** to begin sampling the [ADA4571](#).

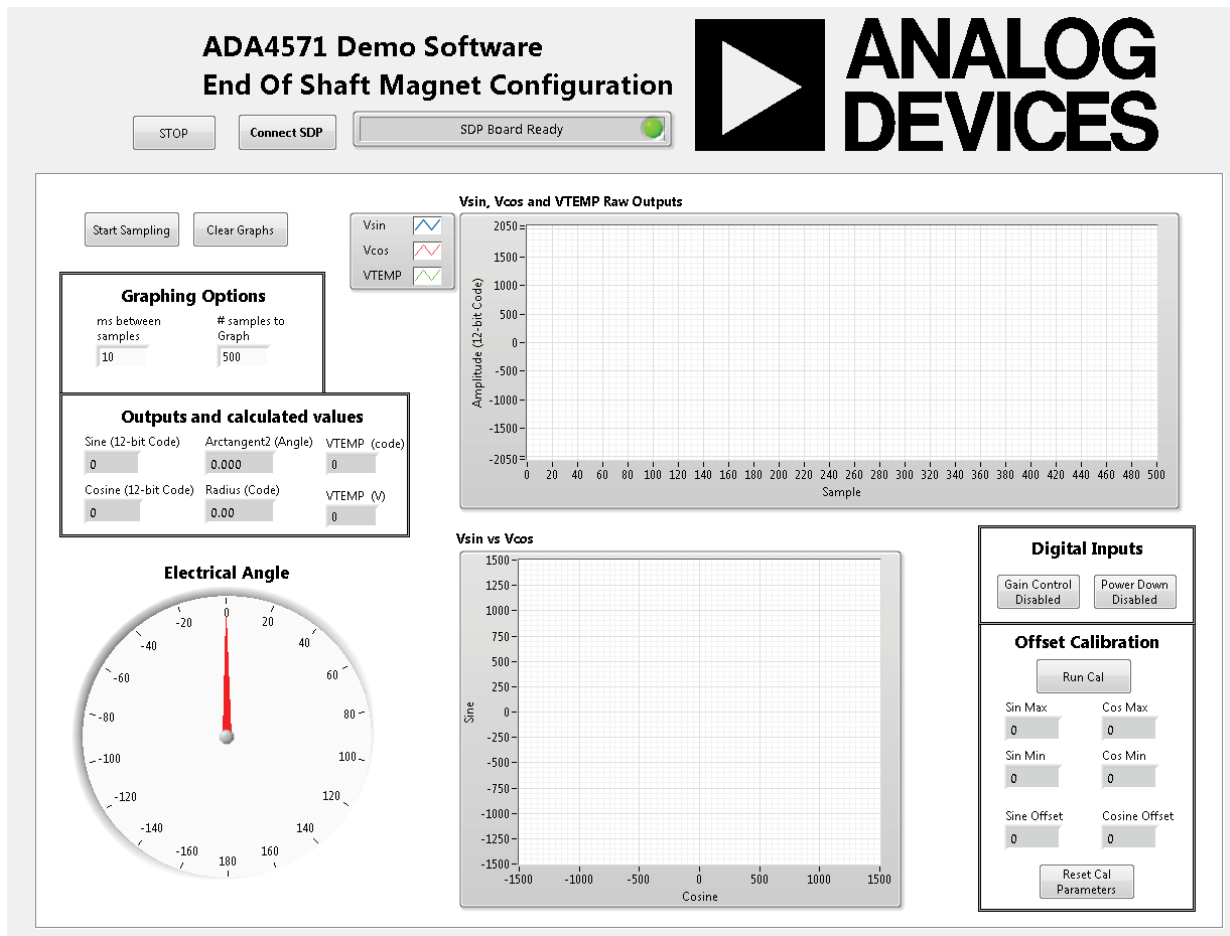


Figure 5. [ADA4571](#) Evaluation Board Software Main Window

**V<sub>SIN</sub>, V<sub>COS</sub>, and VTEMP Raw Outputs**

The V<sub>SIN</sub>, V<sub>COS</sub> and VTEMP Raw Outputs graph shows the three outputs from the ADA4571 magnetic angle sensor (see Figure 6).

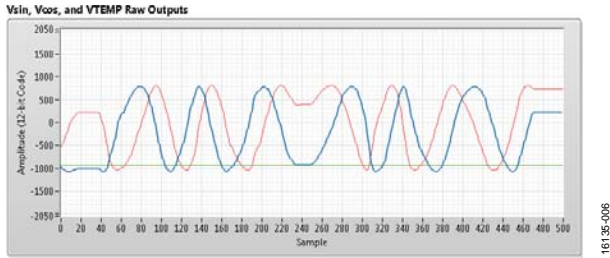


Figure 6. V<sub>SIN</sub>, V<sub>COS</sub>, and VTEMP Raw Outputs Graph

In Figure 6, the blue and red waveforms indicate the V<sub>SIN</sub> channel and V<sub>COS</sub> channel outputs, respectively, and the green waveform indicates the VTEMP channel output. As the magnet rotates above the ADA4571, the V<sub>SIN</sub> and V<sub>COS</sub> outputs change while staying 90° out of phase. These two channels, V<sub>COS</sub> and V<sub>SIN</sub>, report similar results that differ by the relative rotation of the sensor die and the voltage offset differences for the sine and cosine channels.

Figure 6 shows the output waveforms sampled by the AD7866 ADC. The waveforms are plotted in 12-bit code. The AD7866 simultaneously samples V<sub>SIN</sub> and V<sub>COS</sub>. An internal reference of 2.5 V is subtracted in the hardware because the readout of the ADC is in twos complement. Therefore, the two signals center around 0 in the raw waveform plot. In a real application, it is important that these two channels are simultaneously sampled because extra errors can be introduced from the phase delay between the sampling of the individual channels. For every 50 samples of the V<sub>SIN</sub> and V<sub>COS</sub>, the AD7866 samples the VTEMP channel.

When powering the EV-ADA4571RSDZ evaluation board through the USB connector attached to the SDP-S controller board, some variation appears in the supply voltage of the ADA4571. Because the readout of the AD7866 is in twos complement format, with respect to the internal 2.5 V reference, the offset of these waveforms is higher than the inherent offset of the ADA4571. After offset correction of the sine and cosine signals, which is recommended for the end use of the sensor, the offsets due to the ADC reference, as well as the sensor offset, are removed.

**Graphing Options**

When the EV-ADA4571RSDZ evaluation board is operating, it constantly samples the V<sub>SIN</sub> channel and V<sub>COS</sub> channel, and it samples the VTEMP channel after every 50 samples of the V<sub>SIN</sub> and the V<sub>COS</sub> channels.

To choose the interval between samples, enter different values in the ms between samples text box (see Figure 7). The default interval is 10 ms. This delay is set after information is transferred from the AD7866.

The # samples to Graph field sets the number of samples to save and display in the graphs. The default number of samples saved and displayed is 200 samples.

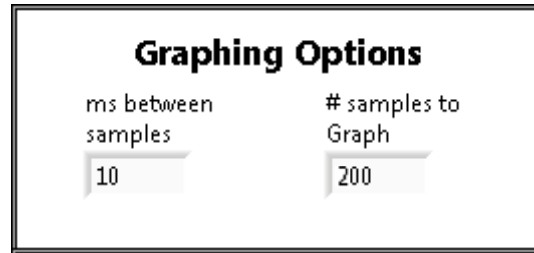


Figure 7. Graphing Options Pane

**Outputs and Calculated Values**

The values shown in the Output and calculated values pane show the ADA4571 output information in number format (see Figure 8). Again, the V<sub>SIN</sub>, V<sub>COS</sub>, and VTEMP outputs are in 12-bit, twos complement format with respect to the 2.5 V internal reference of the AD7866 ADC.

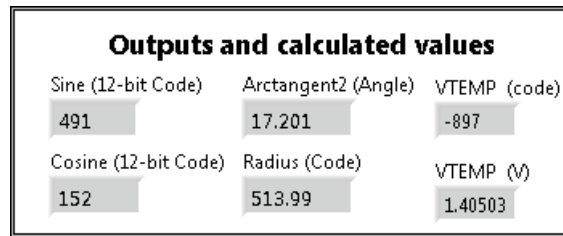


Figure 8. Outputs and calculated values Pane

A calculated angle value is also shown in Figure 8, given by the Arctangent2 (Angle) function field, and a calculated radius, given by the square root of the sum of squares for V<sub>SIN</sub> channel and V<sub>COS</sub> channel in the Radius (Code) field.

**Electrical Angle**

The electrical angle plot gives the calculated Arctangent2 (Angle) value in a visual format, as shown in Figure 9. As the magnetic field angle changes at the anisotropic magneto resistive (AMR) sensors, the electrical angle changes.

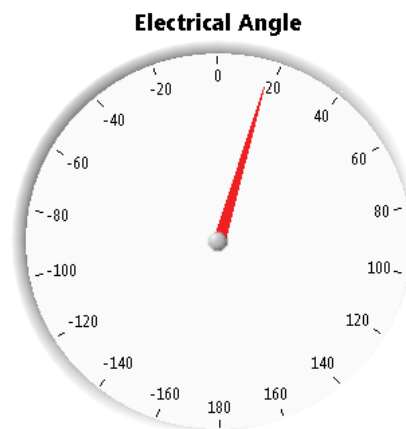


Figure 9. Electrical Angle Plot

**Vsin vs. Vcos Plot**

The **Vsin vs Vcos** graph shows the electrical angle from the ADA4571. However, there is more information shown in Figure 10, such as the radius of the output values that can give further diagnostic information to system. As long as the sensor is fully saturated, or the applied magnetic field strength exceeds 25 kA/m, the radius value remains unchanged at a constant temperature. As the AMR effect is smaller at high temperatures, the radius value changes with respect to temperature. See the ADA4571 data sheet for the temperature coefficient values for the output amplitude for the  $V_{SIN}$  and the  $V_{COS}$  channels.

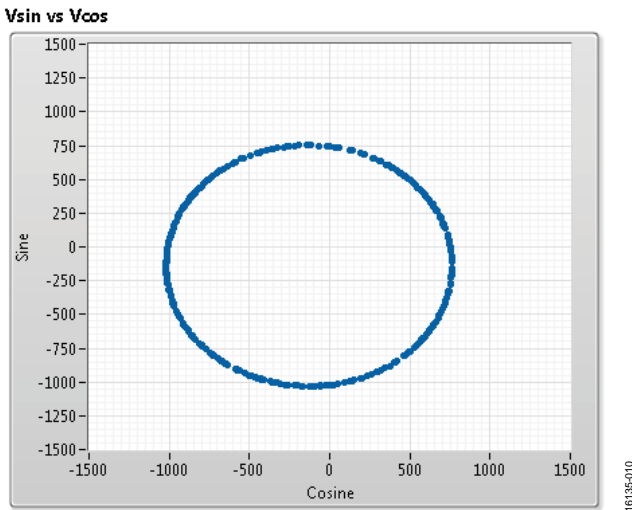


Figure 10. **Vsin vs Vcos** Graph

**Digital Inputs**

To toggle two digital inputs on the ADA4571, click the buttons in the **Digital Inputs** pane (see Figure 11).

The **Power Down Disabled** button puts the ADA4571 in a low power state by disabling the internal circuitry and placing the outputs in a high impedance state. See the ADA4571 data sheet for full details on the power-down current of the device.

The **Gain Control Disabled** button puts the device in gain control mode (see Figure 11). This mode alters the bridge supply voltage based on the internal temperature value of the ADA4571.

Through gain control mode, the output amplitude temperature coefficient of the ADA4571 reduces. See the ADA4571 data sheet for full details on output amplitude vs. temperature with the gain control mode enabled and disabled.



Figure 11. **Digital Inputs** Pane

**Offset Calibration**

An offset calibration is required to maximize the accuracy of the ADA4571. The  $V_{SIN}$  and  $V_{COS}$  channels have inherent voltage offsets due to a resistor mismatch within the AMR sensor bridges. See the ADA4571 data sheet for full details on the offset voltage ranges for the outputs.

There are a few methods that can null the offsets for the outputs. The ADA4571 GUI uses a maximum/minimum value to calculate these offsets. To run an offset calibration, click **Run Cal** (see Figure 12). When **Run Cal** is clicked, rotate the magnetic stimulus slowly through an entire mechanical rotation. This slow rotation ensures that the maximum and minimum output voltages are found for each channel.

The offset of each channel is calculated as the midpoint between the maximum and mid values captured during the calibration cycle. During normal operation, the offset value for each channel is subtracted from the current value before calculating the magnetic angle.

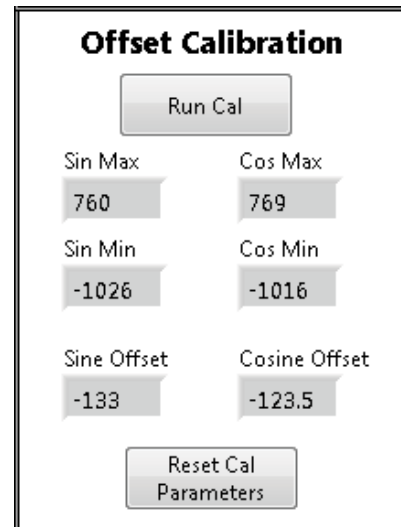


Figure 12. **Offset Calibration** Pane

MOTHERBOARD SCHEMATIC

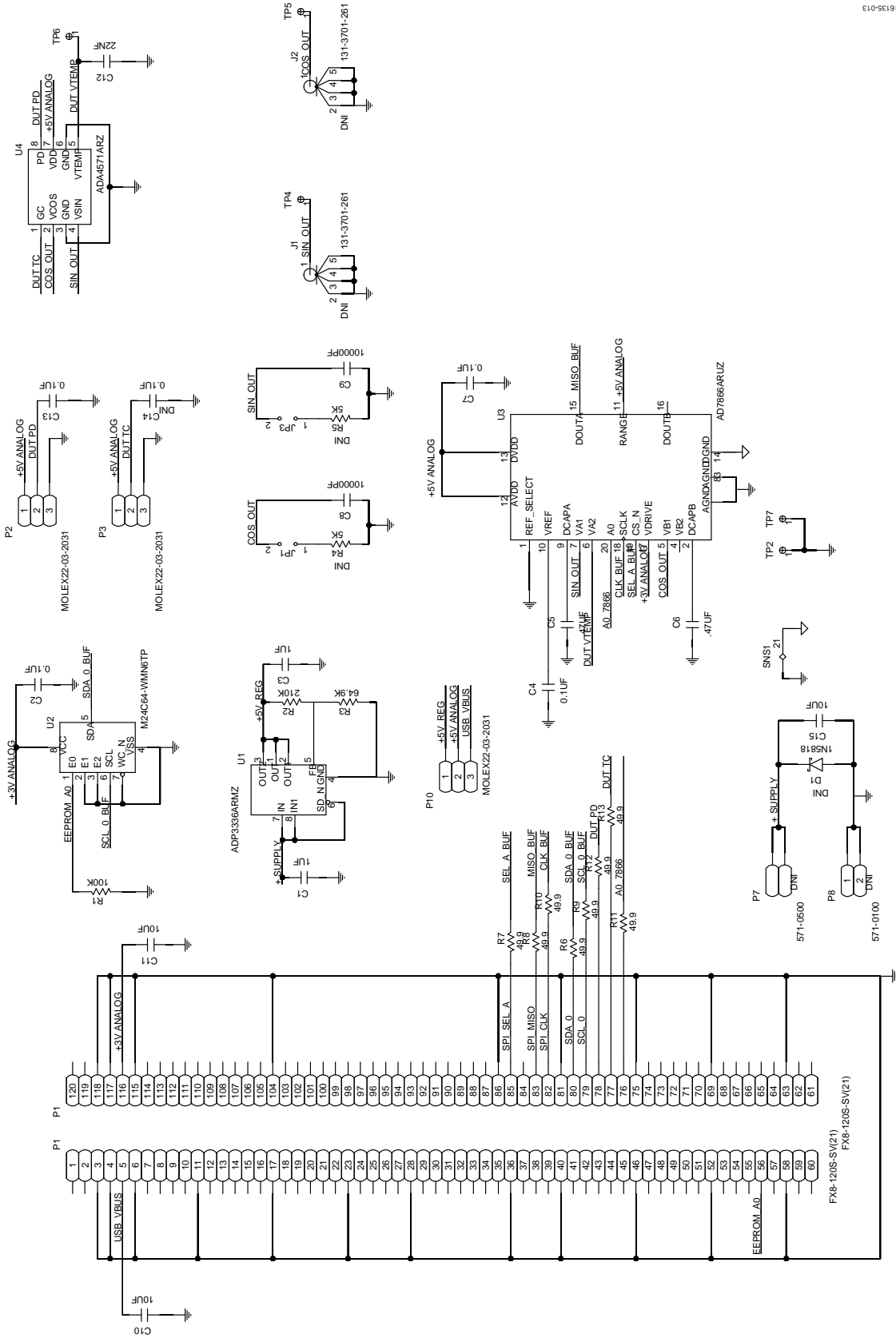


Figure 13. ADA4571 Evaluation Motherboard Schematic



## NOTES

**ESD Caution**

**ESD (electrostatic discharge) sensitive device.** Charged devices and circuit boards can discharge without detection. Although this product features patented or proprietary protection circuitry, damage may occur on devices subjected to high energy ESD. Therefore, proper ESD precautions should be taken to avoid performance degradation or loss of functionality.

**Legal Terms and Conditions**

By using the evaluation board discussed herein (together with any tools, components documentation or support materials, the "Evaluation Board"), you are agreeing to be bound by the terms and conditions set forth below ("Agreement") unless you have purchased the Evaluation Board, in which case the Analog Devices Standard Terms and Conditions of Sale shall govern. Do not use the Evaluation Board until you have read and agreed to the Agreement. Your use of the Evaluation Board shall signify your acceptance of the Agreement. This Agreement is made by and between you ("Customer") and Analog Devices, Inc. ("ADI"), with its principal place of business at One Technology Way, Norwood, MA 02062, USA. Subject to the terms and conditions of the Agreement, ADI hereby grants to Customer a free, limited, personal, temporary, non-exclusive, non-sublicensable, non-transferable license to use the Evaluation Board FOR EVALUATION PURPOSES ONLY. Customer understands and agrees that the Evaluation Board is provided for the sole and exclusive purpose referenced above, and agrees not to use the Evaluation Board for any other purpose. Furthermore, the license granted is expressly made subject to the following additional limitations: Customer shall not (i) rent, lease, display, sell, transfer, assign, sublicense, or distribute the Evaluation Board; and (ii) permit any Third Party to access the Evaluation Board. As used herein, the term "Third Party" includes any entity other than ADI, Customer, their employees, affiliates and in-house consultants. The Evaluation Board is NOT sold to Customer; all rights not expressly granted herein, including ownership of the Evaluation Board, are reserved by ADI. CONFIDENTIALITY. This Agreement and the Evaluation Board shall all be considered the confidential and proprietary information of ADI. Customer may not disclose or transfer any portion of the Evaluation Board to any other party for any reason. Upon discontinuation of use of the Evaluation Board or termination of this Agreement, Customer agrees to promptly return the Evaluation Board to ADI. ADDITIONAL RESTRICTIONS. Customer may not disassemble, decompile or reverse engineer chips on the Evaluation Board. Customer shall inform ADI of any occurred damages or any modifications or alterations it makes to the Evaluation Board, including but not limited to soldering or any other activity that affects the material content of the Evaluation Board. Modifications to the Evaluation Board must comply with applicable law, including but not limited to the RoHS Directive. TERMINATION. ADI may terminate this Agreement at any time upon giving written notice to Customer. Customer agrees to return to ADI the Evaluation Board at that time. LIMITATION OF LIABILITY. THE EVALUATION BOARD PROVIDED HEREUNDER IS PROVIDED "AS IS" AND ADI MAKES NO WARRANTIES OR REPRESENTATIONS OF ANY KIND WITH RESPECT TO IT. ADI SPECIFICALLY DISCLAIMS ANY REPRESENTATIONS, ENDORSEMENTS, GUARANTEES, OR WARRANTIES, EXPRESS OR IMPLIED, RELATED TO THE EVALUATION BOARD INCLUDING, BUT NOT LIMITED TO, THE IMPLIED WARRANTY OF MERCHANTABILITY, TITLE, FITNESS FOR A PARTICULAR PURPOSE OR NON-INFRINGEMENT OF INTELLECTUAL PROPERTY RIGHTS. IN NO EVENT WILL ADI AND ITS LICENSORS BE LIABLE FOR ANY INCIDENTAL, SPECIAL, INDIRECT, OR CONSEQUENTIAL DAMAGES RESULTING FROM CUSTOMER'S POSSESSION OR USE OF THE EVALUATION BOARD, INCLUDING BUT NOT LIMITED TO LOST PROFITS, DELAY COSTS, LABOR COSTS OR LOSS OF GOODWILL. ADI'S TOTAL LIABILITY FROM ANY AND ALL CAUSES SHALL BE LIMITED TO THE AMOUNT OF ONE HUNDRED US DOLLARS (\$100,000). EXPORT. Customer agrees that it will not directly or indirectly export the Evaluation Board to another country, and that it will comply with all applicable United States federal laws and regulations relating to exports. GOVERNING LAW. This Agreement shall be governed by and construed in accordance with the substantive laws of the Commonwealth of Massachusetts (excluding conflict of law rules). Any legal action regarding this Agreement will be heard in the state or federal courts having jurisdiction in Suffolk County, Massachusetts, and Customer hereby submits to the personal jurisdiction and venue of such courts. The United Nations Convention on Contracts for the International Sale of Goods shall not apply to this Agreement and is expressly disclaimed.

©2017 Analog Devices, Inc. All rights reserved. Trademarks and registered trademarks are the property of their respective owners.  
UG16135-0-8/17(0)



www.analog.com

# Mouser Electronics

Authorized Distributor

Click to View Pricing, Inventory, Delivery & Lifecycle Information:

[Analog Devices Inc.:](#)

[ADA4571R-EBZ](#) [EV-ADA4571RSDZ](#)