

FEATURES

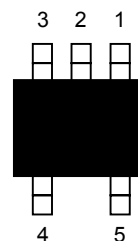
- Halts and restarts an out-of-control microprocessor
- Holds microprocessor in check during power transients
- Automatically restarts microprocessor after power failure
- Monitors pushbutton for external override
- Accurate 5%, 10%, or 20% (3V only) microprocessor power monitoring
- Eliminates the need for discrete components
- 20% tolerance for use with 3.0V systems
- Pin- and function-compatible with the MAX823/24/25 products
- Low cost SOT-23-5 package
- Industrial temperature range: -40°C to +85°C

| DEVICE | $\overline{\text{RST}}$ | RST | $\overline{\text{PBRST}}$ | WD |
|---------|-------------------------|--------------|---------------------------|-------------|
| DS181xA | X | | X | X |
| DS181xB | X | X | | X |
| DS181xC | X | X | X | |

x = "DS1814" for 5V devices

x = "DS1819" for 3V devices

PIN ASSIGNMENT



SOT-23-5 PACKAGE
See Mech. Drawing

PIN DESCRIPTION

DS181xA

- | | | |
|---|---------------------------|-------------------------|
| 1 | $\overline{\text{RST}}$ | Active Low Reset Output |
| 2 | GND | Ground |
| 3 | $\overline{\text{PBRST}}$ | Pushbutton Reset Input |
| 4 | $\overline{\text{ST}}$ | Strobe Input |
| 5 | VCC | Power Supply |

DS181xB

- | | | |
|---|-------------------------|--------------------------|
| 1 | $\overline{\text{RST}}$ | Active Low Reset Output |
| 2 | GND | Ground |
| 3 | RST | Active High Reset Output |
| 4 | $\overline{\text{ST}}$ | Strobe Input |
| 5 | VCC | Power Supply |

DS181xC

- | | | |
|---|---------------------------|--------------------------|
| 1 | $\overline{\text{RST}}$ | Active Low Reset Output |
| 2 | GND | Ground |
| 3 | RST | Active High Reset Output |
| 4 | $\overline{\text{PBRST}}$ | Pushbutton Reset Input |
| 5 | VCC | Power Supply |

DESCRIPTION

The DS1814 5-Volt MicroMonitor and the DS1819 3.3V MicroMonitor monitor three vital conditions for a microprocessor: power supply, software execution, and external override. First, a precision temperature-compensated reference and comparator circuit monitor the status of V_{CC} . When an out-of-tolerance condition occurs, an internal power-fail signal is generated which forces the reset(s) to an active state. When V_{CC} returns to an in-tolerance condition, the reset signal is kept in the active state for a minimum of 140ms to allow the power supply and processor to stabilize.

The DS1814/DS1819 'A' and 'C' perform pushbutton reset control. They debounce the pushbutton input and generate an active reset pulse width of 140ms minimum. The DS1814/9 'A' and 'B' versions perform a watchdog function. The watchdog is an internal timer that forces the reset signals to the active state if the strobe input does not change state every 1.12 seconds. The watchdog timer function can be disabled by leaving the watchdog strobe input disconnected.

OPERATION

Power Monitor

The DS1814 detects out-of-tolerance power supply conditions and warns a processor-based system of impending power failure. When V_{CC} falls below a preset level, a comparator outputs the signal \overline{RST} (or RST). \overline{RST} (or RST) are excellent control signals for a microprocessor, as processing is stopped at the last possible moment of valid V_{CC} . On power-up, \overline{RST} (or RST) are kept active for a minimum of 140ms to allow the power supply and processor to stabilize.

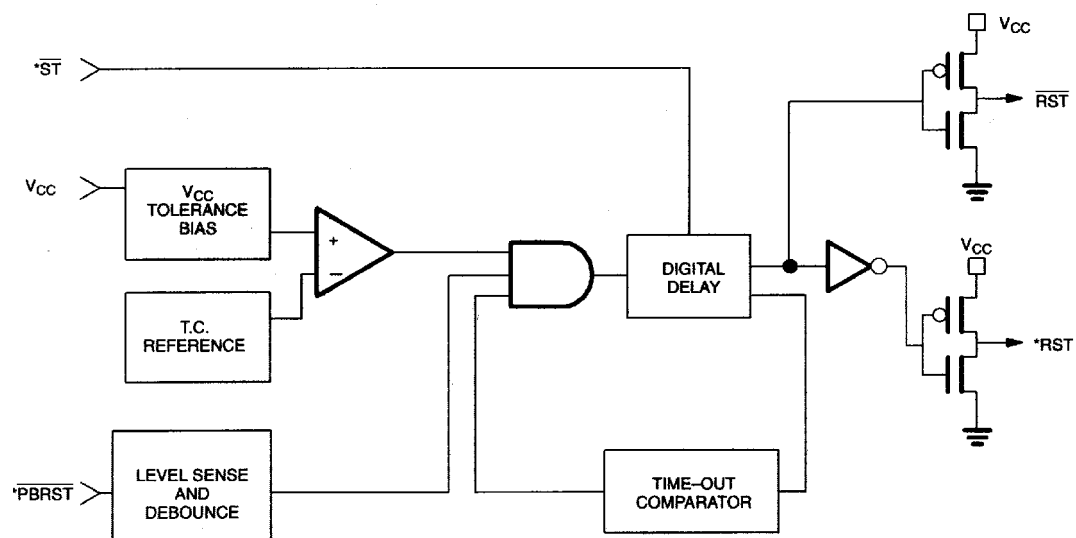
Pushbutton Reset

The DS1814 'A' and 'C' provide an input pin for direct connection to a pushbutton reset (see Figure 2). The pushbutton reset input requires an active low signal. Internally, this input is debounced and timed such that a \overline{RST} (or RST) signal of at least 140ms minimum will be generated. The 140ms delay commences as the pushbutton reset input is released from the low level (see Figure 3).

Watchdog Timer

The DS1814/DS1819 'A' and 'B' versions watchdog timer function forces \overline{RST} (and RST) signal(s) active when the \overline{ST} input is not clocked within the 1.12 second watchdog time-out period. Time-out of the watchdog starts when \overline{RST} (and RST) become(s) inactive. If a transition occurs on the \overline{ST} input pin prior to time-out, the watchdog timer is reset and begins to time out again. If the watchdog timer is allowed to time out, then the reset output(s) will go active for 140ms. The watchdog can be disabled by floating (or tri-stating) the \overline{ST} input.

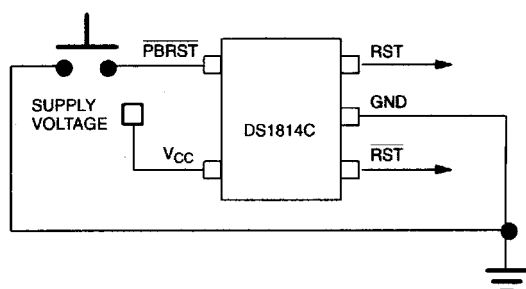
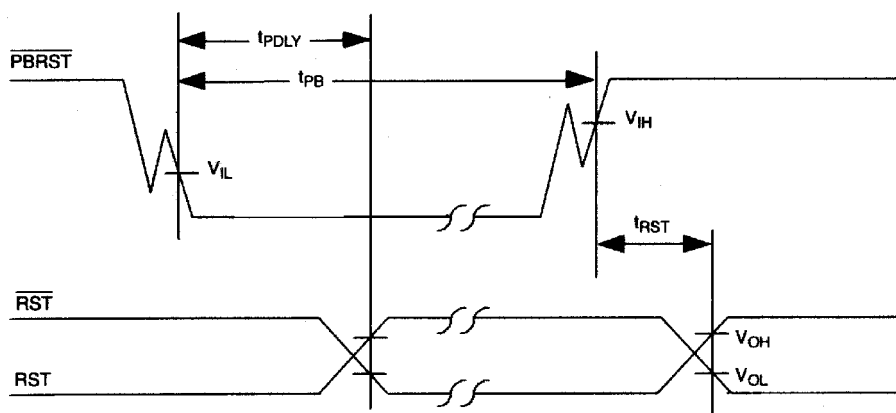
The \overline{ST} input can be derived from many microprocessor outputs. The most typical signals used are the microprocessor data I/O signals and control signals. When the microprocessor functions normally, these signals would as a matter of routine cause the watchdog to be reset prior to time-out. To guarantee that the watchdog timer does not time out, a transition must occur at or less than 1.12 seconds. A typical circuit example is shown in Figure 4. The DS1814/19 watchdog function can be disabled at any time by tri-starting the strobe input. A sample circuit to disable the watchdog is shown in Figure 6.

DS1814/DS1819 BLOCK DIAGRAM Figure 1***Notes:**

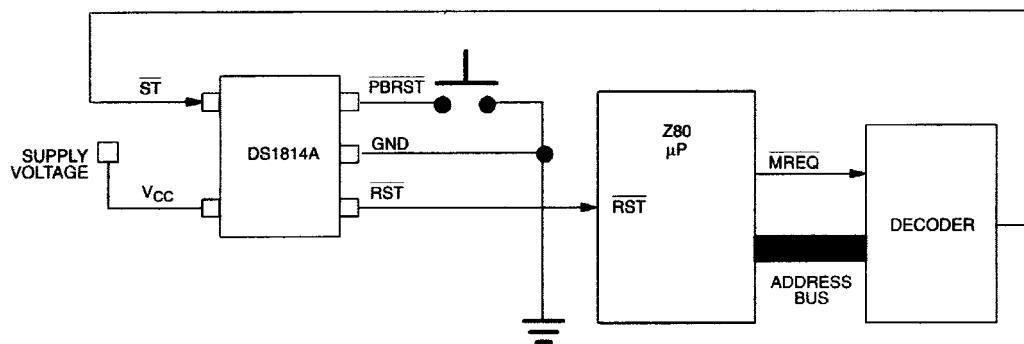
ST available on 'A' and 'B' versions

PBRST available on 'A' and 'C' versions

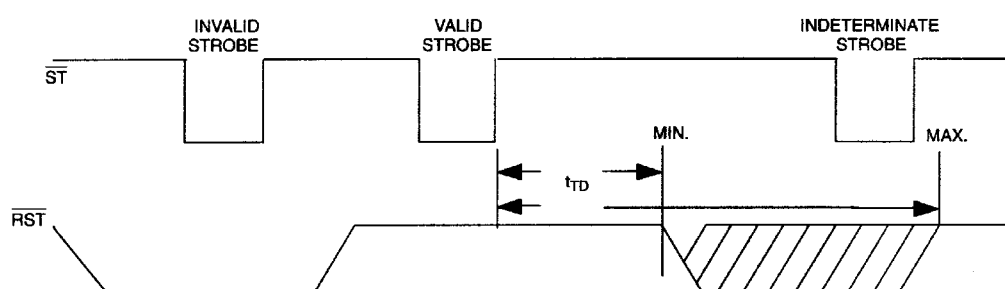
RST available on 'B' and 'C' versions

PUSHBUTTON RESET Figure 2**TIMING DIAGRAM: PUSHBUTTON RESET Figure 3**

WATCHDOG TIMER Figure 4



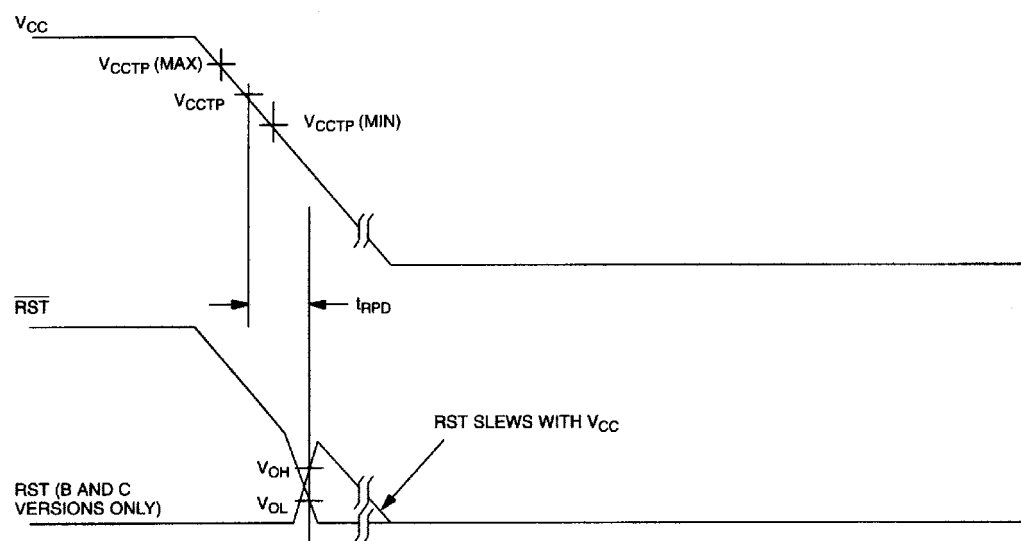
TIMING DIAGRAM: STROBE INPUT Figure 5



WATCHDOG DISABLE CIRCUIT Figure 6



TIMING DIAGRAM: POWER-DOWN Figure 7





5 of 8

ABSOLUTE MAXIMUM RATINGS*

| | |
|--|--------------------------|
| Voltage on V_{CC} Pin Relative to Ground | -0.5V to +7.0V |
| Voltage on I/O Relative to Ground | -0.5V to $V_{CC} + 0.5V$ |
| Operating Temperature Range | -40°C to +85°C |
| Storage Temperature Range | -55°C to +125°C |
| Soldering Temperature | 260°C for 10 seconds |

* This is a stress rating only and functional operation of the device at these or any other conditions above those indicated in the operation sections of this specification is not implied. Exposure to absolute maximum rating conditions for extended periods of time may affect reliability.

RECOMMENDED DC OPERATING CONDITIONS (-40°C to +85°C)

| PARAMETER | SYMBOL | MIN | TYP | MAX | UNITS | NOTES |
|---|----------|--------------|-----|--------------|-------|-------|
| Supply Voltage | V_{CC} | 1.0 | | 5.5 | V | 1 |
| \overline{ST} and \overline{PBRST} Input High Level | V_{IH} | 0.8 V_{CC} | | | V | 1 |
| \overline{ST} and \overline{PBRST} Input Low Level | V_{IL} | | | 0.3 V_{CC} | V | 1 |

DC ELECTRICAL CHARACTERISTICS (-40°C to +85°C; $V_{CC} = 1.2V$ to 5.5V)

| PARAMETER | SYMBOL | MIN | TYP | MAX | UNITS | NOTES |
|---|------------|-------------------|-------------------|------|---------|-------|
| V_{CC} Trip Point DS1814-5 | V_{CCTP} | 4.50 | | 4.75 | V | 1 |
| V_{CC} Trip Point DS1814-10 | V_{CCTP} | 4.25 | | 4.50 | V | 1 |
| V_{CC} Trip Point DS1819-5 | V_{CCTP} | 3.00 | | 3.15 | V | 1 |
| V_{CC} Trip Point DS1819-10 | V_{CCTP} | 2.85 | | 3.00 | V | 1 |
| V_{CC} Trip Point DS1819-20 | V_{CCTP} | 2.55 | | 2.70 | V | 1 |
| Reset Trip Point Hysteresis (DS1814) | V_{RH} | | 10 | | mV | |
| Reset Trip Point Hysteresis (DS1819) | V_{RH} | | 5 | | mV | |
| Output Current @ 2.4V | I_{OH} | | 350 | | μA | 3 |
| Output Current @ 0.4V | I_{OL} | 3.2 | 6 | | mA | 3 |
| Output Voltage @ -30 μA | V_{OH} | $V_{CC} \cdot .8$ | $V_{CC} \cdot .9$ | | V | 3 |
| Operating Current DS1814 | I_{CC} | | 10 | 15 | μA | 4 |
| Operating Current DS1819 | I_{CC} | | 8 | 12 | μA | 5 |
| \overline{ST} Input Current $\overline{ST} = V_{CC}$, Time Averaged | | | 120 | 160 | μA | 6 |
| \overline{ST} Input Current $\overline{ST} = GND$, Time Averaged | | -20 | -15 | | μA | 6 |

AC ELECTRICAL CHARACTERISTICS (-40°C to +85°C; $V_{CC} = 1.2V$ to $5.5V$)

| PARAMETER | SYMBOL | MIN | TYP | MAX | UNITS | NOTES |
|---|------------|------|------|------|------------|-------|
| $\overline{PBRST} = V_{IL}$ | t_{PB} | 1 | | | μs | 7 |
| Reset Active Time | t_{RST} | 140 | 200 | 280 | ms | |
| \overline{ST} Pulse Width | t_{ST} | 50 | | | ns | 8 |
| Watchdog Time-out | t_{TD} | 1.12 | 1.60 | 2.40 | s | |
| V_{CC} Detect to RST and \overline{RST} | t_{RPD} | | 30 | 40 | μs | 9 |
| V_{CC} Slew Rate (rising edge) | | | 12.5 | | V/ μs | |
| V_{CC} Detect to RST and \overline{RST} | t_{RPU} | 140 | 200 | 280 | ms | |
| \overline{PBRST} Stable Low to RST and \overline{RST} | t_{PDLY} | | 500 | | ns | |

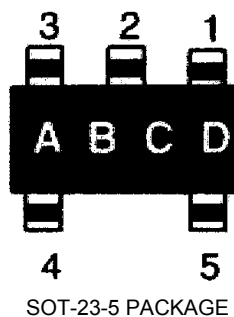
CAPACITANCE ($t_A = 25^\circ C$)

| PARAMETER | SYMBOL | MIN | TYP | MAX | UNITS | NOTES |
|--------------------|-----------|-----|-----|-----|-------|-------|
| Input Capacitance | C_{IN} | | | 5 | pF | |
| Output Capacitance | C_{OUT} | | | 7 | pF | |

NOTES:

- 1) All voltages are referenced to ground.
- 2) \overline{PBRST} is internally pulled up to V_{CC} with an internal impedance of 50k Ω typical.
- 3) Measured with $V_{CC} \geq 2.7V$.
- 4) Measured with outputs open, $V_{CC} \leq 5.5V$, and all inputs at V_{CC} or Ground, except the \overline{ST} input at <10kHz duty cycle-square wave or \overline{ST} input open.
- 5) Measured with outputs open, $V_{CC} \leq 3.6V$, and all inputs at V_{CC} or Ground, except the \overline{ST} input at <10kHz duty cycle-square wave or \overline{ST} input open.
- 6) The \overline{ST} input current is defined as the average input current when \overline{ST} is driven high or low. This input must be driven high or low by an output that can source or sink at least 200 μA when active.
- 7) Noise immunity: pulses <100ns at pushbutton input will not cause a reset.
- 8) Must not exceed t_{TD} minimum.
- 9) Noise immunity: pulses <2 μs at V_{CCTP} minimum will not cause a reset and $V_{CCTP} - V_{CC} = 100mV$.

PART MARKING CODES



‘A’, ‘B’ and ‘C’ represents the Device Type.

‘D’ represents the Device Tolerance.

| | | |
|-----|---|---------|
| 14A | - | DS1814A |
| 14B | - | DS1814B |
| 14C | - | DS1814C |
| 19A | - | DS1819A |
| 19B | - | DS1819B |
| 19C | - | DS1819C |

| | | |
|---|---|-----|
| A | - | 5% |
| B | - | 10% |
| C | - | 20% |

Mouser Electronics

Authorized Distributor

Click to View Pricing, Inventory, Delivery & Lifecycle Information:

[Analog Devices Inc.:](#)

[DS1819AR-10+T&R](#) [DS1819AR-20+T&R](#) [DS1819AR-5+T&R](#) [DS1819BR-10+T&R](#) [DS1819CR-10+T&R](#)
[DS1819CR-20+T&R](#) [DS1819CR-5+T&R](#) [DS1814AR-10+T&R](#) [DS1814AR-5+T&R](#) [DS1814BR-10+T&R](#) [DS1814BR-](#)
[5+T&R](#) [DS1814CR-10+T&R](#) [DS1814CR-5+T&R](#)