

## FEATURES

Accurate monitoring of up to four power supply voltages  
 2 factory-set threshold options for monitoring 1.8 V and 3.3 V  
 Adjustable input threshold voltage 0.62 V ( $\pm 1.5\%$  accuracy)  
 50 ms typical reset timeout  
 Open-drain RESET output (10  $\mu$ A internal pull-up)  
 Reset output stage: active low, valid to  $IN_1 = 1$  V or  $IN_2 = 1$  V  
 Power supply glitch immunity  
 Specified from  $-40^\circ\text{C}$  to  $+85^\circ\text{C}$   
 6-lead SOT-23 package

## APPLICATIONS

Telecommunications  
 Microprocessor systems  
 Desktop and notebook computers  
 Data storage equipment  
 Servers/workstations

## GENERAL DESCRIPTION

The **ADM8710** is a low voltage, high accuracy supervisory circuit. The device monitors up to four system supply voltages.

The **ADM8710** incorporates two internally pretrimmed under-voltage threshold options for monitoring 1.8 V and 3.3 V supply voltages. It also offers two adjustable inputs with 0.62 V internal reference, allowing users to program the reset threshold through external resistor dividers. The combination of pretrimmed and adjustable inputs gives the **ADM8710** the advantage of being both space saving and flexible.

## FUNCTIONAL BLOCK DIAGRAM

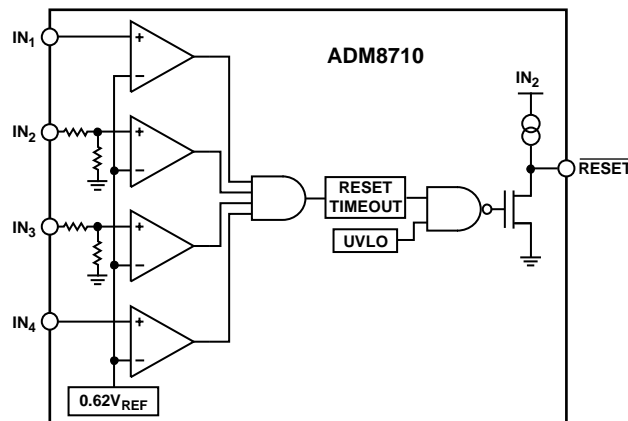


Figure 1.

10647-001

If a monitored power supply voltage falls below the minimum voltage threshold, a single active low output asserts, triggering a system reset. The output is open drain with a weak internal pull-up to the monitored  $IN_2$  supply of typically 10  $\mu$ A. When all voltages rise above the selected threshold level, the RESET signal remains low for the reset timeout period. The **ADM8710** output remains valid as long as  $IN_1$  or  $IN_2$  exceeds 1 V.

Unused monitored inputs should not be allowed to float or to be grounded. Instead, connect them to a supply voltage greater than their specified threshold voltages.

The **ADM8710** is available in a 6-lead SOT-23 package. The device operates over the extended temperature range of  $-40^\circ\text{C}$  to  $+85^\circ\text{C}$ .

### Rev. 0

Information furnished by Analog Devices is believed to be accurate and reliable. However, no responsibility is assumed by Analog Devices for its use, nor for any infringements of patents or other rights of third parties that may result from its use. Specifications subject to change without notice. No license is granted by implication or otherwise under any patent or patent rights of Analog Devices. Trademarks and registered trademarks are the property of their respective owners.

TABLE OF CONTENTS

Features .....	1	Theory of Operation .....	8
Applications .....	1	Input Configuration .....	8
Functional Block Diagram .....	1	RESET Output Configuration .....	8
General Description .....	1	Addition of Manual Reset .....	8
Revision History .....	2	Tolerance and Accuracy .....	9
Specifications .....	3	Model Options .....	10
Absolute Maximum Ratings .....	4	Outline Dimensions .....	11
ESD Caution .....	4	Ordering Guide .....	11
Pin Configuration and Function Descriptions .....	5		
Typical Performance Characteristics .....	6		

REVISION HISTORY

8/12—Revision 0: Initial Version

## SPECIFICATIONS

$V_{IN2} = 1\text{ V to }5.5\text{ V}$ ,  $T_A = -40^\circ\text{C to }+85^\circ\text{C}$ , unless otherwise noted. Typical values are  $V_{IN2} = 3.0\text{ V to }3.3\text{ V}$ ,  $T_A = 25^\circ\text{C}$ .

Table 1.

Parameter	Min	Typ	Max	Units	Test Conditions/Comments
OPERATING VOLTAGE RANGE					
$V_{IN2}$ <sup>1</sup>	1.0		5.5	V	$T_A = 0^\circ\text{C to }85^\circ\text{C}$
	1.2		5.5	V	$T_A = -40^\circ\text{C to }+85^\circ\text{C}$
INPUT CURRENT					
$IN_x$ Input Current		55	115	$\mu\text{A}$	$IN_2 = \text{nominal input voltage (3.3 V supplies); the supply splits into } 25\text{ }\mu\text{A for the resistor divider and } 30\text{ }\mu\text{A for other circuits}$
		25	40	$\mu\text{A}$	$IN_3 = \text{nominal input voltage (1.8 V supplies)}$
			0.4	$\mu\text{A}$	$V_{IN1} = 0\text{ V to }0.85\text{ V}$
			0.2	$\mu\text{A}$	$V_{IN4} = 0\text{ V to }0.85\text{ V}$
THRESHOLD VOLTAGE					
Threshold Voltage ( $V_{TH}$ )	3.010	3.07	3.130	V	$IN_x$ decreasing; 3.3 V (–5% supply tolerance)
	1.705	1.73	1.760	V	$IN_x$ decreasing; 1.8 V (–2% supply tolerance)
Adjustable Input Threshold Voltage ( $V_{TH}$ )	0.611	0.62	0.629	V	$IN_x$ decreasing
RESET					
Reset Threshold Hysteresis ( $V_{HYST}$ )		0.3		$\%V_{TH}$	$IN_x$ increasing relative to $IN_x$ decreasing
Reset Threshold Temperature Coefficient ( $TCV_{TH}$ )		60		$\text{ppm}/^\circ\text{C}$	
$IN_x$ to Reset Delay ( $t_{RP}$ )		30		$\mu\text{s}$	$V_{IN}$ falling at 10 mV/ $\mu\text{s}$ from $V_{TH}$ to $V_{TH} - 50\text{ mV}$
Reset Timeout Period ( $t_{RP}$ )	35	50	70	ms	
$\overline{\text{RESET}}$ Output Low ( $V_{OL}$ )			0.3	V	$V_{IN2} = 5\text{ V}$ , $I_{SINK} = 2\text{ mA}$
			0.4	V	$V_{IN2} = 2.5\text{ V}$ , $I_{SINK} = 1.2\text{ mA}$
			0.3	V	$V_{IN2} = 1.0$ , $I_{SINK} = 20\text{ }\mu\text{A}$ , $T_A = 0^\circ\text{C to }+85^\circ\text{C}$
$\overline{\text{RESET}}$ Output High ( $V_{OH}$ )	$0.8 \times V_{IN2}$			V	$V_{IN2} \geq 2.0\text{ V}$ , $I_{SOURCE} = 4\text{ }\mu\text{A}$ , $\overline{\text{RESET}}$ deasserted
$\overline{\text{RESET}}$ Output High Source Current ( $I_{OH}$ )		10		$\mu\text{A}$	$V_{IN2} \geq 2.0\text{ V}$ , $\overline{\text{RESET}}$ deasserted

<sup>1</sup> The  $\overline{\text{RESET}}$  output is guaranteed to be in the correct state for  $IN_1$  or  $IN_2$  down to 1 V.

## ABSOLUTE MAXIMUM RATINGS

Table 2.

Parameter	Rating
$I_{N_x}$ $\overline{\text{RESET}}$ to GND	–0.3 V to +6 V
Continuous $\overline{\text{RESET}}$ Current	20 mA
Storage Temperature Range	–65°C to +125°C
Operating Temperature Range	–40°C to +85°C
Lead Temperature (10 sec)	300°C
Junction Temperature	135°C

Stresses above those listed under Absolute Maximum Ratings may cause permanent damage to the device. This is a stress rating only; functional operation of the device at these or any other conditions above those indicated in the operational section of this specification is not implied. Exposure to absolute maximum rating conditions for extended periods may affect device reliability.

Table 3. Thermal Resistance

Package Type	$\theta_{JA}$	Unit
6-lead SOT-23	169.5	°C/W

### ESD CAUTION


**ESD (electrostatic discharge) sensitive device.**

Charged devices and circuit boards can discharge without detection. Although this product features patented or proprietary protection circuitry, damage may occur on devices subjected to high energy ESD. Therefore, proper ESD precautions should be taken to avoid performance degradation or loss of functionality.

## PIN CONFIGURATION AND FUNCTION DESCRIPTIONS

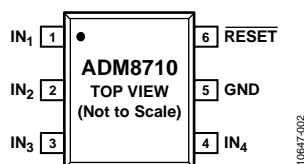


Figure 2. Pin Configuration

Table 4. Pin Function Descriptions

Pin No.	Mnemonic	Description
1	IN <sub>1</sub>	Input Voltage 1.
2	IN <sub>2</sub>	Input Voltage 2.
3	IN <sub>3</sub>	Input Voltage 3.
4	IN <sub>4</sub>	Input Voltage 4.
5	GND	Ground.
6	$\overline{\text{RESET}}$	Active Low $\overline{\text{RESET}}$ Output. $\overline{\text{RESET}}$ goes low when an input drops to less than the specified threshold. When all inputs rise higher than the threshold voltage, $\overline{\text{RESET}}$ remains low for the reset timeout period before going high. $\overline{\text{RESET}}$ is open drain with a weak internal pull-up to IN <sub>2</sub> .

## TYPICAL PERFORMANCE CHARACTERISTICS

$V_{IN2} = 3.0\text{ V}$ ,  $T_A = 25^\circ\text{C}$ , unless otherwise noted.

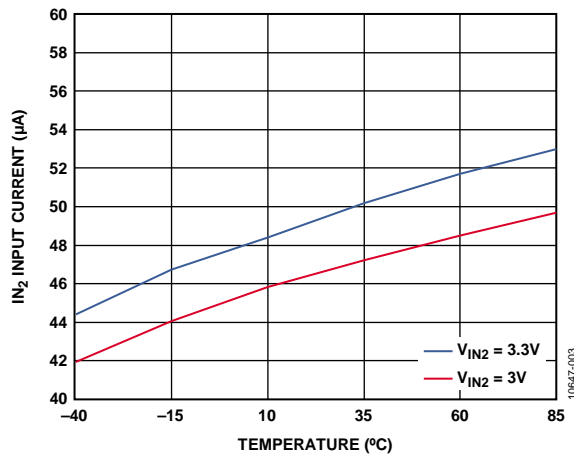


Figure 3.  $IN_2$  Input Current vs. Temperature

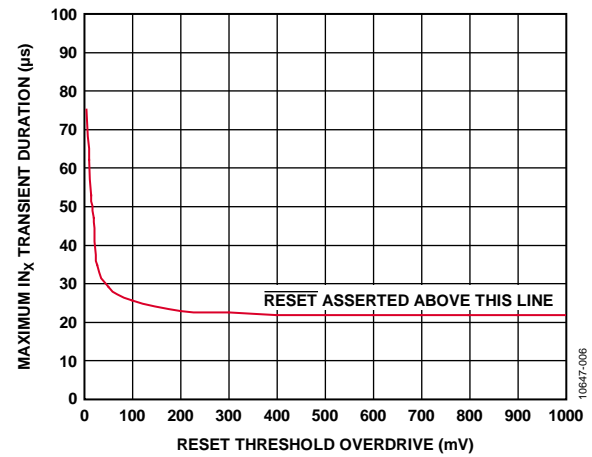


Figure 6. Maximum  $IN_x$  Transient Duration vs. Reset Threshold Overdrive

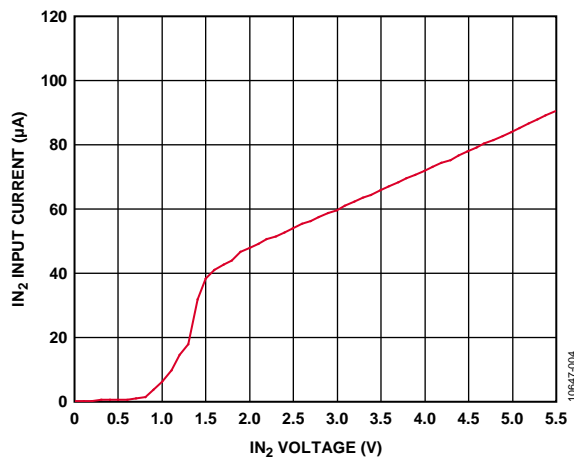


Figure 4.  $IN_2$  Input Current vs.  $IN_2$  Voltage

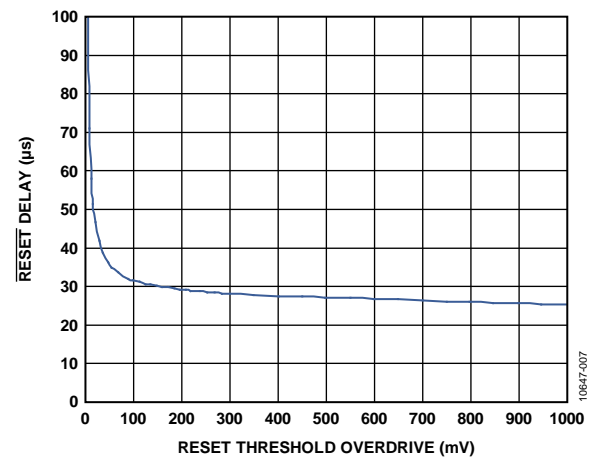


Figure 7.  $\overline{\text{RESET}}$  Delay vs. Reset Threshold Overdrive ( $IN_x$  Decreasing)

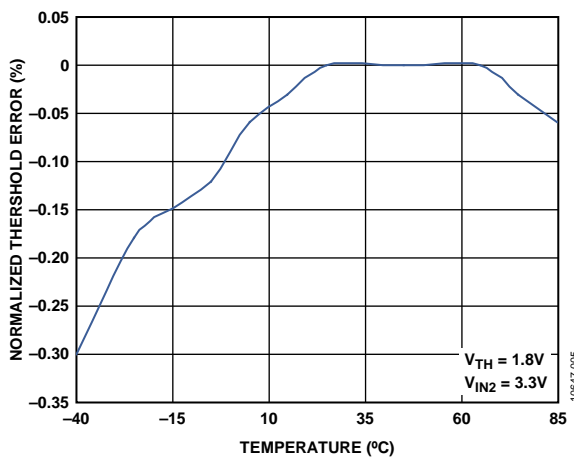


Figure 5. Normalized Threshold Error vs. Temperature

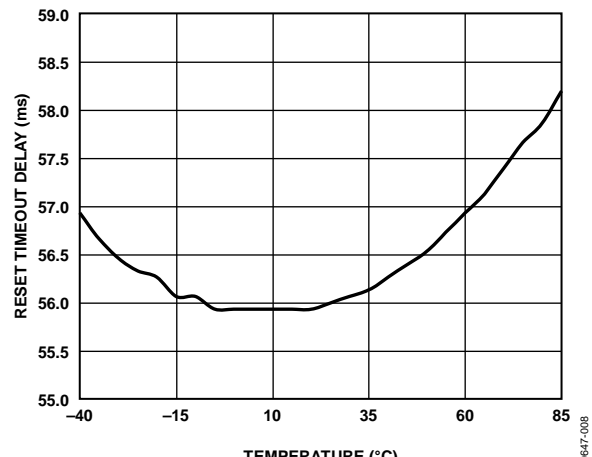


Figure 8. Normalized Reset Timeout Delay vs. Temperature

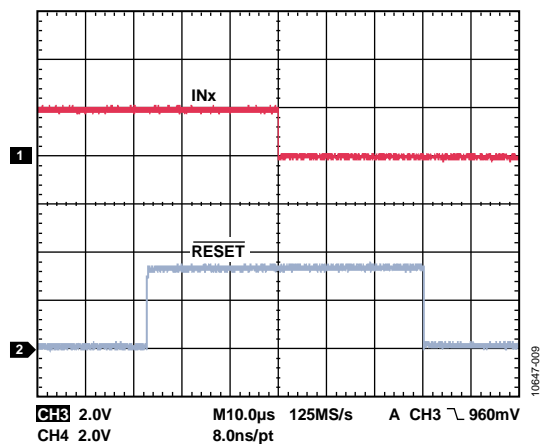
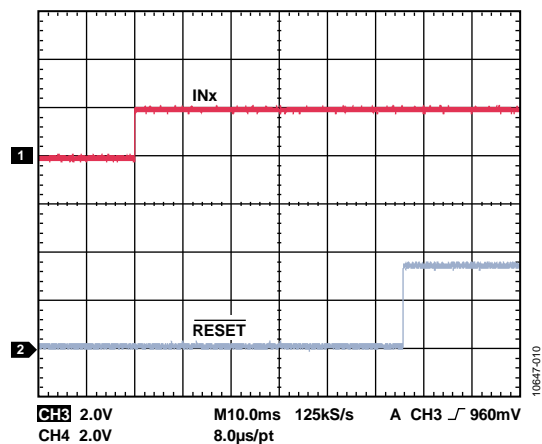
Figure 9.  $\overline{\text{RESET}}$  Pull-Up and Pull-Down Response (10 µs/DIV)

Figure 10. Timeout Delay (10 ms/DIV)

## THEORY OF OPERATION

The ADM8710 is a compact, low power supervisory circuit capable of monitoring up to four voltages in a multisupply application.

The device includes two factory-set voltage threshold options for monitoring 1.8 V and 3.3 V supplies. It also provides two adjustable thresholds for monitoring voltages down to 0.62 V.

The ADM8710 is powered by  $IN_2$ , which is a monitored voltage, and therefore monitors up to four voltages. If a monitored voltage drops below its associated threshold, the active low reset output asserts low and remains low while either  $IN_1$  or  $IN_2$  remains above 1.0 V.

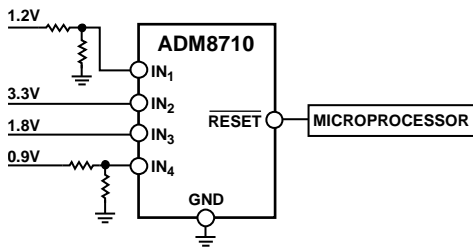


Figure 11. Typical Applications Circuit

## INPUT CONFIGURATION

The ADM8710 provides numerous monitor choices with adjustable reset thresholds. Typically, the threshold voltage at each adjustable  $IN_x$  input is 0.62 V. To monitor a voltage greater than 0.62 V, connect a resistor divider network to the circuit as depicted in Figure 12, where

$$V_{INTH} = 0.62 V \left( \frac{R1 + R2}{R2} \right)$$

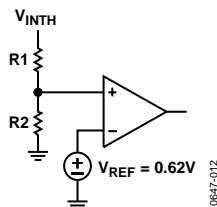


Figure 12. Setting the Adjustable Monitor

The internal comparators each typically have a hysteresis of 0.3% with respect to the reset threshold. This built-in hysteresis improves the immunity of the device to ambient noise without noticeably reducing the threshold accuracy. The ADM8710 is unaffected by short input transients.

The ADM8710 is powered from the monitored  $IN_2$ . Monitored inputs are resistant to short power supply glitches. Figure 6 depicts the ADM8710 glitch immunity data. To increase noise immunity in noisy applications, place a 0.1  $\mu$ F capacitor between the  $IN_2$  input and ground. Adding capacitance to  $IN_1$ ,  $IN_3$ , and  $IN_4$  also improves noise immunity.

Do not allow unused monitor inputs to float or to be grounded. Connect these inputs to a supply voltage greater than their specified threshold voltages. In the case of unused  $IN_x$  adjustable inputs, limit the bias current by connecting a 1 M $\Omega$  series resistor between the unused input and  $IN_2$ .

## RESET OUTPUT CONFIGURATION

The  $\overline{\text{RESET}}$  output asserts low when a monitored  $IN_x$  voltage drops below its voltage threshold. When all voltages rise above the selected threshold level, the  $\overline{\text{RESET}}$  signal remains low for the reset timeout period. The  $\overline{\text{RESET}}$  output is open drain with a weak internal pull-up to the monitored  $IN_2$ , typically 10  $\mu$ A.

Many applications that interface with other logic devices do not require an external pull-up resistor. However, if an external pull-up resistor is required and it is connected to a voltage ranging from 0 V to 5.5 V, it overdrives the internal pull-up. Reverse current flow from the external pull-up voltage to  $IN_2$  is prevented by the internal circuitry.

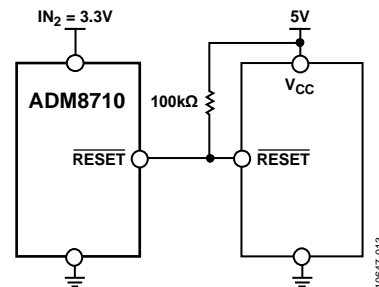


Figure 13. Interface with a Different Logic Supply Voltage

## ADDITION OF MANUAL RESET

Use the circuit shown in Figure 14 to add manual reset to any of the ADM8710 adjustable inputs. When the switch is closed, the analog input shorts to ground and a  $\overline{\text{RESET}}$  output commences. The switch must remain open for a minimum of 35 ms for the  $\overline{\text{RESET}}$  output to deassert.

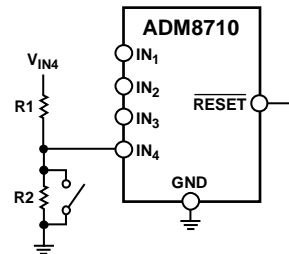


Figure 14. Addition of Manual Reset ( $IN_4$  is an Adjustable Input)



## TOLERANCE AND ACCURACY

The primary function of the voltage supervisor is to keep the processor in a reset state whenever the processor supply voltage is below the specification limit. It needs to be able to differentiate the voltage out-of-processor limit from supply variations caused by voltage converter output tolerance. This means that the supervisor rest threshold should fit inside the narrow band between processor input tolerance and supply tolerance.

The ADM8710 offers up to  $\pm 2\%$  accuracy on factory trimmed monitoring thresholds and  $\pm 1.5\%$  accuracy on adjustable thresholds over the entire operating temperature range.

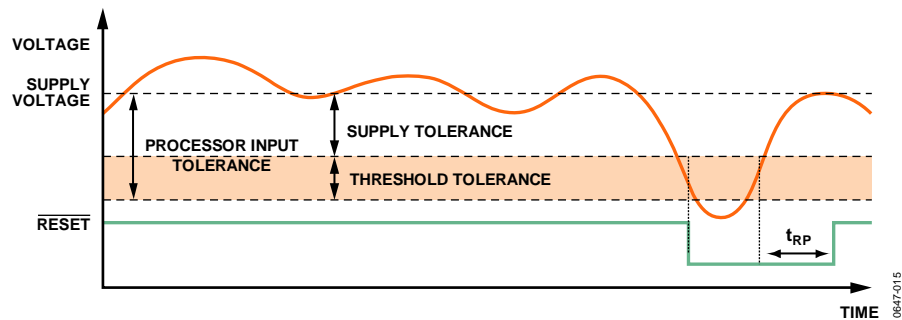


Figure 15. Tighter Threshold Tolerance on Voltage Supervisor Reduces Accuracy Requirement on Monitored Supply

## MODEL OPTIONS

Table 5. Reset Voltage Threshold Options

Reset Threshold Code <sup>1</sup>	IN <sub>1</sub>		IN <sub>2</sub>		IN <sub>3</sub>		IN <sub>4</sub>	
	Nominal Input Voltage (V)	Supply Tolerance (%)	Nominal Input Voltage (V)	Supply Tolerance (%)	Nominal Input Voltage (V)	Supply Tolerance (%)	Nominal Input Voltage (V)	Supply Tolerance (%)
L	Adjustable	Not applicable	3.3	–5	1.8	–2	Adjustable	Not applicable

<sup>1</sup> Adjustable voltage based on 0.62 V internal threshold. The external threshold voltage can be set using an external resistor divider.

Table 6. Reset Timeout Options

Reset Timeout Period Code <sup>1</sup>	T <sub>A</sub> = –40°C to +85°C			Unit
	Min	Typ	Max	
ADM8710x2	35	50	70	ms

<sup>1</sup> x = do not care.

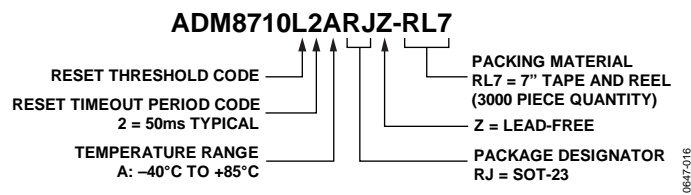
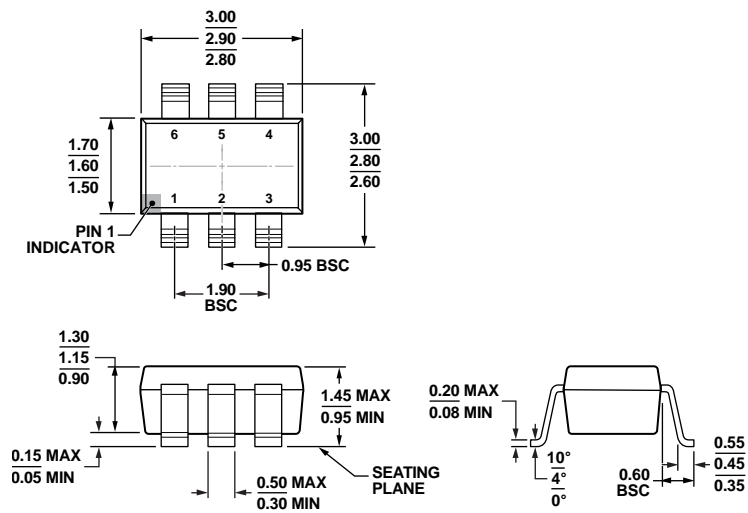


Figure 16. ADM8710 Ordering Code Structure

## OUTLINE DIMENSIONS



COMPLIANT TO JEDEC STANDARDS MO-178-AB

Figure 17. 6-Lead Small Outline Transistor Package [SOT-23]  
(RJ-6)

Dimensions shown in millimeters

12-16-2008-A

## ORDERING GUIDE

Model <sup>1, 2</sup>	Monitored Input Voltage (V)				Minimum Reset Timeout (ms)	Temperature Range	Ordering Quantity	Package Description	Package Option	Branding
	IN <sub>1</sub>	IN <sub>2</sub>	IN <sub>3</sub>	IN <sub>4</sub>						
ADM8710L2ARJZ-RL7	Adj.	3.07	1.73	Adj.	35	-40°C to +85°C	3,000	6-Lead SOT-23	RJ-6	LN3

<sup>1</sup> Z = RoHS Compliant Part.

<sup>2</sup> Adjustable voltage based on 0.62 V internal threshold. The external threshold voltage can be set using an external resistor divider.

**NOTES**

# Mouser Electronics

Authorized Distributor

Click to View Pricing, Inventory, Delivery & Lifecycle Information:

[Analog Devices Inc.:](#)

[ADM8710L2ARJZ-RL7](#)