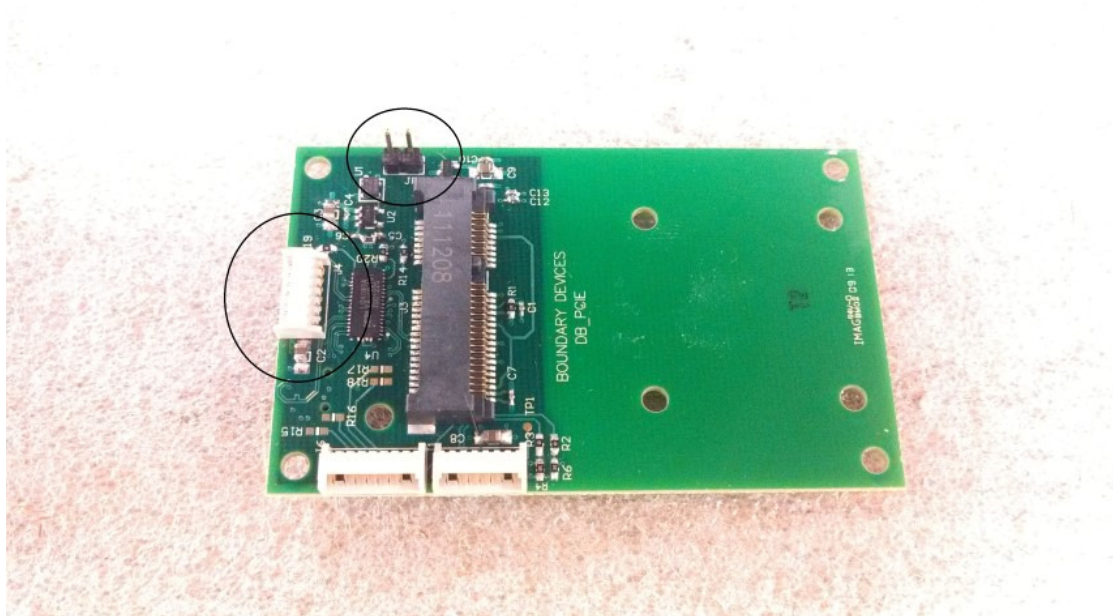
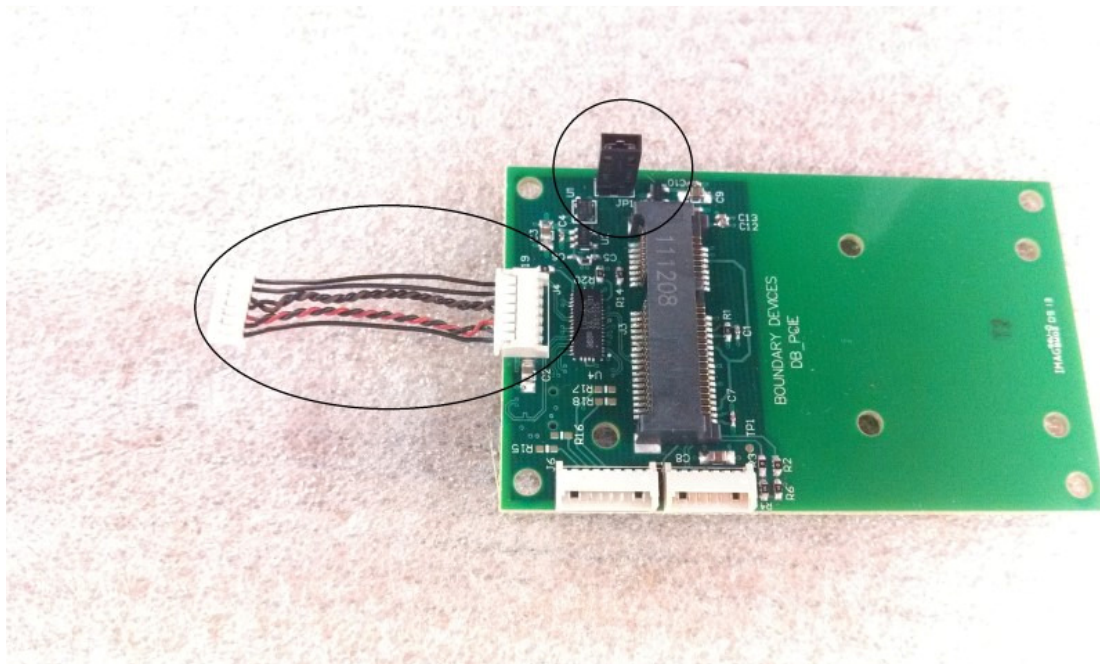


The PCIe daughter board has been updated to work with the Nitrogen6X and the SABRE Lite board. The Nitrogen6X has a board to board connector and receives the PCIe clock from the i.MX6 processor whereas the SABRE Lite uses an on-board clock.

Nitrogen6X settings (No jumper, no cable):



SABRE Lite/BD-SL-i.MX6. The cable must be plugged in with the orientation below, and requires a jumper to be installed.



# Mouser Electronics

Authorized Distributor

Click to View Pricing, Inventory, Delivery & Lifecycle Information:

Boundary Devices:

[Nit6X\\_PCIE](#)