

SEALED DOME PUSHBUTTONS

P7-D
DOME
PUSHBUTTONS

MOMENTARY ACTION, ATTRACTIVE & RUGGED FOR WET & DUSTY ENVIRONMENTS

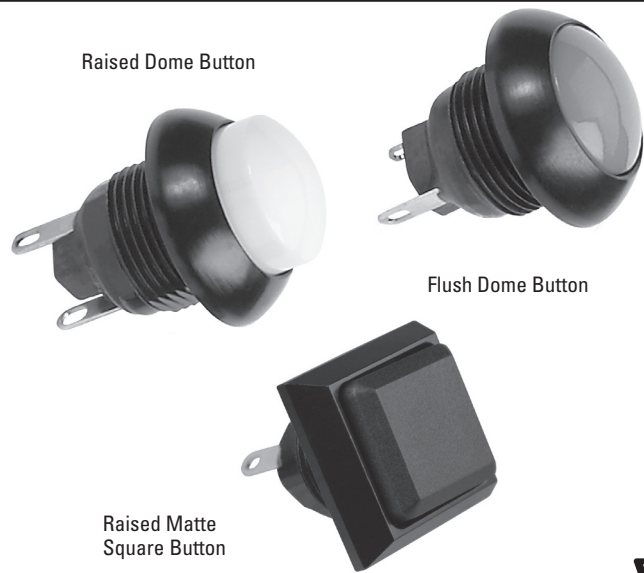
The P7-D pushbutton is a double break, momentary switch with a contoured dome style round or square pushbutton. Button versions include flush or raised round in glossy finish and raised square in matte finish. The P7-D features a shorter behind panel depth, dusttight and moistureproof sealed construction, and an excellent mechanical and electrical performance while operating under the most severe conditions. Its cycle life is one million operations at logic level and 50,000 at full rated load of 5 amps resistive or 3 amps inductive.

The P7-D's positive tactile feedback signals the operator when the switch is operated. Multiple contact variations are available as well as a variety of special order button legends. The high contact pressure and unique contact design provides low contact resistance for logic level switching capability as well as full rated service.

This quality precision snap-action switch is designed for use in instrument panels, grips, computers, heavy equipment and other applications where attractive rugged pushbutton switches are required.

Features:

- Flush or raised round button in glossy finish and raised square button in matte finish available in a variety of colors
- Logic level switching capability
- High contact pressure
- 6 circuit variations
- Positive tactile feedback
- Variety of mounting styles
- Constructed in accordance with MIL-PRF-8805/110 (no QPL)
- UL recognized
- Dusttight to IP64 & MIL-PRF-8805 Design 2, or watertight to IP68S
- RoHS compliant



Standard Characteristics/Ratings:

ELECTRICAL RATINGS: Sea Level @ 28VDC or 115VAC, 60/400Hz		
Load	N.O./N.C.	Life Cycles
Resistive	1A	50,000
Resistive	5A	50,000
Inductive	3A	50,000
DWV	1050Vrms	
Logic Level	10mA @ 5VDC	1,000,000
Electrical Life: See Rating Chart		
Mechanical Life: 1,000,000 cycles		
Seal: IP64, MIL-PRF-8805 Design 2, IP68S or MIL-PRF-8805 Design 3		
Operating Temp Range: -55°C to +85°C		
Operating Force: 1.7 +/- 0.5 lb. (standard force)		
Total Travel: 0.080 inches max		
MATERIALS:		
Case: Anodized aluminum alloy		
Button: Thermoplastic		
Contacts: Brass with gold over silver		
Terminal Hardware: None provided		
Mounting Hardware: Hex nut, lockwasher and panel seal on watertight versions		

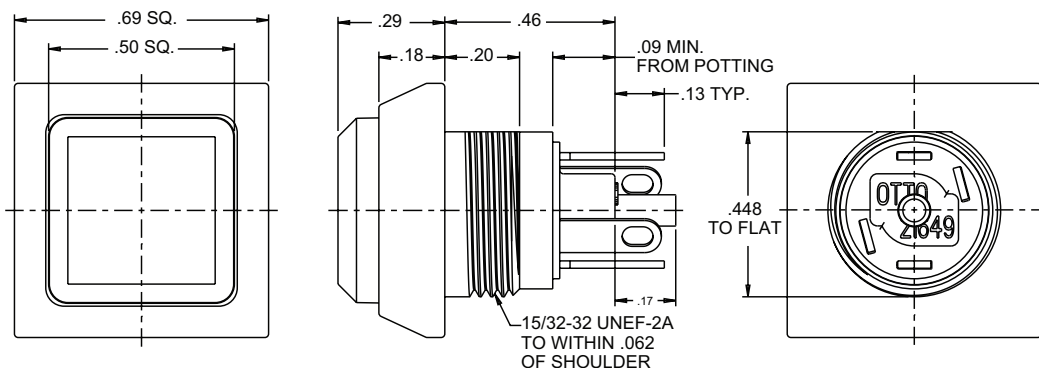
P7-D PART NUMBER CODE

P7-D	X	X	X	X	X
Button Style	Terminal Style/ Construction Grade	Circuit Form	Contact Rating	Bezel Color	Button Color
1. Flush Round Gloss 2. Flush Round Matte 3. Raised Round Gloss 4. Raised Round Matte 5. Raised Square Matte	1. Std. Commercial Solder 2. Std. Watertight Commercial Solder 3. Solder/Military/Short 4. Solder/Commercial/Short 5. Solder/Mil. Watertight/Short 6. PC Pin/Commercial 7. PC Pin/Military 8. PC Pin/Mil. Watertight 9. Solder/Com. Watertight/Short 10. PC Pin/Com. Watertight	1. N.O. 2. N.C. 3. N.C. 3 Terminal 4. N.O. 3 Terminal 5. 5 Terminal 6. 2 Circuit	1. Standard 2. Logic Level	1. Clear 2. Black	1. Red 2. Black 3. Orange 4. Yellow 5. Green 6. Blue 7. Purple 8. Gray 9. White

MOMENTARY ACTION, ATTRACTIVE & RUGGED FOR WET & DUSTY ENVIRONMENTS

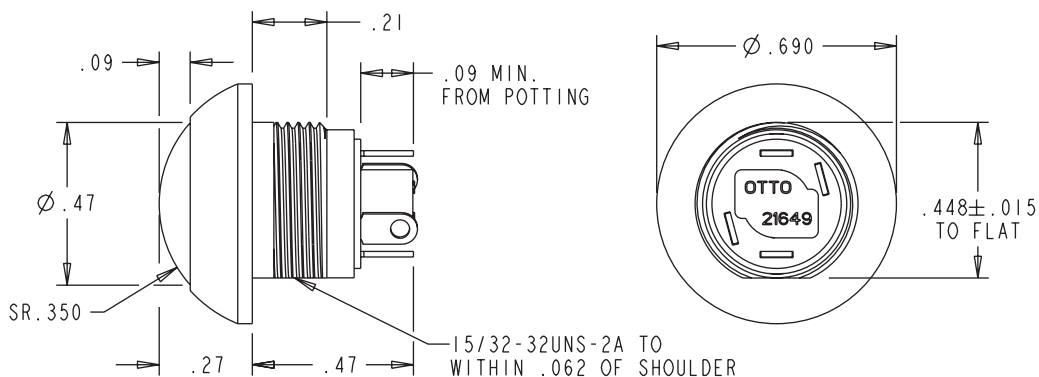
P7-D5A Series

Commercial Grade
Solder Terminals
Square Button



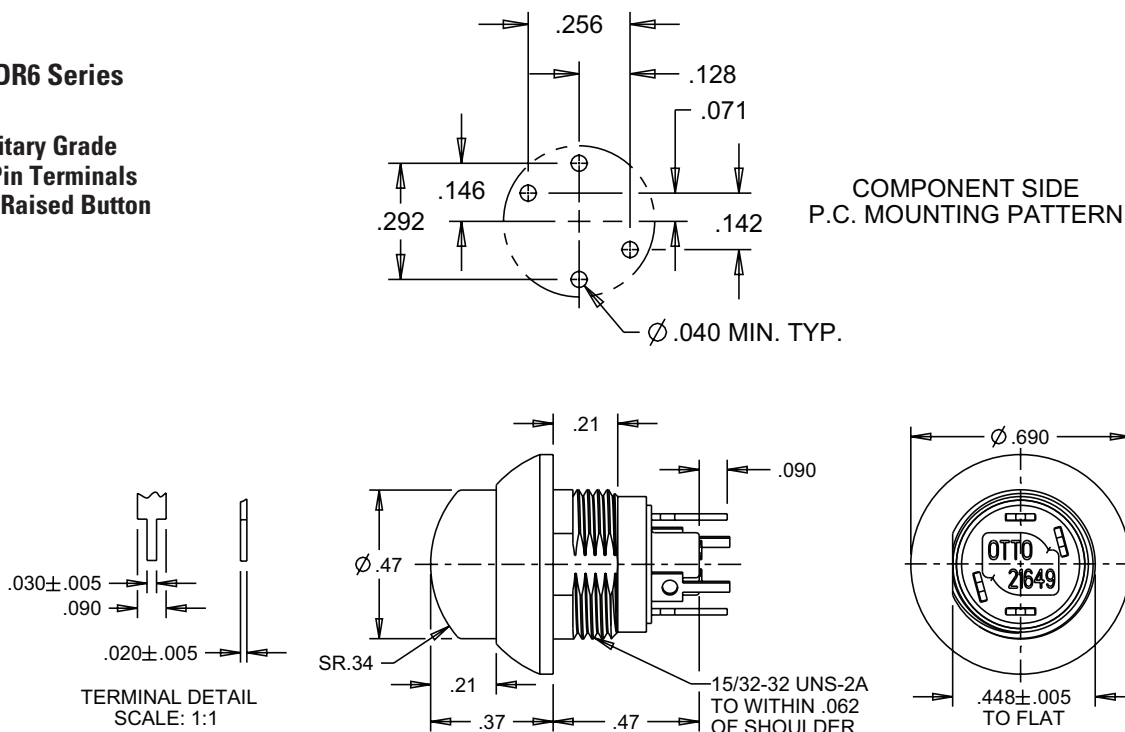
P7-DF1 Series

Military Grade
Short Solder Terminals
Round Flush Button



P7-DR6 Series

Military Grade
P.C. Pin Terminals
Round Raised Button



Mouser Electronics

Authorized Distributor

Click to View Pricing, Inventory, Delivery & Lifecycle Information:

OTTO:

[P7-D211121](#) [P7-D211122](#) [P7-D211125](#) [P7-D211126](#) [P7-D231122](#) [P7-D271122](#) [P7-D271222](#) [P7-D276121](#) [P7-D276122](#) [P7-D276125](#) [P7-D2A1122](#) [P7-D2A1125](#) [P7-D2B1121](#) [P7-D2B1122](#) [P7-D2B1125](#) [P7-D2B1126](#) [P7-D2B6122](#) [P7-D481222](#) [P7-D4A1122](#) [P7-D5A1229](#) [P7-D5B1126](#) [P7-D5B1128](#) [P7-D5B6121](#) [P7-D274122](#) [P7-D411126](#) [P7-DF86128](#) [P7-D271121](#) [P7-D271125](#) [P7-D271128](#) [P7-D4A1221](#) [P7-DF31126](#) [P7-DF35222](#) [P7-DRB1128](#) [P7-DF00001](#) [P7-DF00004](#) [P7-DF00009-1](#) [P7-DR00001](#) [P7-DR00011](#) [P7-DR00013](#)