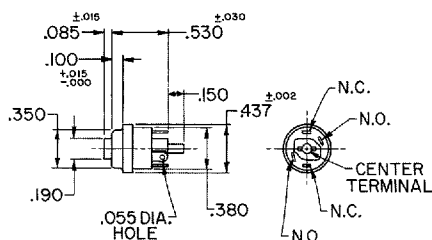


P7-1 Series

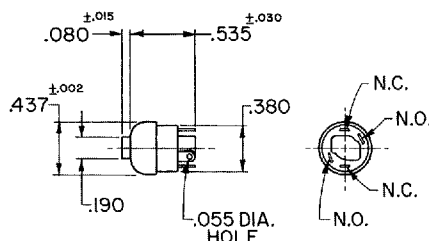
Case Style 1
Press-fit Mount



Also available with P.C. terminals

P7-2 Series

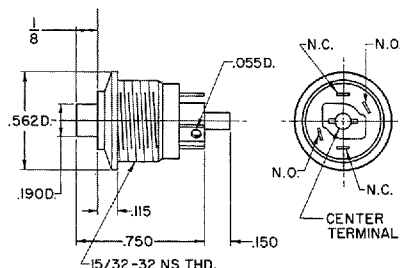
Case Style 2
Press-fit Mount



Also available with P.C. Pins

P7-3 Series

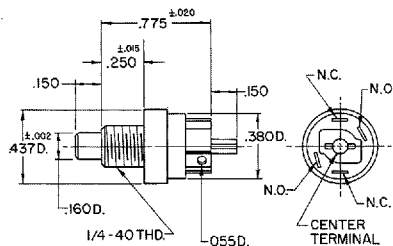
Case Style 3
Bezel/Threaded Bushing



Also available with P.C. Pins

P7-5

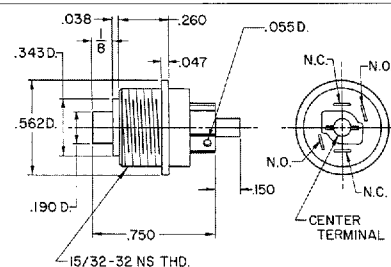
Case Style 5
1/4" Threaded Bushing



Also available with P.C. Pins

P7-6 Series

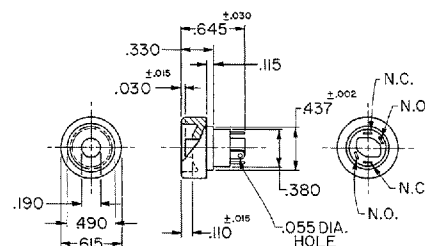
Case Style 6
15/32" Threaded Bushing



Also available with P.C. Pins

P7-7 Series

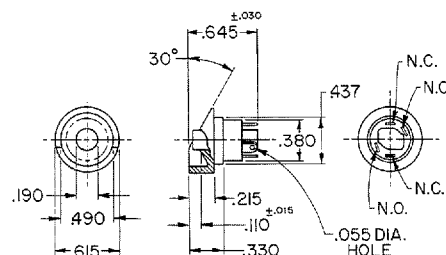
Case Style 7
Press-fit Mount



Also available with P.C. Pins

P7-8 Series

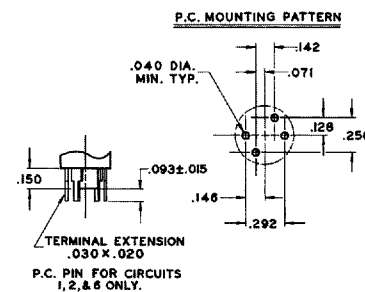
Case Style 8
Press-fit mount, Guarded button



Also available with P.C. Pins

P.C. Pin Mounting Pattern

(As viewed from switch bottom. See above drawings for terminal identification.)



Ordering Information

Select the OTTO P7 series switch to match your application requirements. Combinations of features are almost unlimited. When ordering, specify the OTTO part number.

Example of building an OTTO part number:

P7-515129 specifies case style 5 (1/4"-40 Thd bushing), Military grade construction, solder terminals, 5-terminal contact configuration, standard rating, black housing and white button. For a complete cross-reference of Military to OTTO part numbers, see pages 69 through 71.

① Specials are serialized. Subsequent numbers do not specify standard features.

P7 PART NUMBER CODE

Use these codes to specify the characteristics required for your application

P7- X X X X X X

Case Style	Terminal Style/Construction Grade	Circuit Form	Contact Rating	Bezel Color Button Dia.	Button Color
1. Style 1	0. Special ①	1. N.O.	1. Standard	1. Silver-Std	1. Red
2. Style 2	1. Solder/Military	2. N.C.	2. Low Level	2. Black-Std	2. Black
3. Style 3	2. Solder/Commercial	3. N.C. 3-Terminal		3. Silver-.312	3. Orange
5. Style 5	3. Solder/MIL. Waterproof	4. N.O. 3-Terminal		4. Black-.312	4. Yellow
6. Style 6	4. P.C. Pin/Commercial	5. 5-Terminal			5. Green
7. Style 7	5. P.C. Pin/Military	6. Two Circuit			6. Blue
8. Style 8	6. P.C. Pin/MIL. Waterproof				7. Purple
	7. Solder/Com. Waterproof				8. Gray
	8. P.C. Pin/Com. Waterproof				9. White

FEATURES:

- Low level switching capability.
- Low contact resistance: .025 ohms max.
- High contact pressure.
- Six circuit variations.
- Positive tactile feedback.
- Variety of mounting styles.
- Sealed against dust and moisture.
- Qualified to MIL-S-8805/110

The P7 Series incorporates the patented OTTO double-break design in an even smaller package than ever before available. Patterned after the environmental characteristics and mounting styles of the OTTO P1 Series, this subminiature series provides the packaging density many of today's designers are looking for.

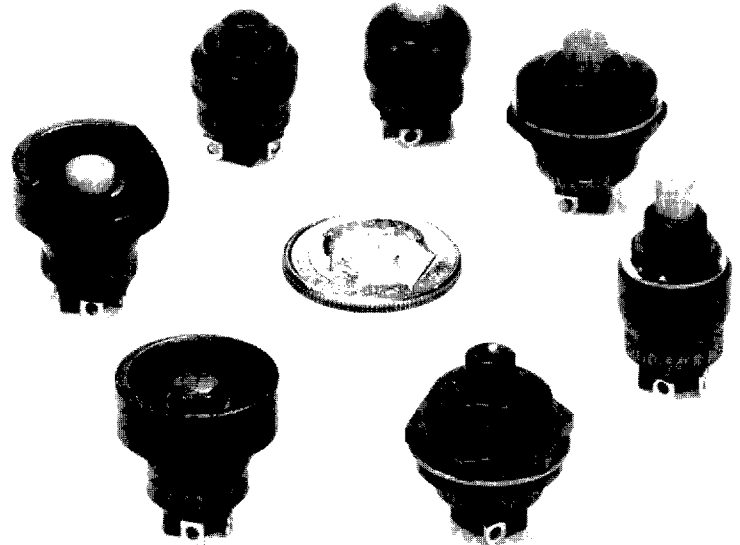
The long life snap-action design is protected from the environment by a silicon rubber boot, operating on a "rolling sleeve" principle that gives long sealed life and smooth operation.

The P7 Series is designed to meet the requirements of MIL-S-8805 including low level switching (10 mA @ 30 mV) with power switching up to 5 amps at 28 VDC as well.

A variety of mounting styles are offered to best match the application. The P7-1, P7-2, P7-7, and P7-8 Case Styles feature a swaged bushing shape to allow press-fit installation in aircraft flight control and hand grips and similar applications. The other series feature threaded bushing mounting. The P7-3 Case Style has a front panel bezel while the P7-5 and P7-6 have conventional bushings for rear panel mounted installations. There is a choice of silver or black bezel color. Other colors available on special order.

Pushbuttons are available in a choice of nine colors. Excellent tactile feedback assures the operator that contact transfer had been made.

A choice of Mil-Spec. and commercial versions of these switches are offered moisture-proof/dust-tight or water-proof sealed. Consult the ordering code to specify.



SPECIFICATIONS

ELECTRICAL CIRCUIT: The double-break configuration offers wider switching possibilities in addition to providing longer life and greater capacity. Therefore, there is a choice: normally open or closed, 3-terminal types, two-circuit, and a five terminal arrangement to control four circuits.

ELECTRICAL RATING:

@28 VDC or 115 VAC, 60/400 Hz.

LOAD

Resistive
Inductive
Lamp

SINGLE CIRCUIT

5 Amps
3 Amps
2 Amps

2-CIRCUIT

4 Amps
2 Amps

Low Level Option: 30 MV @ 10 ma. for 25,000 cycles.

MATERIALS:

Case: Aluminum alloy, anodized clear or black.
Button: Nylon, red, black or white and other optional colors.

Seal: Internal silicone rubber.

Hardware: Brass, black oxidized, where required.

Terminals: The terminals are suitable for soldering.

OPERATIONAL:

Operating Force: 1.7 lbs. ±.5 lbs.

Also available 12oz. ±4oz. on special order

Mechanical Life: 1,000,000 cycles.

Electrical Life: 25,000 cycles.

Dielectric Withstanding: 1050 Volts, rms.

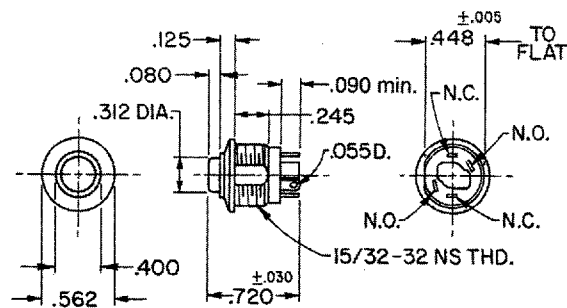
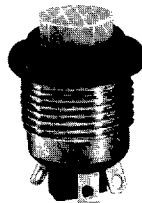
Temperature Range: -55° to +85°C.

Special Large Button, Bezel Mount

Available with .312" dia. Button, in a choice of colors.

Color OTTO Cat. No.

Red	P7-300008
Green	P7-300011
Yellow	P7-300012
White	P7-300013
Black	P7-300014



Other colors available. EMI shielding also available.

Special Longer Length Button.

Panel seal gasket and water tight enclosure. Button is black nylon. Bezel is black anodized aluminum alloy.

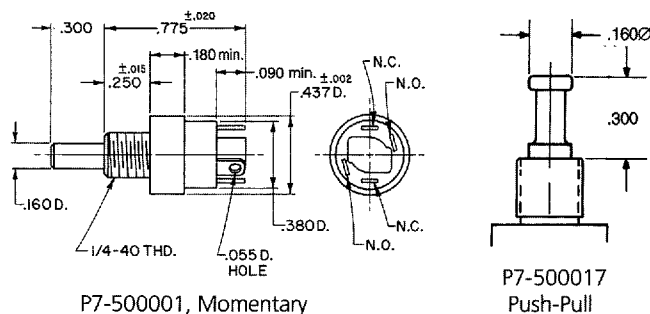
Available in two models:

Actuation Action

Momentary
Push-Pull Maintained

OTTO Cat. No.

P7-500001
P7-500017



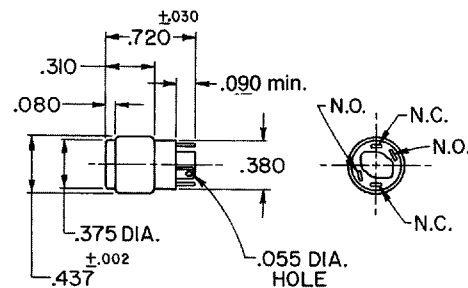
P7-500001, Momentary

Special Large Button, Press Fit.

Available with a .375" dia. button in colors

Color OTTO Cat. No.

Red	P7-900001
Black	P7-900002
White	P7-900009

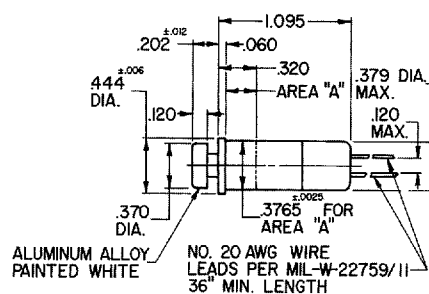


Other Button colors available.

Special White Painted Aluminum Button, Press Fit.

Case is sealed per MIL-S-8805, Class 3 and is black anodized aluminum.

P7-900007



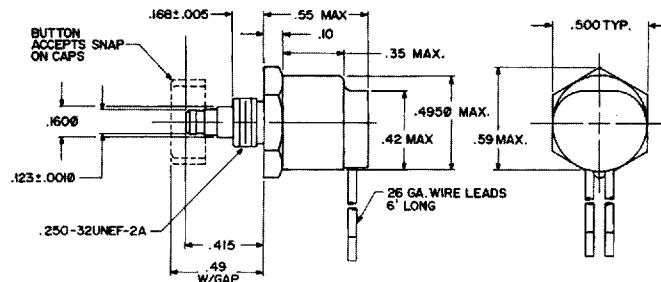
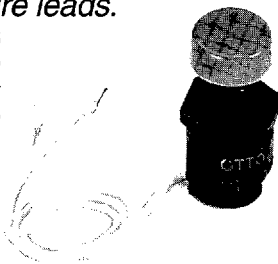
Special Snap-On Button, Wire leads.

Features changeable snap-on button caps available in two diameters and in a range of colors. Switch is splash-proof sealed per MIL-S-8805 and is supplied with a silicone panel gasket.

Switch Cat. No.: P7-500018

Button	.440" Dia.	.375" Dia.
Red	C400725-1	C400723-1
Black	C400725-2	C400723-2
Orange	C400725-3	C400723-3
White	C400725-9	C400723-9

Other colors available.



Mouser Electronics

Authorized Distributor

Click to View Pricing, Inventory, Delivery & Lifecycle Information:

OTTO:

[P7-300008](#) [P7-300011](#) [P7-300013](#) [P7-500001](#) [P7-500018](#)