

SEALED PUSHBUTTON SWITCHES

P7-D
DOME
PUSHBUTTONS

MOMENTARY ACTION, ATTRACTIVE & RUGGED FOR WET & DUSTY ENVIRONMENTS

The P7-D pushbutton switch is a momentary switch with a contoured dome style pushbutton. Two design versions are offered; flush dome and raised dome button profile. The P7-D features a shorter behind panel depth, dusttight and moisture-proof sealed construction excellent mechanical and electrical performance while operating under the most severe conditions. 1 million operations at 1 amp resistive, 50,000 at full rated load of 5 amps resistive or 3 amps inductive.

The P7-D is a double break switch with momentary circuit, the positive tactile feedback signals the operator when the switch is operated. Multiple contact variations are available as well as a variety of special order button legends. High contact pressure and unique contact design provide low contact resistance for low level switching capability as well as full rated service.

This quality precision snap-action switch is designed for use in instrument panels, grips, computers, heavy equipment and other applications where attractive rugged pushbutton switches are required.

Features:

- Attractive dome style buttons
- Low level switching capability
- Less than 25mΩ contact resistance
- High contact pressure
- Six circuit variations
- Positive tactile feedback
- Variety of mounting styles
- Constructed in accordance with MIL-PRF-8805/110 (no QPL)
- UL recognized
- Dusttight to IP64 & MIL-PRF-8805 Design 2 or watertight to IP68S

Raised Dome Button



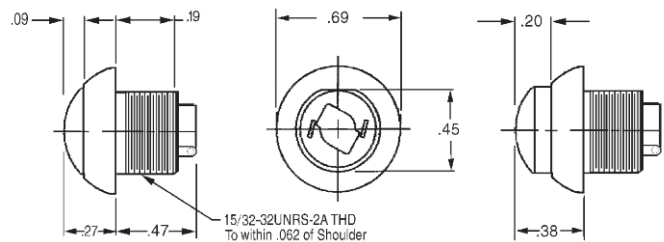
Flush Dome Button



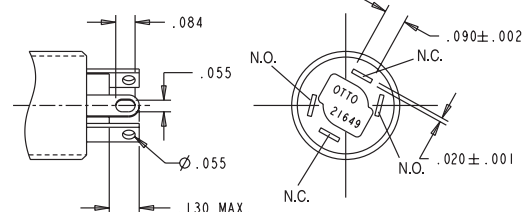
Standard Characteristics/Ratings:

ELECTRICAL RATINGS: Sea Level @ 28VDC or 115VAC, 60/400Hz		
Load	N.O./N.C.	Life Cycles
Resistive	1A	1,000,000
Resistive	5A	50,000
Inductive	3A	50,000
DWV	1050Vrms	
Low Level	10mA @ 30mV max	25,000
Electrical Life: See Rating Chart		
Mechanical Life: 1,000,000 cycles		
Seal: IP64 & MIL-PRF-8805 Design 2 or IP68S		
Operating Temp Range: -55°C to +85°C		
Operating Force: 1.7 +/- 0.5 lb. (standard force)		
Total Travel: 0.080 inches max		
MATERIALS:		
Case: Anodized aluminum alloy		
Button: Thermoplastic		
Contacts: Brass with gold plate over silver plate		
Terminal Hardware: None provided		
Mounting Hardware: Hex nut, lockwasher and panel seal on watertight versions		

Terminal Style Short



Terminal Style "A" & "B"



Standard

NOTE: For PC mounting pattern, see P7 series.

P7-D PART NUMBER CODE

P7-D	X	X	X	X	X	X
Button Style	Terminal Style/Construction Grade	Circuit Form	Contact Rating	Bezel Color	Button Color	
F. Flush	A. Std. Commercial Solder	1. N.O.	1. Std.	1. Clear	1. Red	
R. Raised	B. Std. Watertight Commercial Solder	2. N.C.	2. Low Level	2. Black	2. Black	
	1. Solder/Military/Short	3. N.C. 3 Terminal			3. Orange	
	2. Solder/Commercial/Short	4. N.O. 3 Terminal			4. Yellow	
	3. Solder/Mil. Watertight/Short	5. 5 Terminal			5. Green	
	4. PC Pin/Commercial	6. 2 Circuit			6. Blue	
	5. PC Pin/Military				7. Purple	
	6. PC Pin/Mil. Watertight				8. Gray	
	7. Solder/Com. Watertight/Short				9. White	
	8. PC Pin/Com. Watertight					

Mouser Electronics

Authorized Distributor

Click to View Pricing, Inventory, Delivery & Lifecycle Information:

OTTO:

[P7-DF66128](#) [P7-DF31125](#) [P7-DR21128](#) [P7-DR31225](#) [P7-DF11129](#) [P7-DR31229](#) [P7-DF36221](#) [P7-DR31226](#) [P7-DF31225](#) [P7-DF31229](#) [P7-DFA1128](#) [P7-DR76128](#) [P7-DF66129](#) [P7-DR36121](#) [P7-DF31228](#) [P7-DF36121](#) [P7-DR36226](#) [P7-DR31223](#) [P7-DF31224](#) [P7-DR81222](#) [P7-DRB1127](#) [P7-DRB6124](#) [P7-DR66128](#)