

# CHARACTERISTICS

## ELECTRICAL:

(C)

LOW LEVEL ELECTRICAL RATINGS:  
RESISTIVE 10mA@30mV  
INDUCTIVE 10mA@30mV  
ELECTRICAL LIFE: 25,000 CYCLES.

## MECHANICAL:

TOTAL TRAVEL: .085±.015  
OPERATING FORCE: 2.5  $\pm$  .5 LBS.  
RESET FORCE: .75 LB. MIN.  
MECHANICAL LIFE: 1,000,000 CYCLES

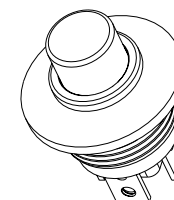
## PHYSICAL:

TEMPERATURE RANGE: -55°C TO +85°C  
ENCLOSURE DESIGN: WATERPROOF TO 1.4 PSI  
BUTTON: BLACK NYLON  
CASE: CLEAR ANODIZED  
ALUMINUM ALLOY

MARKING: P8-3000006  
& DATE CODE

## NOTES:

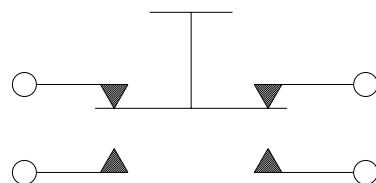
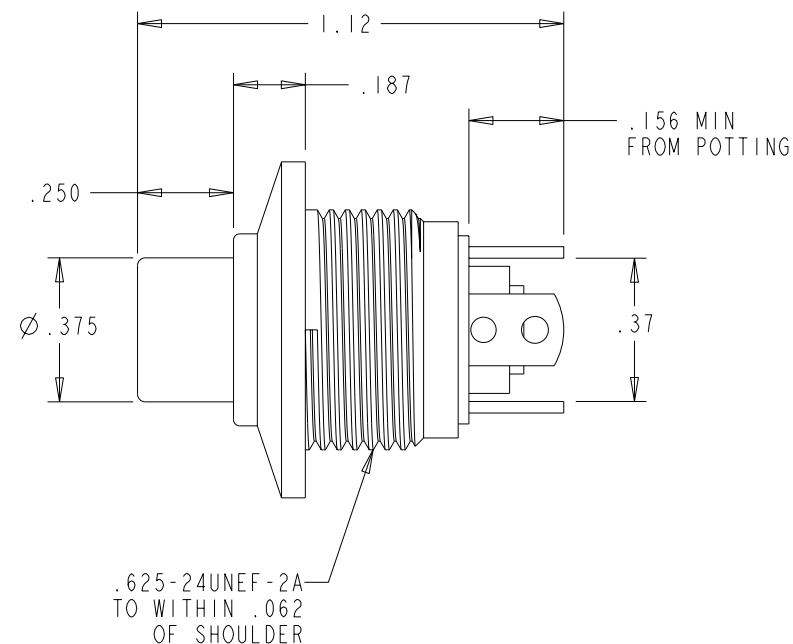
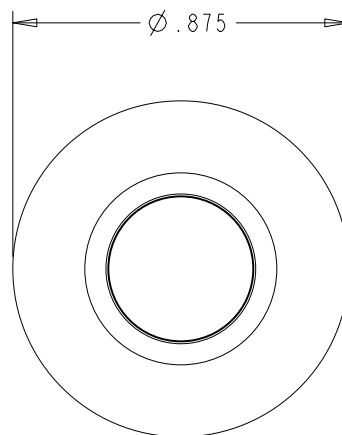
MOUNTING HARDWARE:  
HEX NUT, LOCKWASHER,  
O-RING



SCALE 1:1

P8-3000006

REV	OCN #	DATE	APR
A	960822	28 FEB 96	RE
B	012069	04 MAR 02	REO
C	013574	26 JUN 02	REO



SPDT-DB  
SCHEMATIC



MANUFACTURING



SPC

UNLESS OTHERWISE SPECIFIED:  
DIMENSIONS ARE IN INCHES.  
TOLERANCES ARE AS LISTED.  
MUST BE FREE FROM BURRS  
AND SHARP EDGES.

TOLERANCES  
.XX ±.03  
.XXX ±.010  
ANGLES ±2°  
DO NOT SCALE DRAWING.  
THIRD ANGLE  
PROJECTION



OTTO CONTROLS  
DIVISION OF  
OTTO ENGINEERING INC.  
CARPENTERSVILLE, ILLINOIS USA

THIS DOCUMENT IS THE CONFIDENTIAL  
PROPERTY OF OTTO ENGINEERING, INC..  
IT IS PROVIDED ON A RESTRICTED  
BASIS AND IS NOT TO BE USED IN ANY  
WAY DETRIMENTAL TO THE INTERESTS  
OF OTTO ENGINEERING, INC..

## DESCRIPTION

SPDT-DB  
PUSHBUTTON SWITCH

DRWN. KA	SIZE	FSCM NO	DRAWING NO.	REV.
CHKD. HR	A	21649	P8-3000006	C
APPD. MGC				
DATE 20 DEC 93	WT.	Scale 2:1	Sheet 1 OF 1	

# Mouser Electronics

Authorized Distributor

Click to View Pricing, Inventory, Delivery & Lifecycle Information:

OTTO:

P8-3000006