

# SEALED SUBMINIATURE BASIC SWITCHES

**B3S**  
SEALED BASIC  
SWITCHES

SEALED, DOUBLE BREAK, SNAP-ACTION, SUBMINIATURE

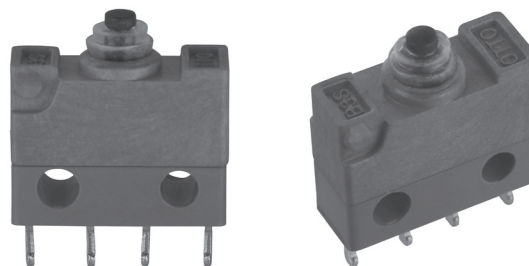
OTTO's sealed, double break B3S basic switch is designed for demanding applications that require a reliable seal. Sealed to IP68S, the B3S basic switch has a high cycle life - tested to 1 million cycles at logic level. The switch is also capable of handling up to an 8 amp resistive load.

Great double break circuit versatility is available with your choice of normally open (Form X), normally closed (Form Y), 3 terminal SPDT (Form C) or 4 terminal SPDT (Form Z).

The B3S is designed for use in places where space is limited, with or without lever actuators. In addition, the switch can be used as part of pushbutton, trigger and toggle switches that require sealing for demanding applications. Multiple terminal styles and wire lead options are available.

## Features:

- **Sealed to IP68S**
- **Double break circuit**
- **Logic level switching option tested to 1 million electrical cycles**
- **0.200" switch width**
- **Choice of 10 standard terminal styles or wire leads**
- **Lever actuators are also available**
- **Momentary action**
- **RoHS compliant**



### B3S Standard Characteristics/Ratings:

**ELECTRICAL RATINGS:** Sea Level @ 28VDC

Rating	Load	Current	Life Cycles
High Level N.C. or N.O. Form C	Resistive	8A	50,000
High Level N.C. or N.O. Form Z	Resistive	8A	50,000
High Level SPDT Form C	Resistive	5A	50,000
High Level SPDT Form Z	Resistive	5A	50,000
Logic Level @ 5VDC	Resistive	10mA	1,000,000

DWV 1000Vrms

**Mechanical Life:** 1,000,000 cycles

**Seal:** IP68S

**Operating Temp Range:** -40°C to +85°C

**Operating Force:** 6 ± 2 oz.

**Overtravel:** .004 min.

**Release Force:** 1 oz. min.

**Movement Differential:** .018 +/- .008

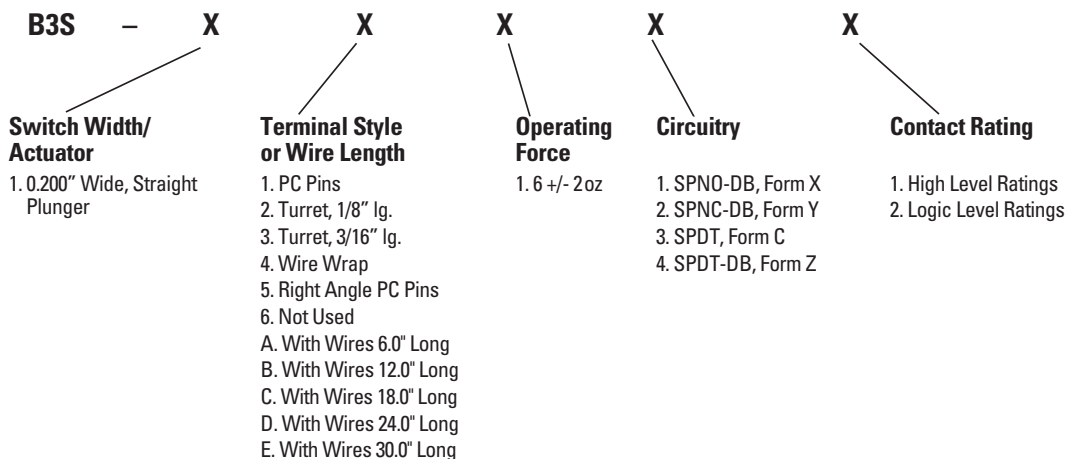
### MATERIALS:

**Cover:** Blue Thermoplastic

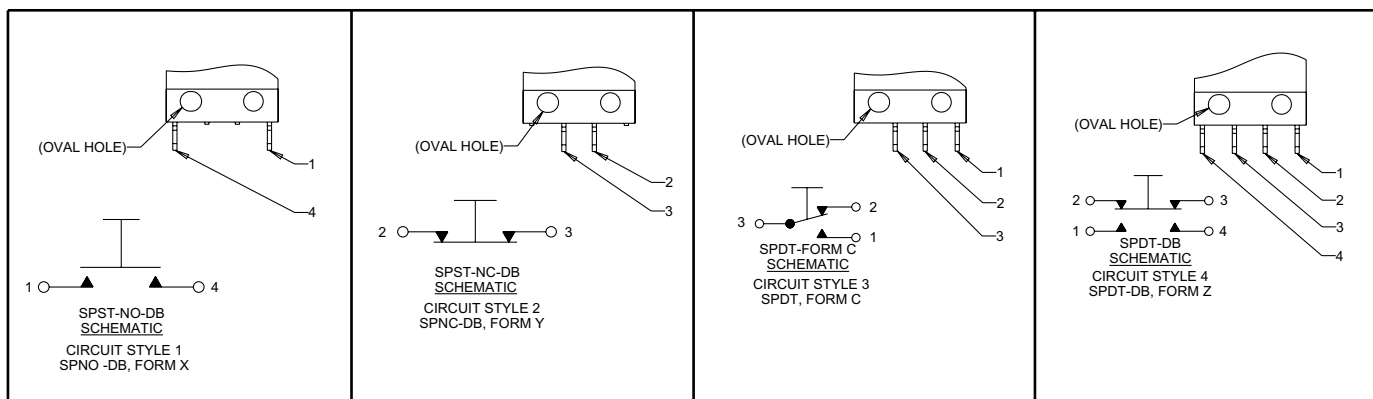
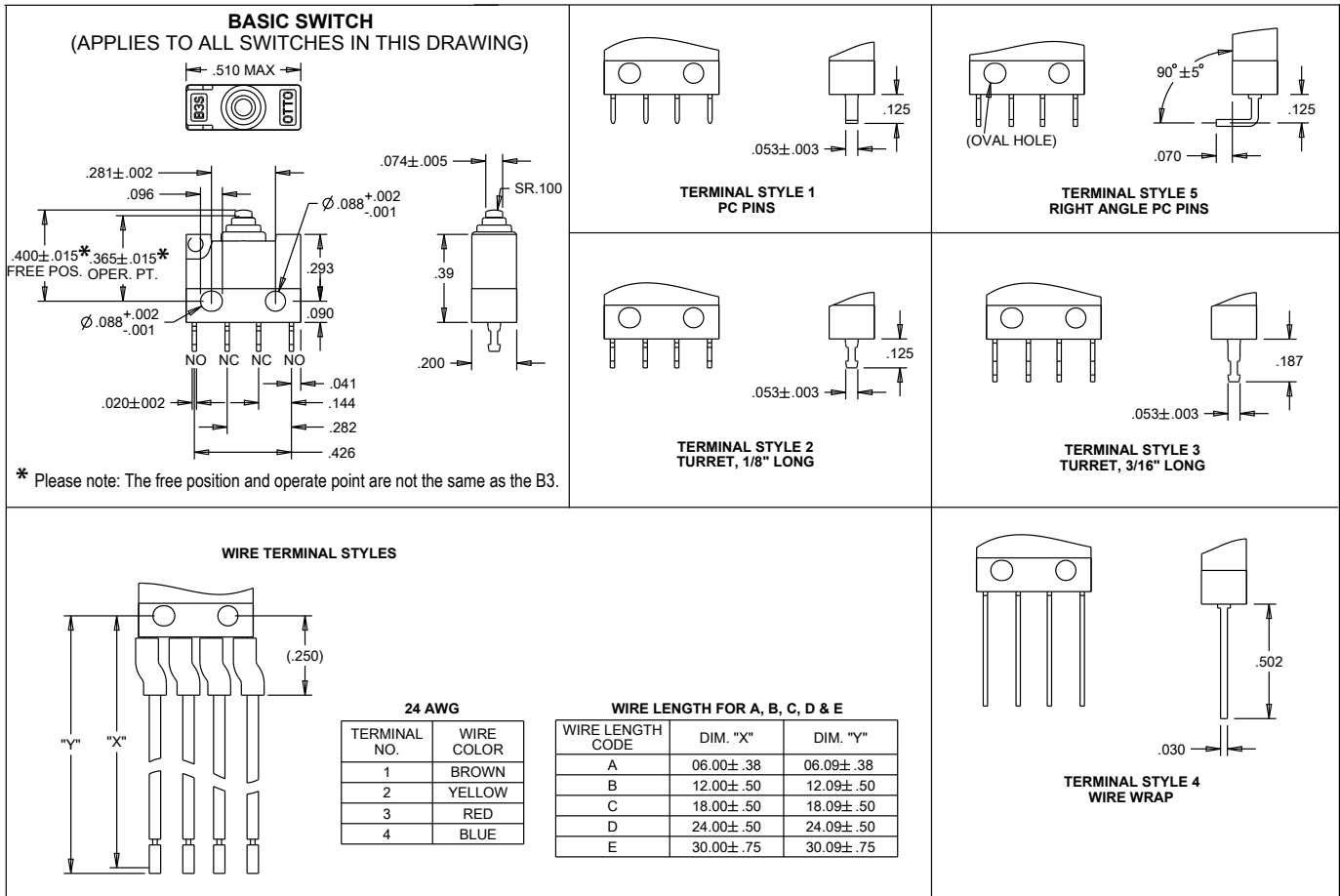
**Case:** Blue Thermoset

**Boot:** Silicone Rubber

## B3S PART NUMBER CODE



## SEALED, DOUBLE BREAK, SNAP-ACTION, SUBMINIATURE



# Mouser Electronics

Authorized Distributor

Click to View Pricing, Inventory, Delivery & Lifecycle Information:

OTTO:

[B3S-12141](#) [B3S-52141](#) [B3S-52241](#) [B3S-52341](#)